

BOULEVARD SQUARE

3431 S BOULEVARD EDMOND, OK 73013



PROPERTY DESCRIPTION

Boulevard Square is a neighborhood shopping center located at the heavily trafficked intersection of 33rd & Boulevard in Edmond, OK in the heart of Edmond Oklahoma -Oklahoma City's preferred sub market. Boulevard Square is conveniently located to the north of a 250,000 square foot office park, medical and Oklahoma Christian University providing an excellent daytime population.

PROPERTY HIGHLIGHTS

- Prominent Location
- Easy access to Kilpatrick Turnpike, a main artery of North OKC
- Nearby neighbors include: Hobby Lobby, TJ Maxx,
- HomeGoods, Natural Grocers, and others

OFFERING SUMMARY

Lease Rate:	\$16.00 SF/yr (NNN)
Available SF:	1,450 - 1,842 SF
Lot Size:	1.64 Acres
Building Size:	15,920 SF

SPACES	LEASE RATE	SPACE SIZE
106	\$16.00 SF/yr	1,842 SF
107	\$16.00 SF/yr	1,450 SF

DEMOGRAPHICS

	1 MILE	3 MILES	5 MILES
Total Households	3,685	22,104	47,949
Total Population	10,434	57,478	123,619
Average HH Income	\$61,347	\$73,010	\$80,286

GEORGE WILLIAMS, CCIM

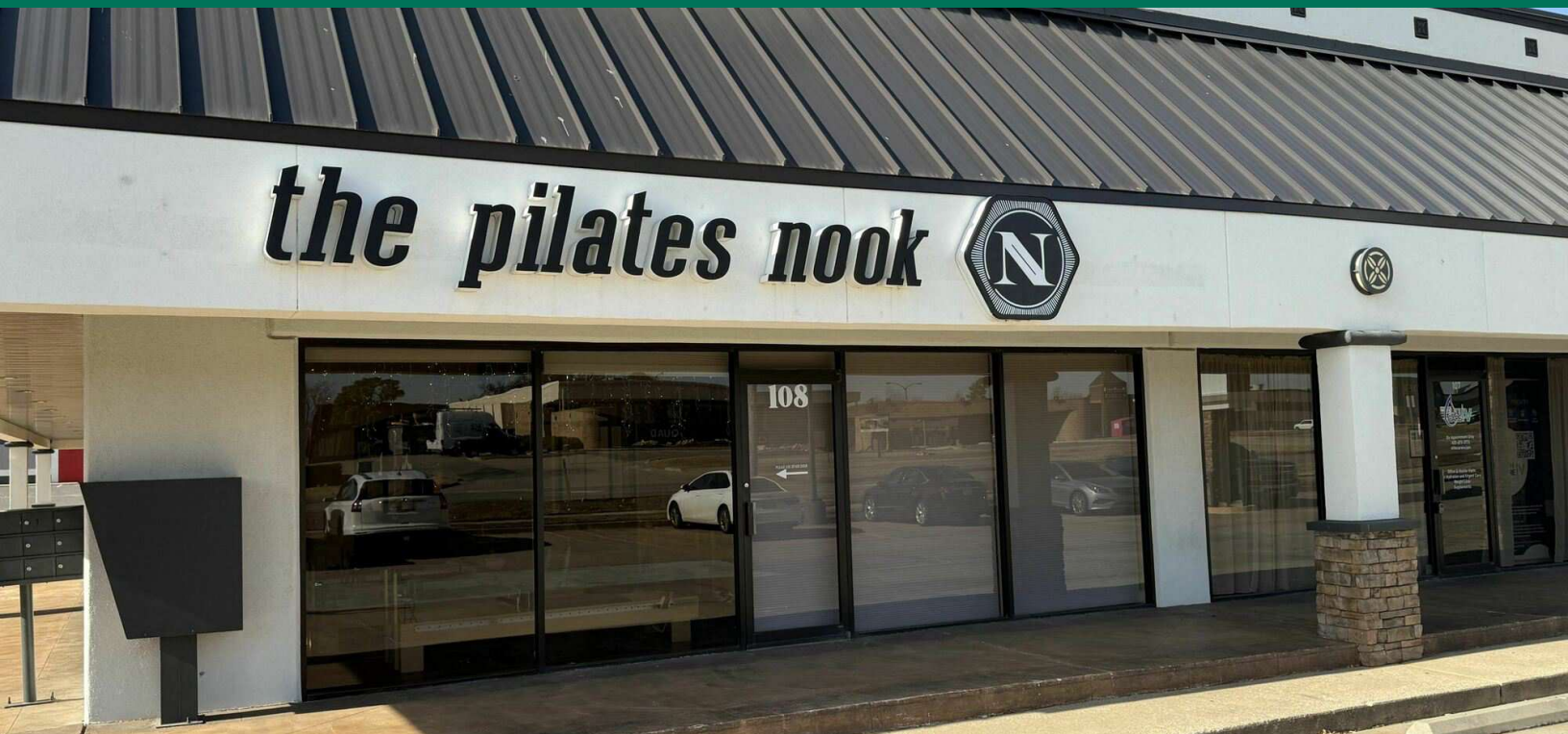
gwilliams@priceedwards.com

O: 405.239.1270 C: 405.657.7800

**PRICE
EDWARDS**
AND COMPANY

BOULEVARD SQUARE

3431 S BOULEVARD EDMOND, OK 73013



GEORGE WILLIAMS, CCIM

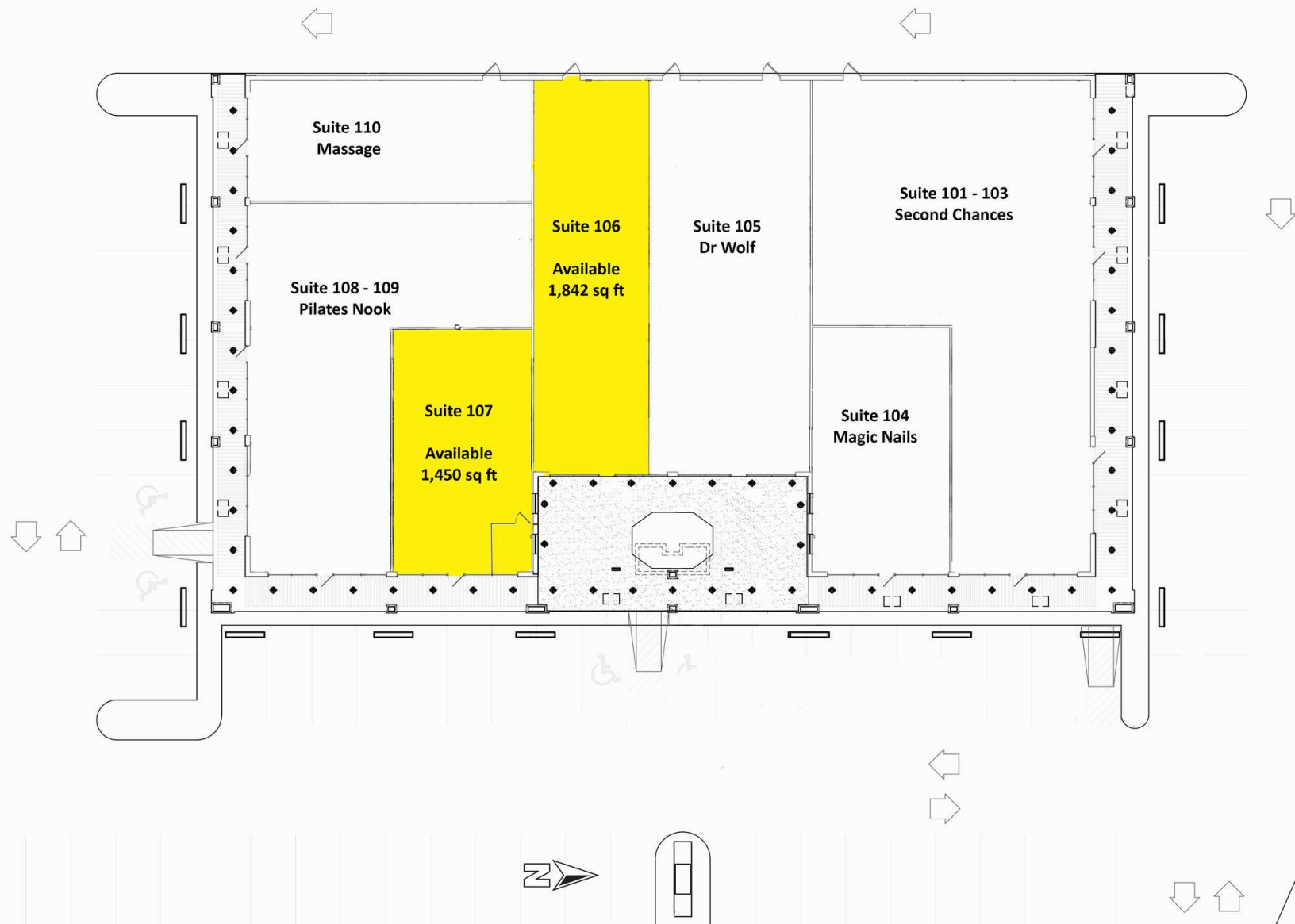
gwilliams@priceedwards.com

O: 405.239.1270 C: 405.657.7800

**PRICE
EDWARDS**
AND COMPANY

BOULEVARD SQUARE

3431 S BOULEVARD EDMOND, OK 73013



GEORGE WILLIAMS, CCIM

gwilliams@pricedwards.com

O: 405.239.1270 C: 405.657.7800

**PRICE
EDWARDS**
AND COMPANY

3431 S BOULEVARD EDMOND, OK 73013



PRICE
EDWARDS
AND COMPANY