

# Broadway Park

1122 N Broadway Ave Oklahoma City, OK 73103



1122 N Broadway Ave

Oklahoma City, Oklahoma

**IAN SELF**  
Sales Associate  
405.239.1271  
iself@priceedwards.com  
priceedwards.com

**ALLISON BARTA BAILEY**  
Price Edwards - Urban  
405.239.1245  
abailey@priceedwards.com  
priceedwards.com

# Broadway Park

1122 N Broadway Ave, Oklahoma City, OK 73103



## OFFERING SUMMARY

Lease Rate: \$18.00 - 22.00 SF/yr (NNN)

Building Size: 47,000 SF

Available SF: 2,731 - 7,728 SF

Year Built: 2020

Submarket: Automobile Alley

## VIRTUAL TOUR

### PROPERTY OVERVIEW

Broadway Park is a well-located building at the crossroads of the 10th Street corridor and Automobile Alley. Neighbors include Oklahoma Contemporary, Hatch, B10 Steakhouse, Sidecar, Tesla and the Buick, Pontiac and Benz office buildings.

Tenants can design their own space with floor plans and finishes to meet their needs in this new construction property.

### PROPERTY HIGHLIGHTS

- New Construction; distinctive design
- Automobile Alley location, walkable to restaurants and retail
- Outdoor patio & gathering spaces on all floors
- Generous build-out allowance
- Signage opportunities with high profile visibility
- Covered parking available within the block

**IAN SELF**  
405.239.1271  
iself@priceedwards.com  
priceedwards.com

**ALLISON BARTA BAILEY**  
405.239.1245  
abailey@priceedwards.com  
priceedwards.com



## LEASE INFORMATION

Lease Type:	NNN	Lease Term:	5 to 10 Year Term
Total Space:	2,731 - 7,728 SF	Lease Rate:	\$18.00 - \$22.00 SF/yr

## AVAILABLE SPACES

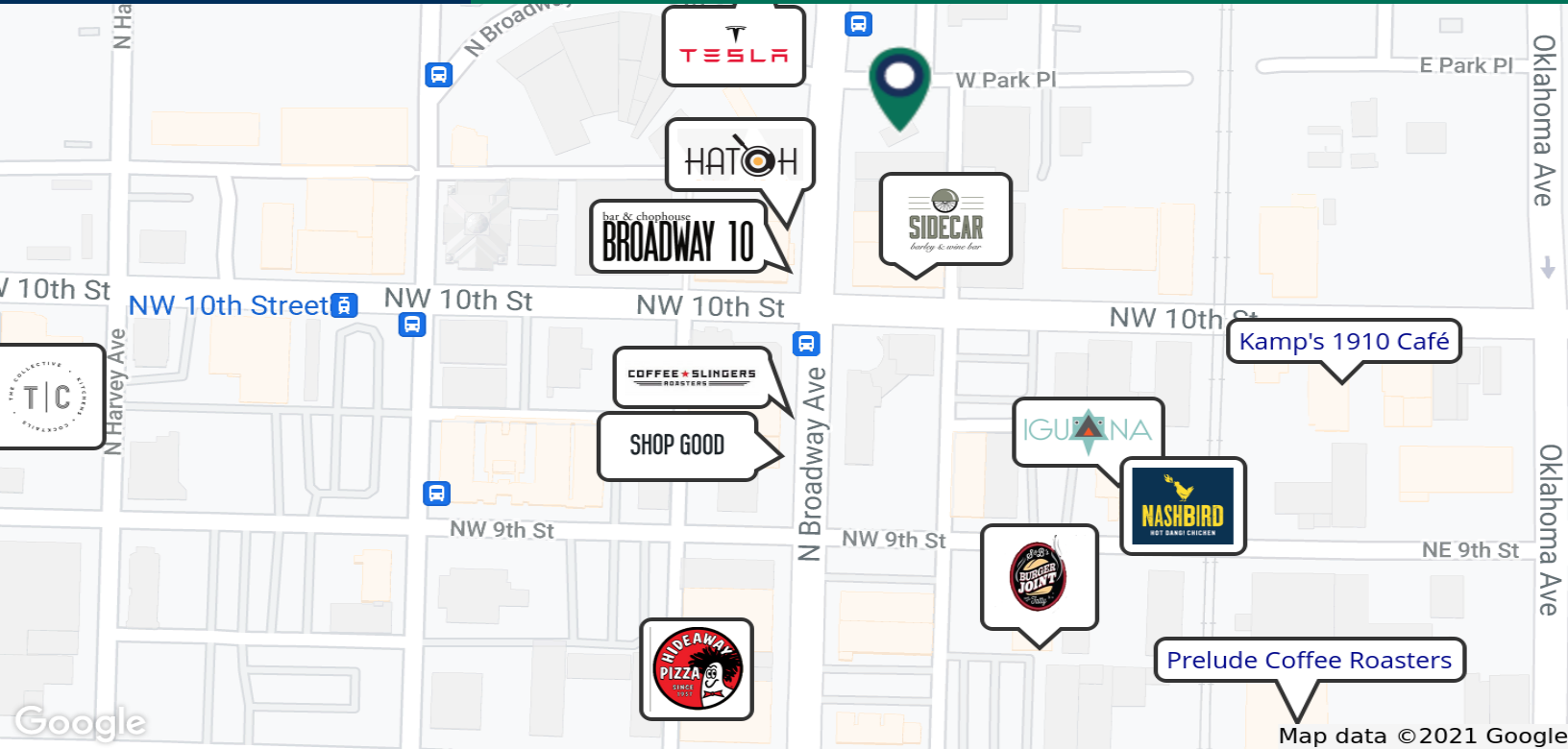
SUITE	TENANT	SIZE (SF)	LEASE TYPE	LEASE RATE	DESCRIPTION
1122 N Broadway Ave, 1st floor	Available	2,731 SF	NNN	\$22.00 SF/yr	retail
1122 N Broadway Ave, 2nd floor	Available	3,864 - 7,728 SF	NNN	\$18.00 SF/yr	office
1122 N Broadway Ave, 3rd floor	Available	3,781 - 7,562 SF	NNN	\$18.00 SF/yr	office
1122 N Broadway Ave, 4th floor	Available	3,781 - 7,562 SF	NNN	\$18.00 SF/yr	office
1122 N Broadway Ave, 5th floor	Available	3,264 - 6,528 SF	NNN	\$18.00 SF/yr	office

**IAN SELF**  
405.239.1271  
iself@priceedwards.com  
priceedwards.com

**ALLISON BARTA BAILEY**  
405.239.1245  
abailey@priceedwards.com  
priceedwards.com

# Broadway Park

1122 N Broadway Ave, Oklahoma City, OK 73103



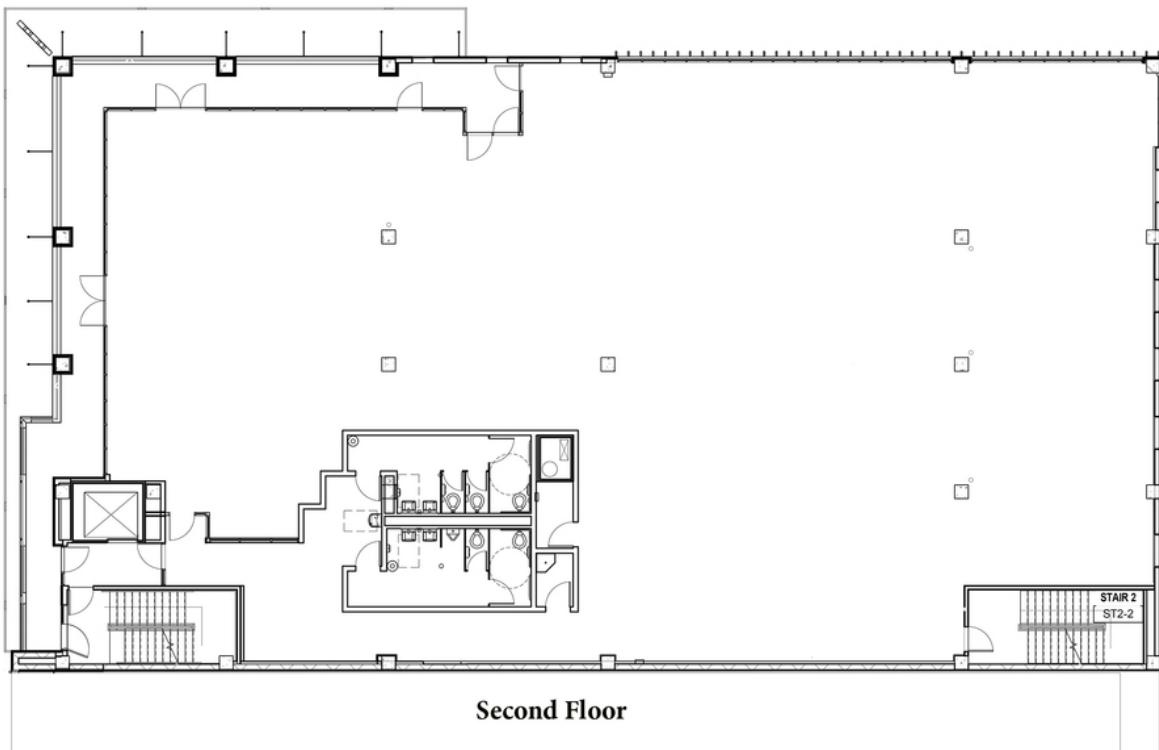
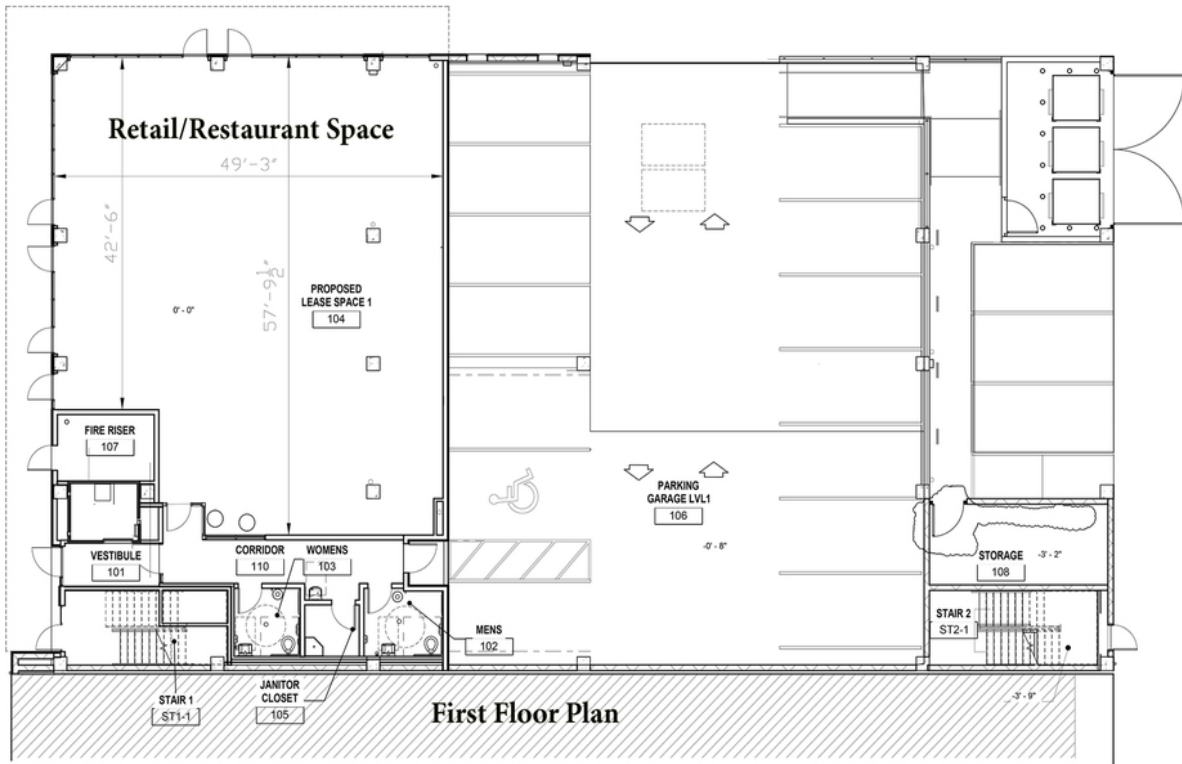
Map data © 2021 Google



Map data ©2021

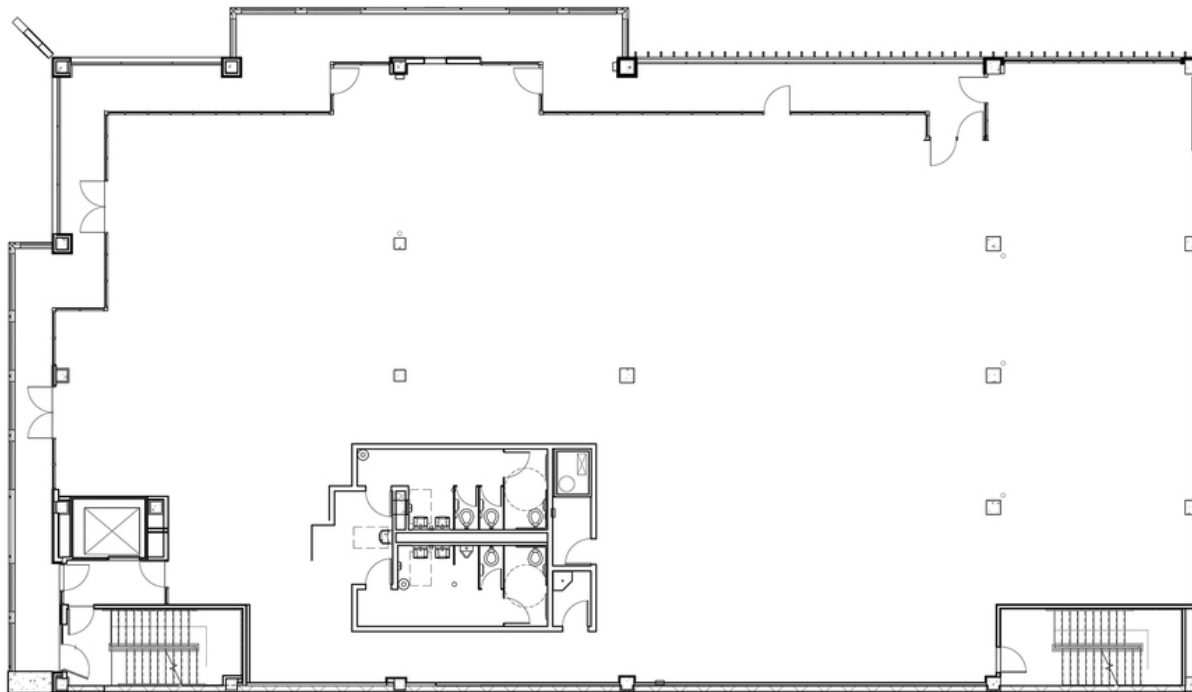
IAN SELF  
405.239.1271  
iself@pricedwards.com  
pricedwards.com

ALLISON BARTA BAILEY  
405.239.1245  
abailey@pricedwards.com  
pricedwards.com

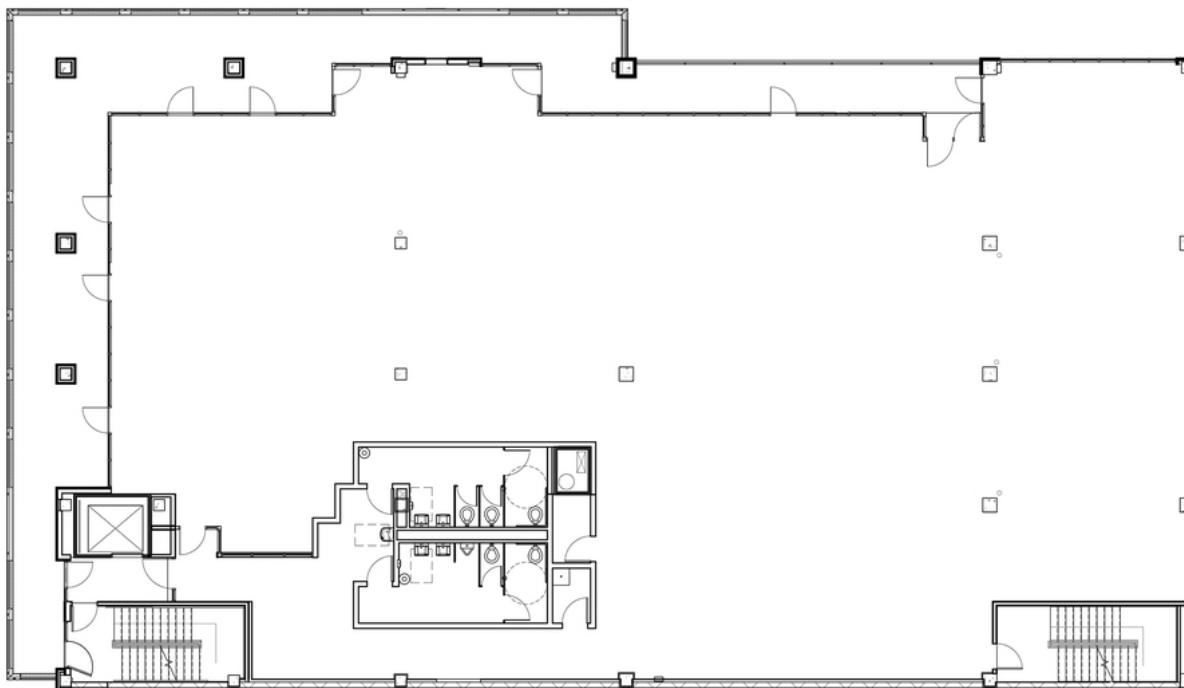


**IAN SELF**  
405.239.1271  
iself@pricedwards.com  
pricedwards.com

**ALLISON BARTA BAILEY**  
405.239.1245  
abailey@pricedwards.com  
pricedwards.com



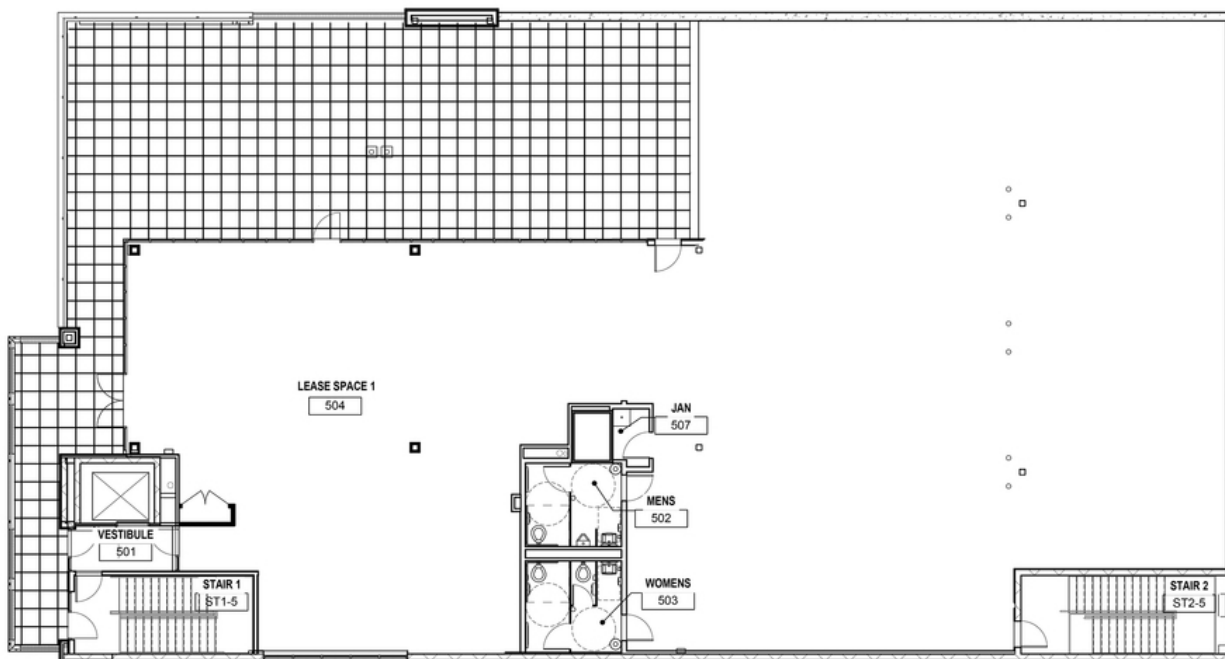
**Third Floor**



**Fourth Floor**

**IAN SELF**  
405.239.1271  
iself@priceedwards.com  
priceedwards.com

**ALLISON BARTA BAILEY**  
405.239.1245  
abailey@priceedwards.com  
priceedwards.com



**Fifth Floor**



**IAN SELF**  
405.239.1271  
iself@pricedwards.com  
pricedwards.com

**ALLISON BARTA BAILEY**  
405.239.1245  
abailey@pricedwards.com  
pricedwards.com

# Broadway Park

1122 N Broadway Ave, Oklahoma City, OK 73103



**IAN SELF**  
405.239.1271  
iself@priceedwards.com  
priceedwards.com

**ALLISON BARTA BAILEY**  
405.239.1245  
abailey@priceedwards.com  
priceedwards.com