

Broadway Park

1122 N Broadway Ave, Oklahoma City, OK 73103



1122 N Broadway Ave

Oklahoma City, Oklahoma

AARON DIEHL
Retail Specialist
405.651.3308
adiehl@priceedwards.com
priceedwards.com

Broadway Park

1122 N Broadway Ave, Oklahoma City, OK 73103



OFFERING SUMMARY

Lease Rate:	\$18.00 - 20.00 SF/yr (NNN)
Building Size:	39,277 SF
Available SF:	2,860 - 9,528 SF
Year Built:	2020
Submarket:	Automobile Alley

PROPERTY OVERVIEW

Broadway Park is a well-located building at the crossroads of the 10th Street corridor and Automobile Alley. Neighbors include Oklahoma Contemporary, Hatch, B10 Steakhouse, Sidecar, Tesla and the Buick, Pontiac and Benz office buildings.

Tenants can design their own space with floor plans and finishes to meet their needs in this new construction property.

Tenants can design their own space with floor plans and finishes to meet their needs in this new construction property.

PROPERTY HIGHLIGHTS

- New Construction; distinctive design
- Automobile Alley location, walkable to restaurants and retail
- Outdoor patio & gathering spaces on all floors
- Generous build-out allowance
- Signage opportunities with high profile visibility
- Covered parking available within the block

AARON DIEHL
405.651.3308
adiehl@priceedwards.com
priceedwards.com

Broadway Park

1122 N Broadway Ave, Oklahoma City, OK 73103



LEASE INFORMATION

Lease Type:	NNN	Lease Term:	5 to 10 Year Term
Total Space:	2,860 - 9,528 SF	Lease Rate:	\$18.00 - \$20.00 SF/yr

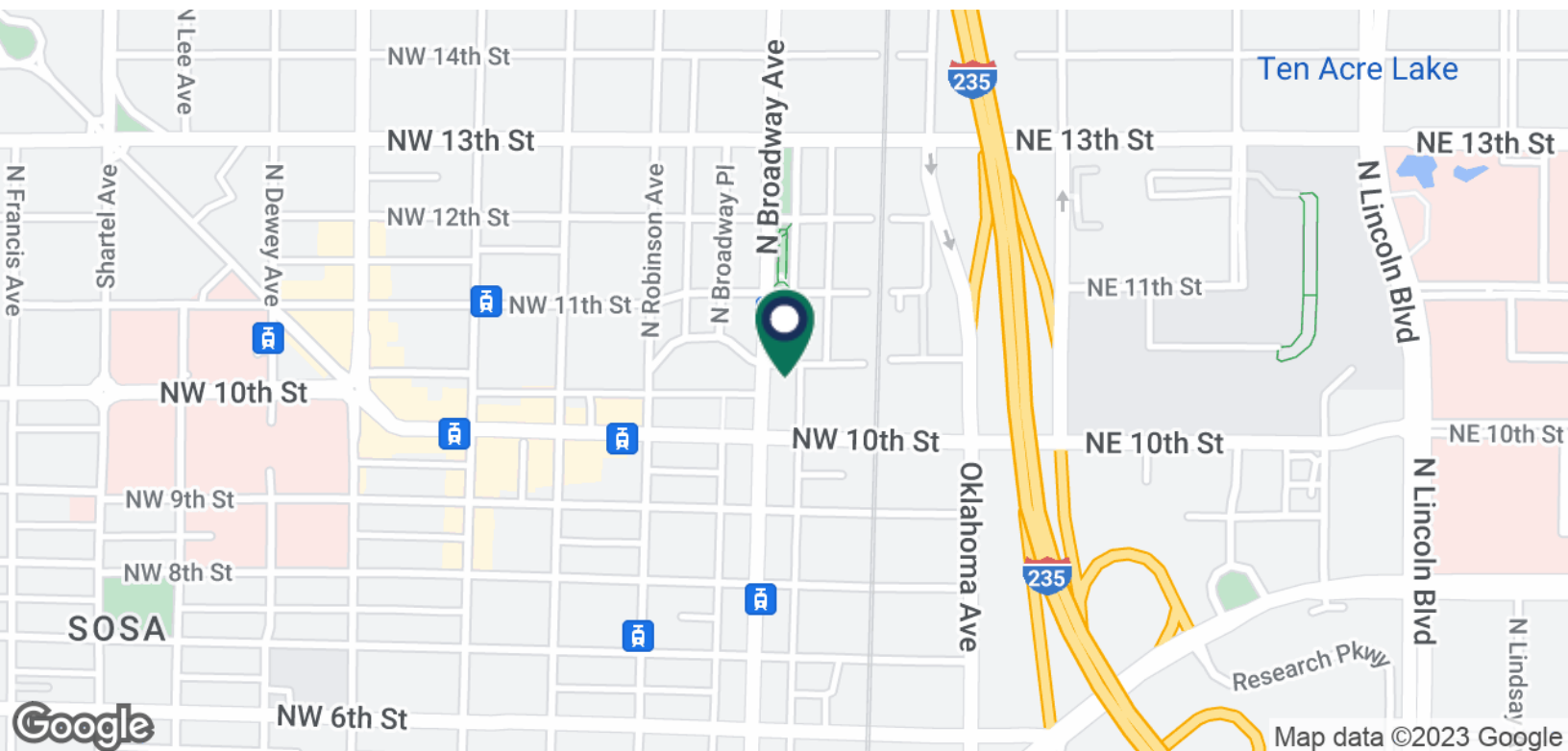
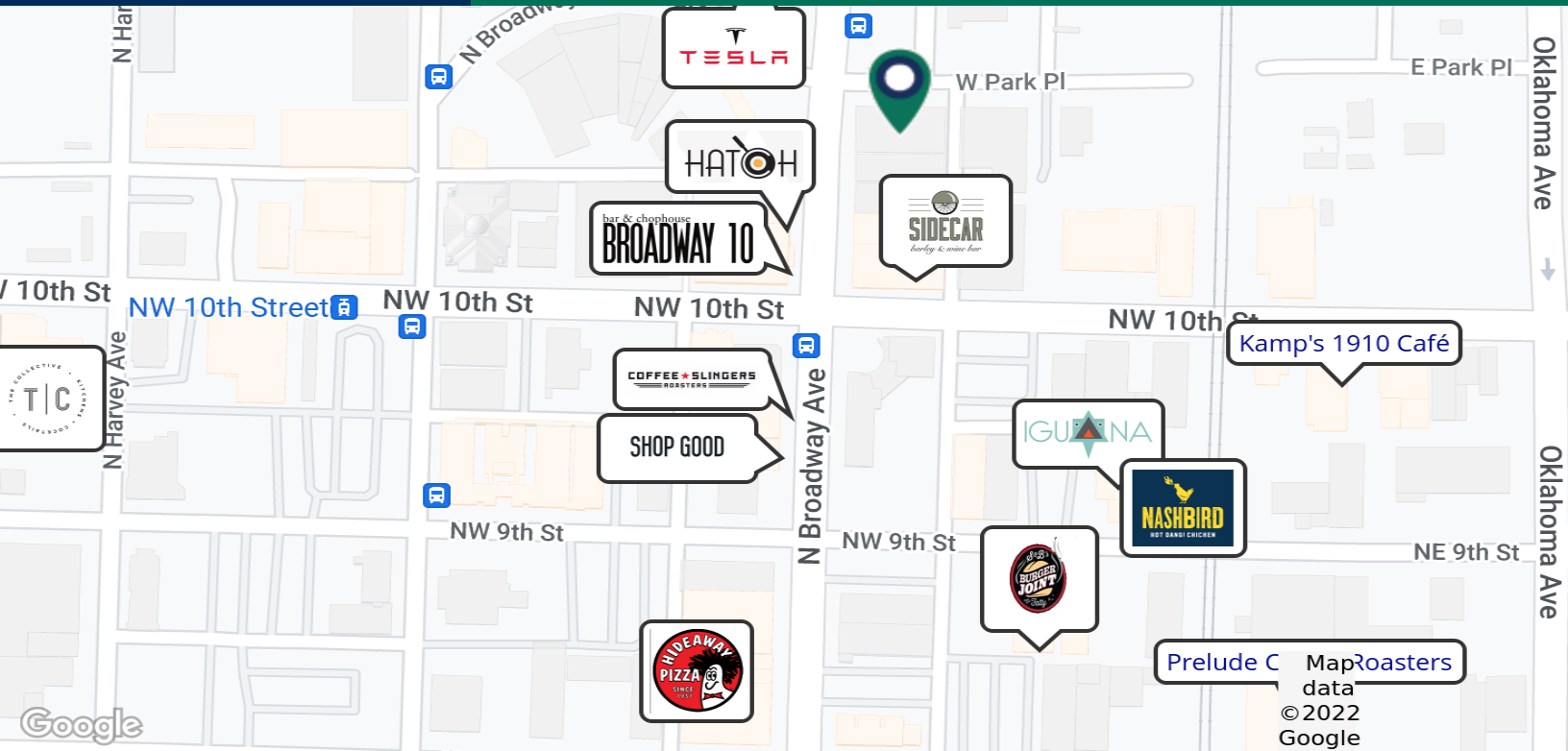
AVAILABLE SPACES

SUITE	TENANT	SIZE (SF)	LEASE TYPE	LEASE RATE	DESCRIPTION
1122 N Broadway Ave, 1st floor	On The Rocks	2,984 SF	On The Rocks	-	retail
1122 N Broadway Ave, 2nd floor	Available	2,860 - 9,528 SF	NNN	\$18.00 - 20.00 SF/yr	office
1122 N Broadway Ave, 3rd floor	Available	9,466 SF	NNN	\$18.00 - 20.00 SF/yr	office
1122 N Broadway Ave, 4th floor	Available	9,304 SF	NNN	\$18.00 - 20.00 SF/yr	office
1122 N Broadway Ave, 5th floor	Unavailable	7,853 SF	Leased	-	office

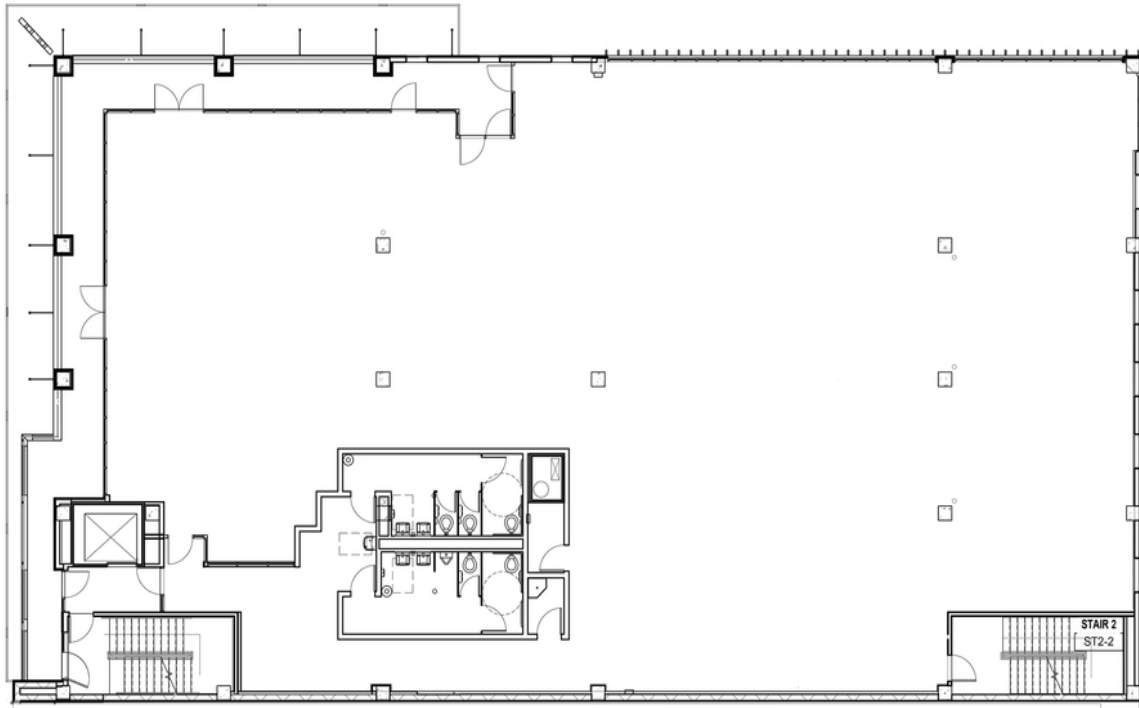
AARON DIEHL
405.651.3308
adiehl@priceedwards.com
priceedwards.com

Broadway Park

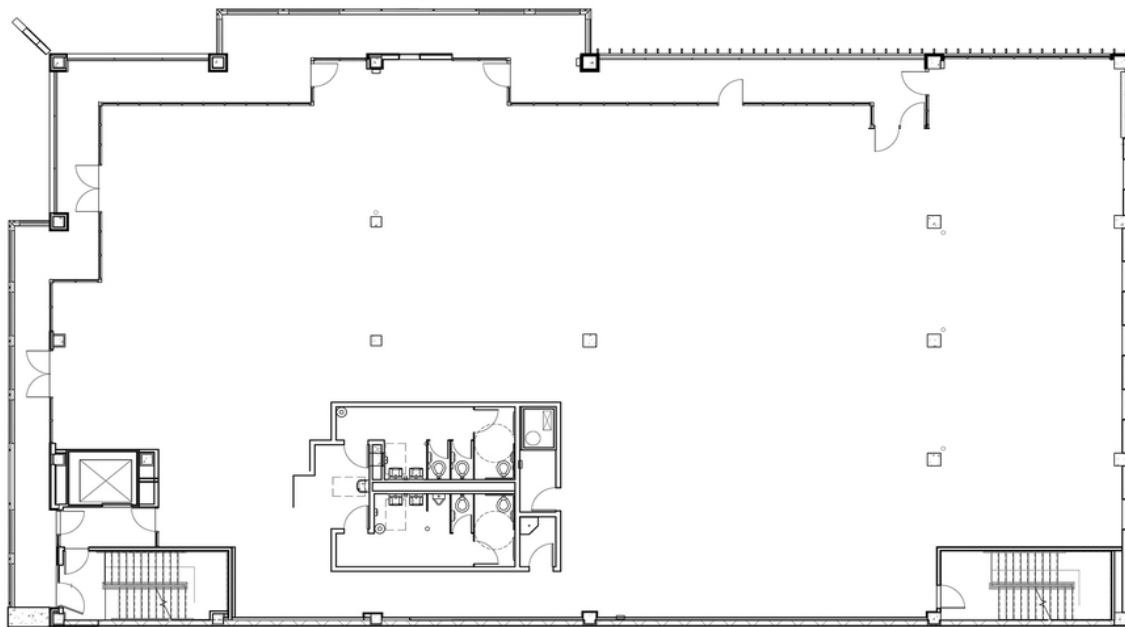
1122 N Broadway Ave, Oklahoma City, OK 73103



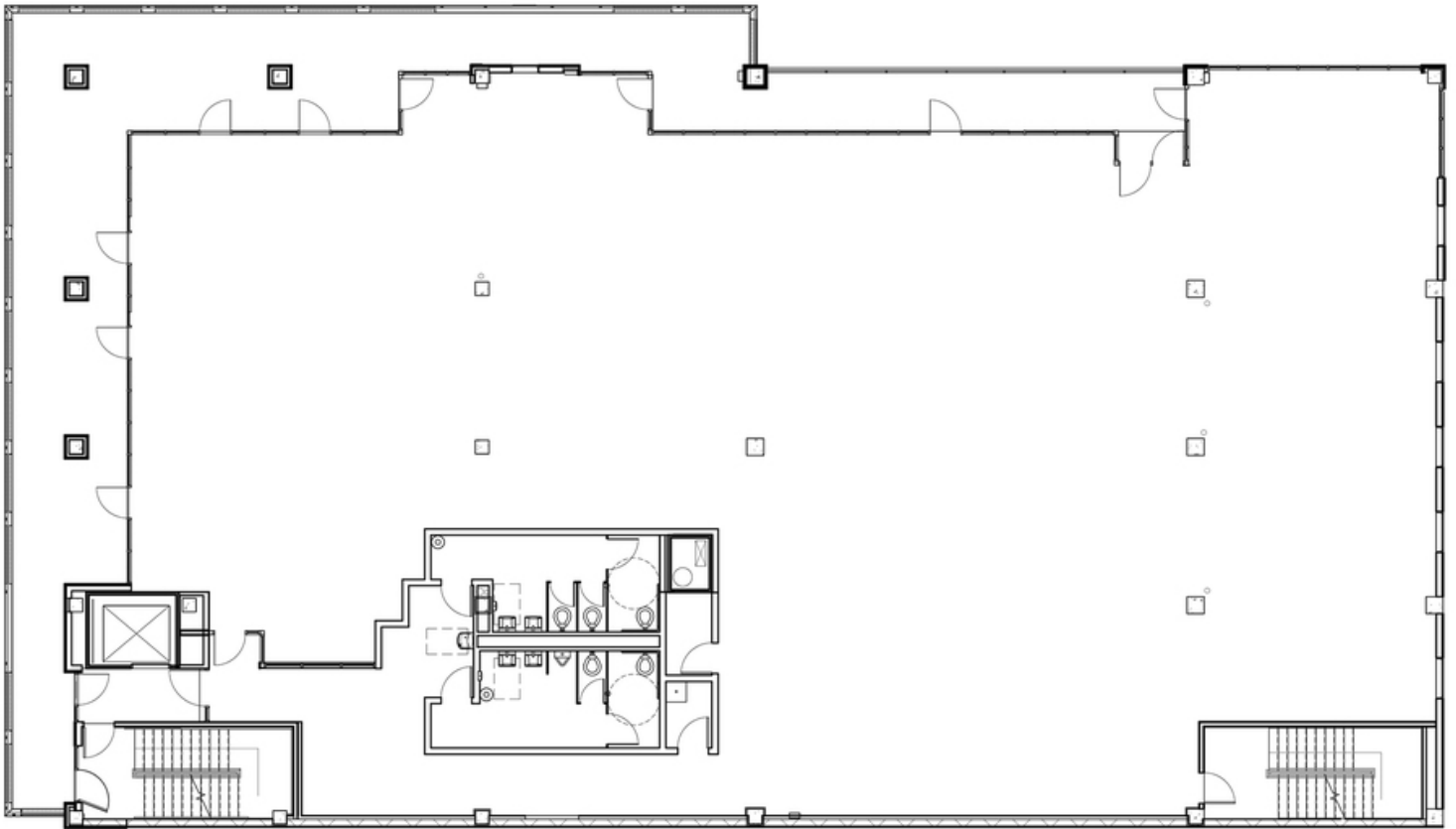
AARON DIEHL
405.651.3308
adiehl@priceedwards.com
priceedwards.com



Second Floor



Third Floor



Fourth Floor

Broadway Park

1122 N Broadway Ave, Oklahoma City, OK 73103



AARON DIEHL
405.651.3308
adiehl@priceedwards.com
priceedwards.com