

Caliber Park

14201 Caliber Drive, Oklahoma City, OK 73134



NORTH - SUITE 310 HIGHLIGHTS

- Nine private offices along the exterior window line
- Large conference room
- 3rd-floor balcony access
- Open space for Modular furniture
- Ample surface parking
- On-site building engineer
- Easy access to main thoroughfares
- Locally owned

LOCATION DESCRIPTION

Conveniently located in the prestigious Quail Springs Corporate Park, Caliber Park is within walking distance of numerous restaurants and retailers along May Avenue. The property is also in close proximity to the Hefner Parkway and the Kilpatrick Turnpike.

NORTH - SUITE 310

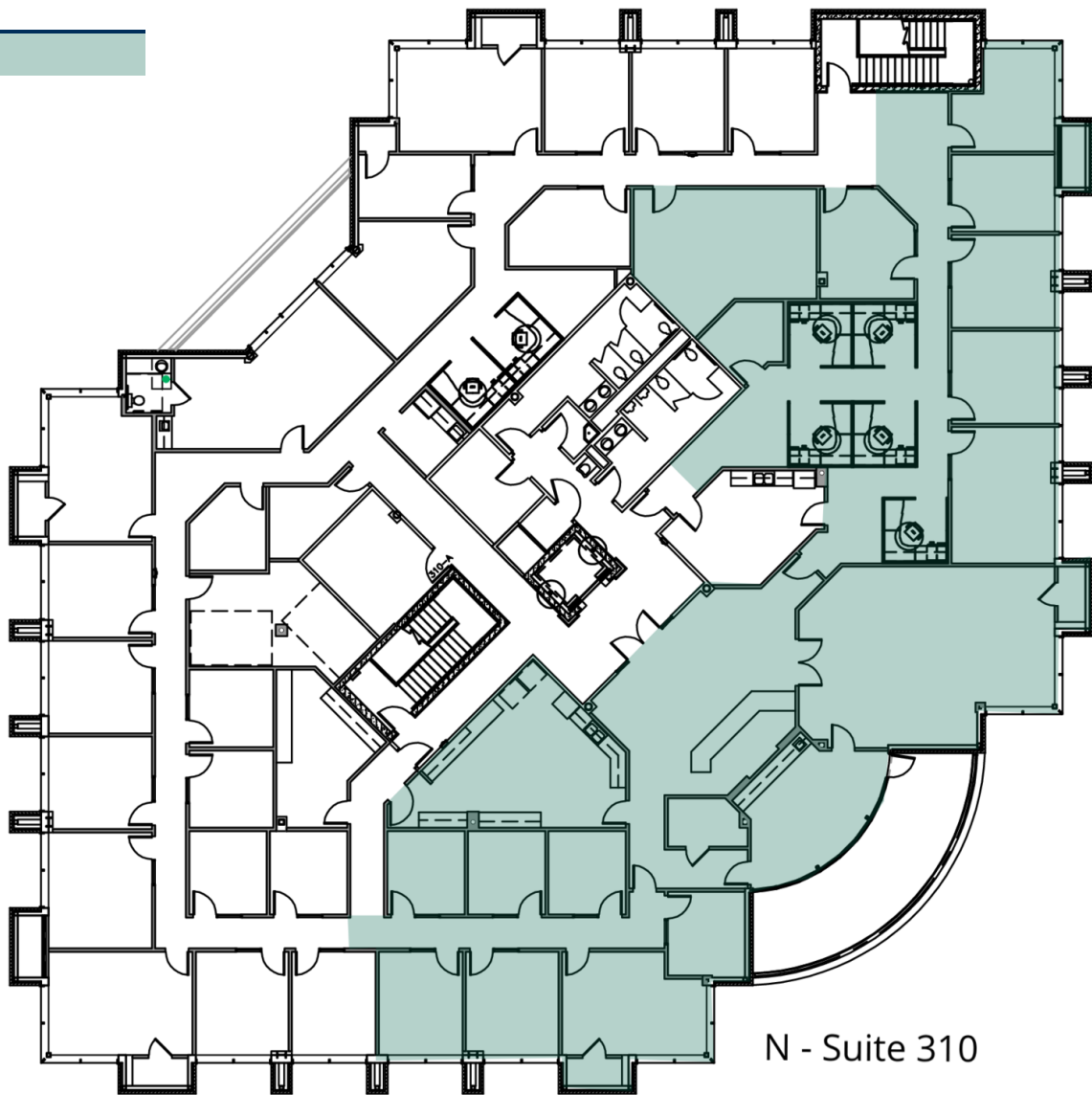
Available SF:	7,209 SF
Lease Rate:	Negotiable
Lease Type:	Full Service
Building Size:	82,722 SF
Submarket:	Northwest

TRE DUPUY
405.239.1210
tdupuy@priceedwards.com
priceedwards.com

IAN SELF
405.239.1271
iself@priceedwards.com
priceedwards.com

LEGEND

Available



N - Suite 310

AVAILABLE SPACES

SUITE	TENANT	SIZE	TYPE	RATE
N - Suite 310	Available	7,209 SF	Full Service	Negotiable

TRE DUPUY
405.239.1210
tdupuy@priceedwards.com
priceedwards.com

IAN SELF
405.239.1271
iself@priceedwards.com
priceedwards.com