

HEART OF MIDTOWN SMALL OFFICE SUITE

CREATIVE OFFICE SPACE FOR LEASE



OFFERING SUMMARY

AVAILABLE: 2,797 RSF

SUITE 2 634 RSF

SUITE 4 1,198 RSF

SUITE 5 965 RSF

Lease Rate: \$17.50 RSF

Parking: Free Surface Parking

Lease Type: NNN

PROPERTY OVERVIEW

Built in 1906, this iconic 2-story federal style building has been incrementally improved and remodeled over the last 10 years. Sitting in the heart of the fashionable Midtown District, this is a rare opportunity for a small office in this area. Free surface parking, new mechanical systems and abundant windows, makes this building ideal for creative, professional occupancy in an artistic and inspiring environment.

SPACE DESCRIPTION

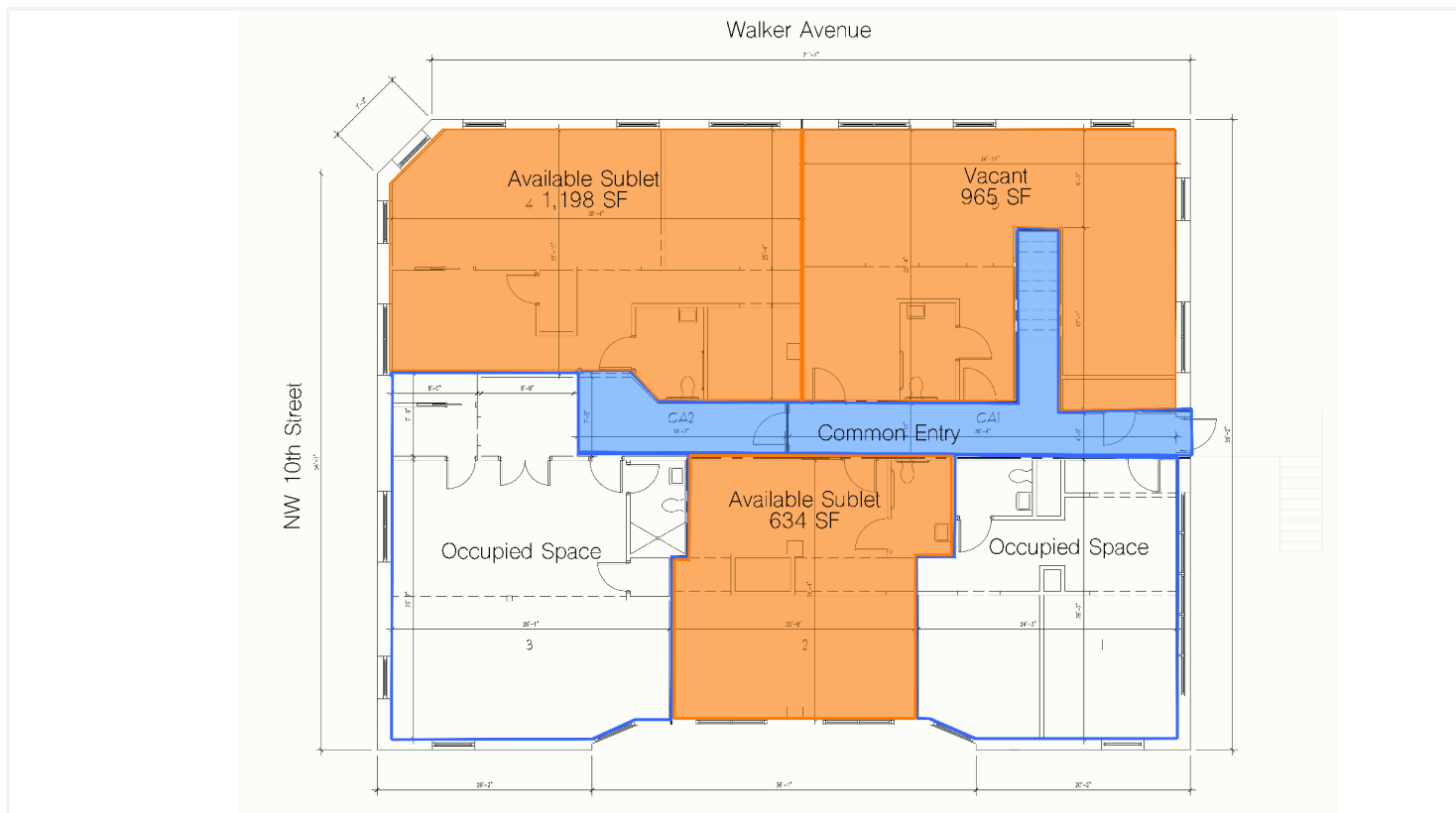
- * Abundant glass lines with panoramic views of downtown
- * Entry off Walker or, from the parking on the east side
- * Wooden sash- style windows and exposed brick walls
- * On-site free surface parking

For more information please contact:

C. DEREK JAMES
djames@priceedwards.com
405.239.1206

HEART OF MIDTOWN

FLOOR PLANS



For more information please contact:

C. DEREK JAMES
djames@pricedwards.com
405.239.1206