

CROSS ROCK PLAZA I

13801 WIRELESS WAY OKLAHOMA CITY, OK 73134



LOCATION DESCRIPTION

Cross Rock Place is conveniently located at the northeast corner of Portland Ave and W Memorial in a professional park with lush landscapes and scenic views including a duck pond across from the building. The property is located at the Hefner Parkway / Kirkpatrick Turnpike / Memorial intersection with on-ramps and exits for east bound, westbound, north and south traffic.

PROPERTY HIGHLIGHTS

- Controlled Access
- Covered Parking
- Waterfront
- Large Breakroom
- Surrounded by shops, restaurants, and other services
- 5.68 / 1,000 RSF parking ratio

OFFERING SUMMARY

Lease Rate:	\$15.00 RSF/yr (NNN)
Available SF:	19,108 - 22,533 RSF
1st Floor:	±19,108 RSF
2nd Floor:	±19,108 RSF
Lower Level:	±22,533 RSF
Building Size:	60,749 SF

CRAIG TUCKER

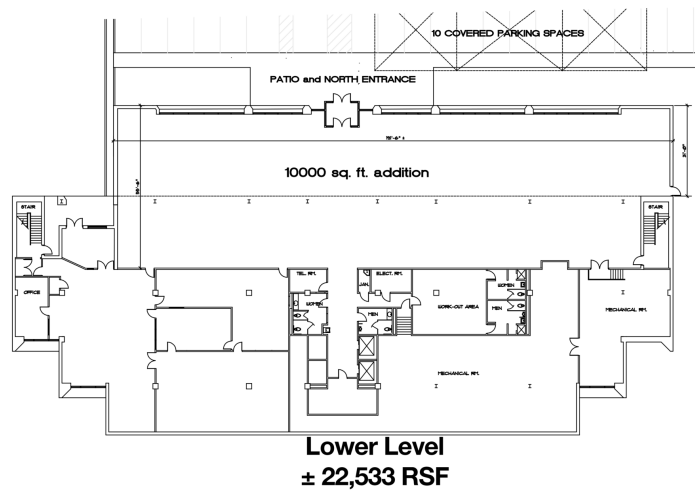
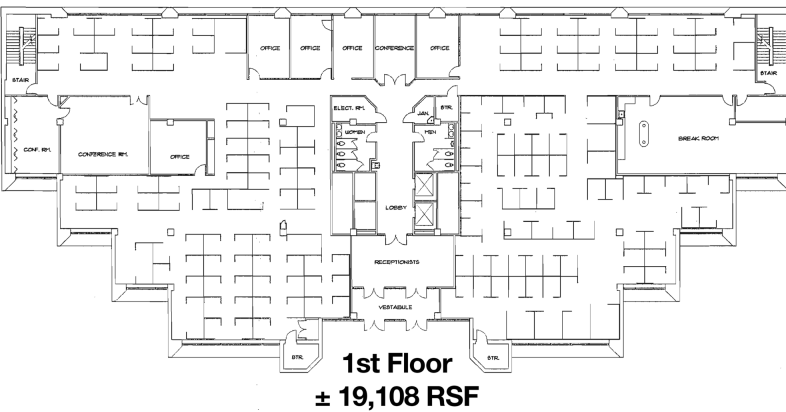
ctucker@pricedwards.com
O: 405.239.1202 C: 405.641.3218

TOM FIELDS

tfields@pricedwards.com
O: 405.239.1205

CROSS ROCK PLAZA I

13801 WIRELESS WAY OKLAHOMA CITY, OK 73134



CRAIG TUCKER

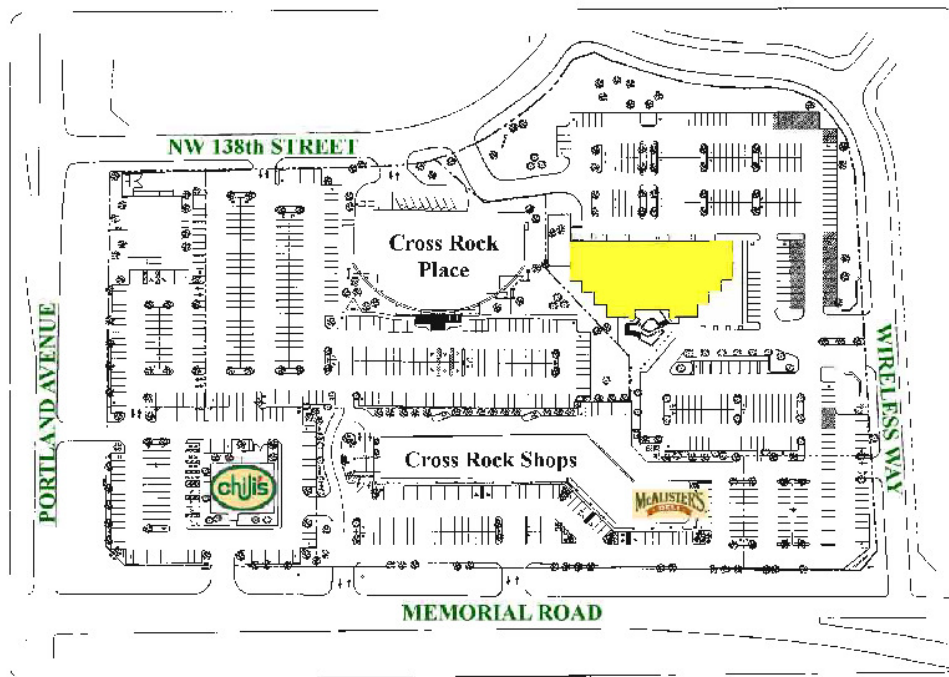
ctucker@priceedwards.com
O: 405.239.1202 C: 405.641.3218

TOM FIELDS

tfields@priceedwards.com
O: 405.239.1205

CROSS ROCK PLAZA I

13801 WIRELESS WAY OKLAHOMA CITY, OK 73134



CRAIG TUCKER

ctucker@pricedwards.com
O: 405.239.1202 C: 405.641.3218

TOM FIELDS

tfields@pricedwards.com
O: 405.239.1205