

## CROSS ROCK PLAZA I

13801 WIRELESS WAY OKLAHOMA CITY, OK 73134



## LOCATION DESCRIPTION

Cross Rock Place is conveniently located at the northeast corner of Portland Ave and W Memorial in a professional park with lush landscapes and scenic views including a duck pond across from the building. The property is located at the Hefner Parkway / Kirkpatrick Turnpike / Memorial intersection with on-ramps and exits for east bound, westbound, north and south traffic.

## PROPERTY HIGHLIGHTS

- Controlled Access
- Covered Parking
- Waterfront
- Large Breakroom
- Surrounded by shops, restaurants, and other services
- 5.68 / 1,000 RSF parking ratio

## OFFERING SUMMARY

Lease Rate:	\$15.00 RSF/yr NNN
Available SF:	±19,312 - 61,289 RSF
1st Floor:	±20,313 RSF
2nd Floor:	±21,664 RSF
Lower Level:	±19,312 RSF
Building Size:	61,289 SF

## CRAIG TUCKER

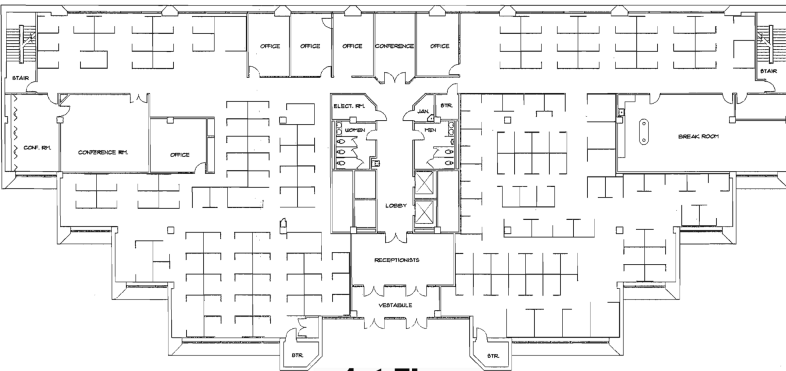
ctucker@priceedwards.com  
O: 405.239.1202 C: 405.641.3218

## TOM FIELDS

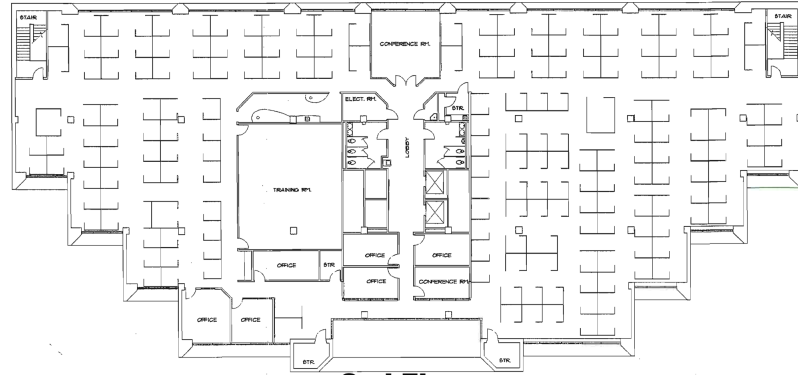
tfields@priceedwards.com  
O: 405.239.1205

## CROSS ROCK PLAZA I

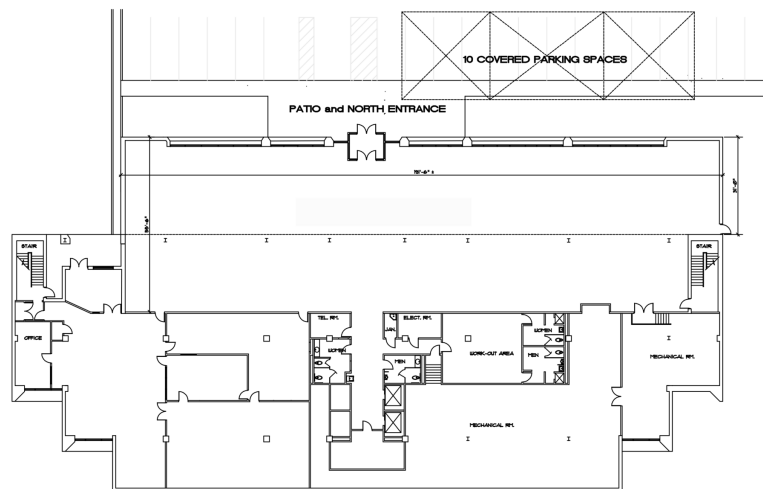
13801 WIRELESS WAY OKLAHOMA CITY, OK 73134



**1st Floor**  
**±20,313 RSF**



**2nd Floor**  
**±21,664 RSF**



**Lower Level**  
**± 19,312 RSF**

### CRAIG TUCKER

ctucker@priceedwards.com

O: 405.239.1202 C: 405.641.3218

### TOM FIELDS

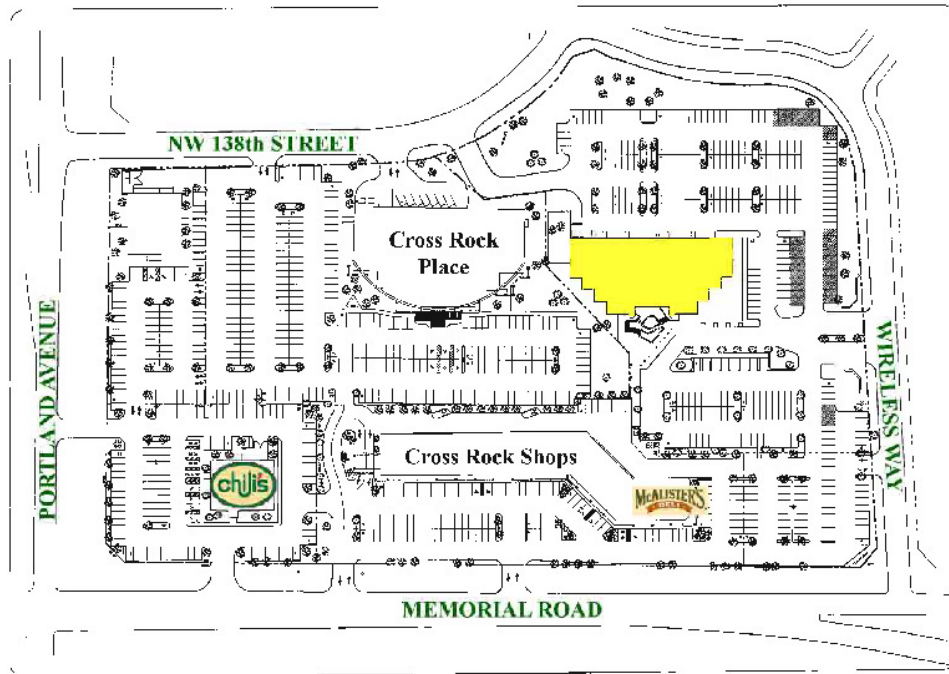
tfields@priceedwards.com

O: 405.239.1205



## CROSS ROCK PLAZA I

13801 WIRELESS WAY OKLAHOMA CITY, OK 73134



### CRAIG TUCKER

ctucker@pricedwards.com  
O: 405.239.1202 C: 405.641.3218

### TOM FIELDS

tfields@pricedwards.com  
O: 405.239.1205