



## OFFERING SUMMARY

Lease Rate:	\$15.00 SF/yr (Full Service) with 3% annual increases
Suite 100:	±1980 RSF
Year Built:	1915
Year Renovated:	1997
Cross Streets:	Broadway & NW 4th
Market:	CBD

## PROPERTY OVERVIEW

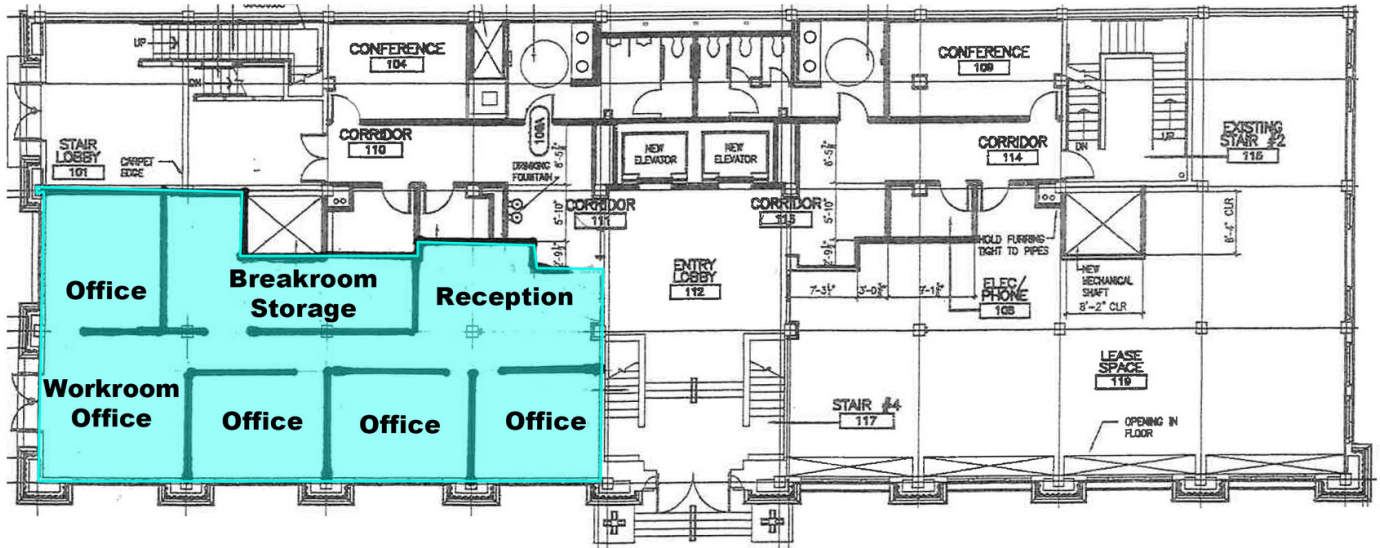
The Historic E.K. Gaylord Building is located at the northeast corner of 4th and Broadway in Oklahoma City, providing easy accessibility along with the benefits of downtown. The architecturally significant building is listed on the National Register of Historic Places.

## PROPERTY HIGHLIGHTS

- 5-story tower
- Adjacent to the YMCA of Greater OKC and its daycare center
- Cardkey access
- Free conference room available

**TOM FIELDS**  
405.239.1205  
tfields@priceedwards.com  
priceedwards.com

**CRAIG TUCKER**  
405.239.1202  
ctucker@priceedwards.com  
priceedwards.com



**TOM FIELDS**  
405.239.1205  
tfields@priceedwards.com  
priceedwards.com

**CRAIG TUCKER**  
405.239.1202  
ctucker@priceedwards.com  
priceedwards.com