

EDMOND CROSSING

20 - 78 E 33rd Street, Edmond, OK 73013



RETAIL SPACE NOW AVAILABLE

Available SF:	2,000 - 7,950 SF
Suite 44	7,950 SF
Suite 58	3,000 SF
Suite 60	3,000 SF
Suite 74	2,000 SF
Suite 76	2,000 SF
Suites 58 & 60 Can Be Combined	6,000 SF
Suites 74 & 76 Can Be Combined	4,000 SF
Lease Rate:	Negotiable
Building Size:	159,625 SF
Year Built:	1995

Edmond Crossing is ideally located at one of the busiest retail intersection in Edmond, with excellent access and good co-tenancy.

Located on East 33rd Street (immediately east of Broadway Extension.)

Tenants include: TJ Maxx, Cato, Jason's Deli, Aaron's, Chick-fil-A, McDonald's, Taco Bell, and many more.

Major Tenants coming soon: HomeGoods, Dollar Tree and the Surge Adventure Park.

02072020

EV ERNST

Retail Specialist
eernst@priceedwards.com
405.843.7474
210 Park Ave, Suite 700, Oklahoma City, OK 73102
priceedwards.com

GEORGE WILLIAMS, CCIM

Retail Investment Specialist
gwilliams@priceedwards.com
405.239.1270
210 Park Ave, Suite 700, Oklahoma City, OK 73102
priceedwards.com

GIRMA MOANING

Retail Investment Specialist
gmoaning@priceedwards.com
405.843.7474
210 Park Ave, Suite 700, Oklahoma City, OK 73102
priceedwards.com

EDMOND CROSSING

20 - 78 E 33rd Street, Edmond, OK 73013



DEMOGRAPHICS (per 2010 Census; 5 Miles Radius)

Total Population	130,524
Population Density	130,524
Median Age	33.0
Median Age (Male)	31.4
Median Age (Female)	34.4
Total Households	50,834
# of Persons Per HH	2.6
Average HH Income	\$79,536
Average House Value	\$203,101

TRAFFIC COUNTS (per ACOG)

Broadway	north	31,906
Broadway	south	53,600
E 33rd St	east	21,117
E 33rd St	west	15,952

EV ERNST

Retail Specialist
 ernst@priceedwards.com
 405.843.7474
 210 Park Ave, Suite 700, Oklahoma City, OK 73102
 priceedwards.com

GEORGE WILLIAMS, CCIM

Retail Investment Specialist
 gwilliams@priceedwards.com
 405.239.1270
 210 Park Ave, Suite 700, Oklahoma City, OK 73102
 priceedwards.com

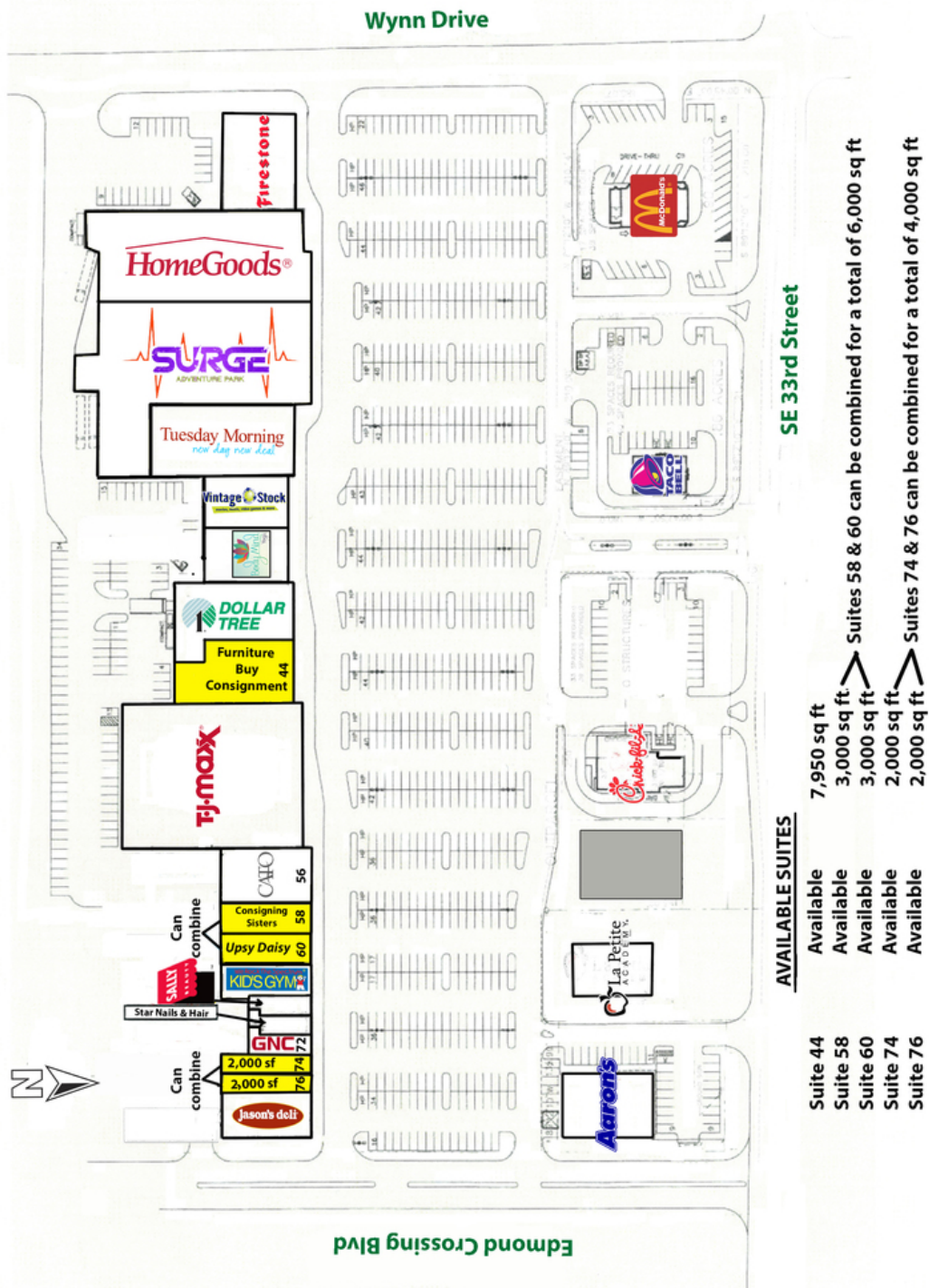
GIRMA MOANING

Retail Investment Specialist
 gmoaning@priceedwards.com
 405.843.7474
 210 Park Ave, Suite 700, Oklahoma City, OK 73102
 priceedwards.com

The information above has been obtained from sources believe reliable. While we do not doubt its accuracy, we have not verified it and make no guarantee, warranty, or representation about it. You and your legal and technical advisors should conduct a careful, independent investigation of the property to determine to your satisfaction to the suitability of the property for your needs.

EDMOND CROSSING

20 - 78 E 33rd Street, Edmond, OK 73013



AVAILABLE SUITES	
Suite 44	7,950 sq ft
Suite 58	3,000 sq ft
Suite 60	3,000 sq ft
Suite 74	2,000 sq ft
Suite 76	2,000 sq ft

Suites 58 & 60 can be combined for a total of 6,000 sq ft
Suites 74 & 76 can be combined for a total of 4,000 sq ft

EV ERNST

Retail Specialist
 ernst@priceedwards.com
 405.843.7474
 210 Park Ave, Suite 700, Oklahoma City, OK 73102
 priceedwards.com

GEORGE WILLIAMS, CCIM

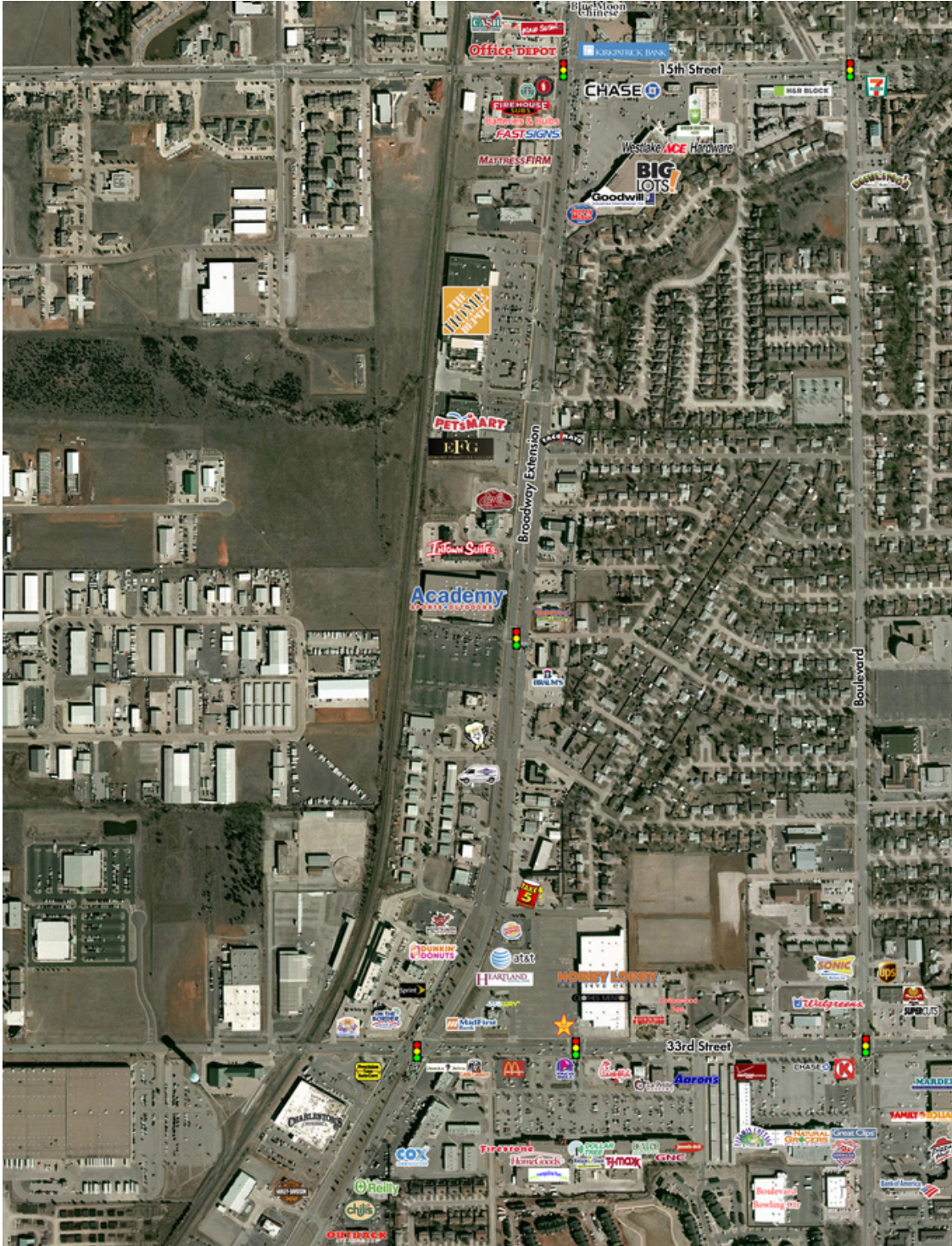
Retail Investment Specialist
 gwilliams@priceedwards.com
 405.239.1270
 210 Park Ave, Suite 700, Oklahoma City, OK 73102
 priceedwards.com

GIRMA MOANING

Retail Investment Specialist
 gmoaning@priceedwards.com
 405.843.7474
 210 Park Ave, Suite 700, Oklahoma City, OK 73102
 priceedwards.com

EDMOND CROSSING

20 - 78 E 33rd Street, Edmond, OK 73013



EV ERNST

Retail Specialist

eernst@priceedwards.com

405.843.7474

210 Park Ave, Suite 700, Oklahoma City, OK 73102

priceedwards.com

GEORGE WILLIAMS, CCIM

Retail Investment Specialist

gwilliams@priceedwards.com

405.239.1270

210 Park Ave, Suite 700, Oklahoma City, OK 73102

priceedwards.com

GIRMA MOANING

Retail Investment Specialist

gmoaning@priceedwards.com

405.843.7474

210 Park Ave, Suite 700, Oklahoma City, OK 73102

priceedwards.com