



## RETAIL SPACE NOW AVAILABLE

Lease Rate:	Negotiable
Available SF:	2,000 - 7,950 SF
Suite 44	7,950 SF
Suite 58	3,000 SF
Suite 60	3,000 SF
Suite 74	2,000 SF
Suite 76	2,000 SF
Lease Rate:	Negotiable
Building Size:	159,625 SF
Year Built:	1995 04072020

## PROPERTY OVERVIEW

Edmond Crossing is ideally located at one of the busiest retail intersections in Edmond, with excellent access and good co-tenancy.

Located on East 33rd Street (immediately east of Broadway Extension).

Tenants include: HomeGoods, TJ Maxx, Cato, Dollar Tree, Chick-fil-A, McDonalds, Taco Bell, Aarons, Surge Adventure Park, GNC, Jason's Deli and many more.

Suites 58 & 60 can be combined for a total of 6,000 SF

Suites 74 & 76 can be combined for a total of 4,000 SF

**EV ERNST**  
405.843.7474  
ernst@pricedwards.com  
pricedwards.com

**GEORGE WILLIAMS, CCIM**  
405.239.1270  
gwilliams@pricedwards.com  
pricedwards.com

**GIRMA MOANING**  
405.239.1244  
gmoaning@pricedwards.com  
pricedwards.com



# Edmond Crossing

20 - 78 E 33rd Street, Edmond, OK 73013



### DEMOGRAPHICS (PER 2010 CENSUS; 5 MILES RADIUS)

Total Population	130,524
Population Density	130,524
Median Age	33.0
Median Age (Male)	31.4
Median Age (Female)	34.4
Total Households	50,834
# of Persons Per HH	2.6
Average HH Income	\$79,536
Average House Value	\$203,101

### TRAFFIC COUNTS (PER ACOG)

Broadway	North	31,906
Broadway	South	53,600
E 33rd	East	21,117
E 33rd	West	19,441

**EV ERNST**  
405.843.7474  
ernst@pricedwards.com  
pricedwards.com

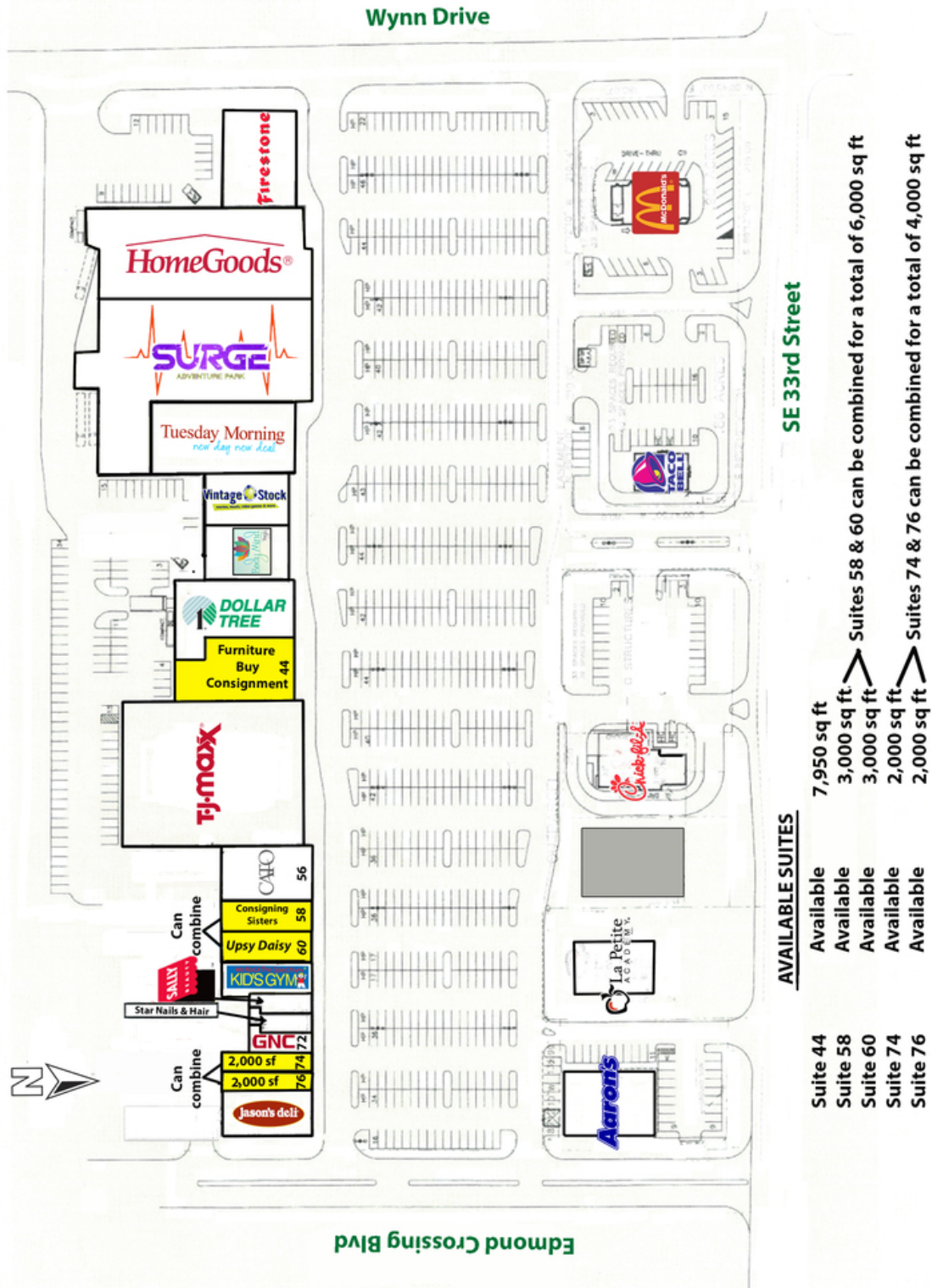
**GEORGE WILLIAMS, CCIM**  
405.239.1270  
gwilliams@pricedwards.com  
pricedwards.com

**GIRMA MOANING**  
405.239.1244  
gmoaning@pricedwards.com  
pricedwards.com



# Edmond Crossing

20 - 78 E 33rd Street, Edmond, OK 73013



**EV ERNST**  
405.843.7474  
eernst@pricedwards.com  
pricedwards.com

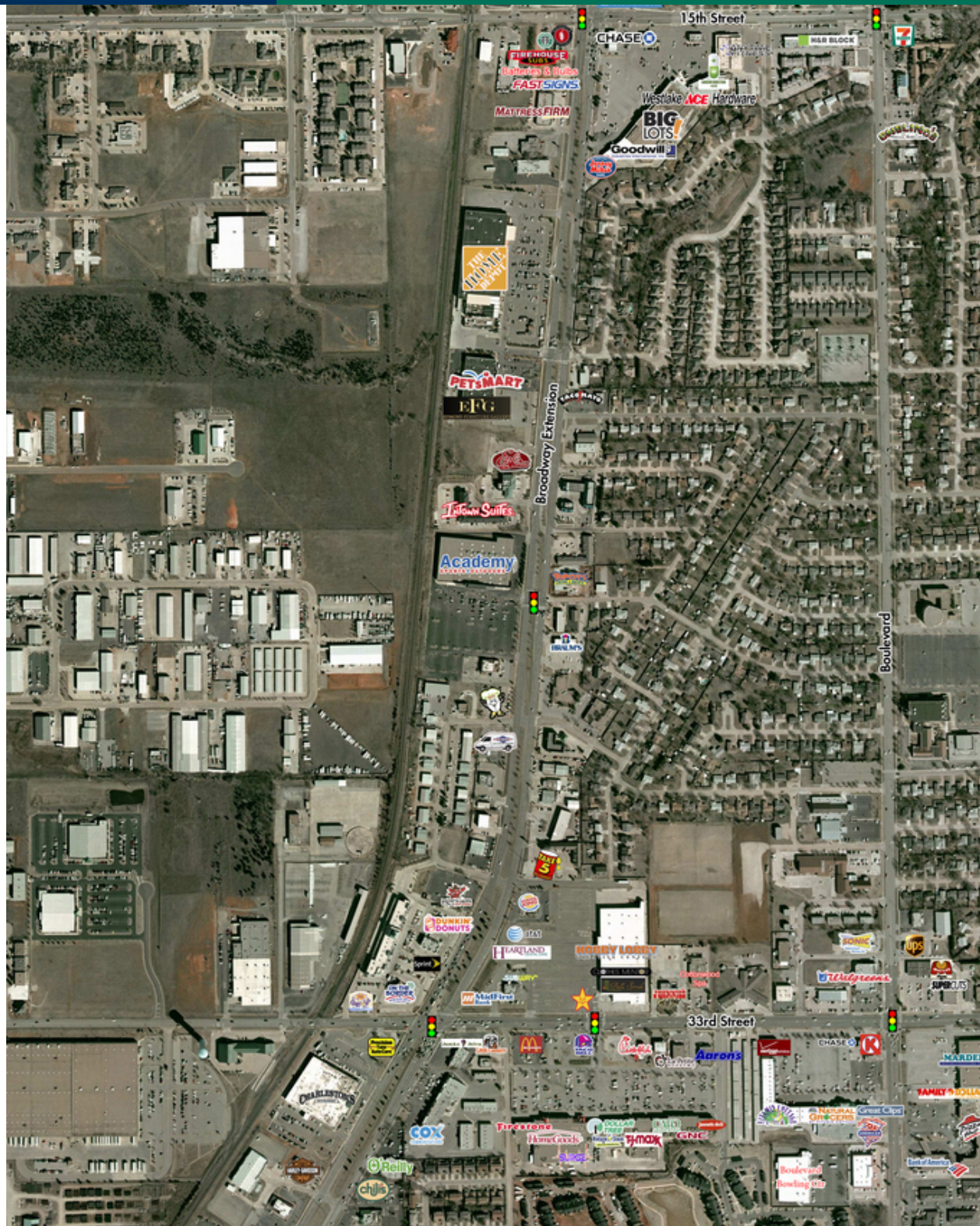
**GEORGE WILLIAMS, CCIM**  
405.239.1270  
gwilliams@pricedwards.com  
pricedwards.com

**GIRMA MOANING**  
405.239.1244  
gmoaning@pricedwards.com  
pricedwards.com



# Edmond Crossing

20 - 78 E 33rd Street, Edmond, OK 73013



**EV ERNST**  
405.843.7474  
eernst@pricedwards.com  
pricedwards.com

**GEORGE WILLIAMS, CCIM**  
405.239.1270  
gwilliams@pricedwards.com  
pricedwards.com

**GIRMA MOANING**  
405.239.1244  
gmoaning@pricedwards.com  
pricedwards.com