

EDMOND CROSSING

20 - 78 E 33RD STREET, EDMOND, OK 73013



PROPERTY DESCRIPTION

Edmond Crossing is ideally located at one of the busiest retail intersection in Edmond, with excellent access and good co-tenancy.

Located on East 33rd Street (immediately east of Broadway Extension).

Tenants include: HomeGoods, TJ Maxx, Cato, Dollar Tree, Chick-fil-A, McDonalds, Taco Bell, Aarons, Surge Adventure Park, Jason's Deli and many more.

TRAFFIC COUNTS

Broadway	north	31,906
Broadway	south	53,600
E 33rd	east	21,117
E 33rd	west	19,441

OFFERING SUMMARY

Lease Rate	Negotiable
Available SF:	2,000 - 11,188 SF
Building Size:	160,818 SF
Year Built:	1995

SPACES	LEASE RATE	SPACE SIZE
Suite 24	Negotiable	11,188 SF
Suite 76	Negotiable	2,000 SF

EV ERNST

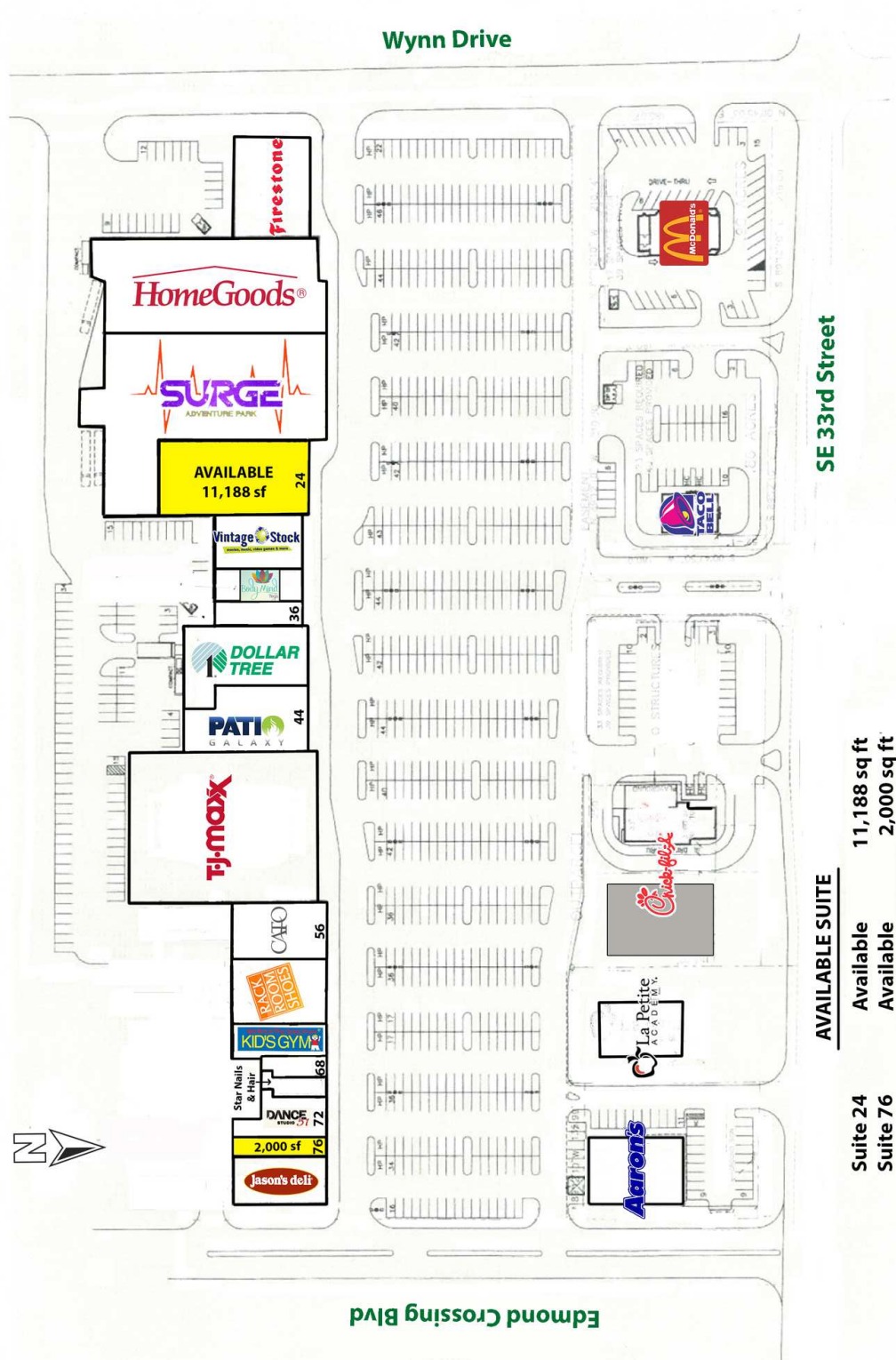
ernst@priceedwards.com
O: 405.843.7474

GIRMA MOANING

gmoaning@priceedwards.com
O: 405.239.1244 C: 405.664.0062

EDMOND CROSSING

20 - 78 E 33RD STREET, EDMOND, OK 73013



SE 33rd Street

AVAILABLE SUITE

	Available	11,188 sq ft
	Available	2,000 sq ft
Suite 24		
Suite 76		

EV ERNST

ernst@priceedwards.com
O: 405.843.7474

GIRMA MOANING

gmoaning@priceedwards.com
O: 405.239.1244 C: 405.664.0062

EDMOND CROSSING

20 - 78 E 33RD STREET EDMOND, OK 73013



POPULATION	1 MILE	3 MILES	5 MILES
Total Population	9,734	60,336	130,524
Average Age	28.6	31.4	33.0
Average Age (Male)	26.3	29.6	31.4
Average Age (Female)	30.5	33.1	34.4
HOUSEHOLDS & INCOME	1 MILE	3 MILES	5 MILES
Total Households	3,493	23,238	50,834
# of Persons per HH	2.8	2.6	2.6
Average HH Income	\$62,274	\$71,659	\$79,536
Average House Value	\$138,062	\$185,561	\$203,101

* Demographic data derived from 2020 ACS - US Census

06122024

EV ERNST

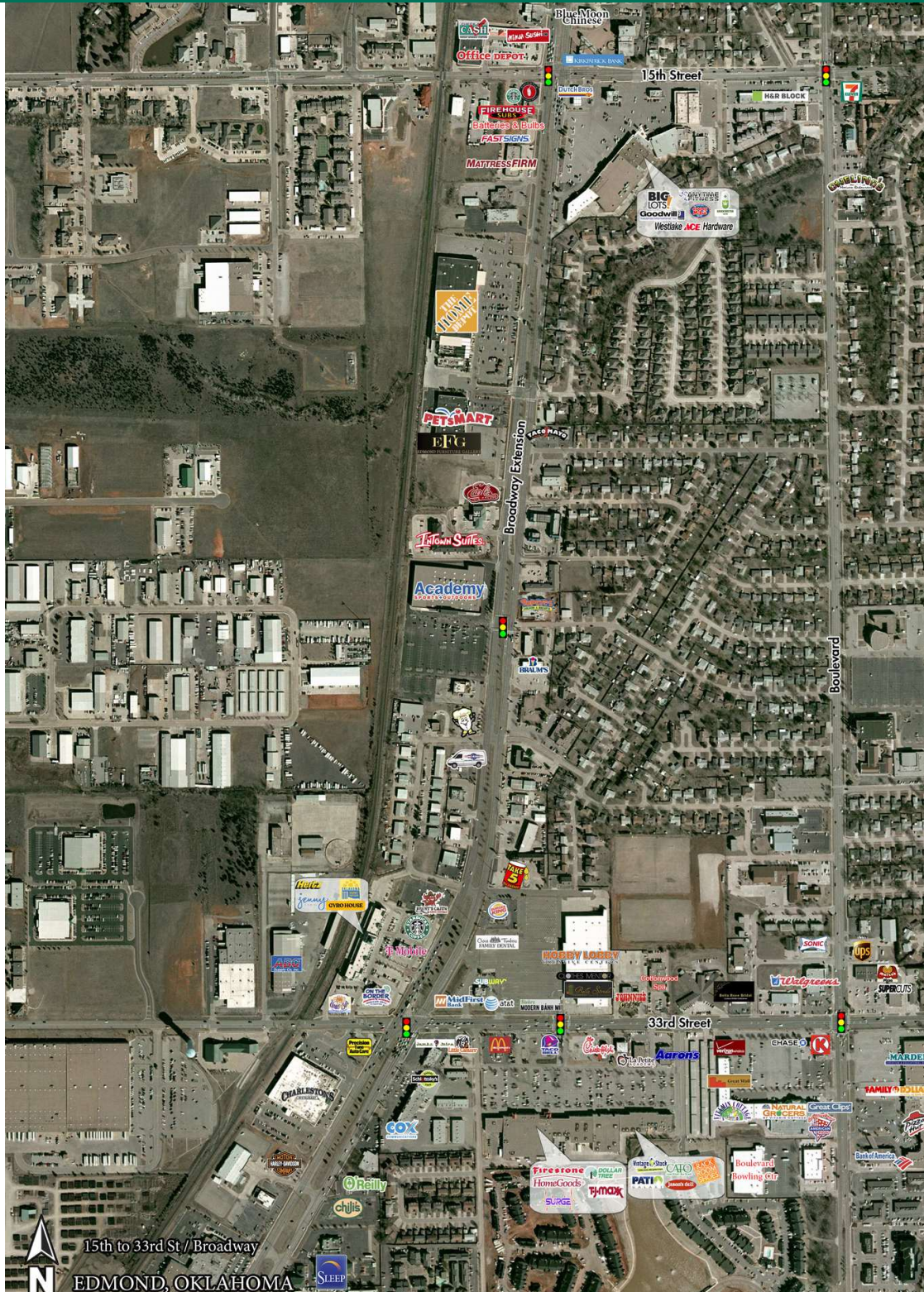
ernst@pricedwards.com
O: 405.843.7474

GIRMA MOANING

gmoaning@pricedwards.com
O: 405.239.1244 C: 405.664.0062

EDMOND CROSSING

20 - 78 E 33RD STREET, EDMOND, OK 73013



EV ERNST

ernst@pricedwards.com
O: 405.843.7474

GIRMA MOANING

gmoaning@pricedwards.com
O: 405.239.1244 C: 405.664.0062