



PROPERTY DESCRIPTION

Edmond Crossing is ideally located at one of the busiest retail intersection in Edmond, with excellent access and good co-tenancy.

Located on East 33rd Street (immediately east of Broadway Extension).

Tenants include: HomeGoods, TJ Maxx, Cato, Dollar Tree, Chick-fil-A, McDonalds, Taco Bell, Aarons, Surge Adventure Park, Jason's Deli and many more.

TRAFFIC COUNTS

Broadway	north	31,906
Broadway	south	53,600
E 33rd	east	21,117
E 33rd	west	19,441

OFFERING SUMMARY

Lease Rate	Negotiable
Available SF:	2,000 - 11,188 SF
Building Size:	160,818 SF
Year Built:	1995

SPACES	LEASE RATE	SPACE SIZE
Suite 24	Negotiable	11,188 SF
Suite 64	Negotiable	3,530 SF
Suite 76	Negotiable	2,000 SF

EV ERNST

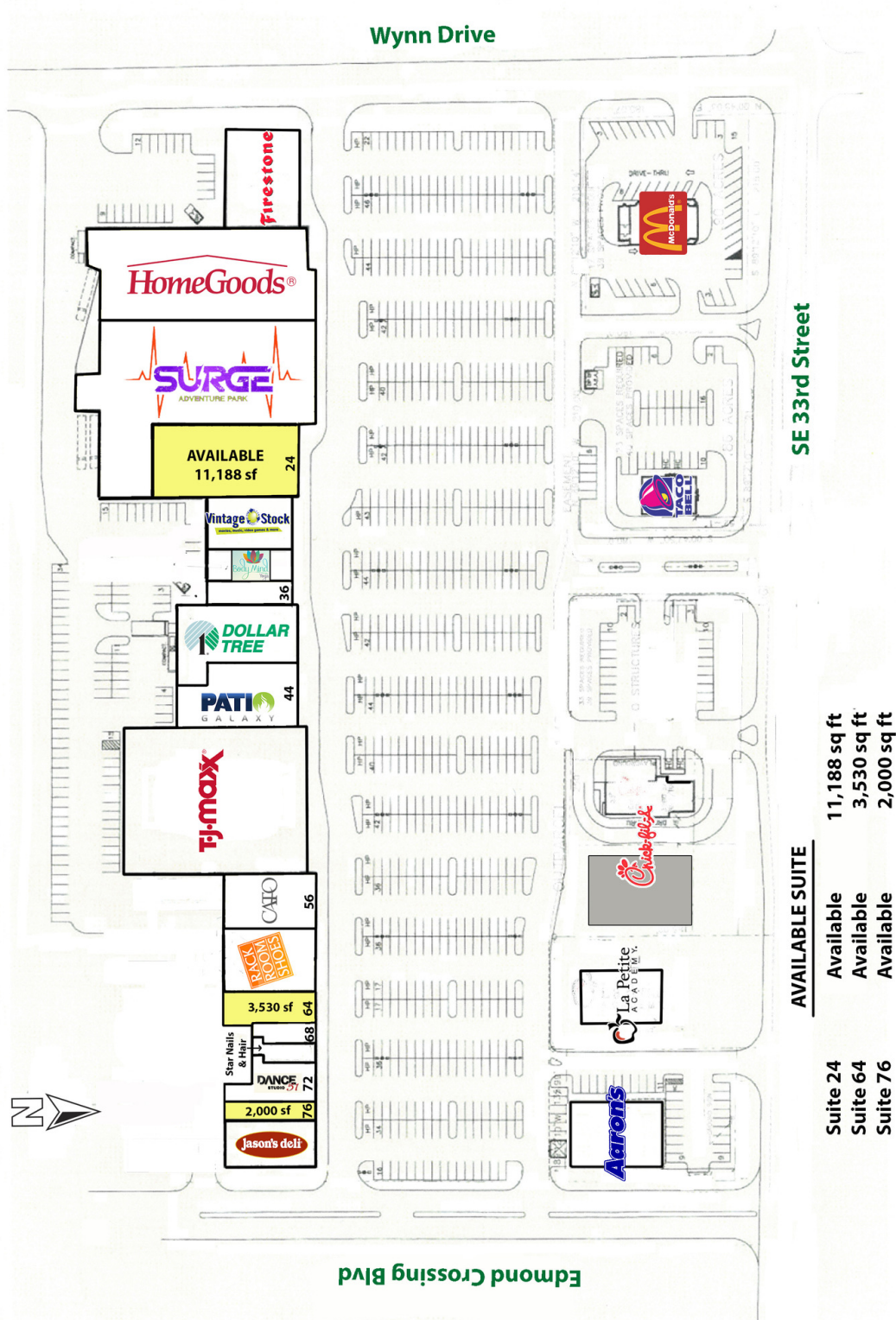
ernst@priceedwards.com
O: 405.239.1250 C: 405.830.8505

GIRMA MOANING

gmoaning@priceedwards.com
O: 405.239.1244 C: 405.664.0062

EDMOND CROSSING

20 - 78 E 33RD STREET, EDMOND, OK 73013



SE 33rd Street

AVAILABLE SUITE

Suite	Area	Size
Suite 24	AVAILABLE	11,188 sq ft
Suite 64	AVAILABLE	3,530 sq ft
Suite 76	AVAILABLE	2,000 sq ft

EV ERNST

ernst@priceedwards.com
O: 405.239.1250 C: 405.830.8505

GIRMA MOANING

gmoaning@priceedwards.com
O: 405.239.1244 C: 405.664.0062

EDMOND CROSSING

20 - 78 E 33RD STREET EDMOND, OK 73013



POPULATION	1 MILE	3 MILES	5 MILES
Total Population	9,734	60,336	130,524
Average Age	28.6	31.4	33.0
Average Age (Male)	26.3	29.6	31.4
Average Age (Female)	30.5	33.1	34.4
HOUSEHOLDS & INCOME	1 MILE	3 MILES	5 MILES
Total Households	3,493	23,238	50,834
# of Persons per HH	2.8	2.6	2.6
Average HH Income	\$62,274	\$71,659	\$79,536
Average House Value	\$138,062	\$185,561	\$203,101

* Demographic data derived from 2020 ACS - US Census

04152026

EV ERNST

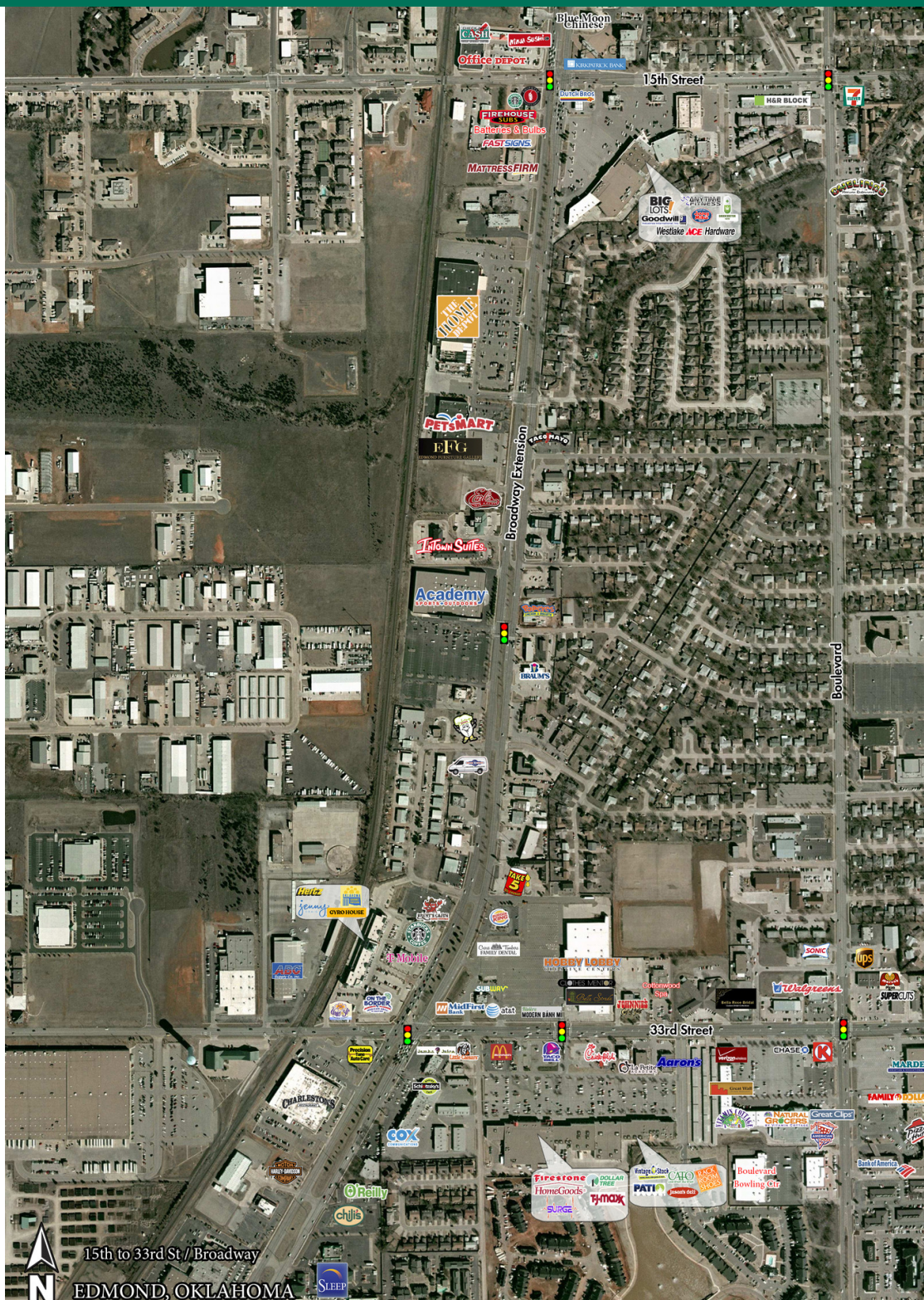
ernst@priceedwards.com
O: 405.239.1250 C: 405.830.8505

GIRMA MOANING

gmoaning@priceedwards.com
O: 405.239.1244 C: 405.664.0062

EDMOND CROSSING

20 - 78 E 33RD STREET, EDMOND, OK 73013



EV ERNST

ernst@priceedwards.com
O: 405.239.1250 C: 405.830.8505

GIRMA MOANING

gmoaning@priceedwards.com
O: 405.239.1244 C: 405.664.0062