



## OFFERING SUMMARY

Suite 100:	±3,188 RSF
Suite 175:	±1,762 RSF
Suite 155:	±1,817 RSF
Suite 200:	±4,397 RSF
Suite 250:	±2,430 RSF
Suite 275:	±3,948 RSF
Suite 280:	±1,840 RSF

Lease Rate: \$21.00 SF/yr (Full Service)  
with 3% annual increases

Building Size: 60,441 SF

Year Built: 2006

Market: Edmond

## LOCATION OVERVIEW

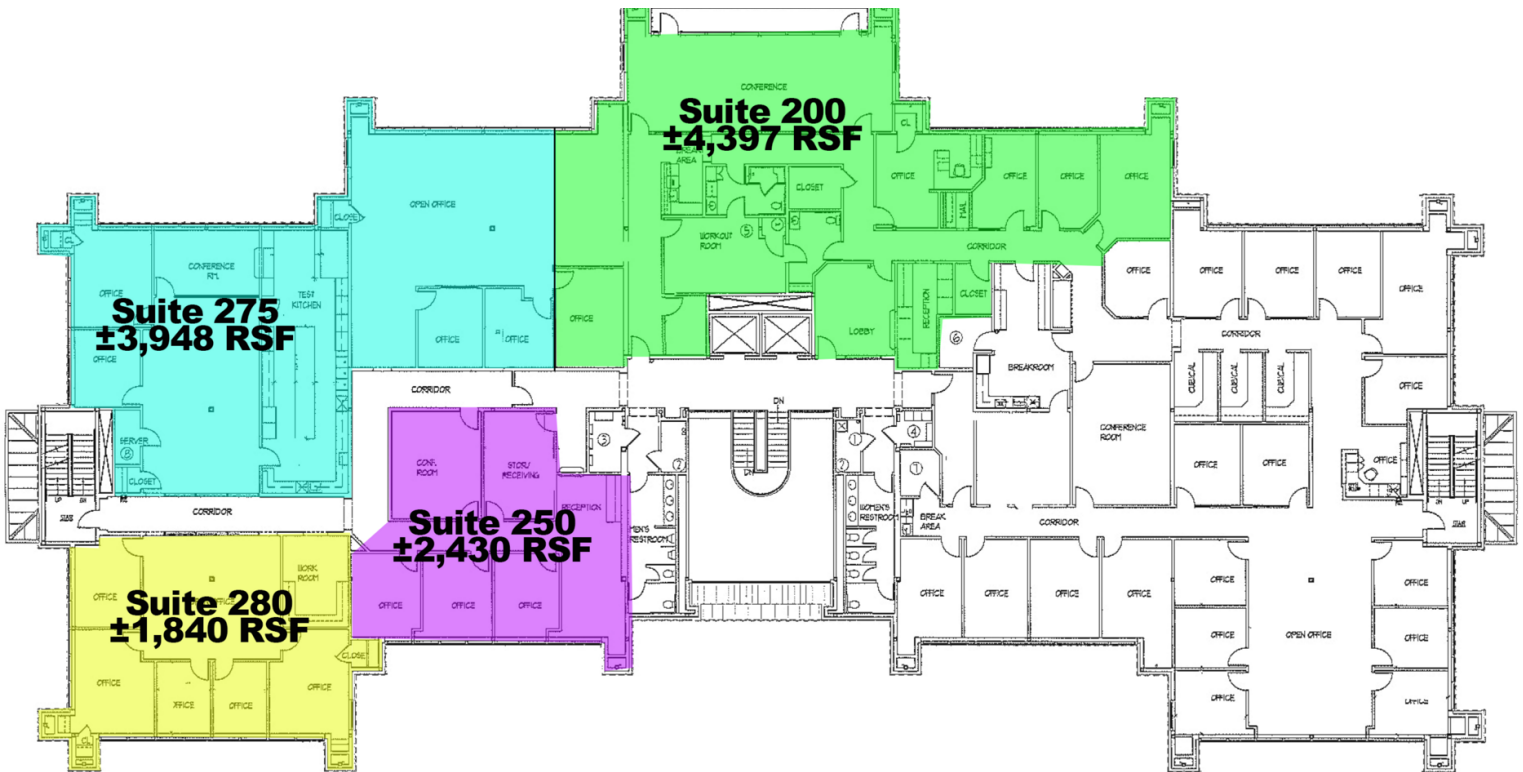
Fisher Hall is well located in a tremendous area of growth in the popular suburb of Edmond, Oklahoma. The area is becoming increasingly popular with office users due to its proximity to upper and middle management personnel as well as its accessibility to Oklahoma City. Its location is well served from the east and west by the Kilpatrick Turnpike and Memorial Road and from the south by Eastern Avenue and Broadway Extension just one mile to the west.

## PROPERTY HIGHLIGHTS

- Will divide
- Large conference room
- Overlooks a small lake
- Free on-site parking

**TOM FIELDS**  
405.239.1205  
tfields@priceedwards.com  
priceedwards.com

**CRAIG TUCKER**  
405.239.1202  
ctucker@priceedwards.com  
priceedwards.com



**TOM FIELDS**  
405.239.1205  
tfields@priceedwards.com  
priceedwards.com

**CRAIG TUCKER**  
405.239.1202  
ctucker@priceedwards.com  
priceedwards.com