

FISHER HALL

3540 S. Boulevard | Edmond, OK 73013



PROPERTY OVERVIEW

Fisher Hall is located in a tremendous area of growth in the popular suburb of Edmond, Oklahoma. The area is becoming increasingly popular with office users due to its proximity to upper and middle management personnel as well as its accessibility to Oklahoma City. Its location is well served from the east and west by the Kilpatrick Turnpike and Memorial Road and from the south by Eastern Avenue and Broadway Extension just one mile to the west.

OFFERING SUMMARY

LEASE RATE: \$21.00 SF/yr
(Full Service) w/3%
annual increase

SUITE 100	± 3,188 RSF
SUITE 155	± 1,817 RSF
SUITE 200	± 4,397 RSF
SUITE 205	± 7,413 RSF
SUITE 250	± 2,430 RSF

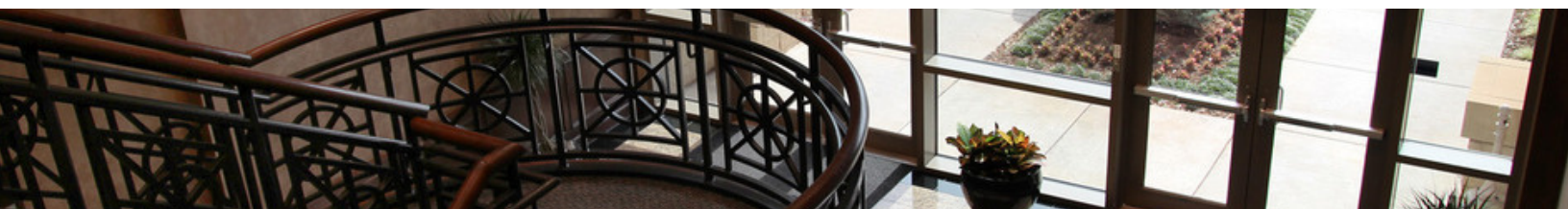
BUILDING SIZE: 60,441 SF

YEAR BUILT: 2006

MARKET: Edmond

PROPERTY HIGHLIGHTS

- Will divide
- Potential for ten corner offices
- Large conference room
- Overlooks a small lake
- Free on-site parking



TOM FIELDS

405.239.1205

TFIELDS@PRICEEDWARDS.COM

CRAIG TUCKER

405.843.7474

CTUCKER@PRICEEDWARDS.COM

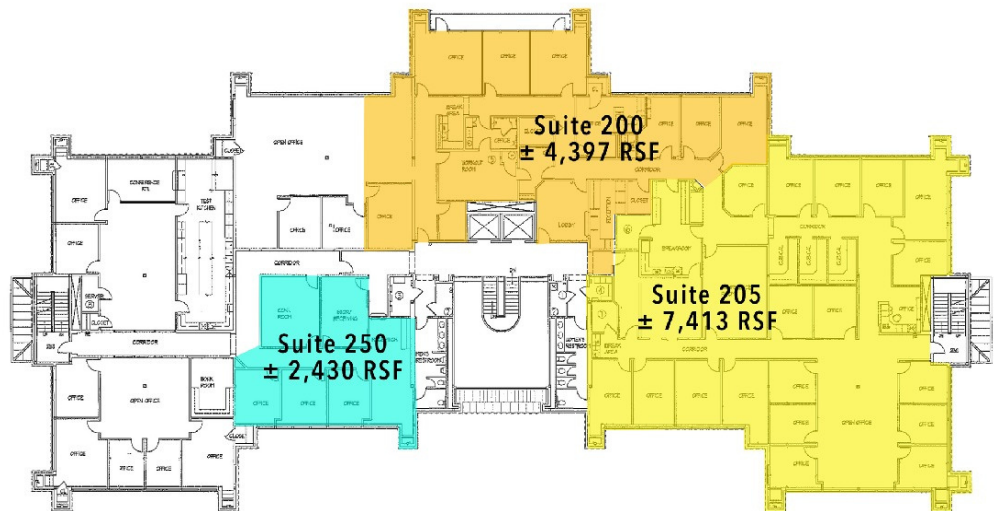
FISHER HALL

3540 S. Boulevard | Edmond, OK 73013

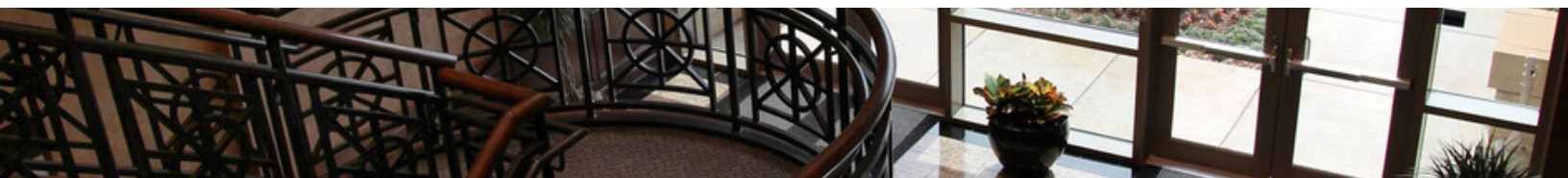
FISHER HALL
1st Floor



FISHER HALL
2nd Floor



← North



CRAIG TUCKER

405.843.7474

CTUCKER@PRICEEDWARDS.COM

TOM FIELDS

405.239.1205

TFIELDS@PRICEEDWARDS.COM