

PRICE EDWARDS AND CO.

FOR LEASE

7700 E 38TH ST

TULSA, OK 74145



JOSH LOVE

leasing and sales associate
jlove@priceedwards.com
O: 918.394.1000 C: 918.978.2428

Lease Rate

\$6.00 SF/yr (NNN)

7700 E 38TH ST

TULSA, OK 74145



PROPERTY DESCRIPTION

Total Area: 38,896 SF
Office/Lab Space: 19,289 SF
Warehouse Space: 19,607 SF

Fully climate-controlled and sprinklered.

Warehouse Features:

- 3 drive-in doors
- One 18' x 16'
- One 16' x 16'
- One 10' x 10'
- 1 UPS dock door
- 12' - 30' clear height
- Power: 4,000-amp heavy power available
- Compressed air

Office Features: Includes private offices, conference rooms, bullpen areas, lab/R&D areas, and shop offices.

Yard: Fenced yard for security and storage.

Location: Conveniently located in central Tulsa, OK, with easy access to major highways.

OFFERING SUMMARY

Lease Rate:	\$6.00 SF/yr (NNN)
Number of Units:	1
Available SF:	38,896 SF
Lot Size:	113,095 SF
Building Size:	38,896 SF

DEMOGRAPHICS	1 MILE	3 MILES	5 MILES
Total Households	2,962	40,337	110,169
Total Population	7,143	94,015	262,612
Average HH Income	\$65,766	\$71,544	\$81,932

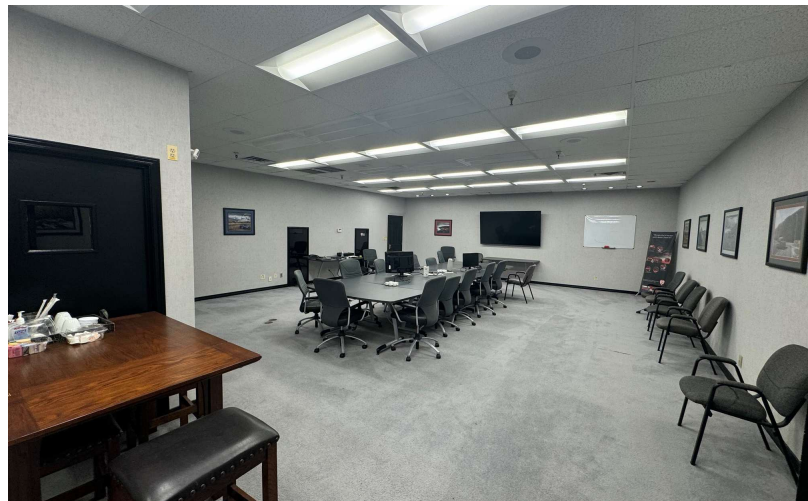
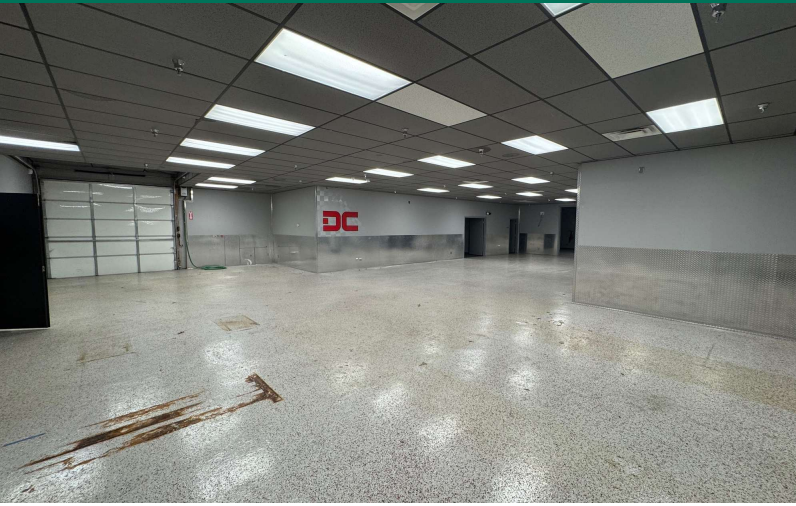
JOSH LOVE

jlove@priceedwards.com

O: 918.394.1000 C: 918.978.2428

7700 E 38TH ST

TULSA, OK 74145



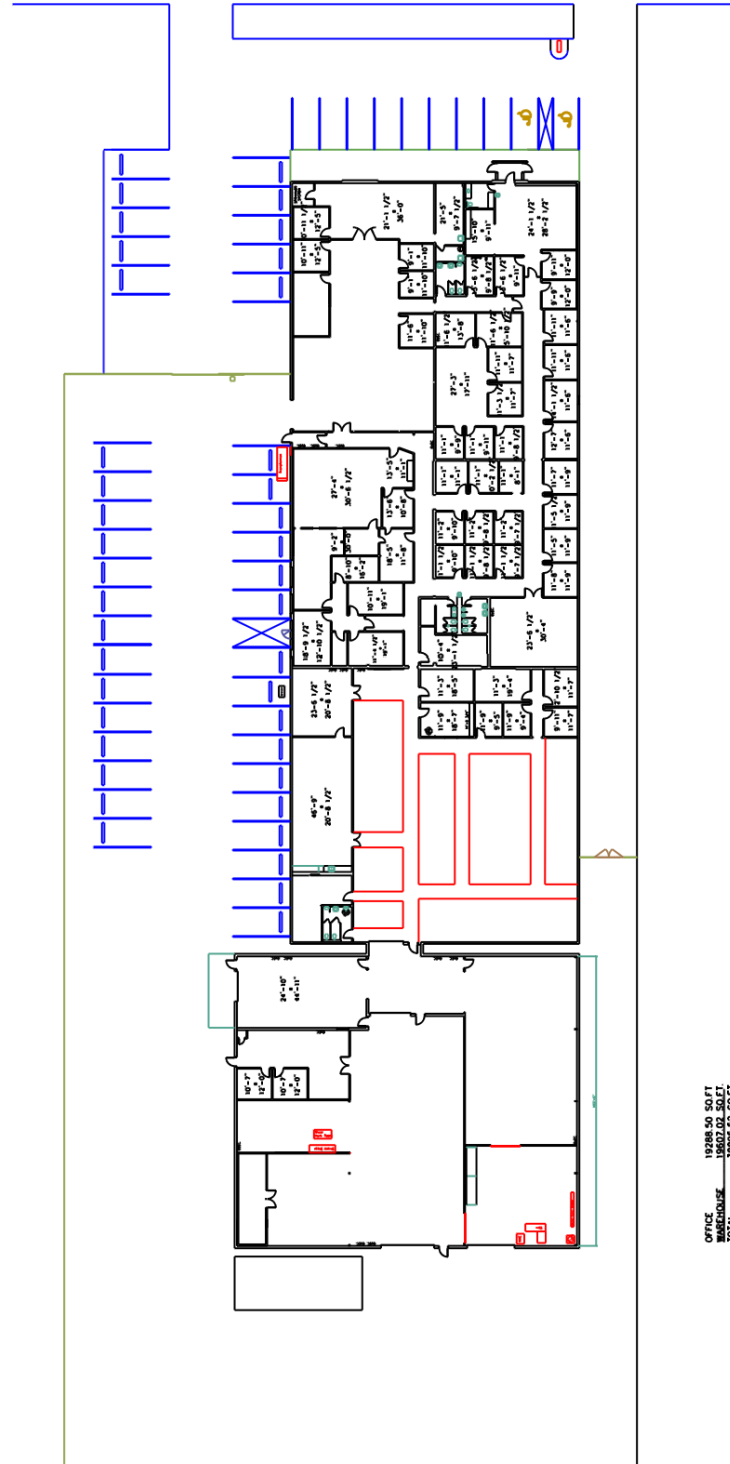
JOSH LOVE

jlove@priceedwards.com

O: 918.394.1000 C: 918.978.2428

7700 E 38TH ST

TULSA, OK 74145



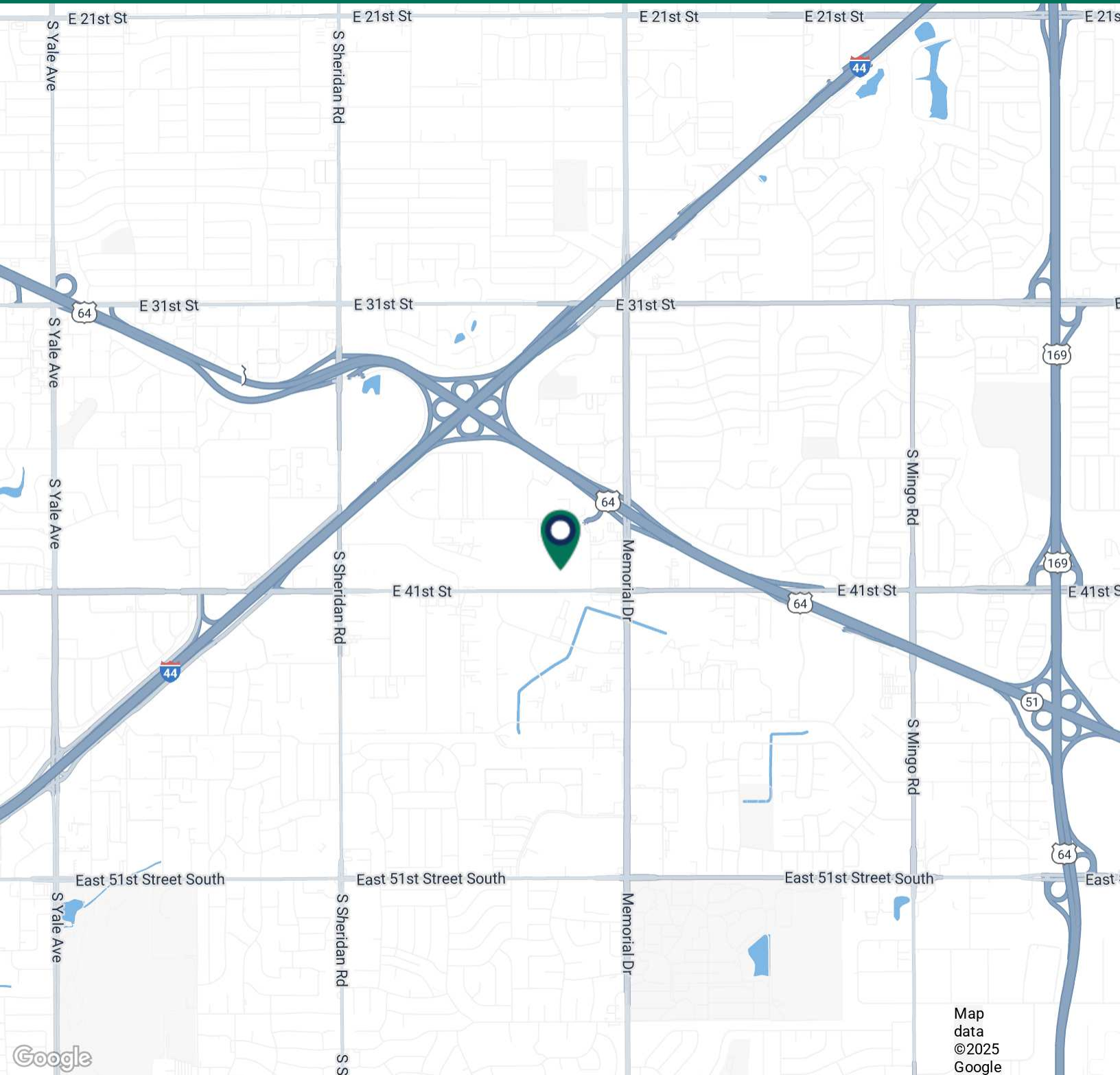
JOSH LOVE

jlove@pricedwards.com

O: 918.394.1000 C: 918.978.2428

7700 E 38TH ST

TULSA, OK 74145



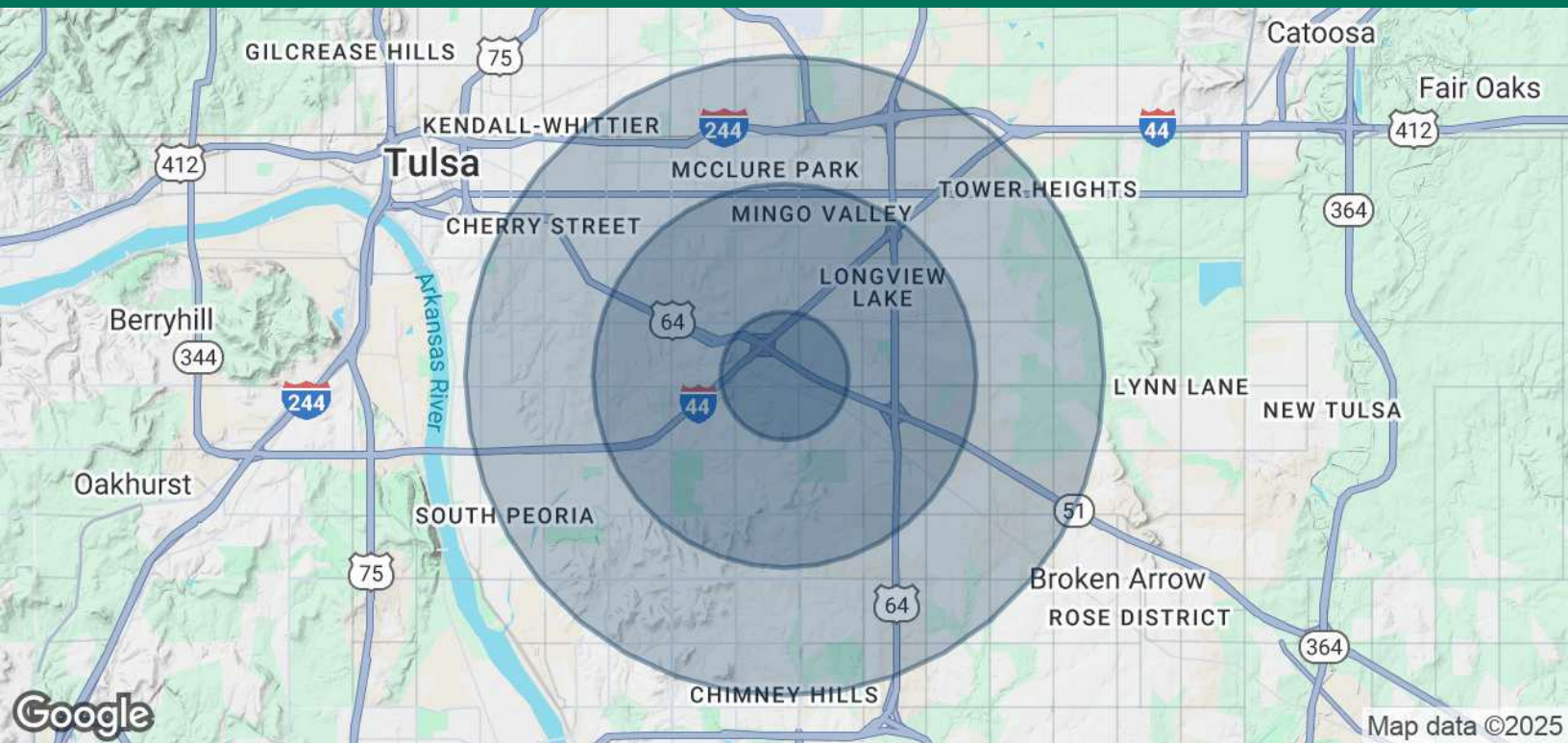
JOSH LOVE

jlove@priceedwards.com

O: 918.394.1000 C: 918.978.2428

7700 E 38TH ST

TULSA, OK 74145



POPULATION

	1 MILE	3 MILES	5 MILES
Total Population	7,143	94,015	262,612
Average Age	39	39	39
Average Age (Male)	37	38	38
Average Age (Female)	40	40	40

HOUSEHOLDS & INCOME

	1 MILE	3 MILES	5 MILES
Total Households	2,962	40,337	110,169
# of Persons per HH	2.4	2.3	2.4
Average HH Income	\$65,766	\$71,544	\$81,932
Average House Value	\$188,601	\$204,610	\$243,458

Demographics data derived from AlphaMap

JOSH LOVE

jlove@priceedwards.com

O: 918.394.1000 C: 918.978.2428