

21 Lewis Plaza

2424 East 21st Street, Tulsa, OK 74114



OFFICE SPACE NOW AVAILABLE

Contiguous SF Available:	3,662 SF
Available SF:	1,336 - 3,662
Lease Rate:	\$18.00/SF
Suite 300:	2,689 SF
Suite 440:	1,752 SF
Suite 500:	2,296 SF
Suite 540:	1,366 SF
Suite 500/540:	3,662 SF

PROPERTY OVERVIEW

FOR LEASE - 21 Lewis Plaza. Up to 3,662 RSF contiguous available.

- * On-Site bank
- * On-Site ownership
- * Common area break room
- * Loading dock
- * New chiller
- * Recent elevator remodel
- * LED lighting upgrade
- * Monument signage

LOCATION OVERVIEW

21 Lewis Plaza is located on the southeast corner of 21st Street and South Lewis Avenue with easy access to the Broken Arrow Expressway and Utica.

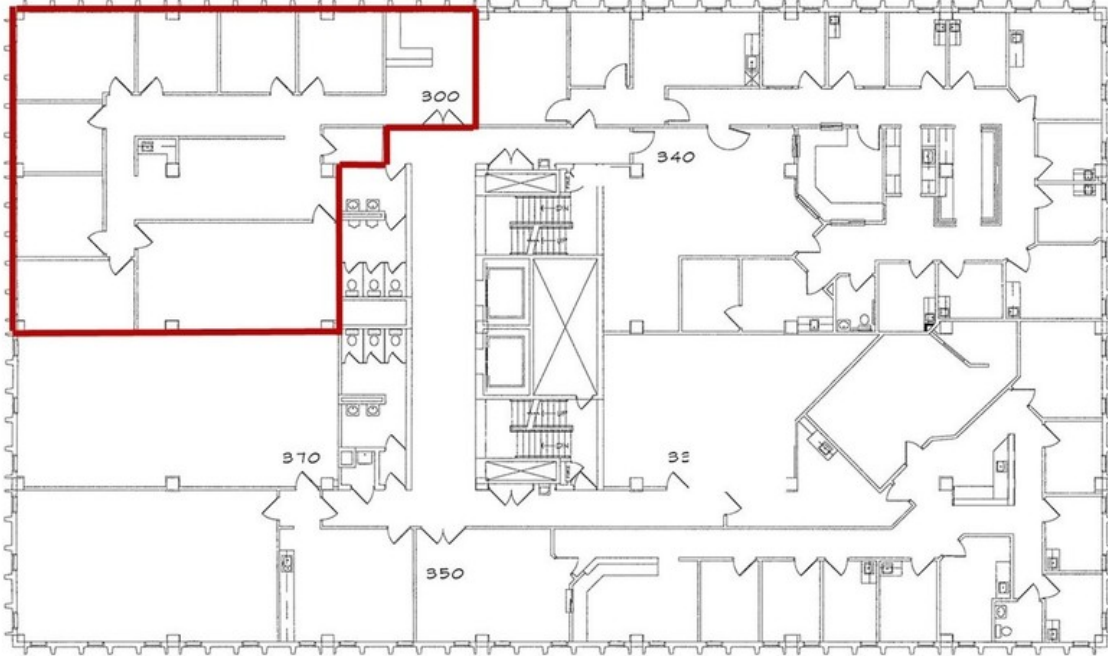
Its location near the campuses of St. John Hospital and Hillcrest Medical Center make it an ideal location for those wishing to be nearby.

Tenants at 21 Lewis Plaza also benefit from the Property's easy access to Utica Square. The Tulsa Central Business District is less than a 10 minute drive.

TANDA FRANCIS
918.394.1000
tfrancis@pricedwards.com
pricedwards.com

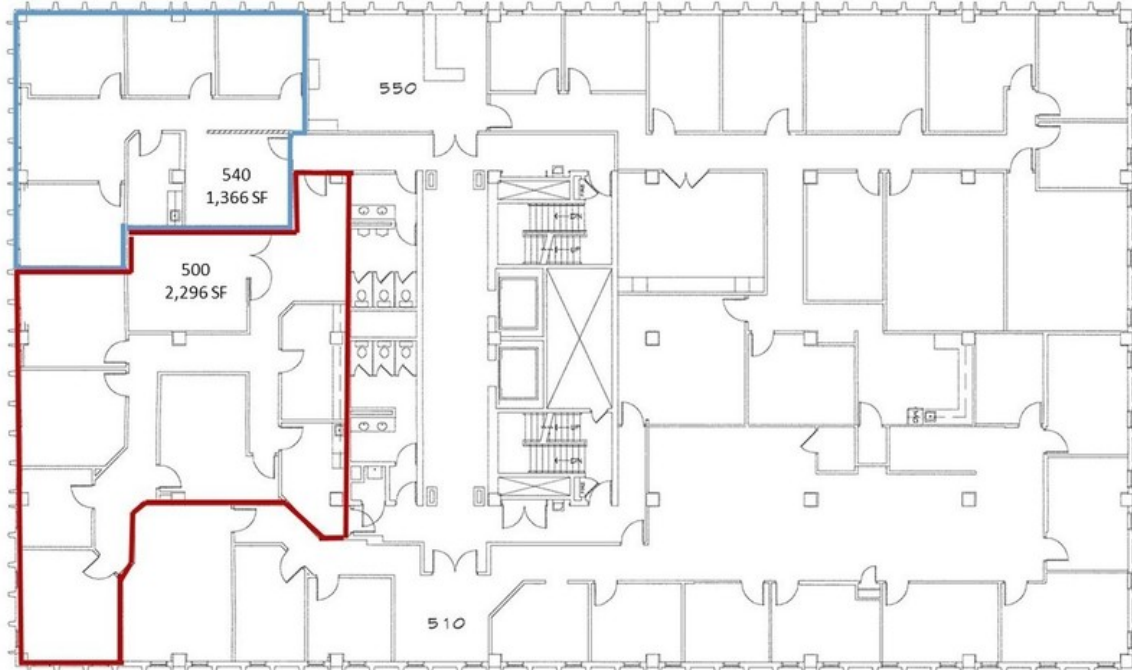
Suite 300 – 2,689 SF

3rd Floor



3,662 RSF Contiguous Available

5th Floor



TANDA FRANCIS
918.394.1000
tfrancis@priceedwards.com
priceedwards.com