

Lewis Park - For Lease

5319 South Lewis Avenue, Tulsa, OK 74105



FOR LEASE

Available SF:	1,300 SF
Rent Rate:	\$14.25 PSF
Building Size:	17,803 SF
Year Built:	1985
Zoning:	OL

PROPERTY OVERVIEW

Lewis Park is a garden office building with curbside parking that offers tenants a professional work environment in the South Lewis Corridor.

- * Monument signage.
- * Key card for after-hours access.
- * On-site ownership and management.

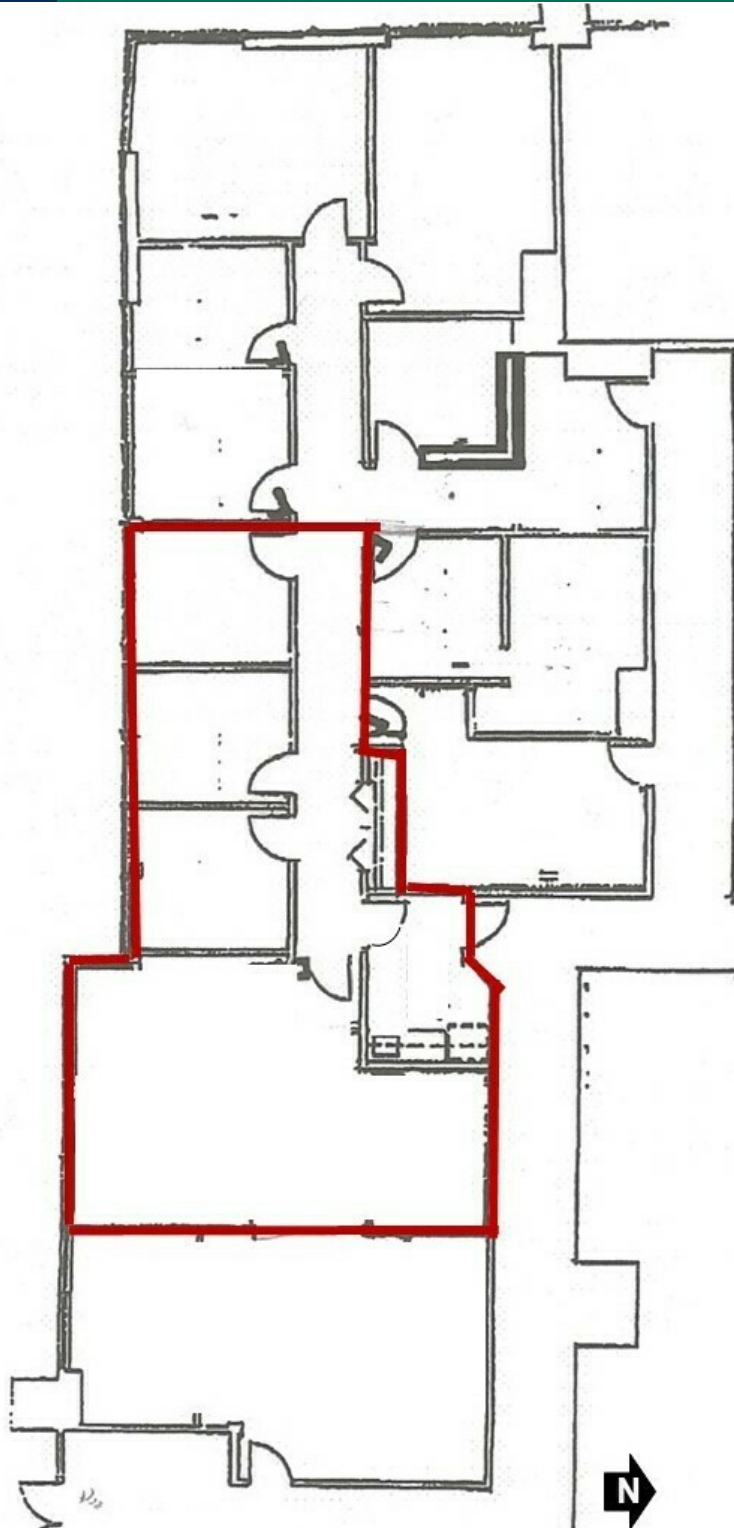
LOCATION OVERVIEW

Lewis Park is centrally located on South Lewis Avenue just south of East 51st Street in the South Lewis Corridor which features Southern Hills Country Club. It has a great location close to Tulsa's highway system with easy access and close proximity to Interstate 44.

TANDA FRANCIS
918.394.1000
tfrancis@priceedwards.com
priceedwards.com

Lewis Park - For Lease

Suite 218 - 1,300 SF



TANDA FRANCIS
918.394.1000
tfrancis@priceedwards.com
priceedwards.com