



OFFICE SPACE FOR LEASE

Available SF:	29,325 - 366,345 SF
Mod 1.1:	65,369 SF
Mod 1.2:	65,282 SF
Mod 3.1:	78,200 SF
Mod 3.2:	67,794 SF
Mod 4.1:	29,325 SF
Mod 4.2:	60,375 SF

PROPERTY OVERVIEW

FOR LEASE - Up to 366,345 SF available. Excellent location for Corporate Headquarters or Call Center.

Mod 1: 130,651 SF Contiguous
 Mod 3: 145,994 SF Contiguous
 Mod 4: 89,700 SF Contiguous

- * Common Conference Rooms
- * 24/7 Maintenance Staff
- * 24/7 On-Site Security
- * Outdoor Exercise Trail
- * Loading Dock

LOCATION OVERVIEW

Verizon Cherokee Campus is located on the northeast corner of 66th Street North and Lakewood Avenue with easy access to Highway 75 and Highway 169. The Campus is located 10 minutes from Tulsa's International Airport and near Macy's 1.3 million square foot fulfillment center.

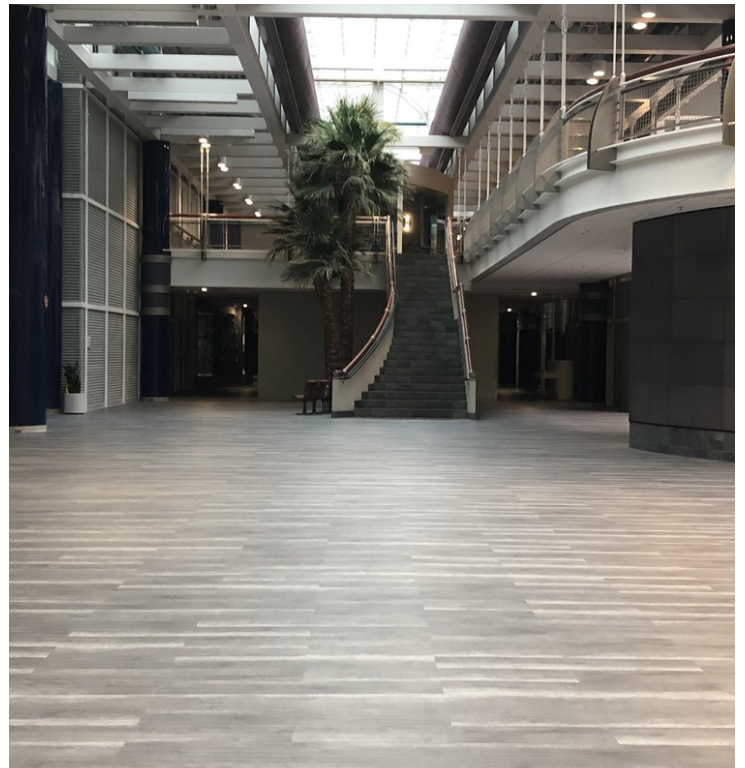
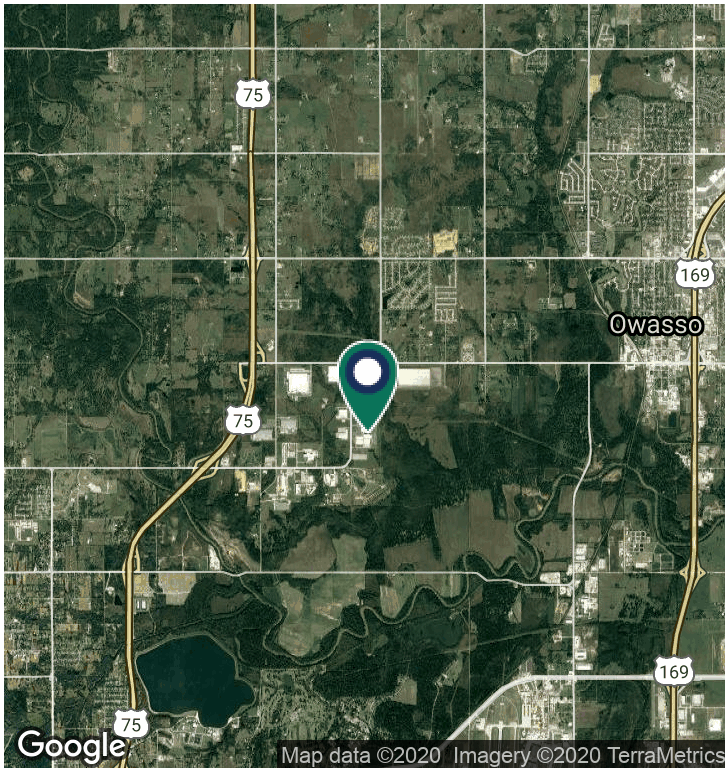
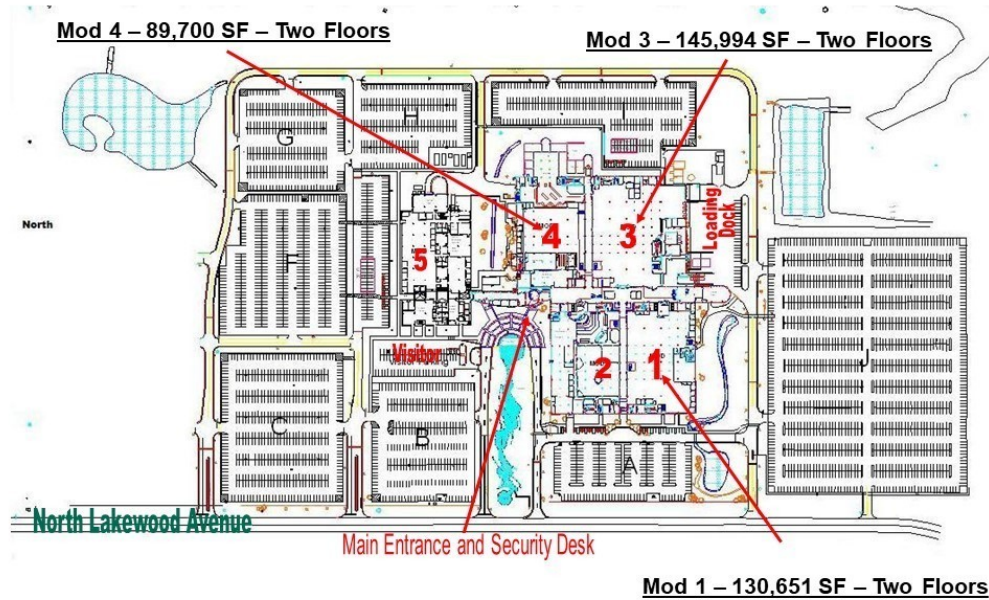
TANDA FRANCIS
 918.394.1000
 tfrancis@pricedwards.com
 pricedwards.com

Verizon Cherokee Campus

6929 North Lakewood Avenue, Tulsa, OK 74117

Verizon Cherokee Campus
6929 North Lakewood Avenue

Office / Call Center Space for Lease
30,000 sf to 366,345 sf available



TANDA FRANCIS
918.394.1000
tfrancis@priceedwards.com
priceedwards.com