

PRIME RETAIL SPACE ADJACENT TO KOHL'S

Moore, OK 73160 | 2600 S Telephone Rd | Telephone Rd & SW 25th St | #490



- 23,200 +/- sf space available adjacent to Kohl's.
- Located off S Telephone, close to Interstate 35 and across from Walmart Supercenter

DEMOGRAPHICS

	1 MILE	3 MILES	5 MILES
2018 POPULATION	8,631	72,561	125,914
2018 AVERAGE HH INCOME	\$ 77,032	\$ 76,313	\$ 82,894
2018 MEDIAN HH INCOME	\$ 61,905	\$ 63,203	\$ 66,827

TRAFFIC COUNTS

S Telephone Rd	north	12,895 VPD
S Telephone Rd	south	9,009 VPD
Interstate 35	north/south	114,400 VPD
SW 19th St	east	31,511 VPD
SW 19th St	west	30,475 VPD

AVAILABLE SF:

23,200 SF

FRONTAGE:

APPROXIMATELY 90'8"

ZONING:

COMMERCIAL

RATES:

CALL FOR DETAILS

AREA ANCHORS

KOHL'S

LOWE'S
Home Improvement Warehouse

WAL-MART®
SUPERCENTER

EVERY SEASON STARTS AT
DICK'S
SPORTING GOODS

JCPenney

THE HOME DEPOT

at home
The Home Décor Superstore

SuperTARGET

PRICE
EDWARDS
AND COMPANY

FOR MORE INFORMATION, CONTACT EXCLUSIVE ASSOCIATE:

KARLEEN KRYWUCKI . kkrywucki@pricedwards.com . 405.239.1243

Stan Johnson Co.
THE NET LEASE AUTHORITY®

CHAINLINKS
RETAIL ADVISORS

Demographics ESRI 2018 No warranty expressed or implied has been made as to the accuracy of the information provided herein, no liability assumed for error or omissions.

PRIME RETAIL SPACE ADJACENT TO KOHL'S

Moore, OK 73160 | 2600 S Telephone Rd | Telephone Rd & SW 25th St | #490



**PRICE
EDWARDS**
AND COMPANY

FOR MORE INFORMATION, CONTACT EXCLUSIVE ASSOCIATE:
KARLEEN KRYWUCKI . kkrywucki@pricedwards.com . 405.239.1243

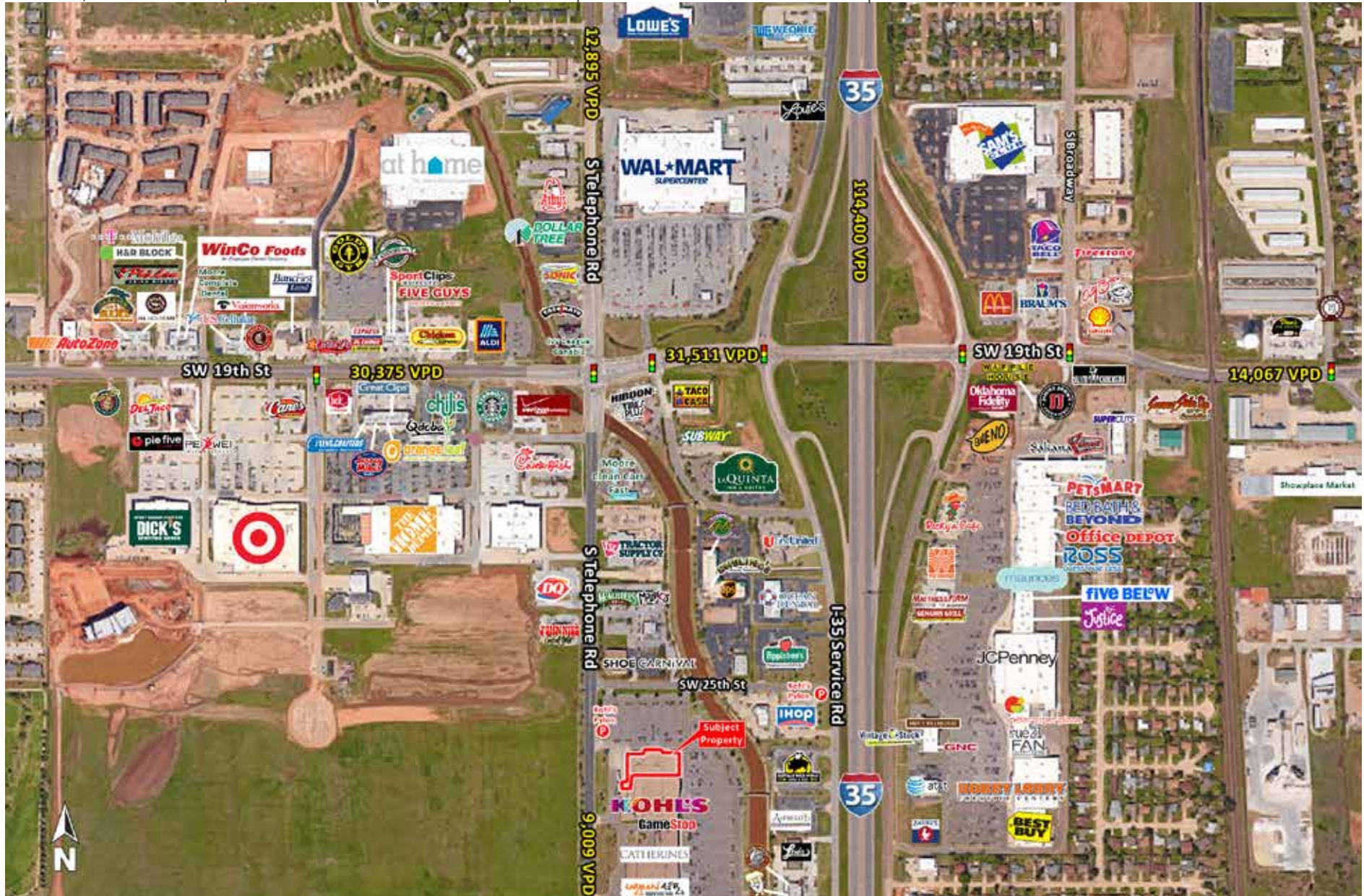
Stan Johnson Co.
THE NET LEASE AUTHORITY®

CHAINLINKS
RETAIL ADVISORS

Demographics ESRI 2018 No warranty expressed or implied has been made as to the accuracy of the information provided herein, no liability assumed for error or omissions.

PRIME RETAIL SPACE ADJACENT TO KOHL'S

Moore, OK 73160 | 2600 S Telephone Rd | Telephone Rd & SW 25th St | #490



**PRICE
EDWARDS**
AND COMPANY

FOR MORE INFORMATION, CONTACT EXCLUSIVE ASSOCIATE:
KARLEEN KRYWUCKI . kkrywucki@pricedwards.com . 405.239.1243

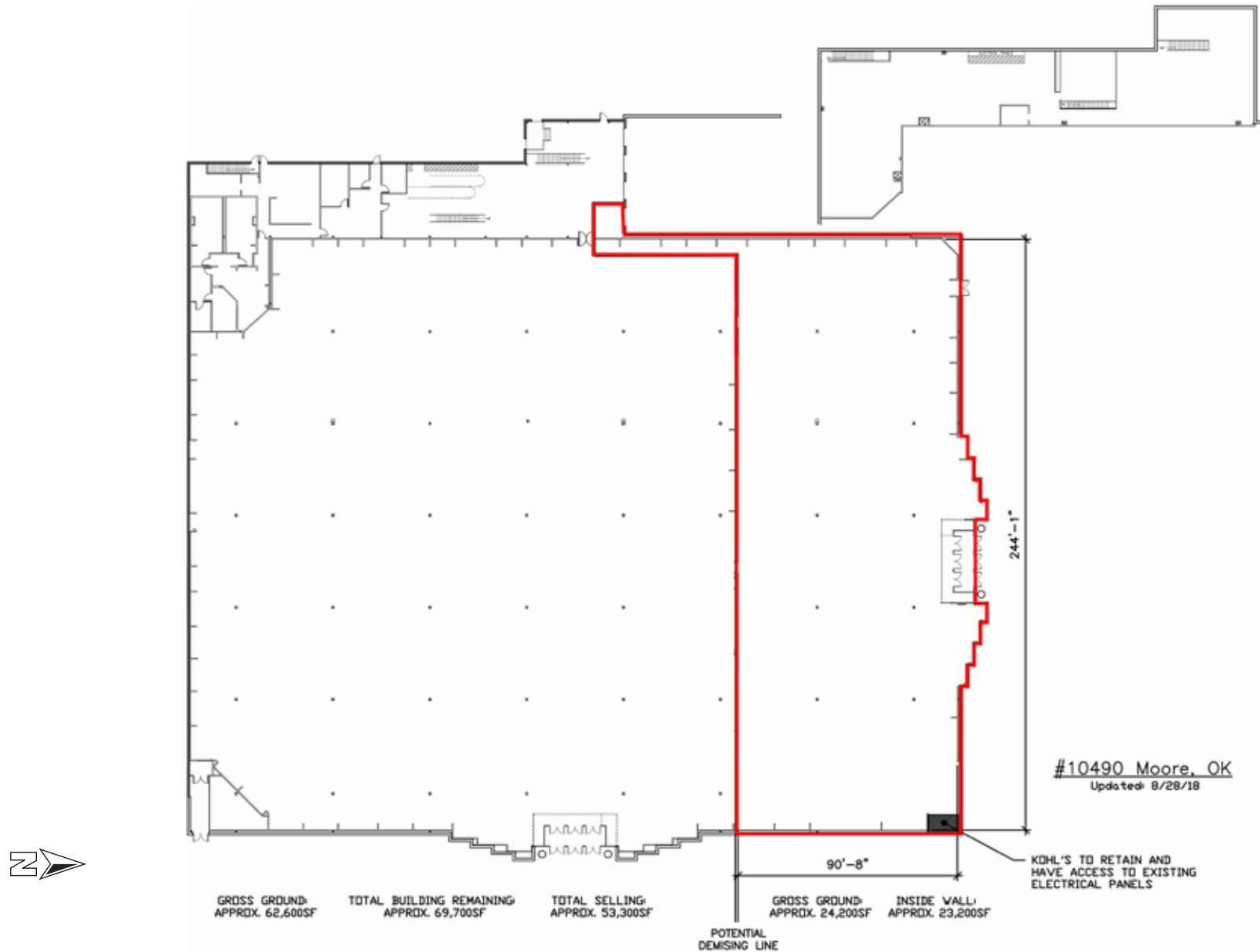
Stan Johnson Co.
THE NET LEASE AUTHORITY®

CHAINLINKS
RETAIL ADVISORS

Demographics ESRI 2018 No warranty expressed or implied has been made as to the accuracy of the information provided herein, no liability assumed for error or omissions.

PRIME RETAIL SPACE ADJACENT TO KOHL'S

Moore, OK 73160 | 2600 S Telephone Rd | Telephone Rd & SW 25th St | #490



**PRICE
EDWARDS**
AND COMPANY

FOR MORE INFORMATION, CONTACT EXCLUSIVE ASSOCIATE:
KARLEEN KRYWUCKI . kkrywucki@pricedwards.com . 405.239.1243

Stan Johnson Co.
THE NET LEASE AUTHORITY®

CHAINLINKS
RETAIL ADVISORS

Demographics ESRI 2018 No warranty expressed or implied has been made as to the accuracy of the information provided herein, no liability assumed for error or omissions.