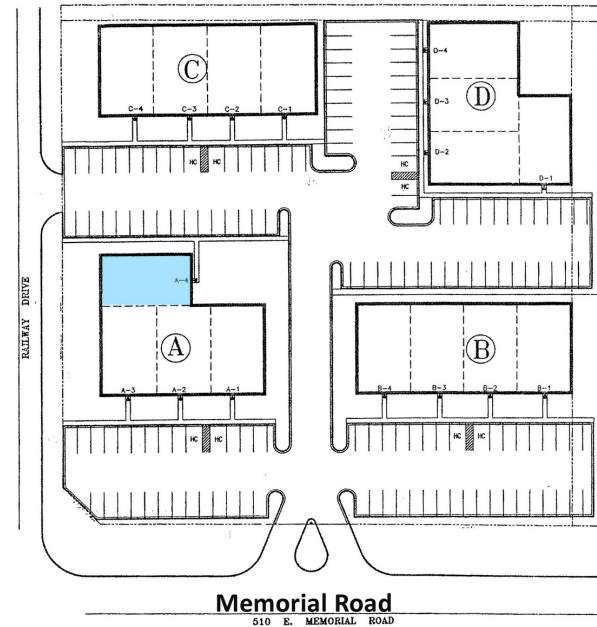


MEMORIAL OFFICE PARK

OFFICE FOR LEASE - SUITE A-4 - BUILDING A



510 East Memorial Road, OKC, OK 73114



Memorial Office Park
OKLAHOMA CITY, OKLAHOMA

LEASE OVERVIEW

Available SF: 2,075 SF

Lease Rate: Suite A-4: \$1,950 per month
Tenant pays utilities, janitorial
+ \$50 per month for common
area maintenance

LOCATION OVERVIEW

1/2 mile west of Broadway Extension

PROPERTY OVERVIEW

- Tenant pays utilities direct to provider plus tenants share water/sewer/trash
- This beautiful garden office property consists of 4 buildings totaling about 32,000 SF
- New Roofs
- Abundant parking adjacent to the office
- Restaurants within walking distance
- Tenant controls heat & air conditioning

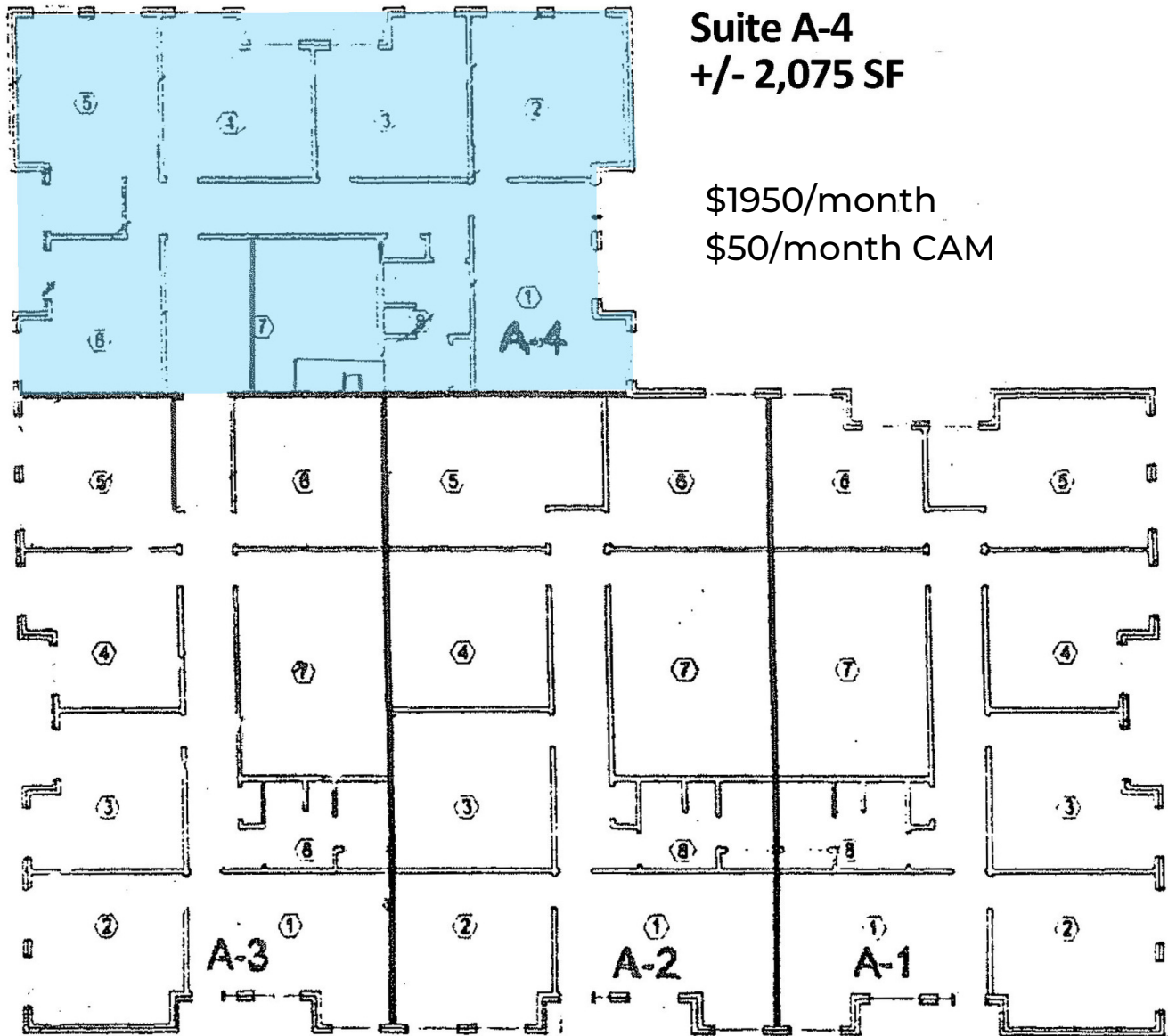


TOM FIELDS

405.239.1205

tfields@priceedwards.com

OFFICE SPACE FOR LEASE - MEMORIAL OFFICE PARK



Suite A-4
+/- 2,075 SF

\$1950/month
\$50/month CAM

BUILDING A



PRICE EDWARDS AND CO.