

MAXIM CENTER

FOR LEASE

4717-4733 S Memorial Drive, Tulsa, OK 74145



Details

Lease Rate:	\$8 - 8.50 SF/yr (NNN)
Available SF:	2,834 - 10,555 SF
Building Size:	40,800 SF

Highlights

- 2,834± - 10,555± SF Available
- Memorial Drive Frontage
- Fully Sprinklered
- Grade Level and Dock High Doors
- Zoned IL
- Monument Signage
- Exterior Signage for Each Suite

Overview

Maxim Center is a 40,800± SF retail, office and flex industrial facility centrally located with excellent Memorial Drive exposure and access to Highway 51/Broken Arrow Expressway. Tenants enjoy nicely landscaped, private entrances with the opportunity for exterior signage and front door parking. Loading access and office configuration vary by suite.

Josh Love

jlove@priceedwards.com
918.394.1000

Christian Funk

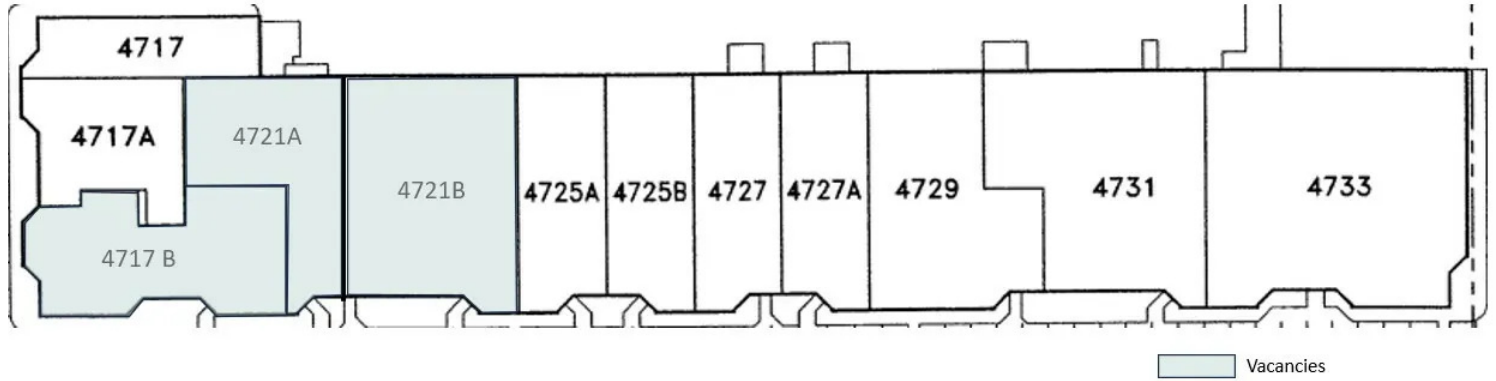
cfunk@priceedwards.com
559.307.9833

**PRICE
EDWARDS**
AND COMPANY

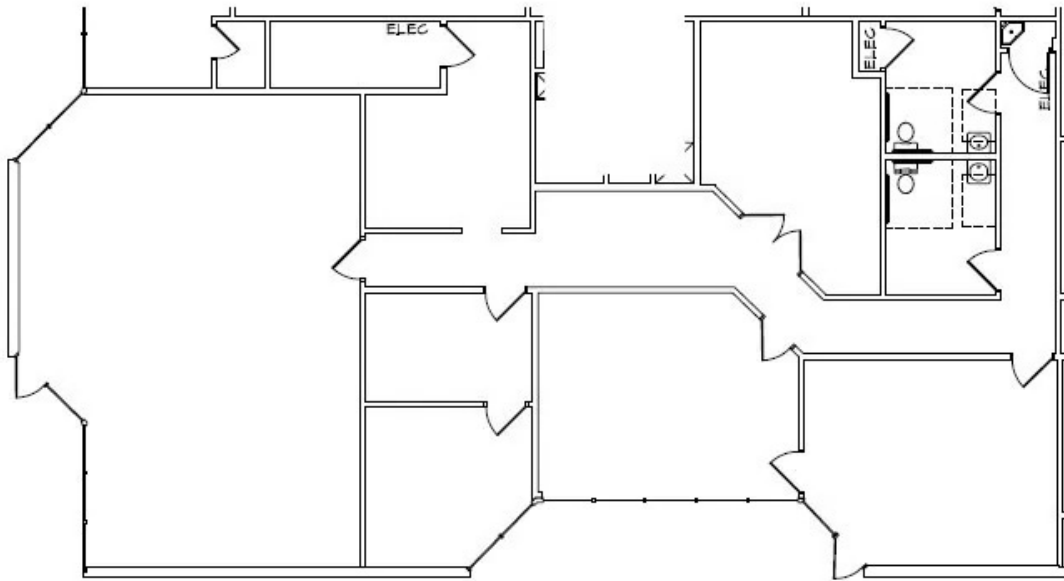
MAXIM CENTER

FOR LEASE

4717-4733 S Memorial Drive, Tulsa, OK 74145



Site Plan



4717-B

Josh Love

jlove@priceedwards.com
918.394.1000

Christian Funk

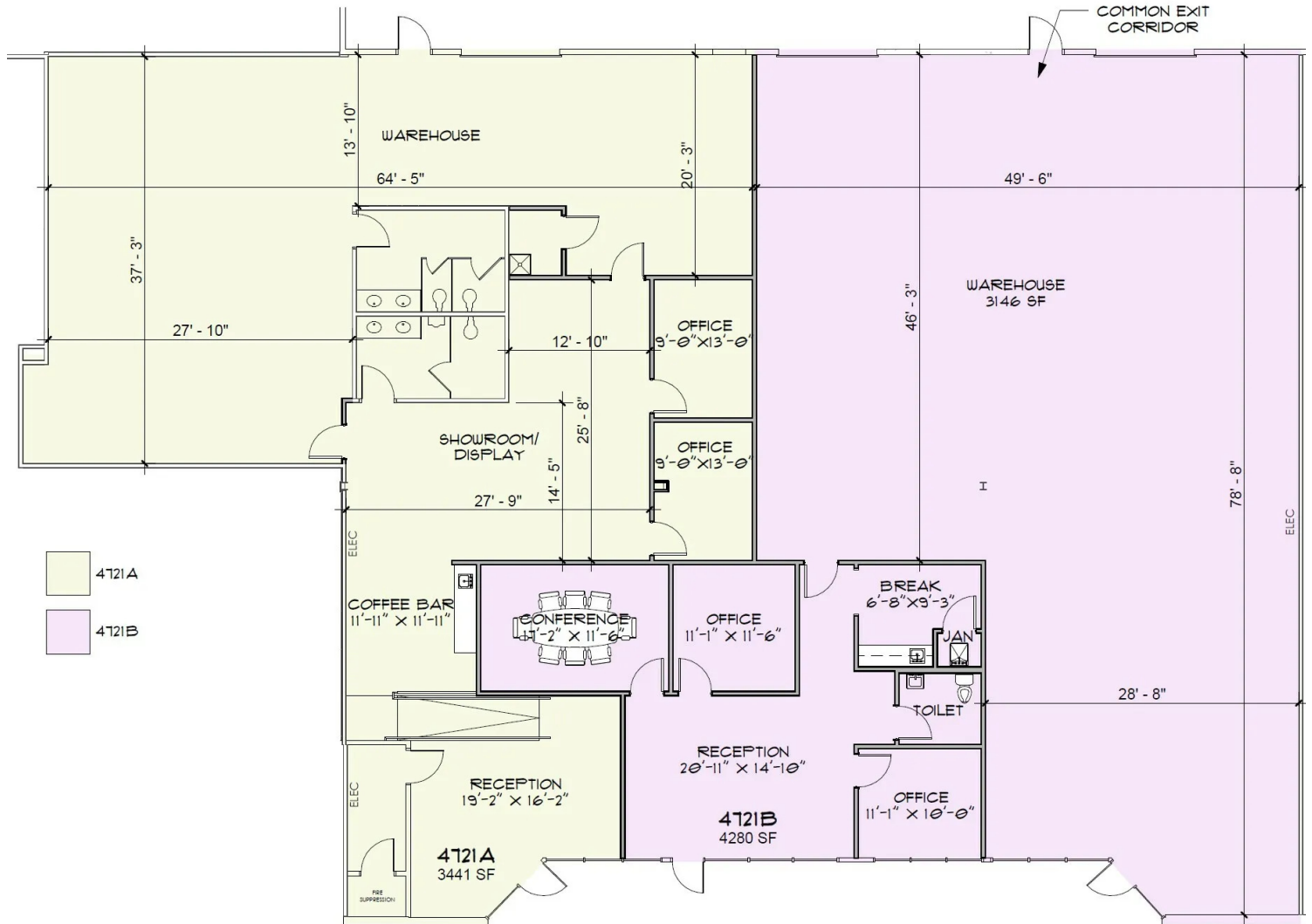
cfunk@priceedwards.com
559.307.9833

**PRICE
EDWARDS**
AND COMPANY

MAXIM CENTER

4717-4733 S Memorial Drive, Tulsa, OK 74145

FOR LEASE



4721 A & B

Josh Love
jlove@priceedwards.com
918.394.1000

Christian Funk
cfunk@priceedwards.com
559.307.9833

PRICE EDWARDS
AND COMPANY

MAXIM CENTER

4717-4733 S Memorial Drive, Tulsa, OK 74145

FOR LEASE



Josh Love
jlove@priceedwards.com
918.394.1000

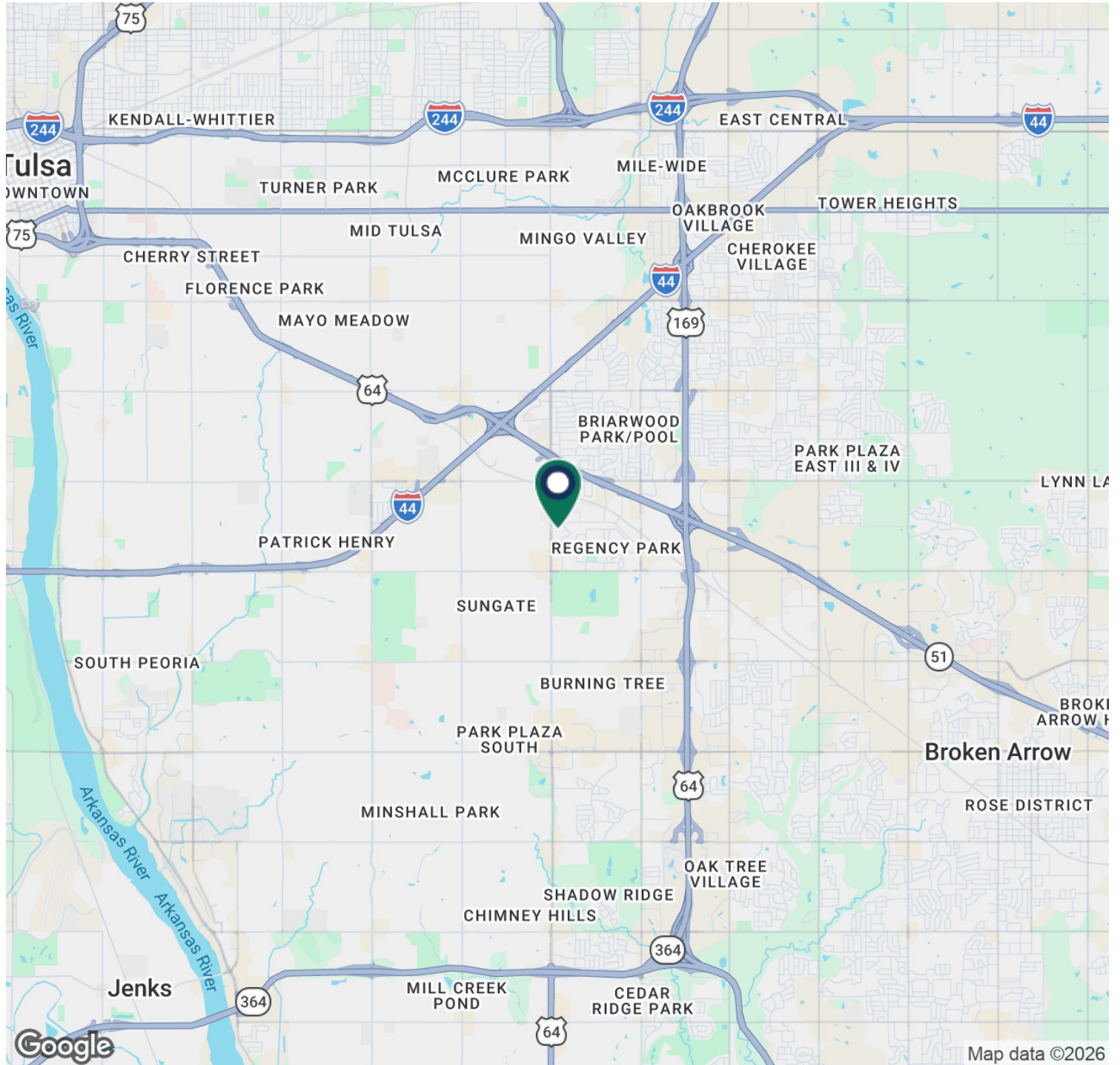
Christian Funk
cfunk@priceedwards.com
559.307.9833

**PRICE
EDWARDS**
AND COMPANY

MAXIM CENTER

FOR LEASE

4717-4733 S Memorial Drive, Tulsa, OK 74145

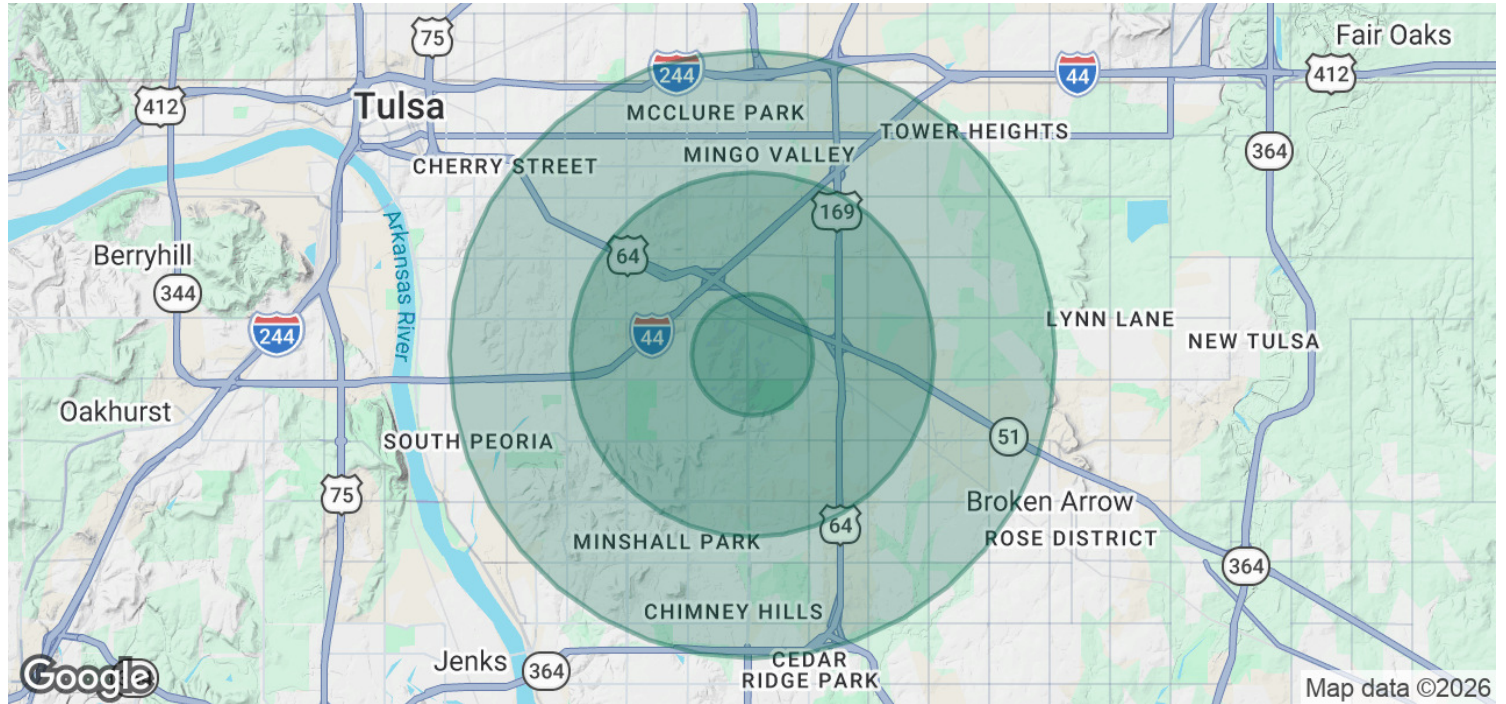


Josh Love
jlove@priceedwards.com
918.394.1000

Christian Funk
cfunk@priceedwards.com
559.307.9833

PRICE EDWARDS
AND COMPANY

4717-4733 S Memorial Drive, Tulsa, OK 74145



POPULATION	1 MILE	3 MILES	5 MILES
Total Population	8,804	94,562	252,487
Average Age	33.5	36.7	37.3
Average Age (Male)	31.4	35.0	36.3
Average Age (Female)	36.3	38.7	38.6
HOUSEHOLDS & INCOME	1 MILE	3 MILES	5 MILES
Total Households	3,756	40,397	105,366
# of Persons per HH	2.3	2.3	2.4
Average HH Income	\$65,158	\$75,179	\$95,356
Average House Value	\$164,222	\$194,762	\$253,098

2023 American Community Survey (ACS)

Josh Love
 jlove@priceedwards.com
 918.394.1000

Christian Funk
 cfunk@priceedwards.com
 559.307.9833

PRICE EDWARDS
 AND COMPANY