

Plaza Court

1100 N Classen Drive, Oklahoma City, OK 73106



OFFERING SUMMARY

Available SF:	3,454 SF
	\$19.00 SF/yr (NNN)
NNN Charges:	\$4.00 SF/yr
Building Size:	38,501 SF
Building Class:	B
Year Built:	1927
Renovated:	2007
Market:	CBD
Submarket:	Midtown

PROPERTY OVERVIEW

Three to five year agreement, triple net lease with pro-rata share of building electric and janitorial. A large number of on-street parking is available with free surface a parking for employees across the street to the east .

LOCATION OVERVIEW

Midtown is a lively, walkable district north of downtown Oklahoma City. Along with creative, hip office spaces, the area is home to a diverse mix of award winning restaurants, gastropubs, micro-breweries, rat-pack style cocktail lounges, a german style beer garden, and numerous independent shops. In the Plaza Court Building, along with a beautiful office, you will find a full services YMCA, McNellies Irish Pub, a yoga studio and an optical shop. With streetcar stops a block away, the Ambassador Hotel to the east and numerous apartment complexes in the immediate area make this area an ideal location to live, work and play.

C. DEREK JAMES
405.239.1206
djames@priceedwards.com
priceedwards.com

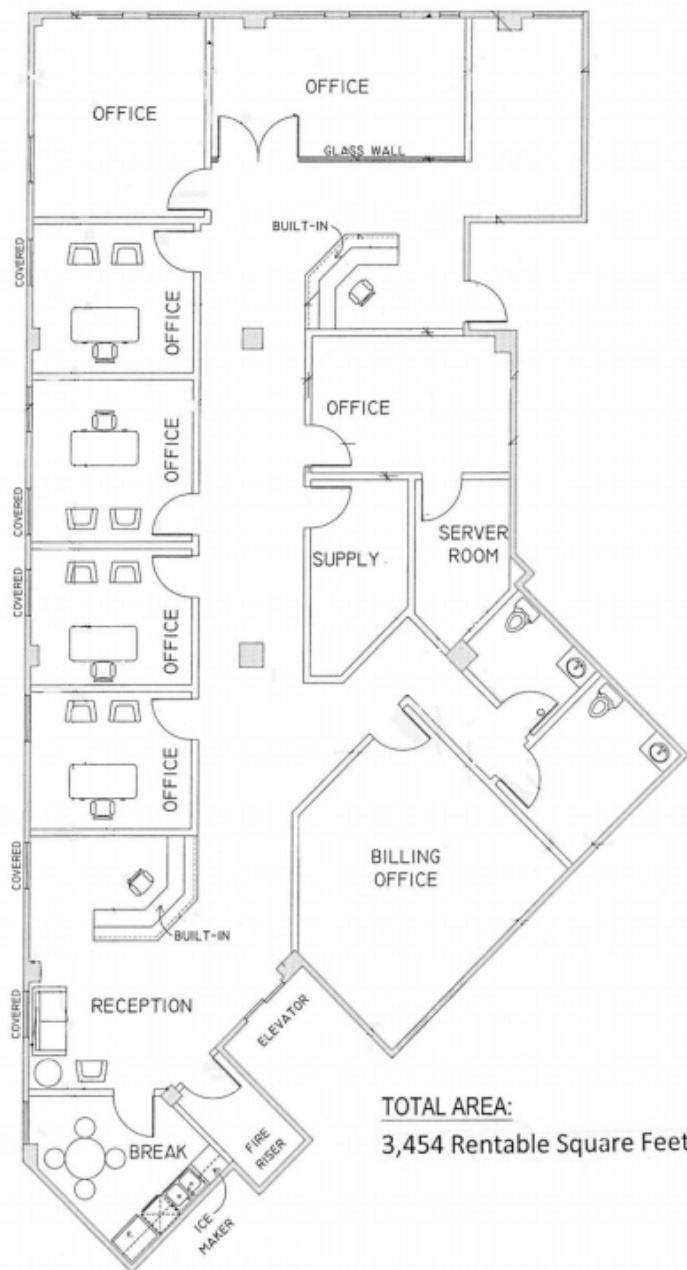
Plaza Court

1100 N Classen Drive, Oklahoma City, OK 73106



C. DEREK JAMES
405.239.1206
djames@priceedwards.com
priceedwards.com

The information contained herein is from sources deemed reliable. No representation is made to the accuracy herein. Photos herein are the property of their respective owners, and use of them without express written consent of the owner is prohibited.



TOTAL AREA:

3,454 Rentable Square Feet