

NEW OFFICE SPACE FOR LEASE

13601 N MAY AVE., OKLAHOMA CITY, OK 73120

OFFICES AT QUAIL SPRINGS



OFFERING SUMMARY

Total Building SF: 91,027 SF

Office SF: 12,644 SF

Office Lease Rate: \$21 / SF
With \$0.50 / SF
annual increases

Lease Type: Full Service

Market: North Oklahoma
City

Submarket: Memorial Corridor

PROPERTY OVERVIEW

Offices at Quail Springs is a 91,000 square foot, two story, mixed use office/retail center located at May and Kilpatrick Turnpike; one of the busiest intersections in the corridor.

- PROMINANT SIGNAGE AVAILABLE ON THE BUILDING

LOCATION OVERVIEW & DESCRIPTION

The Memorial Corridor is a magnet for corporate business, containing over 1.5 million square feet of office space, with over half being Class A properties. The businesses in the corridor are supported by over 1,200 hotel rooms and suites.

For more information please contact:

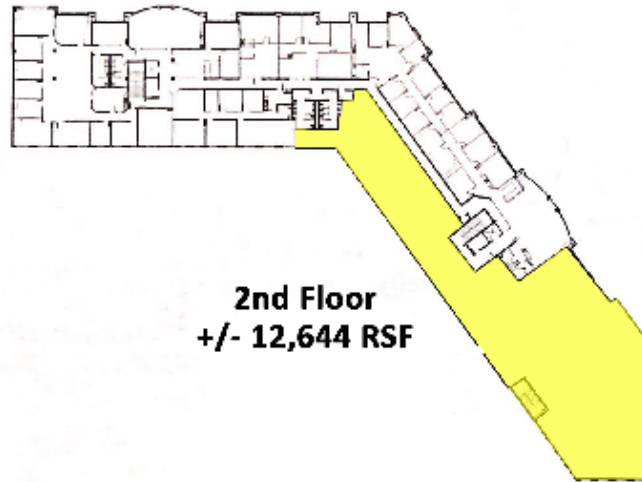
TOM FIELDS
tfields@priceedwards.com
405.239.1205

CRAIG TUCKER
ctucker@priceedwards.com
405.843.7474

OFFICE SPACE FOR LEASE

13601 N. MAY AVE., OKLAHOMA CITY, OK 73120

OFFICES AT QUAIL SPRINGS



For more information please contact:

TOM FIELDS

tfields@priceedwards.com
405.239.1205

CRAIG TUCKER

ctucker@priceedwards.com
405.843.7474