

One Corporate Plaza

3525 NW 56th Street, Oklahoma City, OK 73112



Lease Rate	\$16.50 SF/YR
Bldg Size	63,000 SF

LOCATION OVERVIEW

Between Integris and Deaconess Hospitals on NW 56th Street. Proximity to I-44 provides access to all areas of Oklahoma City.

AVAILABLE SPACES

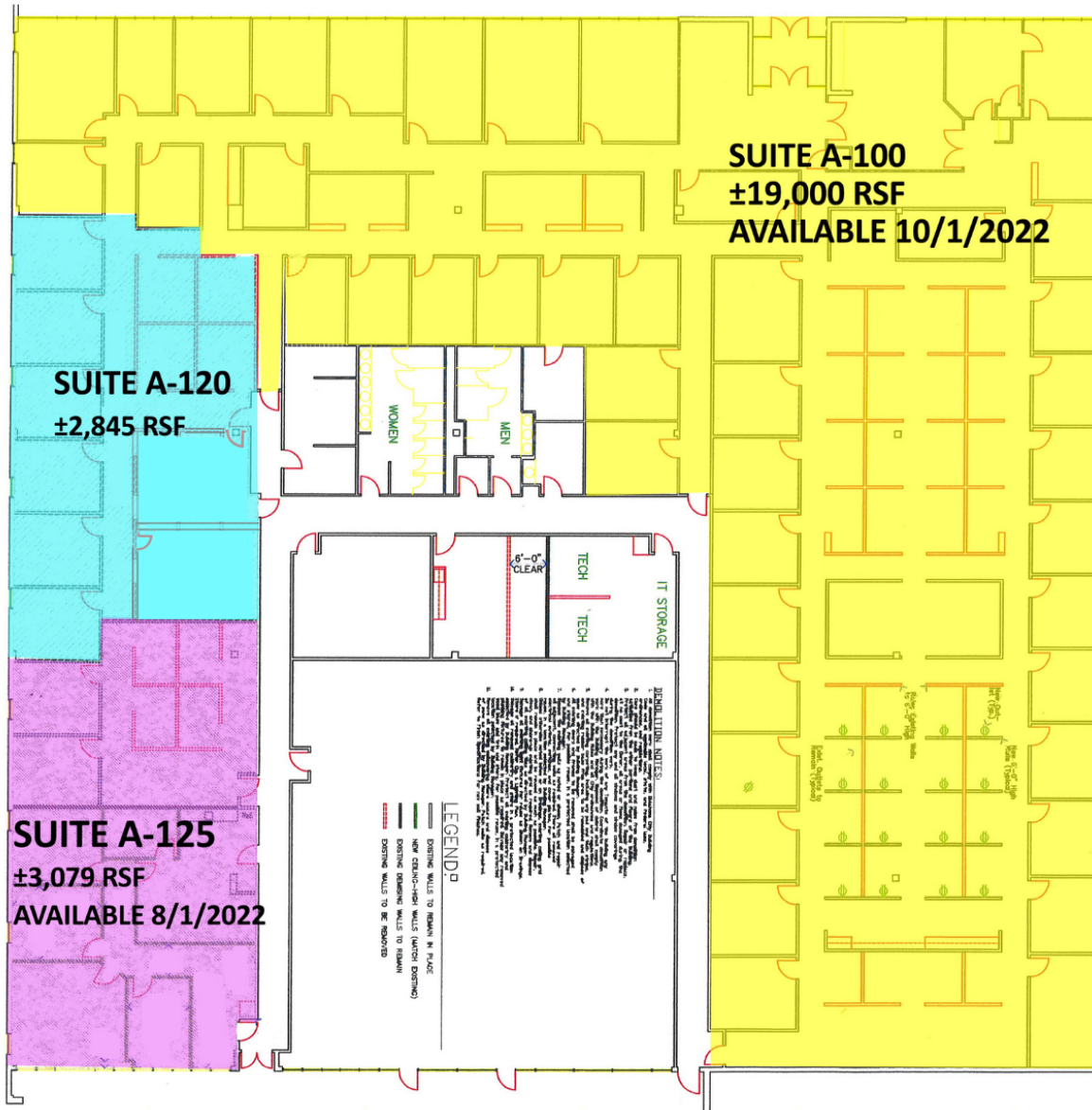
19,000 RSF	(available 10/01/22)
2,845 RSF	
3,079 RSF	(available 08/01/22)


PROPERTY HIGHLIGHTS

- Includes normal utilities, maintenance and janitorial
- On-site maintenance
- Floor to ceiling glass
- Approximately 315 parking spaces provides one of the highest parking ratios of any Oklahoma City office building (5/1000 SF)

TOM FIELDS
405.239.1205
tfields@priceedwards.com
priceedwards.com

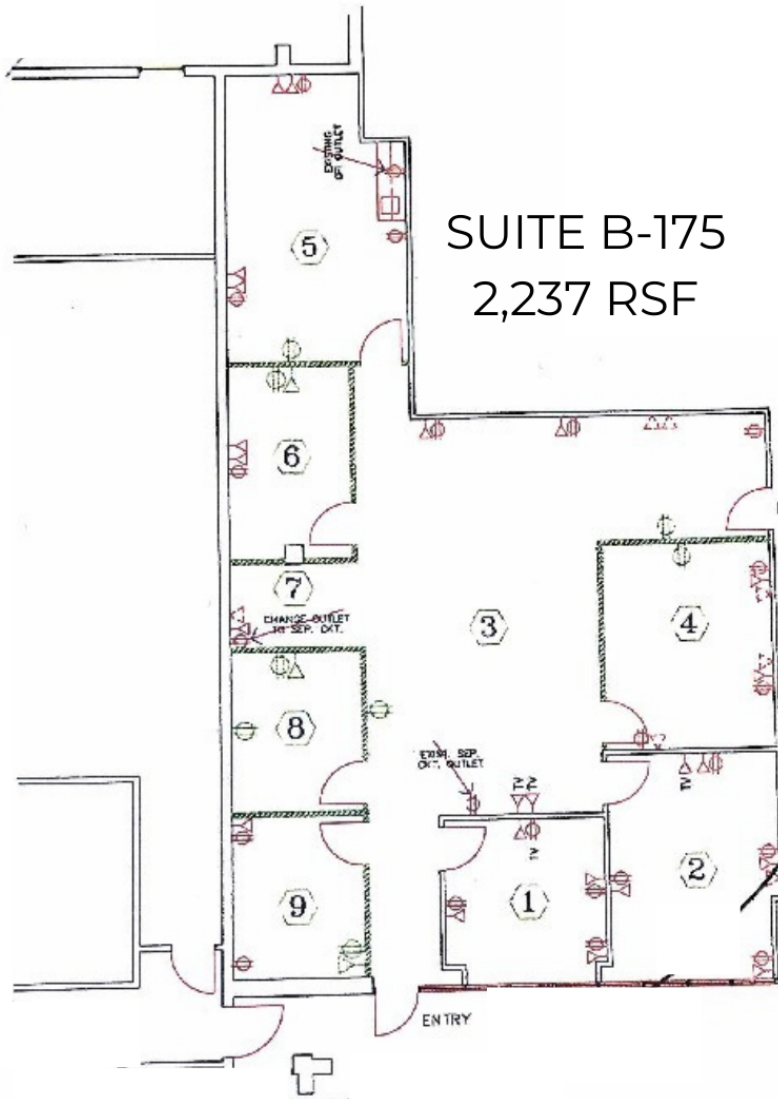
CRAIG TUCKER
405.843.7474
ctucker@priceedwards.com
priceedwards.com



 FLOOR PLAN: POD "A"

TOM FIELDS
405.239.1205
tfields@priceedwards.com
priceedwards.com

CRAIG TUCKER
405.843.7474
ctucker@priceedwards.com
priceedwards.com



TOM FIELDS
405.239.1205
tfields@priceedwards.com
priceedwards.com

CRAIG TUCKER
405.843.7474
ctucker@priceedwards.com
priceedwards.com