

OKLAHOMA TOWER

210 PARK AVENUE, OKLAHOMA CITY, OK 73118



PROPERTY DESCRIPTION

31-story Class A office tower
27th floor sublease availability

Parking

5 spaces are available in the adjacent City Center East Garage

Security

- Staffed after-hours and on-site personnel 24/7.
- Card reader Access for all tenants.
- Video surveillance

Amenities

- Conference Center
- On-site banking
- On-site salon
- 2 on-site restaurants
- Access to The Underground

LOCATION DESCRIPTION

Located in the heart of the Central Business District on Park Avenue. ½ block from streetcar service.

OFFERING SUMMARY

For Sublease & Immediate occupancy

Suite 2750: ±5,921 RSF

Lease Rate: \$17.00 SF/yr Full Service

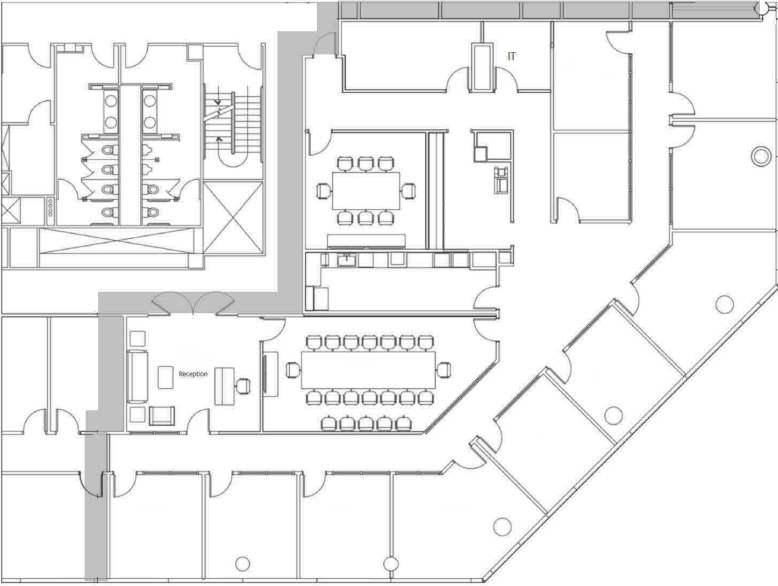
**Primary lease expires
October 31, 2027**

CRAIG TUCKER

ctucker@priceedwards.com
O: 405.239.1202 C: 405.641.3218

OKLAHOMA TOWER

210 PARK AVENUE, OKLAHOMA CITY, OK 73118



CRAIG TUCKER

ctucker@priceedwards.com

O: 405.239.1202 C: 405.641.3218