

PLAZA COURT BUILDING - 2ND FLOOR

1100 N CLASSEN DRIVE OKLAHOMA CITY, OK 73103



PROPERTY DESCRIPTION

New office suites are under construction in the 2nd floor of the Midtown Plaza Court Building. Suites feature an updated lobby with elevator, parking, and modern finishes. Floor plans shown are proposed floor plans, which can be customized to each tenant to meet their requirements for open floor plan and private offices.

Renderings by Fitzsimmons Architects include proposed finishes and an upstairs lobby mural.

PROPERTY HIGHLIGHTS

- Midtown amenities - this location is in the center of Midtown's restaurants and services
- Move-in ready suites
- New, modern finishes
- Iconic location with easy highway access

ALLISON BARTA BAILEY

abailey@priceedwards.com

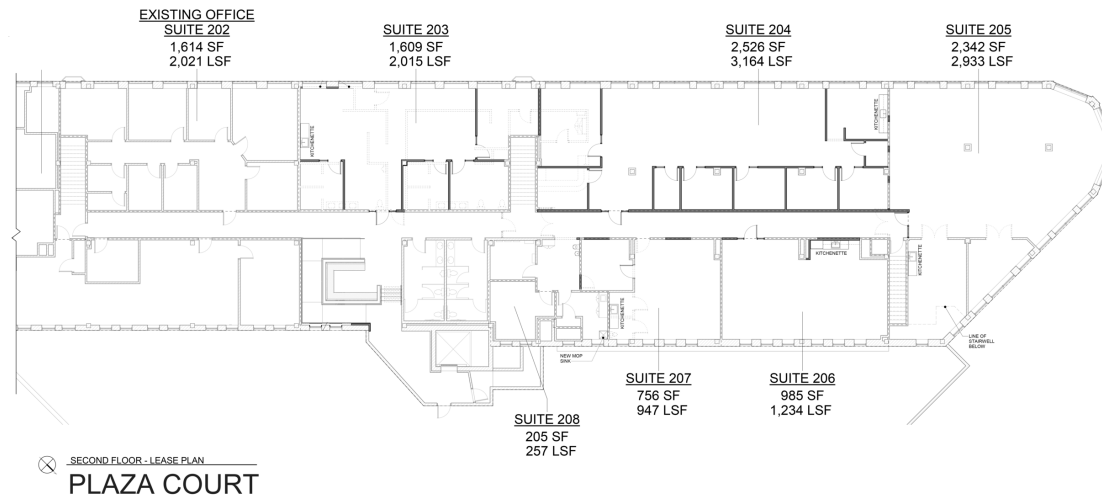
O: 405.239.1245 C: 405.620.3883

OFFERING SUMMARY

Lease Rate:	\$29.00 SF/yr (NNN)
Number of Units:	6
Available SF:	257 - 8,112 SF

PLAZA COURT BUILDING - 2ND FLOOR

1100 N CLASSEN DRIVE OKLAHOMA CITY, OK 73103



AVAILABLE SPACES

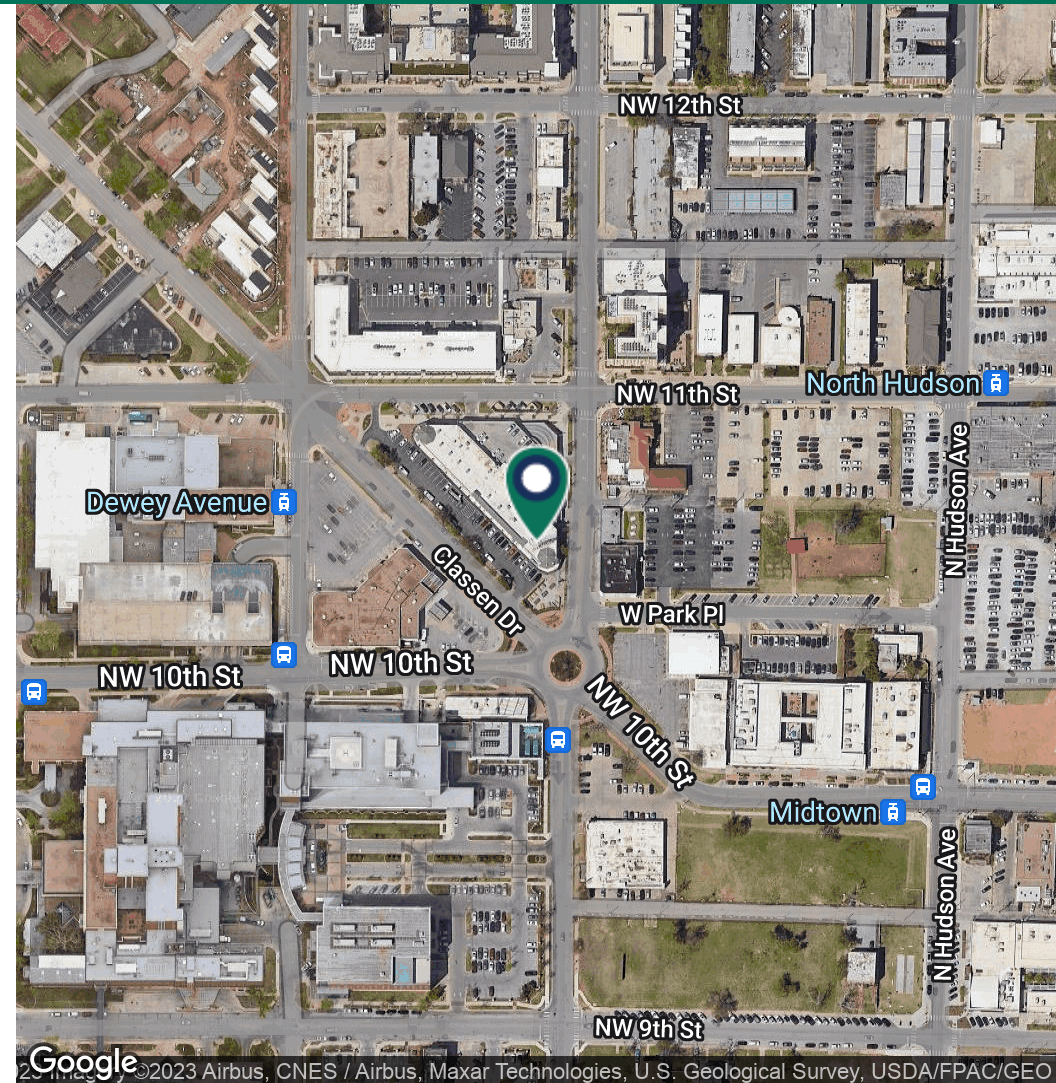
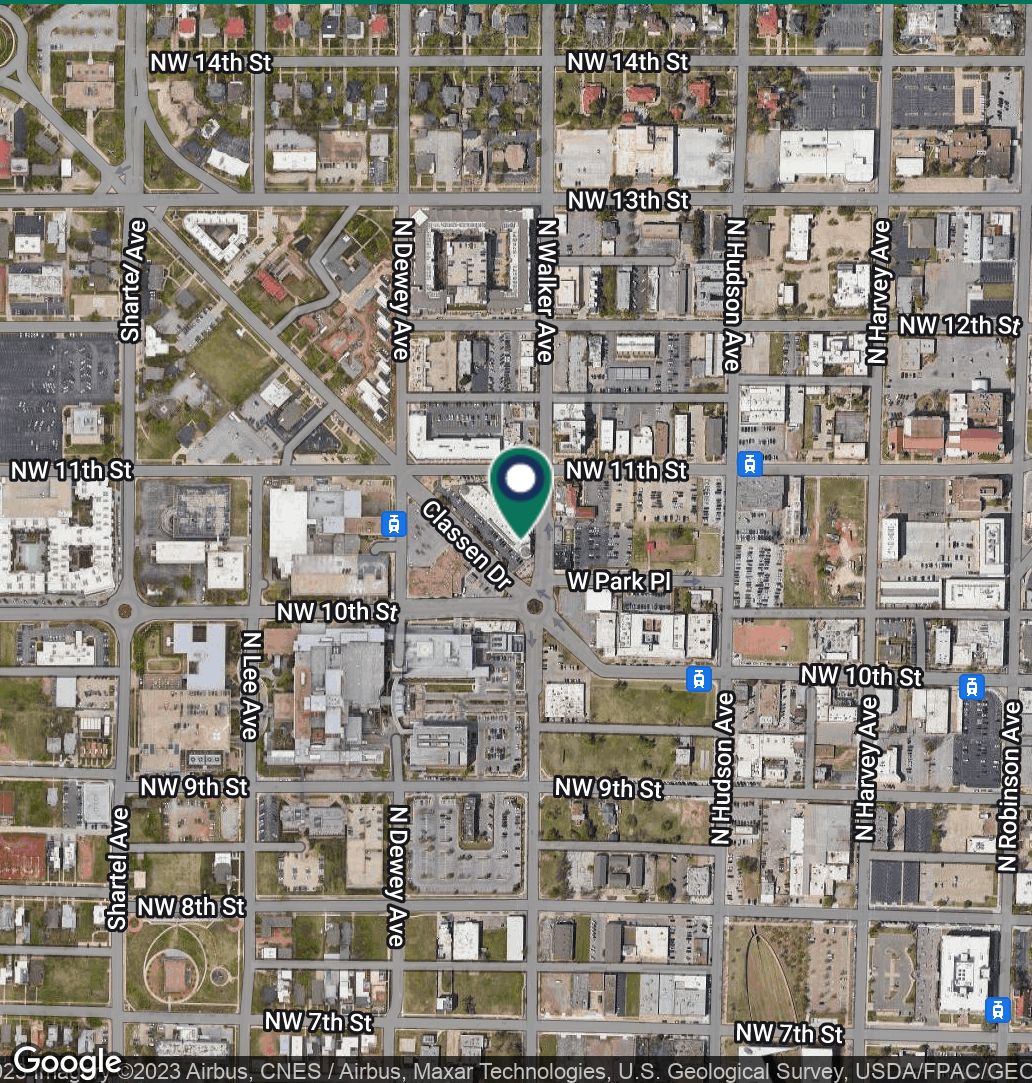
SUITE	TENANT	SIZE (SF)	LEASE TYPE	LEASE RATE	DESCRIPTION
Suite 202	Available	2,021 SF	NNN	\$29.00 SF/yr	6 private offices & conference room
Suite 203	Available	2,015 SF	NNN	\$29.00 SF/yr	3 private offices, conference room & kitchenette
Suite 204	Available	3,164 SF	NNN	\$29.00 SF/yr	6 private offices, conference room, IT, kitchen & open workspace
Suite 205	Available	2,933 - 8,112 SF	NNN	\$29.00 SF/yr	Open floor plan with a conference room & break room, panoramic view
Suite 206	Available	1,234 SF	NNN	\$29.00 SF/yr	Open floor plan with kitchenette
Suite 207	Available	947 - 2,181 SF	NNN	\$29.00 SF/yr	Open floor plan with kitchenette & conference room
Suite 208	Available	257 SF	NNN	\$29.00 SF/yr	Open floor plan / single office

ALLISON BARTA BAILEY

abailey@priceedwards.com

O: 405.239.1245 C: 405.620.3883

PLAZA COURT BUILDING - 2ND FLOOR 1100 N CLASSEN DRIVE OKLAHOMA CITY, OK 73103



ALLISON BARTA BAILEY

abailey@priceedwards.com

O: 405.239.1245 C: 405.620.3883