

## PLAZA COURT OFFICE |

1100 N CLASSEN DRIVE, OKLAHOMA CITY, OK 73103



### PROPERTY DESCRIPTION

Move-in ready suite in the Plaza Court Building is now available. Suite includes private offices, a conference room, reception and break area.

Suite has elevator and stair access from the Plaza Court lobby, which will see a renovation in 2023. Tenant can be listed in the lobby directory as well as wayfinding signage on their entrance. Parking is available in a nearby parking lot at no additional charge. Building is NNN, with NNN charges estimated at \$5.75 plus utilities and janitorial.

Employees will love the Plaza Court building – it is a well-located building near restaurants, bars, coffee and services.

### OFFERING SUMMARY

<b>Lease Rate:</b>	\$18.50 SF/yr (NNN)
<b>Number of Units:</b>	1
<b>Available SF:</b>	3,454 SF
<b>Building Size:</b>	38,501 SF

### ALLISON BARTA BAILEY

abailey@priceedwards.com  
O: 405.239.1245 C: 405.620.3883



## PLAZA COURT OFFICE

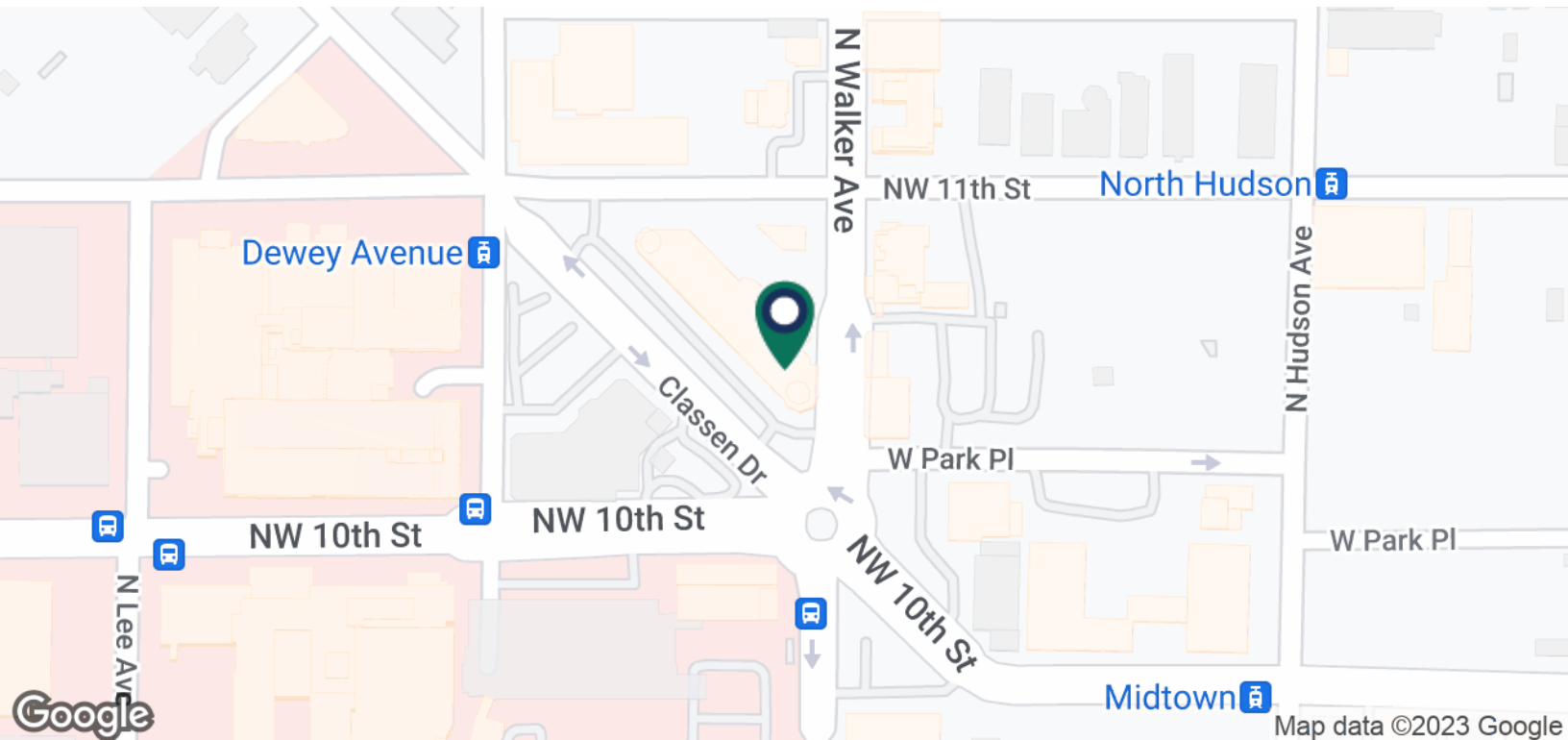
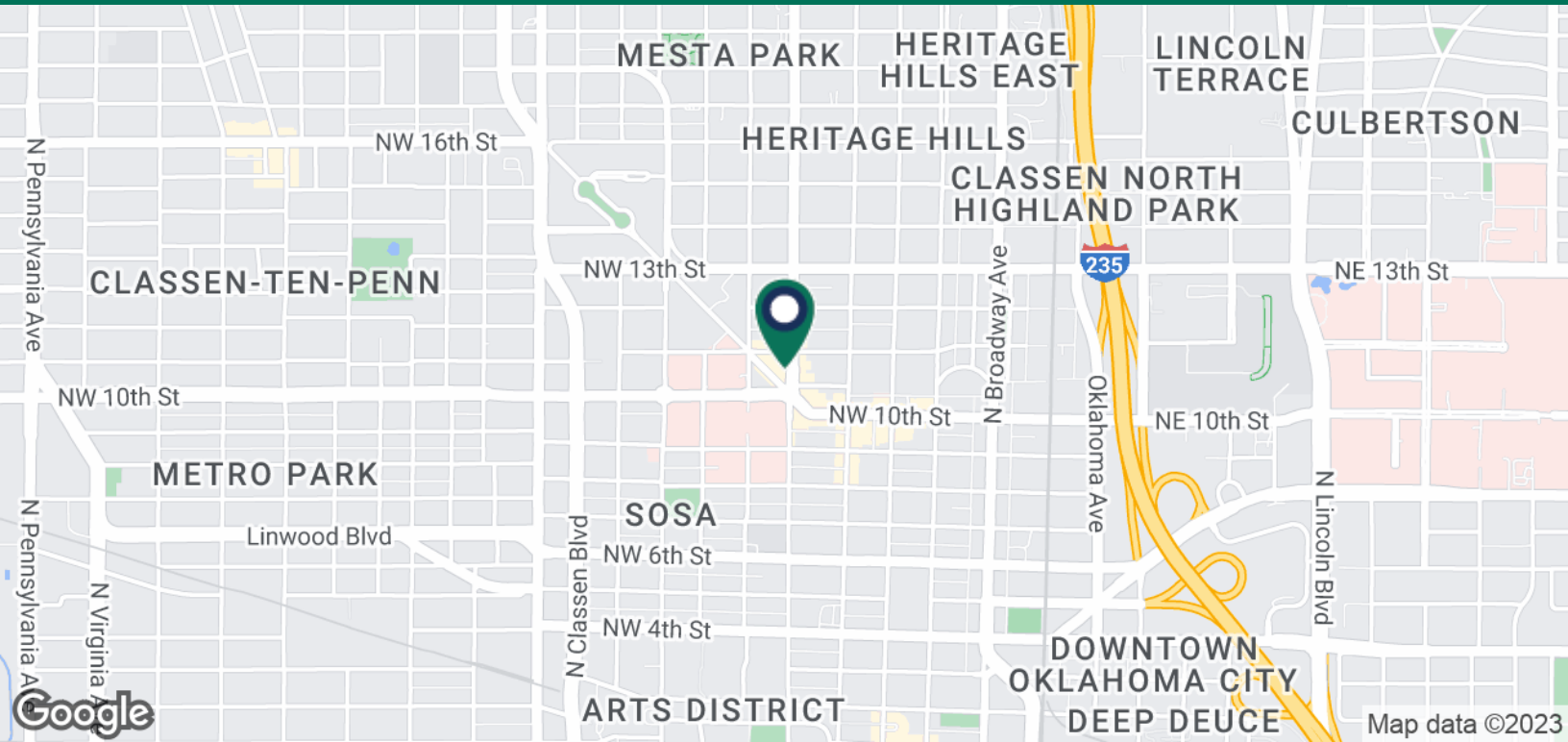
1100 N CLASSEN DRIVE, OKLAHOMA CITY, OK 73103



**ALLISON BARTA BAILEY**  
abailey@priceedwards.com  
O: 405.239.1245 C: 405.620.3883

## PLAZA COURT OFFICE

1100 N CLASSEN DRIVE, OKLAHOMA CITY, OK 73103



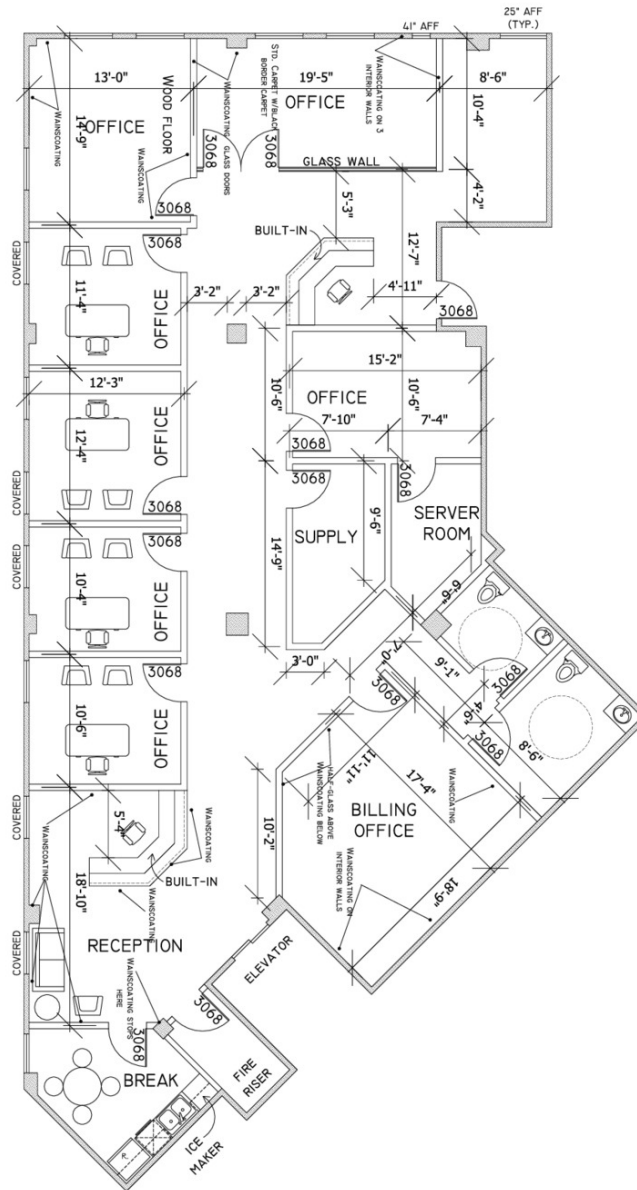
**ALLISON BARTA BAILEY**

abailey@priceedwards.com

O: 405.239.1245 C: 405.620.3883

## PLAZA COURT OFFICE

1100 N CLASSEN DRIVE, OKLAHOMA CITY, OK 73103



**ALLISON BARTA BAILEY**  
 abailey@priceedwards.com  
 O: 405.239.1245 C: 405.620.3883