



### OFFERING SUMMARY

Lease Rate:	\$24.00 SF/yr (NNN)
Building Size:	38,501 SF
Available SF:	2,021 SF
Year Built:	1927
Submarket:	Midtown

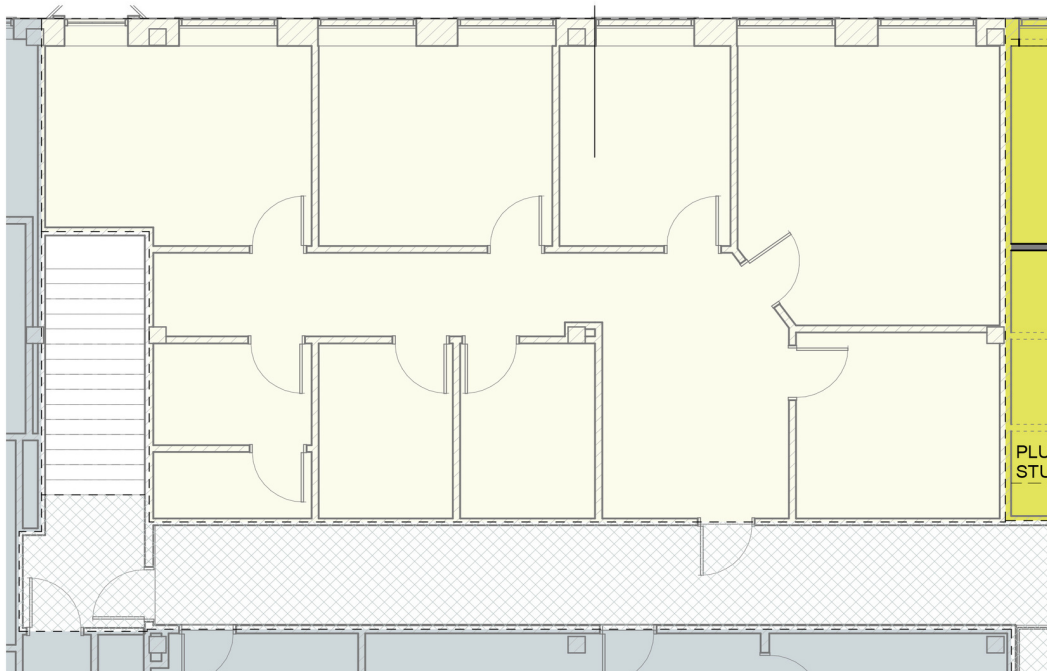
### PROPERTY OVERVIEW

Office in the 2nd floor of the iconic Plaza Court. This move-in ready office is walking distance to restaurants and retailers. The common area, hallways, restrooms and entrances to this floor will be remodeled winter 2023. Surface parking is included in this rental rate.

### PROPERTY HIGHLIGHTS

- 7 private offices
- Reception
- Newly remodeled restrooms and common area in 2023
- Midtown location near amenities

**ALLISON BARTA BAILEY**  
405.239.1245  
abailey@priceedwards.com  
priceedwards.com



**ALLISON BARTA BAILEY**  
405.239.1245  
abailey@priceedwards.com  
priceedwards.com

# Plaza Court Move-In Ready Office For Lease

1100 N Classen Drive, Suite 202, Oklahoma City, OK 73103



**ALLISON BARTA BAILEY**  
405.239.1245  
abailey@pricedwards.com  
pricedwards.com