

### PONTIAC BUILDING

1100 N BROADWAY OKLAHOMA CITY, OK 73103



#### ALLISON BARTA BAILEY

Price Edwards - Urban  
abailey@pricedwards.com  
O: 405.239.1245 C: 405.620.3883

#### Lease Rate

\$19.50 SF/yr (NNN)



## PONTIAC BUILDING

1100 N BROADWAY OKLAHOMA CITY, OK 73103



## PROPERTY DESCRIPTION

Move-in ready ground floor space available in the historic Pontiac building.

## PROPERTY HIGHLIGHTS

- Historic terrazzo floors
- High ceilings & two large storefront windows
- Prominent doors with sign on Broadway
- Shared multi-stall restrooms
- Build out includes lighting, electrical outlets and kitchen

## OFFERING SUMMARY

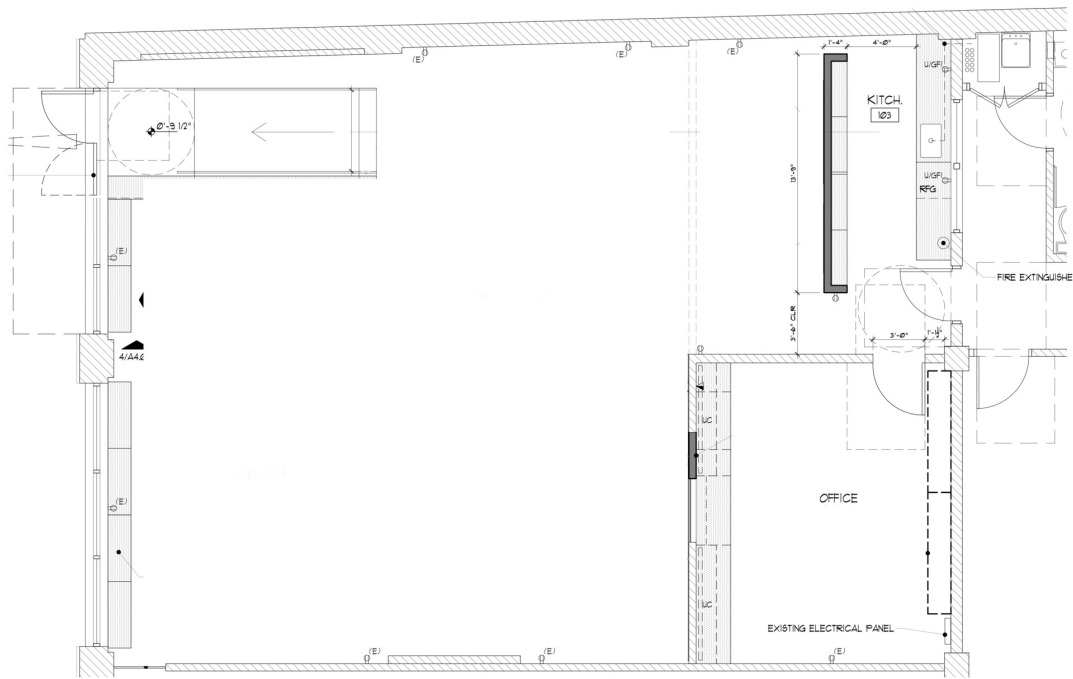
Lease Rate	\$19.50 SF/yr (NNN)
Number of Units:	3
Available SF:	2,000 SF
Building Size:	20,440 SF

## ALLISON BARTA BAILEY

abailey@priceedwards.com  
O: 405.239.1245 C: 405.620.3883

## PONTIAC BUILDING

1100 N BROADWAY OKLAHOMA CITY, OK 73103



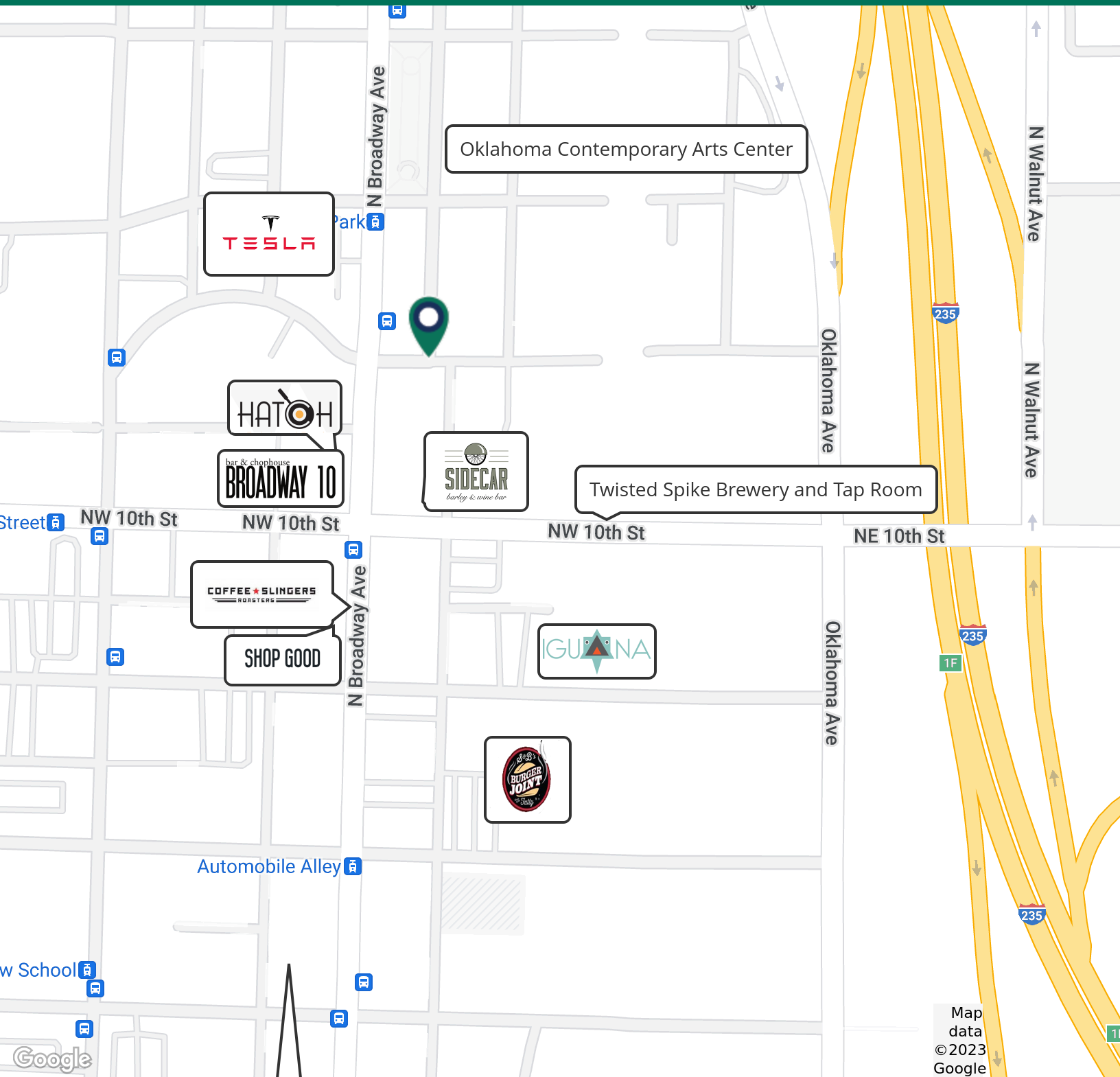
1 FLOOR PLAN  
A101 SCALE: 1/4"=1'-0"



**ALLISON BARTA BAILEY**  
 abailey@priceedwards.com  
 O: 405.239.1245 C: 405.620.3883

### PONTIAC BUILDING

1100 N BROADWAY OKLAHOMA CITY, OK 73103



**ALLISON BARTA BAILEY**

abailey@priceedwards.com

O: 405.239.1245 C: 405.620.3883