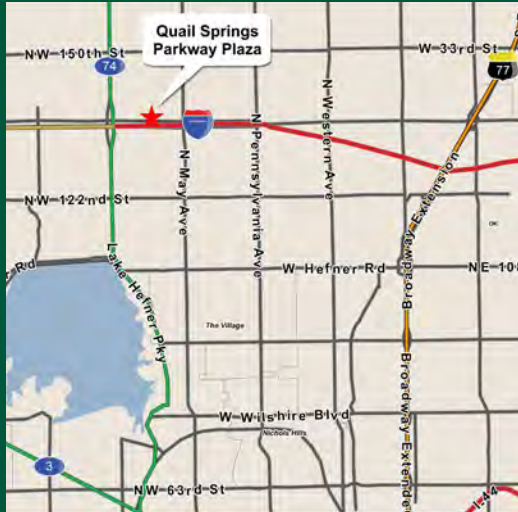




# Quail Springs Parkway Plaza



# Quail Springs Parkway Plaza



## For more information:

Craig Tucker  
ctucker@pricedwards.com

Tom Fields  
tfields@pricedwards.com

210 Park Avenue, Suite 700  
Oklahoma City, OK 73102

Phone: (405) 843-7474  
Fax: (405) 236-1849

[www.pricedwards.com](http://www.pricedwards.com)

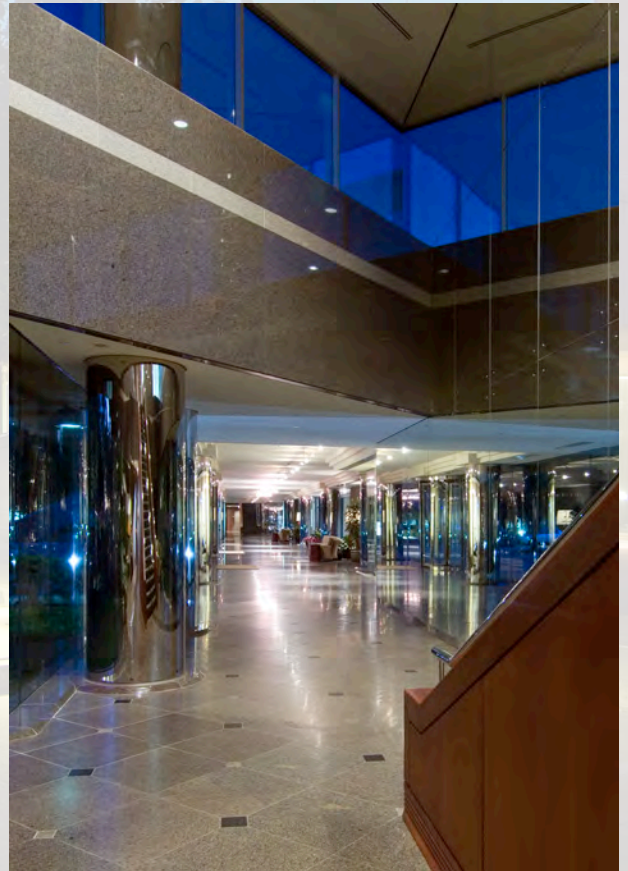
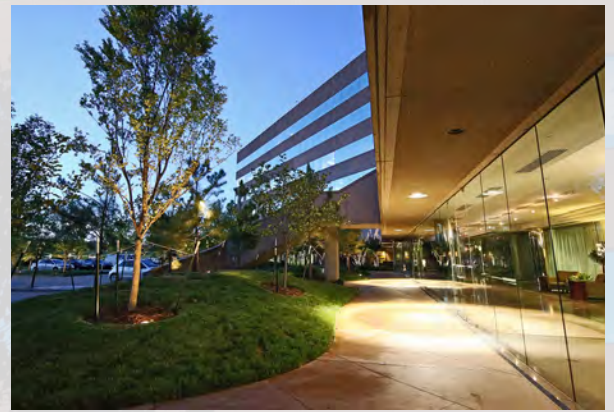
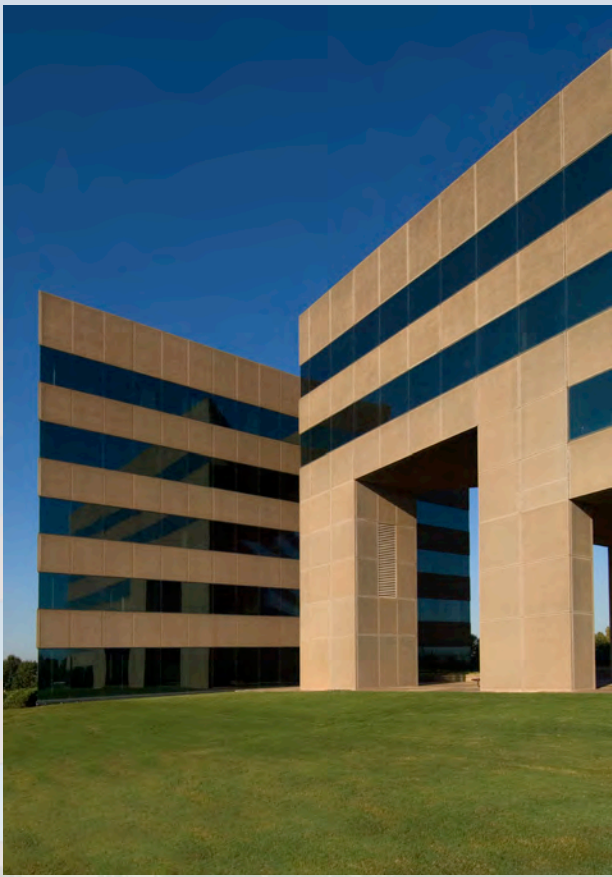
[www.quailspringsplaza.com](http://www.quailspringsplaza.com)



## Property Specifications

Address:	14000 Quail Springs Parkway Oklahoma City, Oklahoma 73134
Location:	Between May Avenue and the Lake Hefner Parkway just north of Memorial Road and the Kilpatrick Turnpike
Net Rentable Area:	298,610 square feet
Parking:	1,113 total spaces 1,025 surface spaces (free) 88 covered garage spaces (monthly rate)
Building Height:	6 stories each
Ceiling Height:	Floor 1: 9'0" Floor 2: 10'2" Floors 3-6: 8'6"
Security:	Staffed after-hours with on-site personnel 7 days per week. 16 cameras monitor all entrances and parking lots. After-hours access is available to tenants via Security PasKey card readers.
Building Hours:	8:00 a.m. - 6:00 p.m. Monday through Friday 8:00 a.m. - 1:00 p.m. Saturday
Amenities:	Full service restaurant with vending area Numerous hotels, shops and restaurants nearby On-site management office Loading Dock Covered Parking Fitness Facility





QUAIL SPRINGS PARKWAY  
First Floor

# Quail Springs Parkway Plaza

For more information:

Craig Tucker  
ctucker@pricedwards.com

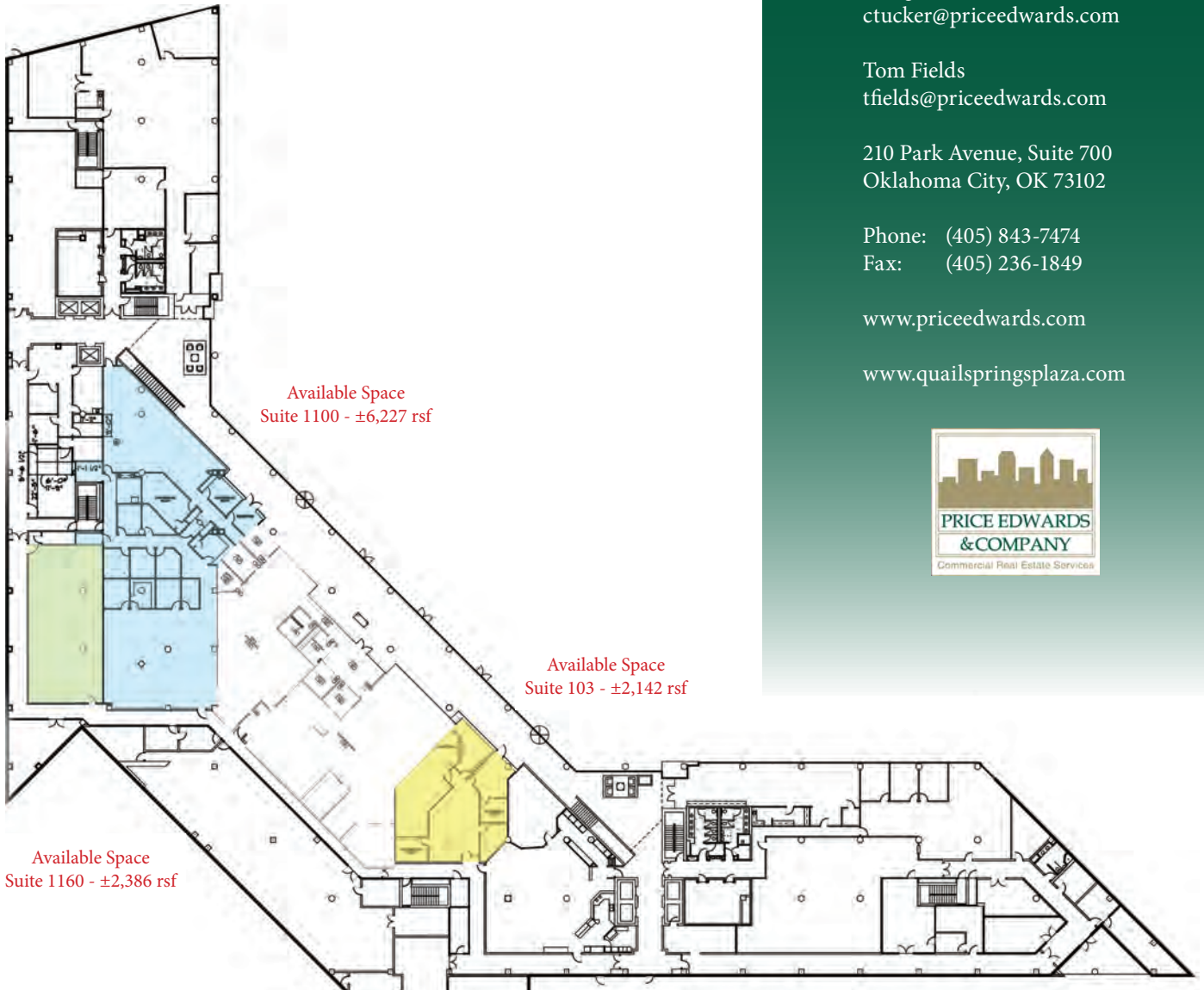
Tom Fields  
tfields@pricedwards.com

210 Park Avenue, Suite 700  
Oklahoma City, OK 73102

Phone: (405) 843-7474  
Fax: (405) 236-1849

[www.pricedwards.com](http://www.pricedwards.com)

[www.quailspringsplaza.com](http://www.quailspringsplaza.com)



QUAIL SPRINGS PARKWAY  
2nd Floor East

QUAIL SPRINGS PARKWAY  
Second Floor East



# Quail Springs Parkway Plaza

For more information:

**Craig Tucker**  
ctucker@pricedwards.com

**Tom Fields**  
tfields@pricedwards.com

210 Park Avenue, Suite 700  
Oklahoma City, OK 73102

Phone: (405) 843-7474  
Fax: (405) 236-1849

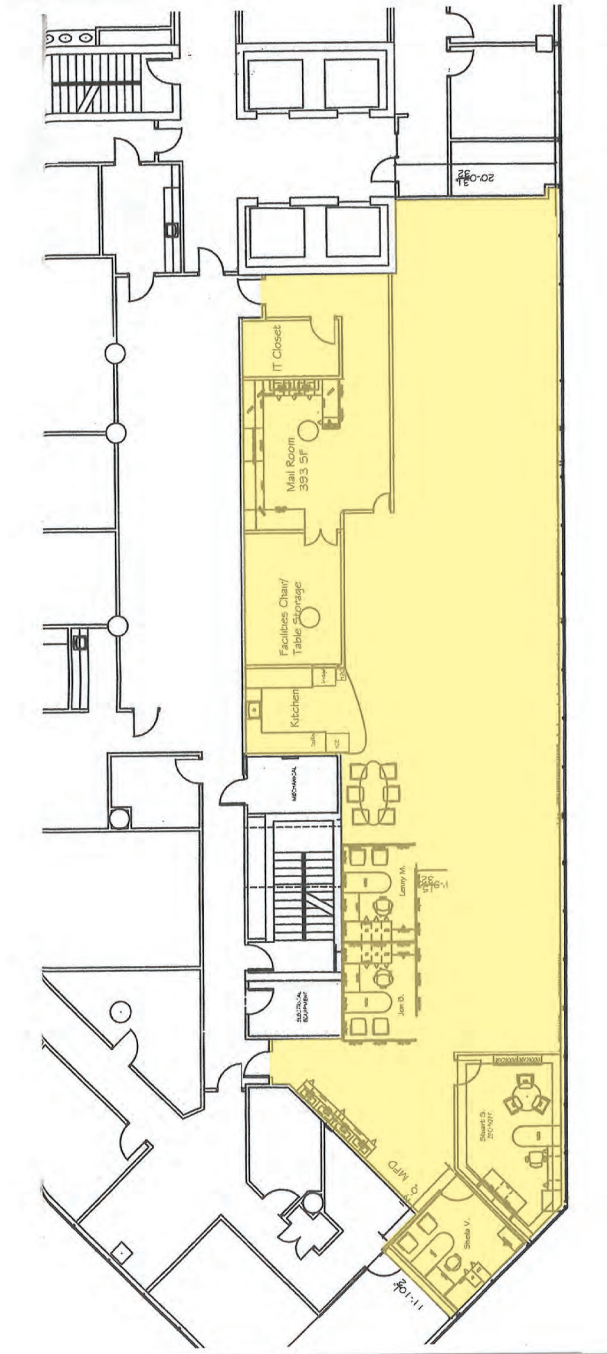
[www.pricedwards.com](http://www.pricedwards.com)

[www.quailspringsplaza.com](http://www.quailspringsplaza.com)



QUAIL SPRINGS PARKWAY  
3rd Floor East Suite 305

QUAIL SPRINGS PARKWAY  
Third Floor East, Suite 305



Available Space  
±4,935 RSF

## Quail Springs Parkway Plaza

For more information:

**Craig Tucker**  
ctucker@pricedwards.com

**Tom Fields**  
tfields@pricedwards.com

210 Park Avenue, Suite 700  
Oklahoma City, OK 73102

Phone: (405) 843-7474  
Fax: (405) 236-1849

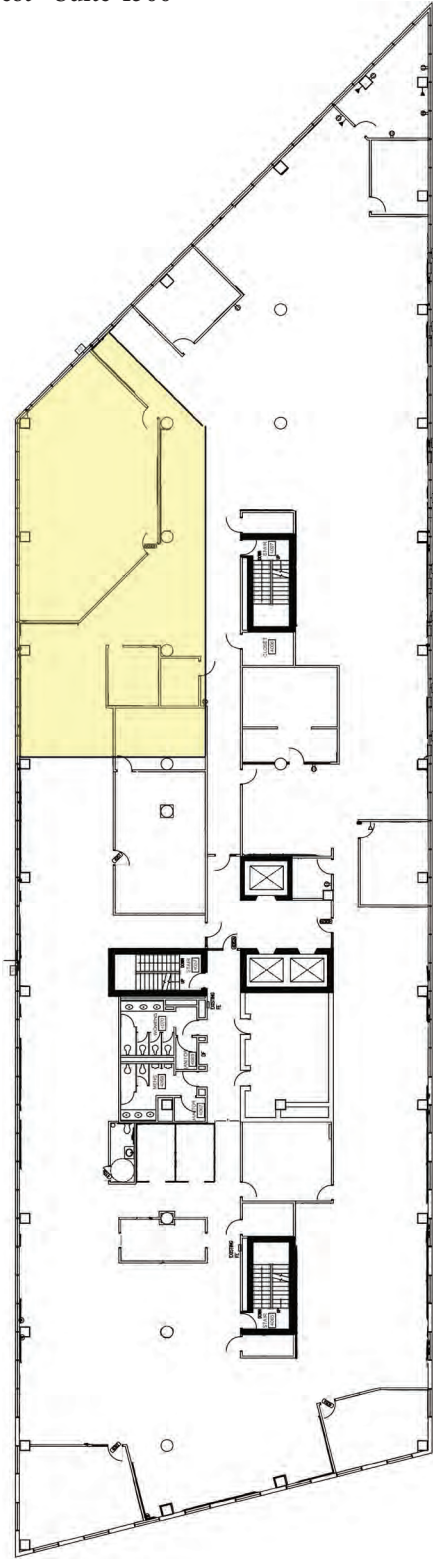
[www.pricedwards.com](http://www.pricedwards.com)

[www.quailspringsplaza.com](http://www.quailspringsplaza.com)



QUAIL SPRINGS PARKWAY  
4th Floor West - Suite 4500

QUAIL SPRINGS PARKWAY  
Fourth Floor West



Available Space  
±4,172 RSF

## Quail Springs Parkway Plaza

For more information:

**Craig Tucker**

ctucker@pricedwards.com

**Tom Fields**

tfields@pricedwards.com

210 Park Avenue, Suite 700  
Oklahoma City, OK 73102

Phone: (405) 843-7474

Fax: (405) 236-1849

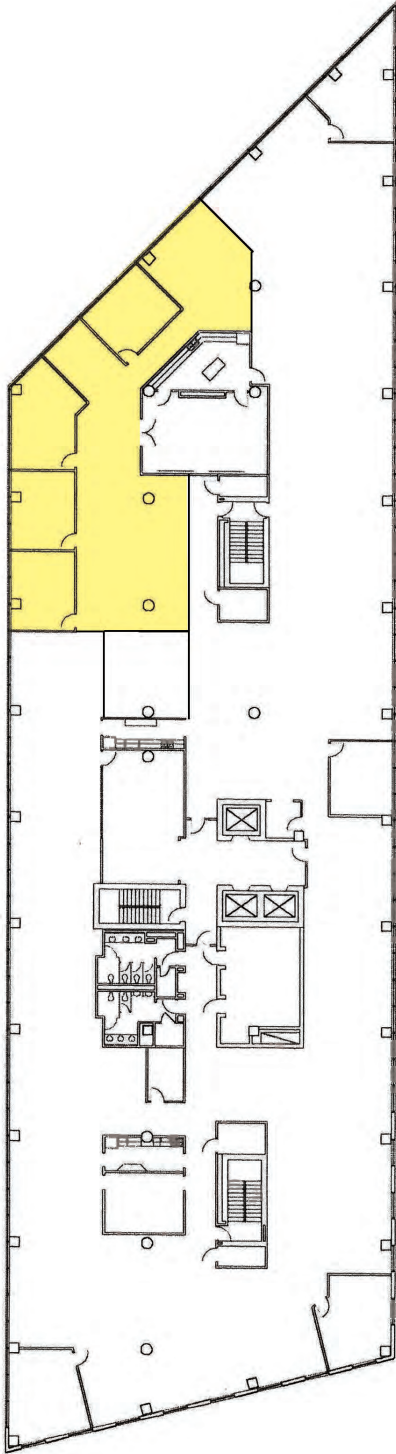
[www.pricedwards.com](http://www.pricedwards.com)

[www.quailspringsplaza.com](http://www.quailspringsplaza.com)



QUAIL SPRINGS PARKWAY  
5th Floor West Suite 5750

QUAIL SPRINGS PARKWAY  
Fifth Floor West



Available Space  
±3,588 RSF

## Quail Springs Parkway Plaza

**For more information:**

**Craig Tucker**  
ctucker@pricedwards.com

**Tom Fields**  
tfields@pricedwards.com

210 Park Avenue, Suite 700  
Oklahoma City, OK 73102

Phone: (405) 843-7474  
Fax: (405) 236-1849

[www.pricedwards.com](http://www.pricedwards.com)

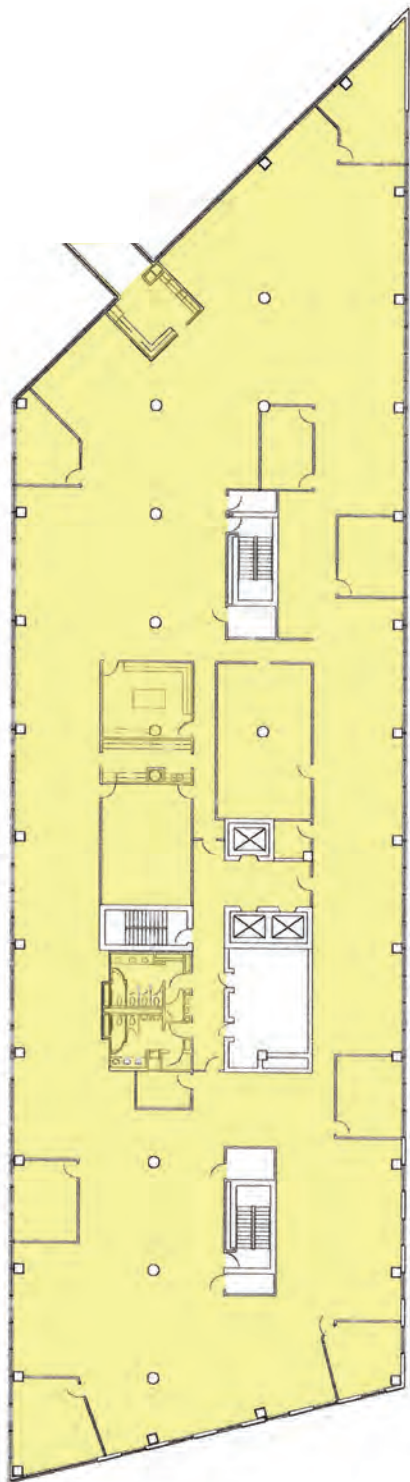
[www.quailspringsplaza.com](http://www.quailspringsplaza.com)





QUAIL SPRINGS PARKWAY  
6th Floor West - Will Divide

QUAIL SPRINGS PARKWAY  
Sixth Floor West



Available Space  
±25,552 RSF

## Quail Springs Parkway Plaza

For more information:

**Craig Tucker**  
ctucker@priceedwards.com

**Tom Fields**  
tfields@priceedwards.com

210 Park Avenue, Suite 700  
Oklahoma City, OK 73102

Phone: (405) 843-7474  
Fax: (405) 236-1849

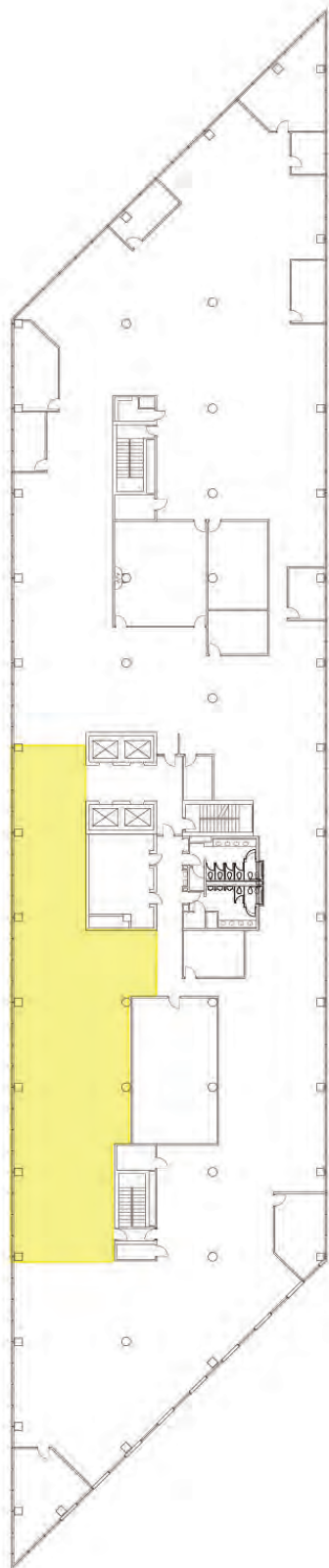
[www.priceedwards.com](http://www.priceedwards.com)

[www.quailspringsplaza.com](http://www.quailspringsplaza.com)



QUAIL SPRINGS PARKWAY  
5th Floor East

QUAIL SPRINGS PARKWAY  
Fifth Floor East



Available Space  
±5,133 RSF

## Quail Springs Parkway Plaza

**For more information:**

**Craig Tucker**  
ctucker@pricedwards.com

**Tom Fields**  
tfields@pricedwards.com

210 Park Avenue, Suite 700  
Oklahoma City, OK 73102

Phone: (405) 843-7474  
Fax: (405) 236-1849

[www.pricedwards.com](http://www.pricedwards.com)

[www.quailspringsplaza.com](http://www.quailspringsplaza.com)



QUAIL SPRINGS PARKWAY  
6th Floor East

QUAIL SPRINGS PARKWAY  
Sixth Floor East



EXISTING SIXTH FLOOR PLAN - EAST  
SCALE: 1/16"=1'-0"

Available Space  
±33,183 RSF

# Quail Springs Parkway Plaza

For more information:

**Craig Tucker**  
ctucker@pricedwards.com

**Tom Fields**  
tfields@pricedwards.com

210 Park Avenue, Suite 700  
Oklahoma City, OK 73102

Phone: (405) 843-7474  
Fax: (405) 236-1849

[www.pricedwards.com](http://www.pricedwards.com)

[www.quailspringsplaza.com](http://www.quailspringsplaza.com)

