

PRICE  
EDWARDS  
AND COMPANY

# Quail Springs Parkway Plaza



# Quail Springs Parkway Plaza



For more information:

Craig Tucker  
ctucker@pricedwards.com

Tom Fields  
tfields@pricedwards.com

210 Park Avenue, Suite 700  
Oklahoma City, OK 73102

Phone: (405) 843-7474  
Fax: (405) 236-1849

[www.pricedwards.com](http://www.pricedwards.com)

[www.quailspringsplaza.com](http://www.quailspringsplaza.com)

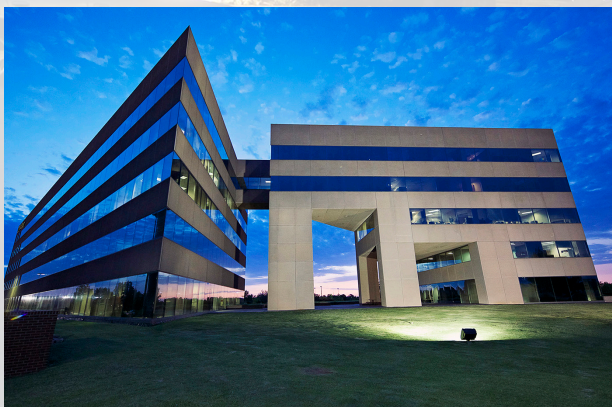
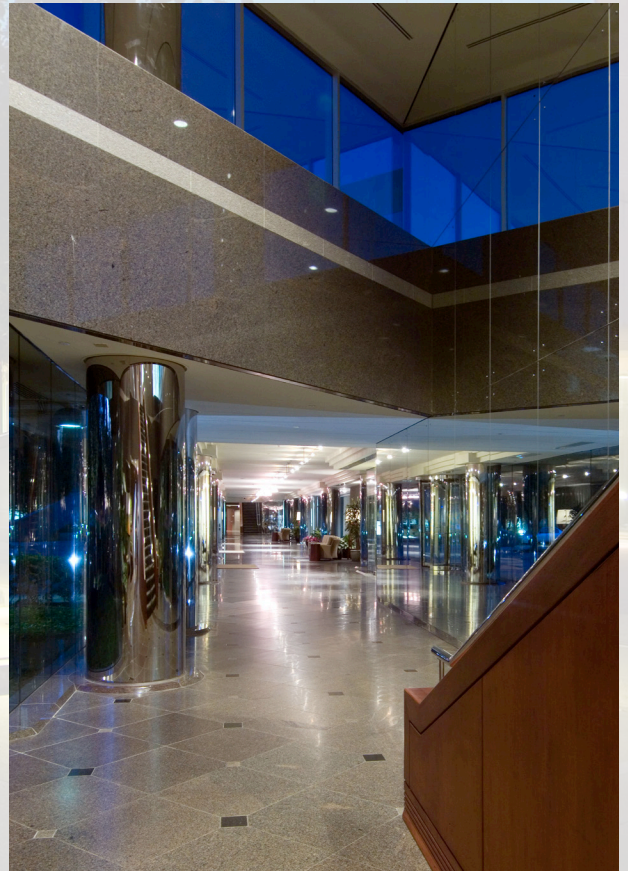


## Property Specifications

Address:	14000 Quail Springs Parkway Oklahoma City, Oklahoma 73134
Location:	Between May Avenue and the Lake Hefner Parkway just north of Memorial Road and the Kilpatrick Turnpike
Net Rentable Area:	298,610 square feet
Parking:	1,113 total spaces 1,025 surface spaces (free) 88 covered garage spaces (monthly rate)
Building Height:	6 stories each
Ceiling Height:	Floor 1: 9'0" Floor 2: 10'2" Floors 3-6: 8'6"
Security:	Staffed after-hours with on-site personnel 7 days per week. 16 cameras monitor all entrances and parking lots. After-hours access is available to tenants via Security PasKey card readers.
Building Hours:	8:00 a.m. - 6:00 p.m. Monday through Friday 8:00 a.m. - 1:00 p.m. Saturday
Amenities:	Full service restaurant with vending area Numerous hotels, shops and restaurants nearby On-site management office Loading Dock Covered Parking Fitness Facility









QUAIL SPRINGS PARKWAY  
First Floor

# Quail Springs Parkway Plaza

For more information:

**Craig Tucker**  
ctucker@pricedwards.com

**Tom Fields**  
tfields@pricedwards.com

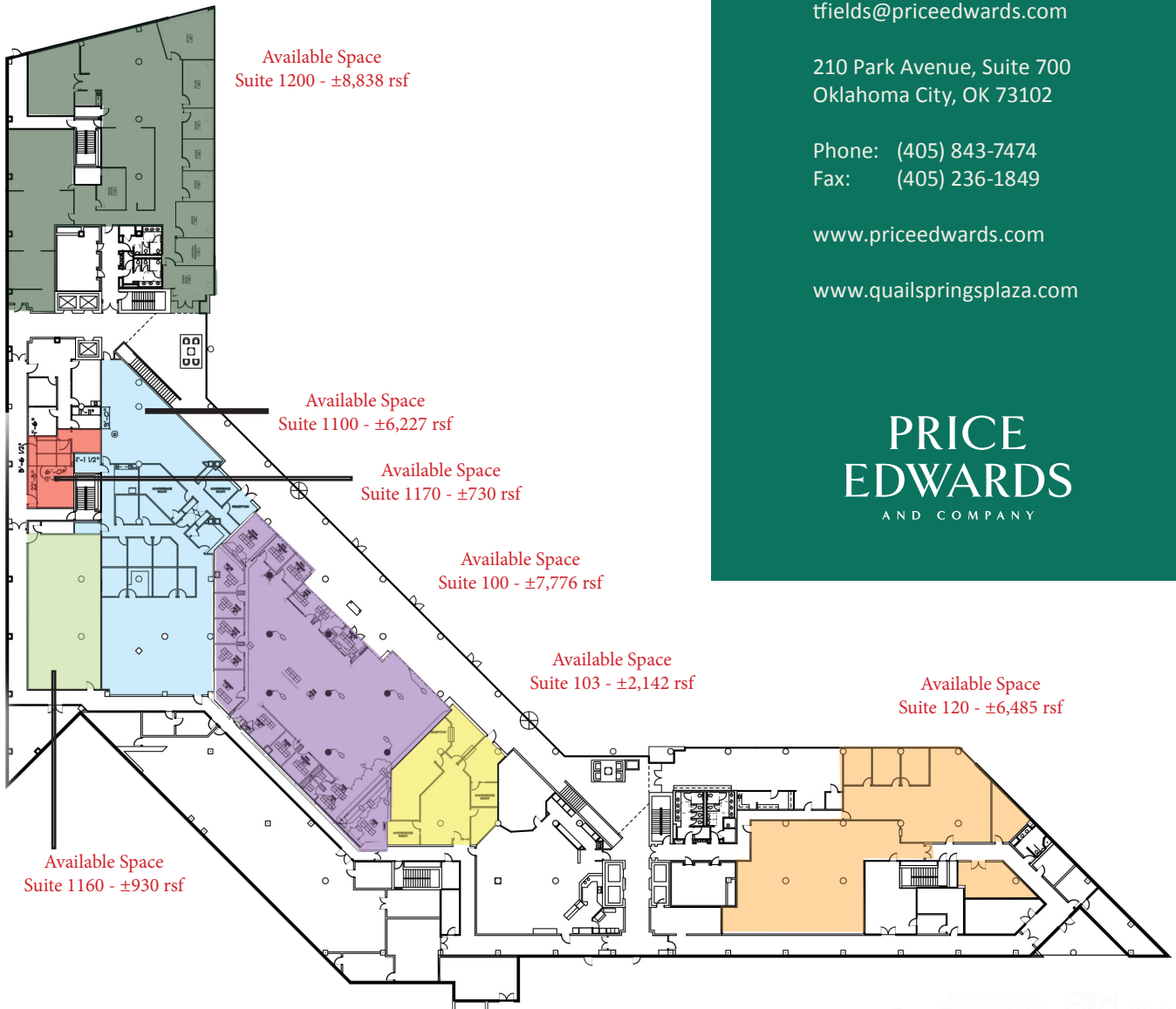
210 Park Avenue, Suite 700  
Oklahoma City, OK 73102

Phone: (405) 843-7474  
Fax: (405) 236-1849

[www.pricedwards.com](http://www.pricedwards.com)

[www.quailspringsplaza.com](http://www.quailspringsplaza.com)

**PRICE  
EDWARDS**  
AND COMPANY

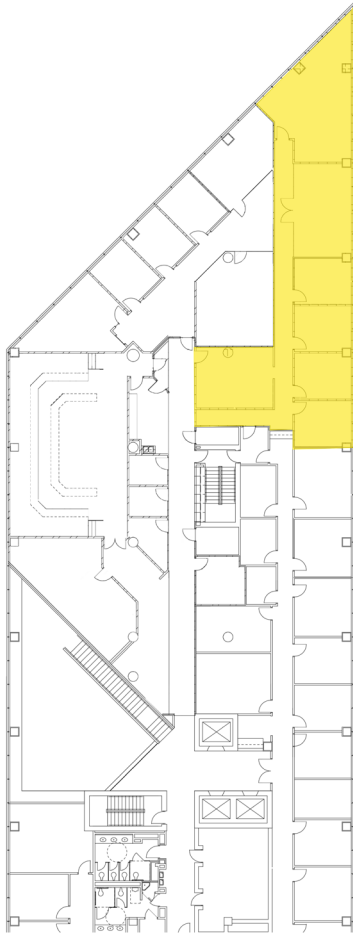


The information above has been obtained from sources believe reliable. While we do not doubt its accuracy, we have not verified it and make no guarantee, warranty, or representation about it. You and your legal and technical advisors should conduct a careful, independent investigation of the property to determine to your satisfaction to the suitability of the property for your needs.



QUAIL SPRINGS PARKWAY  
2nd Floor West

QUAIL SPRINGS PARKWAY  
Second Floor West



Available Space  
±2,783 RSF

## Quail Springs Parkway Plaza

**For more information:**

**Craig Tucker**  
ctucker@pricedwards.com

**Tom Fields**  
tfields@pricedwards.com

210 Park Avenue, Suite 700  
Oklahoma City, OK 73102

Phone: (405) 843-7474  
Fax: (405) 236-1849

[www.pricedwards.com](http://www.pricedwards.com)

[www.quailspringsplaza.com](http://www.quailspringsplaza.com)

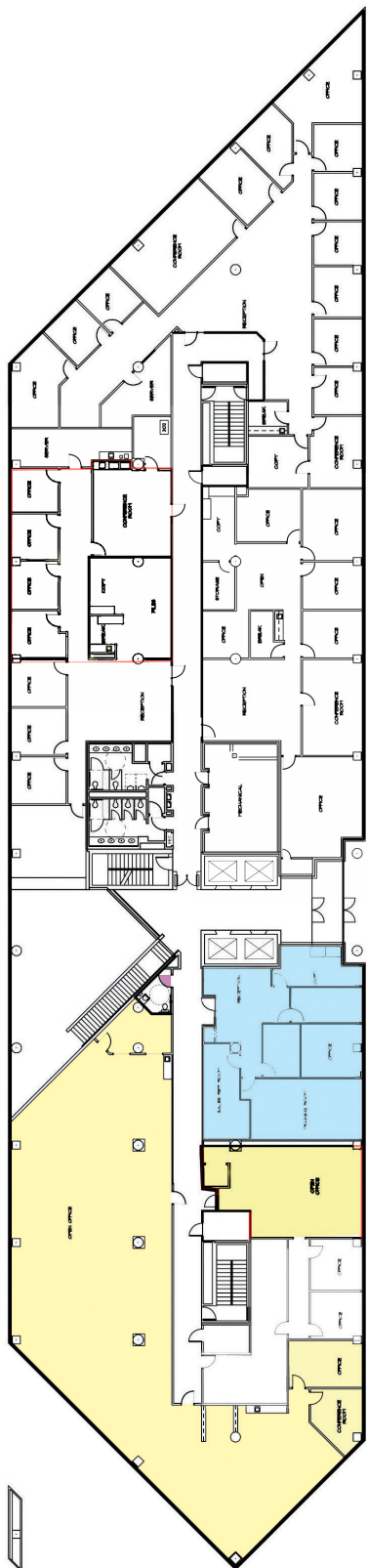
**PRICE  
EDWARDS**  
AND COMPANY



QUAIL SPRINGS PARKWAY **Leased**  
 2nd Floor East 022610

QUAIL SPRINGS PARKWAY  
 Second Floor East

Available Space  
 Suite 230 - 6,108 rsf



Available Space  
 Suite 220 - 2,051 rsf

Available Space  
 Suite 240 - 1,271 rsf

# Quail Springs Parkway Plaza

For more information:

**Craig Tucker**  
 ctucker@pricedwards.com

**Tom Fields**  
 tfields@pricedwards.com

210 Park Avenue, Suite 700  
 Oklahoma City, OK 73102

Phone: (405) 843-7474  
 Fax: (405) 236-1849

[www.pricedwards.com](http://www.pricedwards.com)

[www.quailspringsplaza.com](http://www.quailspringsplaza.com)

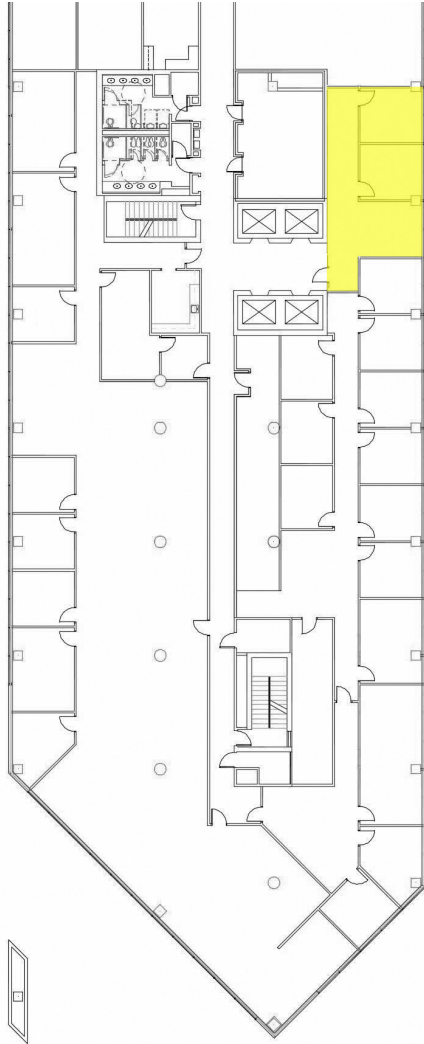
**PRICE  
 EDWARDS**  
 AND COMPANY

The information above has been obtained from sources believe reliable. While we do not doubt its accuracy, we have not verified it and make no guarantee, warranty, or representation about it. You and your legal and technical advisors should conduct a careful, independent investigation of the property to determine to your satisfaction to the suitability of the property for your needs.



QUAIL SPRINGS PARKWAY  
3rd Floor West

QUAIL SPRINGS PARKWAY  
Third Floor West



Available Space  
±867 RSF

## Quail Springs Parkway Plaza

For more information:

**Craig Tucker**

ctucker@pricedwards.com

**Tom Fields**

tfields@pricedwards.com

210 Park Avenue, Suite 700  
Oklahoma City, OK 73102

Phone: (405) 843-7474

Fax: (405) 236-1849

[www.pricedwards.com](http://www.pricedwards.com)

[www.quailspringsplaza.com](http://www.quailspringsplaza.com)

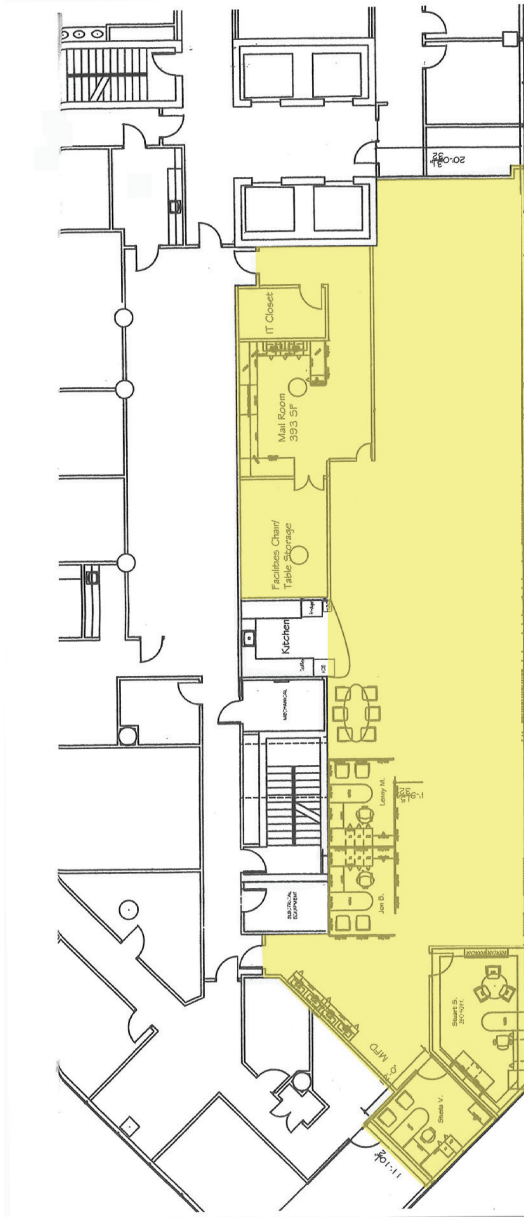
**PRICE  
EDWARDS**  
AND COMPANY



QUAIL SPRINGS PARKWAY  
3rd Floor East Suite 305

FULLY LEASED

QUAIL SPRINGS PARKWAY  
Third Floor East, Suite 305



Available Space  
±4,329 RSF

## Quail Springs Parkway Plaza

For more information:

**Craig Tucker**  
ctucker@pricedwards.com

**Tom Fields**  
tfields@pricedwards.com

210 Park Avenue, Suite 700  
Oklahoma City, OK 73102

Phone: (405) 843-7474  
Fax: (405) 236-1849

[www.pricedwards.com](http://www.pricedwards.com)

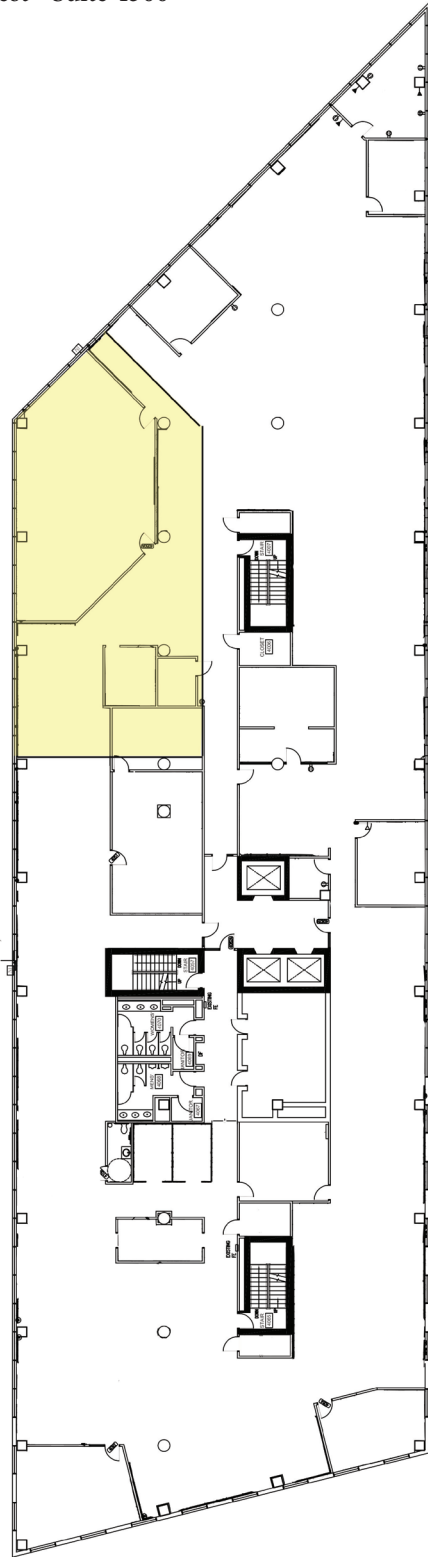
[www.quailspringsplaza.com](http://www.quailspringsplaza.com)

**PRICE  
EDWARDS**  
AND COMPANY



QUAIL SPRINGS PARKWAY  
4th Floor West - Suite 4500

QUAIL SPRINGS PARKWAY  
Fourth Floor West



Available Space  
±4,172 RSF

## Quail Springs Parkway Plaza

For more information:

**Craig Tucker**  
ctucker@pricedwards.com

**Tom Fields**  
tfields@pricedwards.com

210 Park Avenue, Suite 700  
Oklahoma City, OK 73102

Phone: (405) 843-7474  
Fax: (405) 236-1849

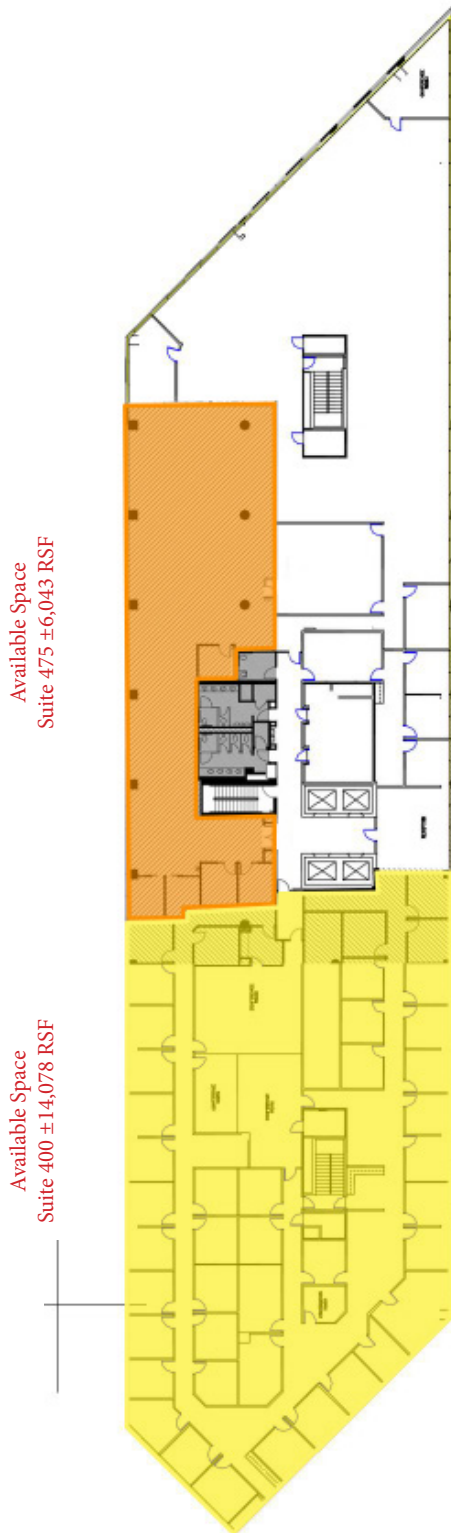
[www.pricedwards.com](http://www.pricedwards.com)

[www.quailspringsplaza.com](http://www.quailspringsplaza.com)

**PRICE  
EDWARDS**  
AND COMPANY

QUAIL SPRINGS PARKWAY  
4th Floor East

QUAIL SPRINGS PARKWAY  
Fourth Floor East



# Quail Springs Parkway Plaza

For more information:

**Craig Tucker**  
ctucker@pricedwards.com

**Tom Fields**  
tfields@pricedwards.com

210 Park Avenue, Suite 700  
Oklahoma City, OK 73102

Phone: (405) 843-7474  
Fax: (405) 236-1849

[www.pricedwards.com](http://www.pricedwards.com)

[www.quailspringsplaza.com](http://www.quailspringsplaza.com)

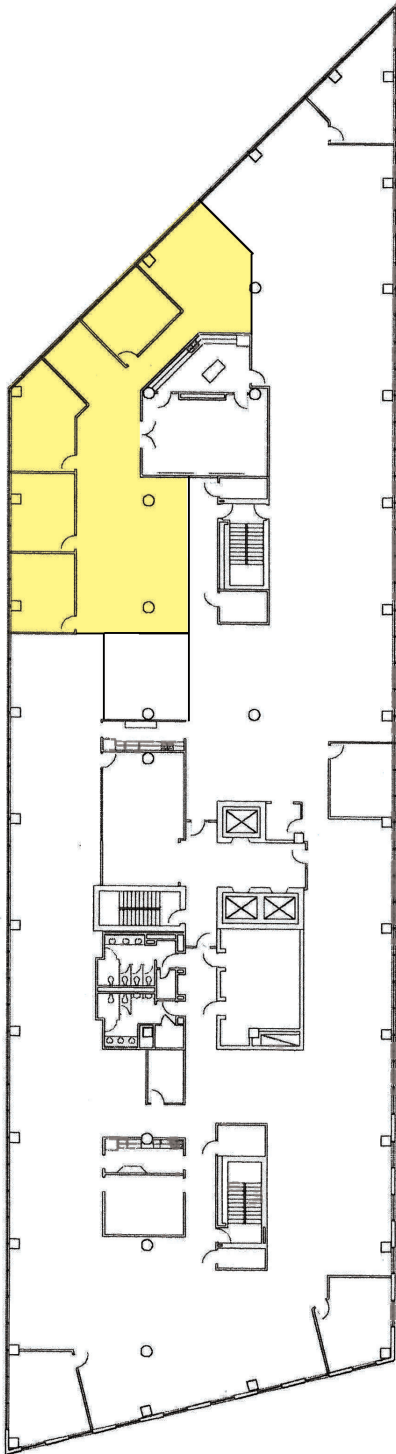
**PRICE  
EDWARDS**  
AND COMPANY



QUAIL SPRINGS PARKWAY  
5th Floor West Suite 5750

**LEASED!!!!**

QUAIL SPRINGS PARKWAY  
Fifth Floor West



Available Space  
±3,588 RSF

## Quail Springs Parkway Plaza

**For more information:**

**Craig Tucker**

ctucker@pricedwards.com

**Tom Fields**

tfields@pricedwards.com

210 Park Avenue, Suite 700  
Oklahoma City, OK 73102

Phone: (405) 843-7474

Fax: (405) 236-1849

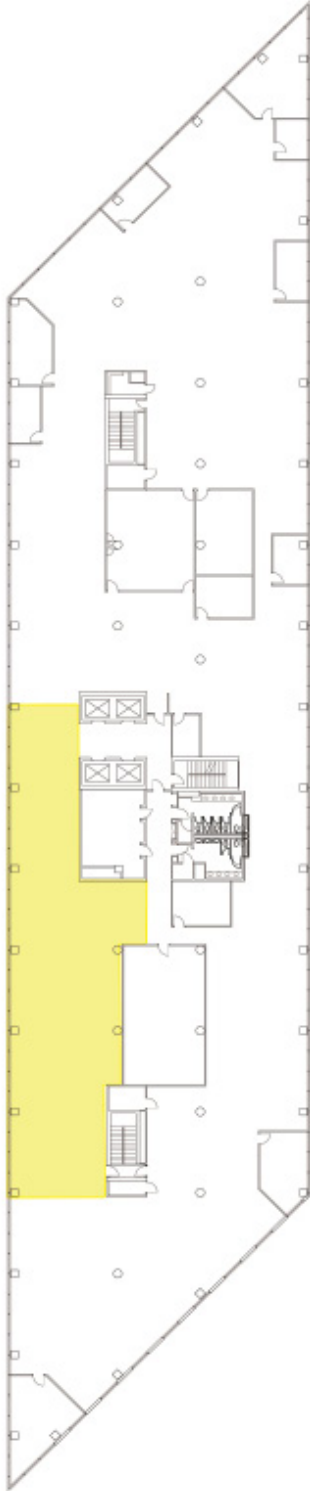
[www.pricedwards.com](http://www.pricedwards.com)

[www.quailspringsplaza.com](http://www.quailspringsplaza.com)

**PRICE  
EDWARDS**  
AND COMPANY

QUAIL SPRINGS PARKWAY  
5th Floor East

QUAIL SPRINGS PARKWAY  
Fifth Floor East



Available Space  
±5,216 RSF

## Quail Springs Parkway Plaza

**For more information:**

**Craig Tucker**

ctucker@pricedwards.com

**Tom Fields**

tfields@pricedwards.com

210 Park Avenue, Suite 700  
Oklahoma City, OK 73102

Phone: (405) 843-7474

Fax: (405) 236-1849

[www.pricedwards.com](http://www.pricedwards.com)

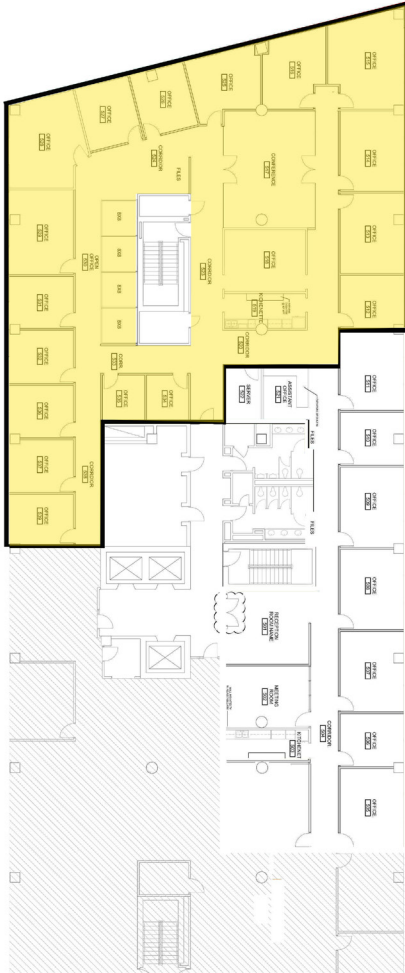
[www.quailspringsplaza.com](http://www.quailspringsplaza.com)

**PRICE  
EDWARDS**  
AND COMPANY



QUAIL SPRINGS PARKWAY  
Suite 5200

QUAIL SPRINGS PARKWAY  
Fifth Floor West



Available Space  
±7,606 RSF

## Quail Springs Parkway Plaza

For more information:

**Craig Tucker**

ctucker@pricedwards.com

**Tom Fields**

tfields@pricedwards.com

210 Park Avenue, Suite 700  
Oklahoma City, OK 73102

Phone: (405) 843-7474

Fax: (405) 236-1849

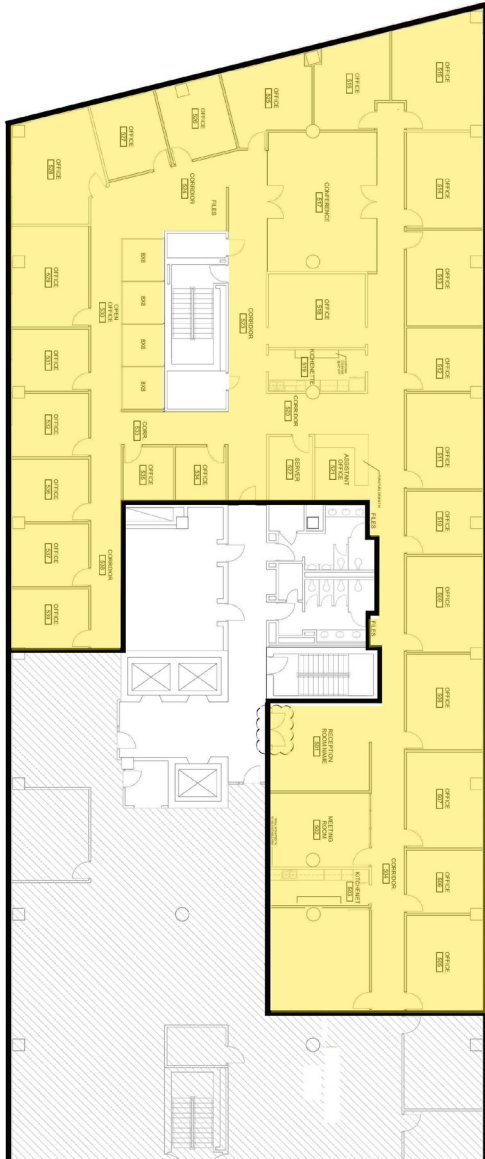
[www.pricedwards.com](http://www.pricedwards.com)

[www.quailspringsplaza.com](http://www.quailspringsplaza.com)

**PRICE  
EDWARDS**  
AND COMPANY

QUAIL SPRINGS PARKWAY  
Sublease Suite 5000

QUAIL SPRINGS PARKWAY  
Fifth Floor West



Available Space  
±11,724 RSF

# Quail Springs Parkway Plaza

For more information:

**Craig Tucker**  
ctucker@pricedwards.com

**Tom Fields**  
tfields@pricedwards.com

210 Park Avenue, Suite 700  
Oklahoma City, OK 73102

Phone: (405) 843-7474  
Fax: (405) 236-1849

[www.pricedwards.com](http://www.pricedwards.com)

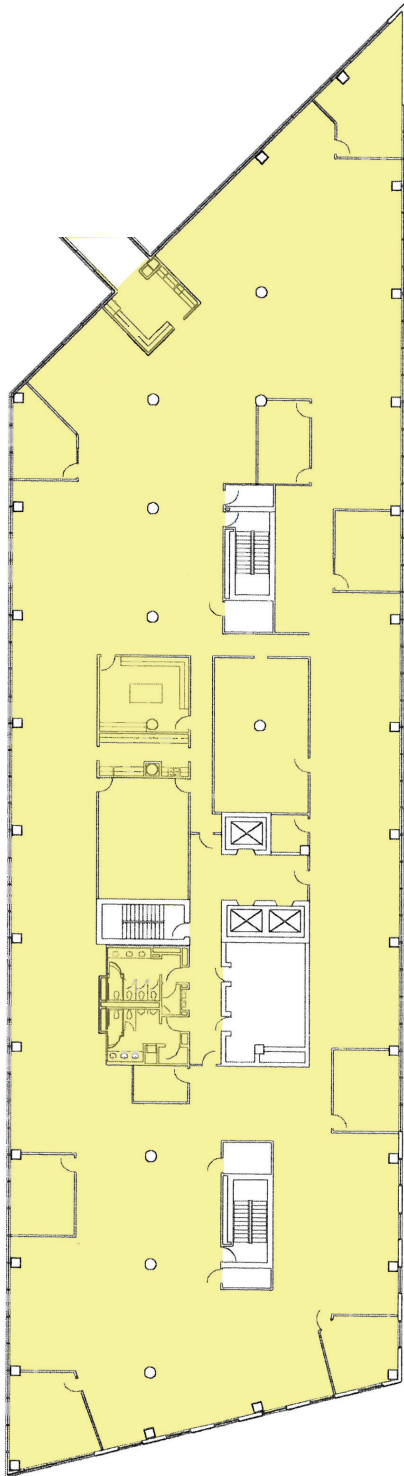
[www.quailspringsplaza.com](http://www.quailspringsplaza.com)

**PRICE  
EDWARDS**  
AND COMPANY



QUAIL SPRINGS PARKWAY  
6th Floor West - Will Divide

QUAIL SPRINGS PARKWAY  
Sixth Floor West



Available Space  
±25,552 RSF

## Quail Springs Parkway Plaza

For more information:

**Craig Tucker**

ctucker@pricedwards.com

**Tom Fields**

tfields@pricedwards.com

210 Park Avenue, Suite 700  
Oklahoma City, OK 73102

Phone: (405) 843-7474

Fax: (405) 236-1849

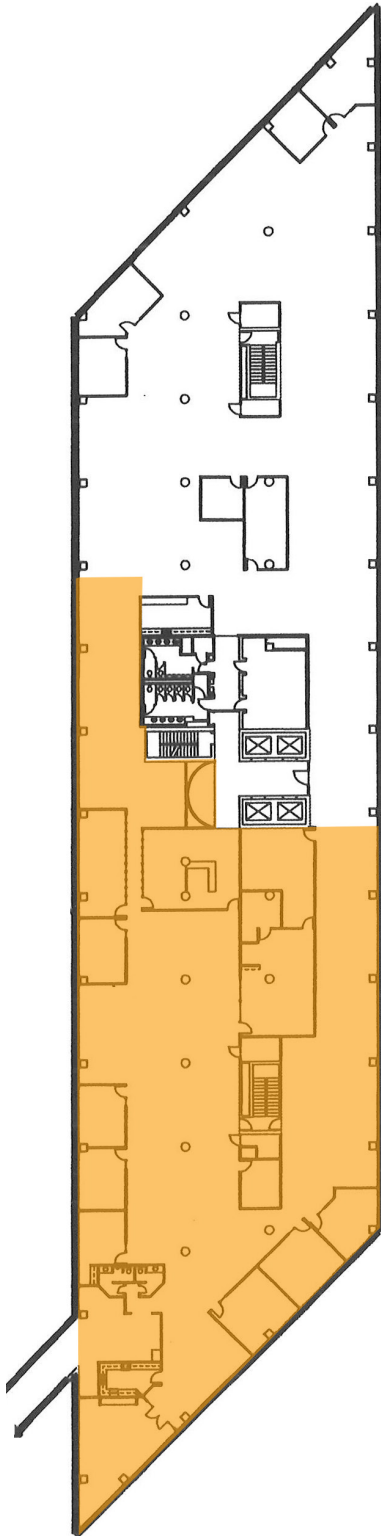
[www.pricedwards.com](http://www.pricedwards.com)

[www.quailspringsplaza.com](http://www.quailspringsplaza.com)

**PRICE  
EDWARDS**  
AND COMPANY

QUAIL SPRINGS PARKWAY  
6th Floor East

QUAIL SPRINGS PARKWAY  
Sixth Floor East



Available Space  
±19,063 RSF

## Quail Springs Parkway Plaza

For more information:

**Craig Tucker**

ctucker@pricedwards.com

**Tom Fields**

tfields@pricedwards.com

210 Park Avenue, Suite 700  
Oklahoma City, OK 73102

Phone: (405) 843-7474

Fax: (405) 236-1849

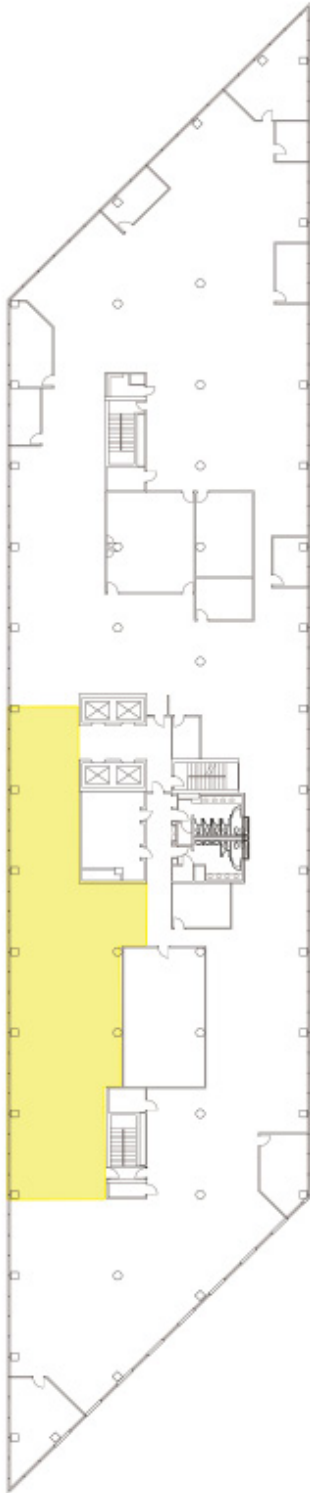
[www.pricedwards.com](http://www.pricedwards.com)

[www.quailspringsplaza.com](http://www.quailspringsplaza.com)

**PRICE  
EDWARDS**  
AND COMPANY

QUAIL SPRINGS PARKWAY  
5th Floor East

QUAIL SPRINGS PARKWAY  
Fifth Floor East



Available Space  
±5,216 RSF

## Quail Springs Parkway Plaza

**For more information:**

**Craig Tucker**

ctucker@pricedwards.com

**Tom Fields**

tfields@pricedwards.com

210 Park Avenue, Suite 700  
Oklahoma City, OK 73102

Phone: (405) 843-7474

Fax: (405) 236-1849

[www.pricedwards.com](http://www.pricedwards.com)

[www.quailspringsplaza.com](http://www.quailspringsplaza.com)

**PRICE  
EDWARDS**  
AND COMPANY