

SHOPPES AT QUAIL SPRINGS

13601 N May Ave, Oklahoma City, OK 73120

RETAIL - OFFICE SPACE - WWW.SHOPPESATQUAIL.COM



OFFERING SUMMARY

Available SF: 34,203 SF

Retail SF: 1,502 SF - 2,097 SF

Office SF: 2,000 - 12,000 SF

Lease Rate: Negotiable

Lease Type: NNN

Submarket: North/ Memorial
Corridor

Cross Streets: N May & W Memorial Rd

GEORGE WILLIAMS, CCIM

Retail Investment Specialist
gwilliams@priceedwards.com
405.239.1270
210 Park Ave, Suite 700, Oklahoma City, OK 73102
priceedwards.com

PHILLIP MAZAHERI, CCIM

Retail Investment Sales
pmazaheri@priceedwards.com
405.239.1221
210 Park Ave, Suite 700, Oklahoma City, OK 73102
priceedwards.com

VIEW PROPERTY WEBSITE

PROPERTY OVERVIEW

Shoppes at Quail Springs is a 73,000 square foot, two story, multi-tenant retail-office center located at May Ave. and Kilpatrick Turnpike; one of the busiest intersections in the corridor. This intersection serves as a main entry and exit hub for Quail Springs Mall traffic.

LOCATION OVERVIEW

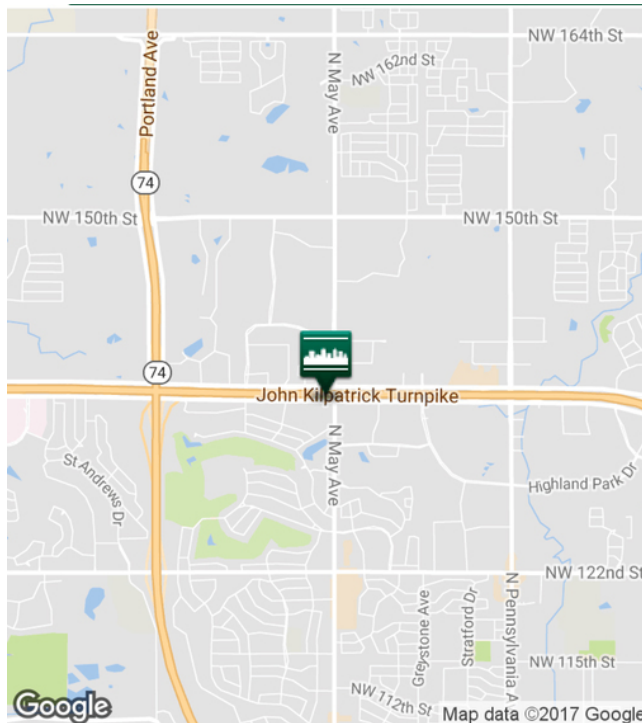
The Memorial Corridor is a magnet for corporate business, containing over 1.5 million square feet of office space, with over half being Class A properties. A vast medical office community is anchored by some of the most advanced hospitals in the region. The businesses in the corridor are supported by over 1,200 hotel rooms and suites. New big box retailers in the area include Von Maur and Dick's Sporting Goods. Catty-corner to the Shoppes at Quail Springs is a Barnes & Noble Book Store.

Suite 105	1,976 SF
Suite 115	1,502 SF
Suite 116 - 117	2,097 SF

012219

SHOPPES AT QUAIL SPRINGS

13601 N May Ave, Oklahoma City, OK 73120



DEMOGRAPHICS (per 2010 Census; 5 Miles Radius)

Total Population	142,785
Population Density	142,785
Median Age	36.5
Median Age (Male)	34.8
Median Age (Female)	37.6
Total Households	61,166
# of Persons Per HH	2.3
Average HH Income	\$82,356
Average House Value	\$205,228

TRAFFIC COUNTS (per ACOG)

N May Ave	north	23,095
N May Ave	south	17,697
W Memorial Rd	east	23,118
W Memorial Rd	west	28,920
Kilpatrick Turnpike	east	60,717
Kilpatrick Turnpike	west	61,235

GEORGE WILLIAMS, CCIM

Retail Investment Specialist
 gwilliams@priceedwards.com
 405.239.1270
 210 Park Ave, Suite 700, Oklahoma City, OK 73102
 priceedwards.com

PHILLIP MAZAHERI, CCIM

Retail Investment Sales
 pmazaheri@priceedwards.com
 405.239.1221
 210 Park Ave, Suite 700, Oklahoma City, OK 73102
 priceedwards.com

SHOPPES AT QUAIL SPRINGS

Additional Photos



GEORGE WILLIAMS, CCIM

Retail Investment Specialist
gwilliams@priceedwards.com
405.239.1270
210 Park Ave, Suite 700, Oklahoma City, OK 73102
priceedwards.com

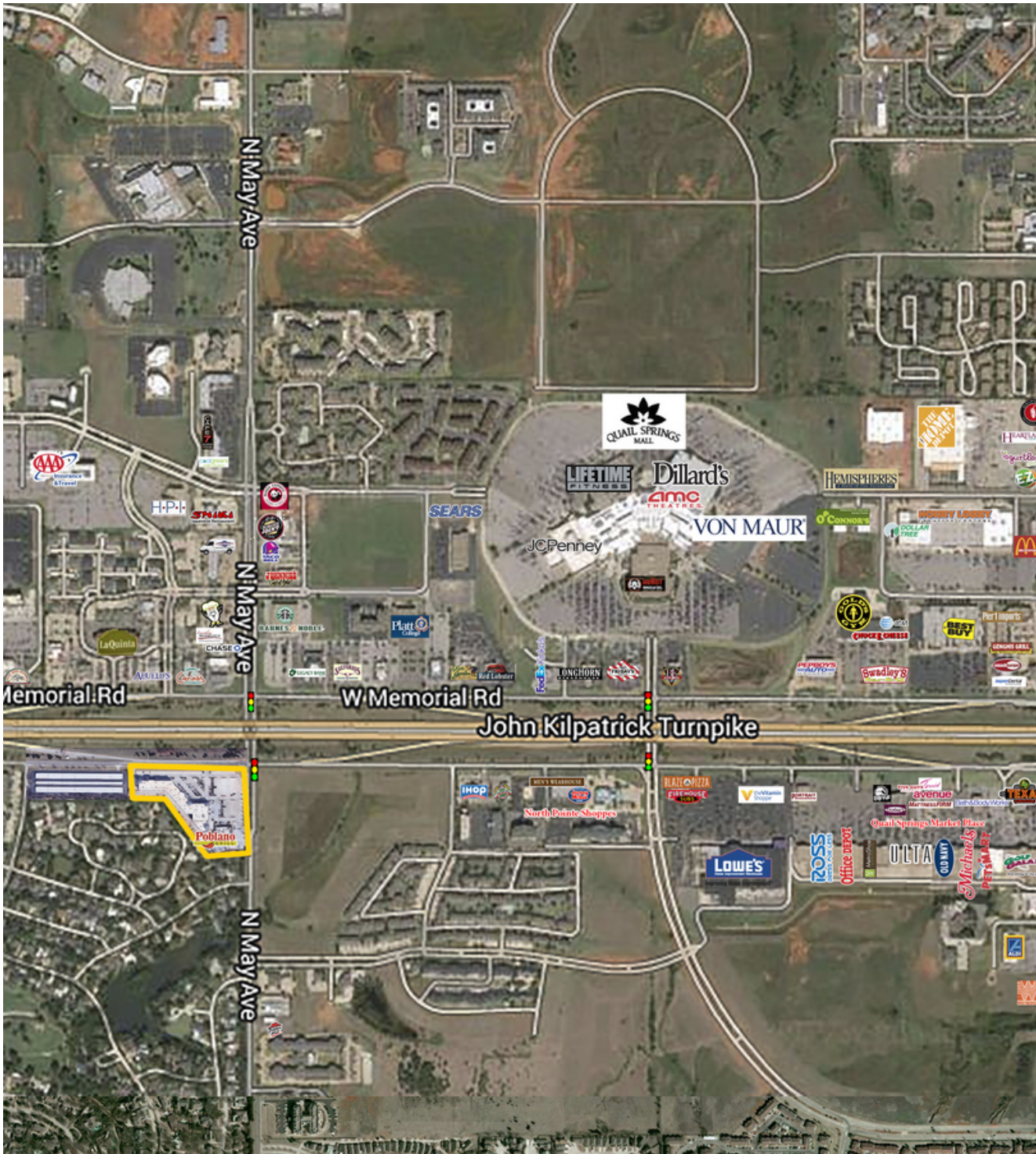
PHILLIP MAZAHERI, CCIM

Retail Investment Sales
pmazaheri@priceedwards.com
405.239.1221
210 Park Ave, Suite 700, Oklahoma City, OK 73102
priceedwards.com

The information above has been obtained from sources believe reliable. While we do not doubt its accuracy, we have not verified it and make no guarantee, warranty, or representation about it. You and your legal and technical advisors should conduct a careful, independent investigation of the property to determine to your satisfaction to the suitability of the property for your needs.

SHOPPES AT QUAIL SPRINGS

11360 N May Ave, Oklahoma City, OK 73120



GEORGE WILLIAMS, CCIM

Retail Investment Specialist
gwilliams@priceedwards.com
405.239.1270
210 Park Ave, Suite 700, Oklahoma City, OK 73102
priceedwards.com

PHILLIP MAZAHARI, CCIM

Retail Investment Sales
pmazaheri@priceedwards.com
405.239.1221
210 Park Ave, Suite 700, Oklahoma City, OK 73102
priceedwards.com