

SHOPS ON COMMERCE

807 N COMMERCE ST, ARDMORE, OK 73401



PROPERTY DESCRIPTION

Ardmore, Oklahoma, strategically positioned between Dallas and Oklahoma City, serves as an ideal location for retail goods and services. Its geographical advantage places it along the heavily traveled Interstate 35, providing a unique opportunity for businesses to cater not only to the local residents but also to the substantial commuter traffic.

One prominent retail hub in Ardmore is situated at the intersection of NW 12th Street and North Commerce. This location holds historical significance while also being part of a rapidly expanding retail corridor. The area features a diverse range of national retailers, making it a thriving shopping destination. Some notable names among these retailers include Wal-Mart, Lowe's Home Improvement, Ross Dress for Less, TJ Maxx, Academy Sports, AMC Theaters, Ulta Cosmetics, Chick-Fil-A, Starbucks, and more.

The presence of these well-known brands contributes to the city's retail landscape, attracting both local shoppers and travelers passing through the Interstate 35 corridor. The combination of historical charm and a growing retail presence makes Ardmore a dynamic destination for those seeking a variety of goods and services.

OFFERING SUMMARY

Lease Rate	\$16.00 - 26.00 SF/yr (NNN)
------------	-----------------------------

Number of Units:	4
------------------	---

Available SF:	795 - 4,708 SF
---------------	----------------

Suite 1:	2,796 SF or combine w/ warehouse 4,708 SF
----------	--

Can Combine Suites 3 & 4

Building Size:	5,842 SF
----------------	----------

SPACES	LEASE RATE	SPACE SIZE
Suite 1	\$16.00 - 19.00 SF/yr	2,796 - 4,708 SF
Suite 3	\$24.00 SF/yr	1,260 SF
Suite 4	\$26.00 SF/yr	795 SF

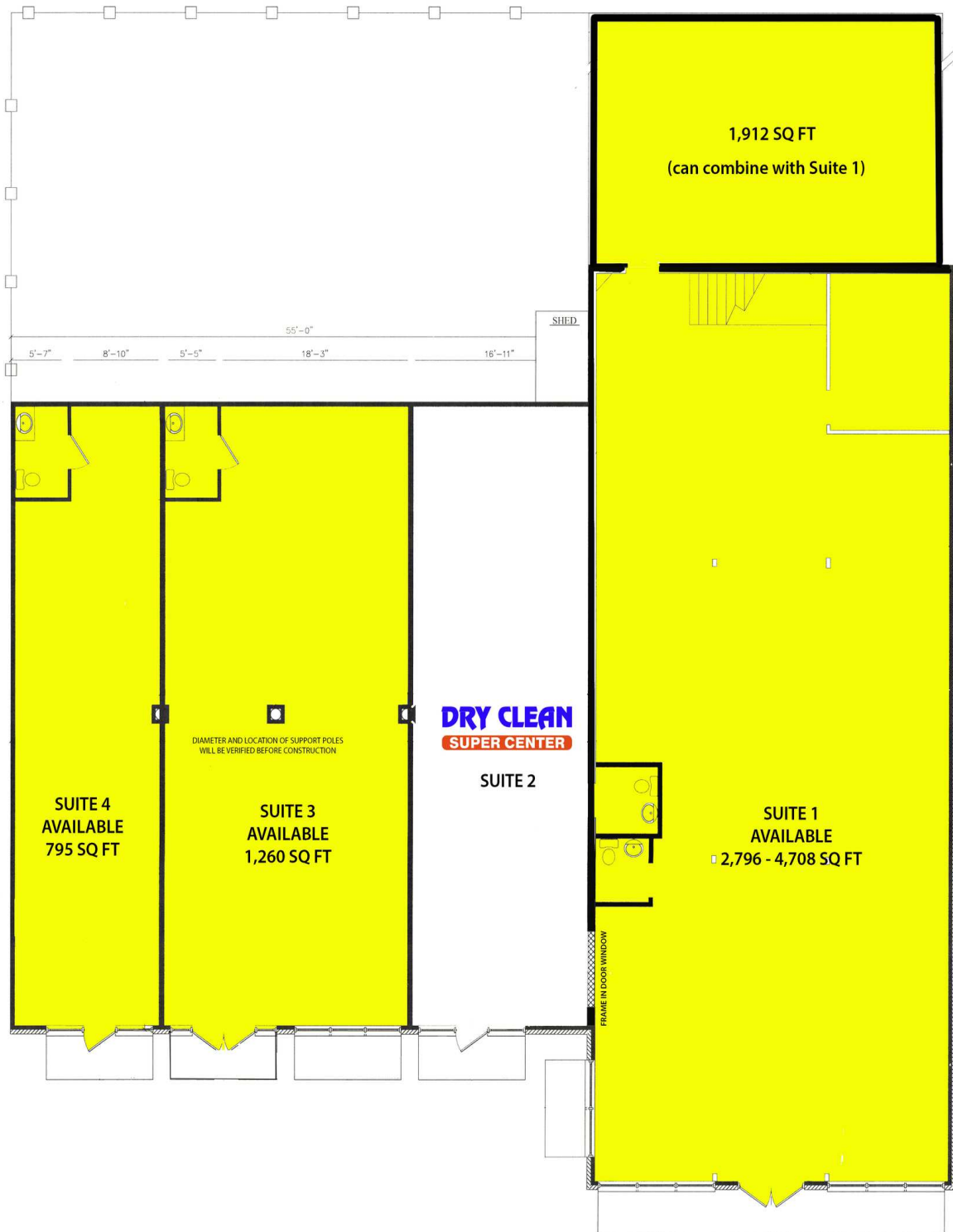
BRANDY RUNDEL

brundel@pricedwards.com

O: 405.990.5337 C: 405.990.5337

SHOPS ON COMMERCE

807 N COMMERCE STREET ARDMORE, OK 73401



BRANDY RUNDEL

brundel@pricedwards.com

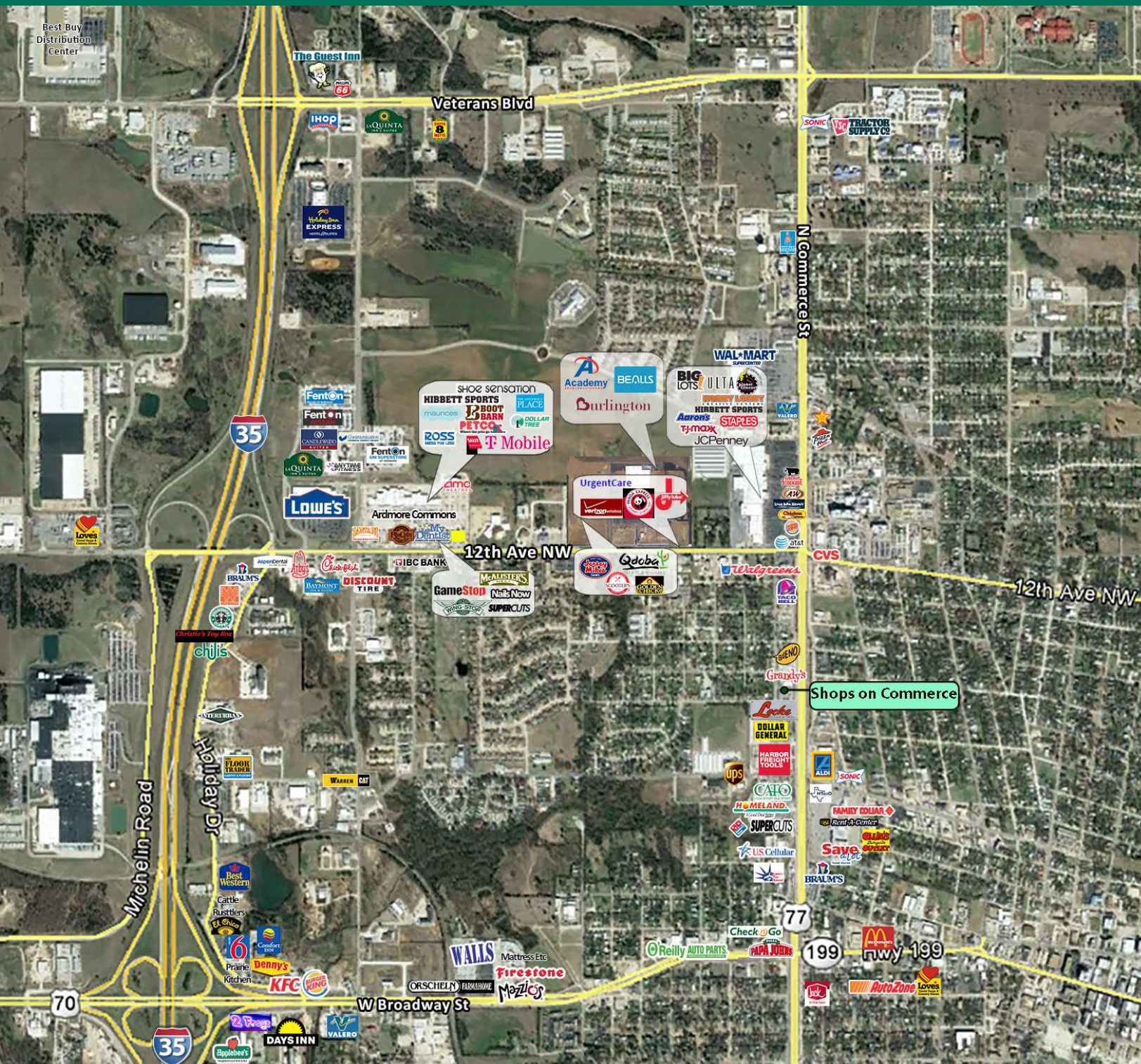
O: 405.990.5337 C: 405.990.5337

PRICE EDWARDS AND CO.

FOR
LEASE

DRIVE THRU END CAP AVAILABLE

807 N COMMERCE ST, ARDMORE, OK 73401



BRANDY RUNDEL

retail leasing associate

brundel@priceedwards.com

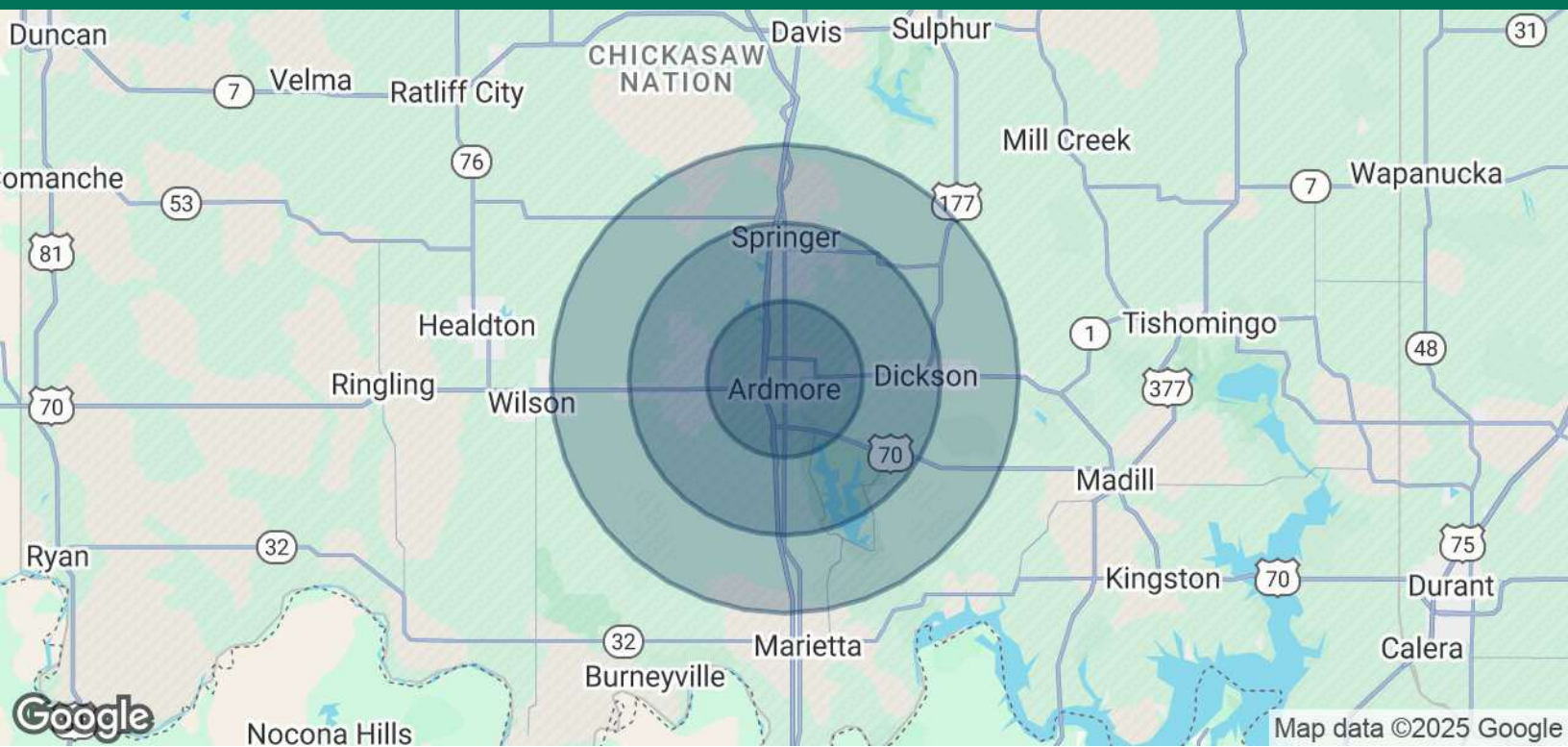
O: 405.990.5337 C: 405.990.5337

Lease Rate

\$16.00 - 26.00 SF/yr (NNN)

SHOPS ON COMMERCE

807 N COMMERCE ST, ARDMORE, OK 73401



POPULATION	5 MILES	10 MILES	15 MILES
Total Population	27,813	39,744	45,069
Average Age	41	41	41
Average Age (Male)	40	40	40
Average Age (Female)	42	42	42
HOUSEHOLDS & INCOME	5 MILES	10 MILES	15 MILES
Total Households	11,122	15,648	17,742
# of Persons per HH	2.5	2.5	2.5
Average HH Income	\$78,832	\$83,490	\$83,315
Average House Value	\$204,602	\$216,314	\$218,503

* Demographic data derived from 2020 ACS - US Census

08042025

BRANDY RUNDEL

brundel@pricedwards.com

O: 405.990.5337 C: 405.990.5337