



## OFFERING SUMMARY

|                |                    |
|----------------|--------------------|
| Lease Rate:    | \$20.00 SF/yr (MG) |
| Building Size: | 2,500 SF           |
| Available SF:  | 2,500 SF           |

07232020

## PROPERTY OVERVIEW

Move-in ready office suite available in the historic Chapman Building in the Plaza District. Walk to your favorite restaurants and shops in the district, but appreciate your reserved parking in this nicely renovated suite.

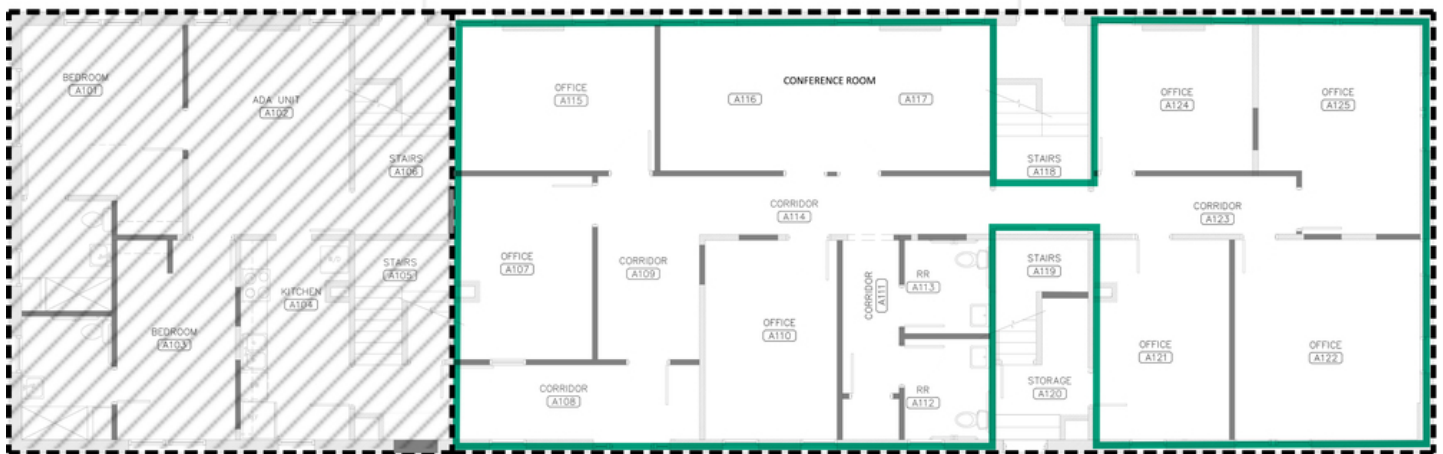
## PROPERTY HIGHLIGHTS

- 7 Private Offices
- 16-person Conference Room
- File room/open office
- Kitchenette
- Reserved Parking
- Walking distance to Plaza District restaurants
- Move-in ready

**GIRMA MOANING**  
405.239.1244  
gmoaning@priceedwards.com  
priceedwards.com

**ALLISON BARTA BAILEY**  
405.239.1245  
abailey@priceedwards.com  
priceedwards.com

## *the* CHAPMAN



GIRMA MOANING  
405.239.1244  
gmoaning@pricedwards.com  
pricedwards.com

ALLISON BARTA BAILEY  
405.239.1245  
abailey@pricedwards.com  
pricedwards.com



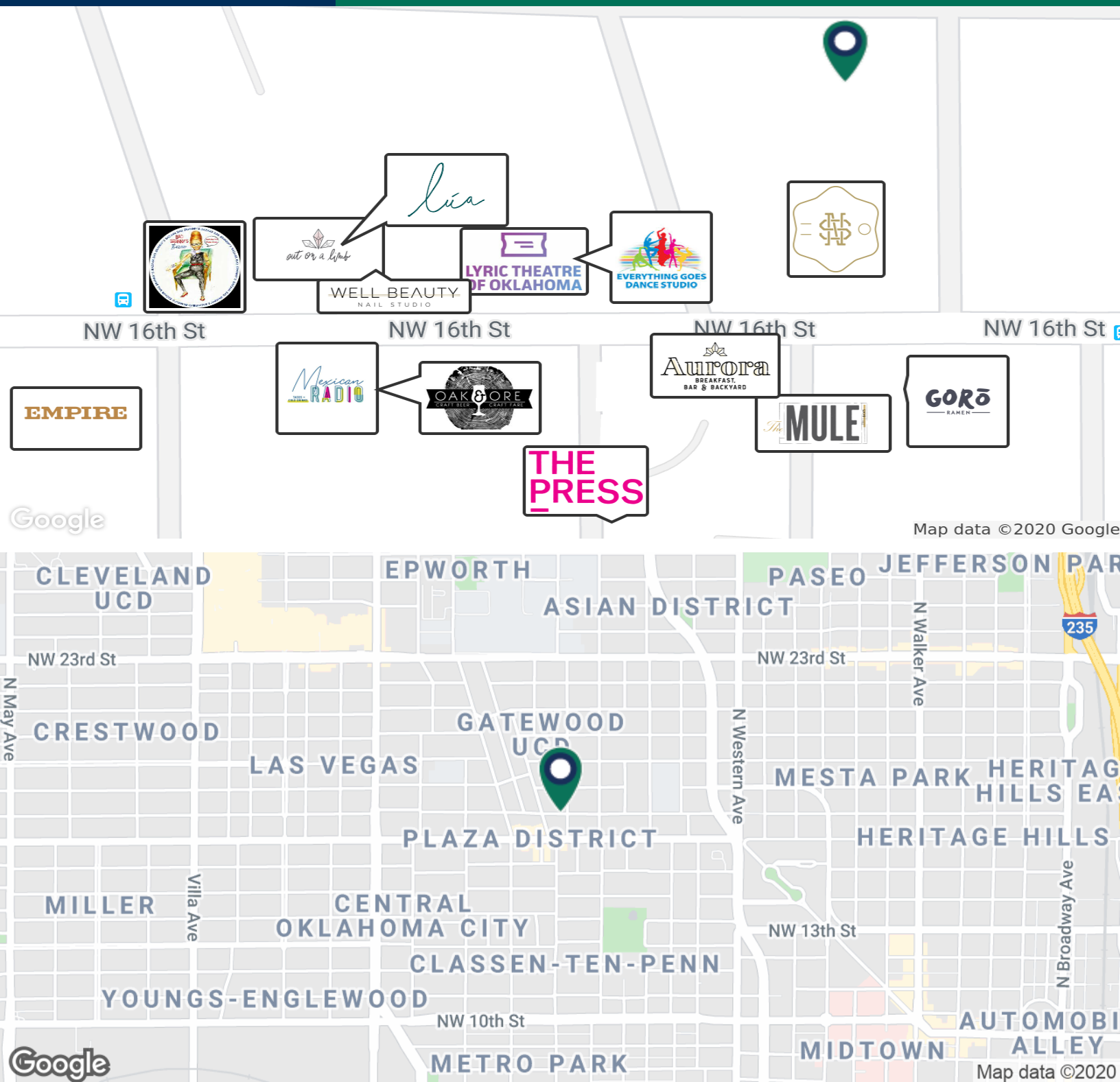
# The Chapman

1700 NW 17th St, Oklahoma City, OK 73106



**GIRMA MOANING**  
405.239.1244  
gmoaning@priceedwards.com  
priceedwards.com

**ALLISON BARTA BAILEY**  
405.239.1245  
abailey@priceedwards.com  
priceedwards.com



GIRMA MOANING  
405.239.1244  
gmoaning@priceedwards.com  
priceedwards.com

ALLISON BARTA BAILEY  
405.239.1245  
abailey@priceedwards.com  
priceedwards.com