



## OFFERING SUMMARY

Lease Rate	\$20.00 SF/yr (NNN)
Building Size:	37,684 SF
Available SF:	2,150 SF
Submarket:	North
Traffic Counts:	
N May Ave - north	25,134
N May Ave - south	21,022
W Memorial Rd - east	22,220
W Memorial Rd - west	23,118
John Kilpartick Turnpike	34,763   35,895

## PROPERTY OVERVIEW

The Shoppes at North Pointe has a Fully Equipped Restaurant with drive thru available along with two other retail spaces with exposure at one of the busiest intersections on Memorial, located near the north west corner of N May Ave & W Memorial Rd.

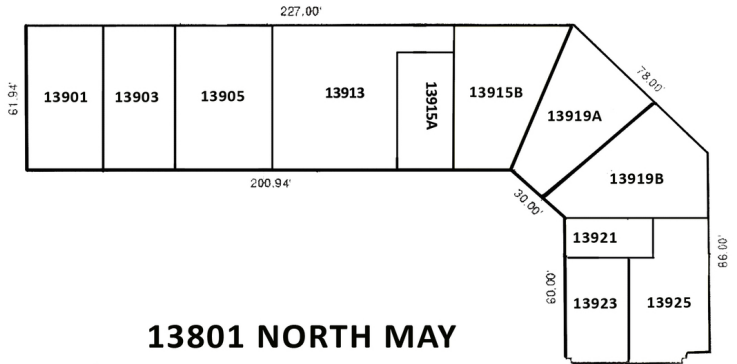
The Memorial Corridor is a magnet for corporate business, containing over 1.5 million square feet of office space, with over half being Class A properties. A vast medical office community is anchored by some of the most advanced hospitals in the region. The businesses in the corridor are supported by over 1,200 hotel rooms and suites. New big box retailers in the area include Von Maur and Dick's Sporting Goods.

SPACES	LEASE RATE	SPACE SIZE
13833	\$20.00 SF/yr	2,150 SF

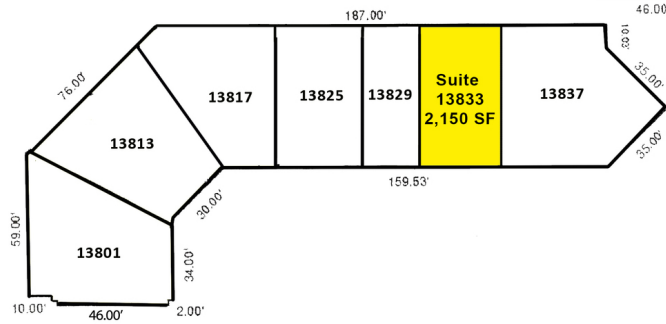
**GEORGE WILLIAMS, CCIM**  
405.239.1270  
gwilliams@pricedwards.com  
pricedwards.com

## 13901 NORTH MAY

Tenant	Suite	Square Footage
City National Bank	13801	3,156
Salon Exclusive	13813	2,845
Bud Bar	13817	1,956
Nails By Helen	13825	2,400
Lifestar Home Care	13829	1,200
VACANT	13833	2,150
Jimmy's Egg	13837	3,230
American Cleaners	13901	1,800
Silver Accents	13903	1,800
Nhinja Sushi	13905	2,400
Rinse Salon Suites	13913	3,614
Cell Phone Fix	13915A	816
Rinse Salon & Extension Bar	13915B	2,410
Quail Tag Agency	13919A	1,669
Iron Horse Post & Parcel	13919B	1,521
Kicktrip	13921	1,359
US Insurance	13923	895
Port of Peri Peri	13925	2,086

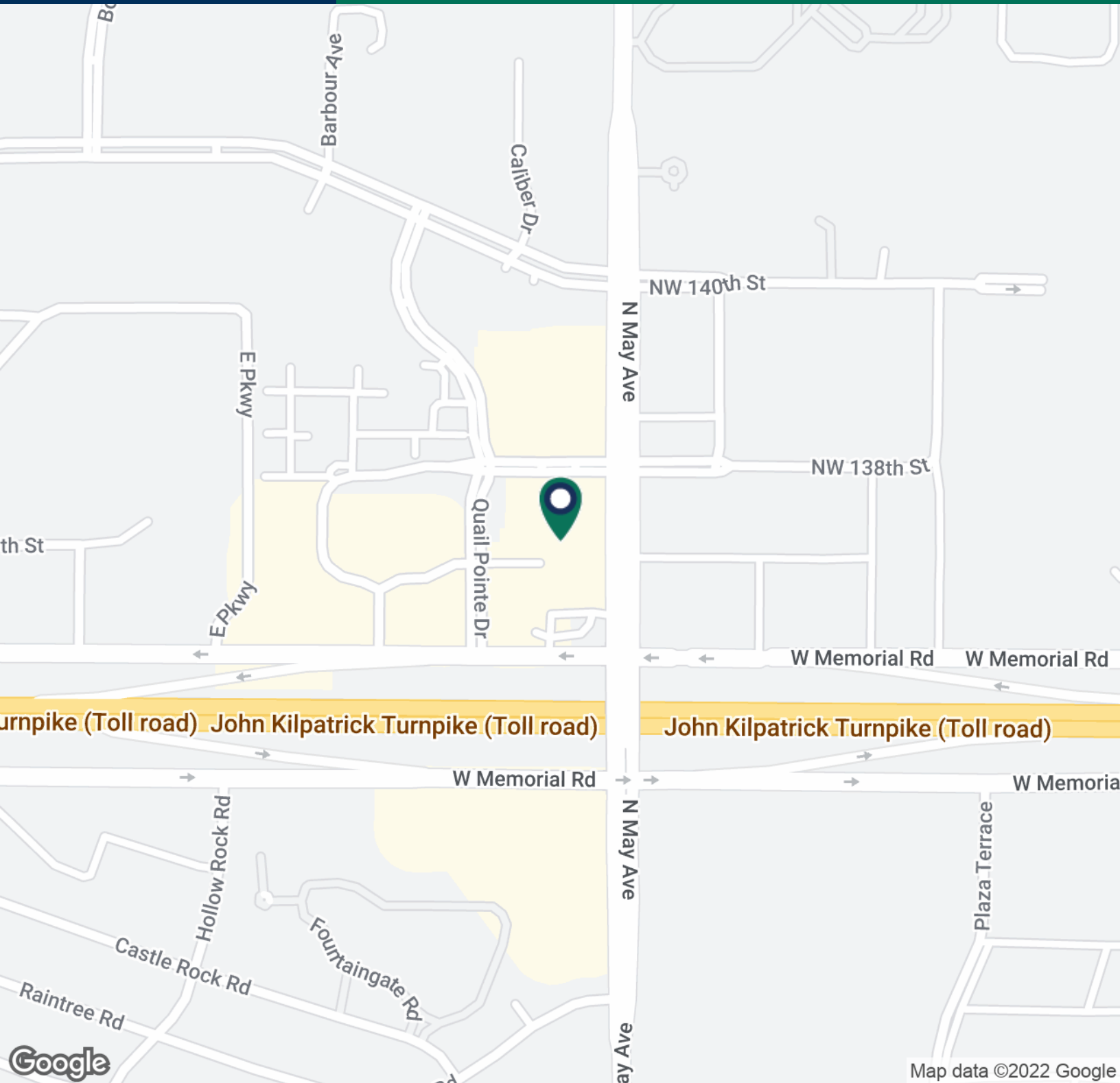


## 13801 NORTH MAY



# The Shoppes At North Pointe

13801/13901 N. May Avenue, Oklahoma City, OK 73134

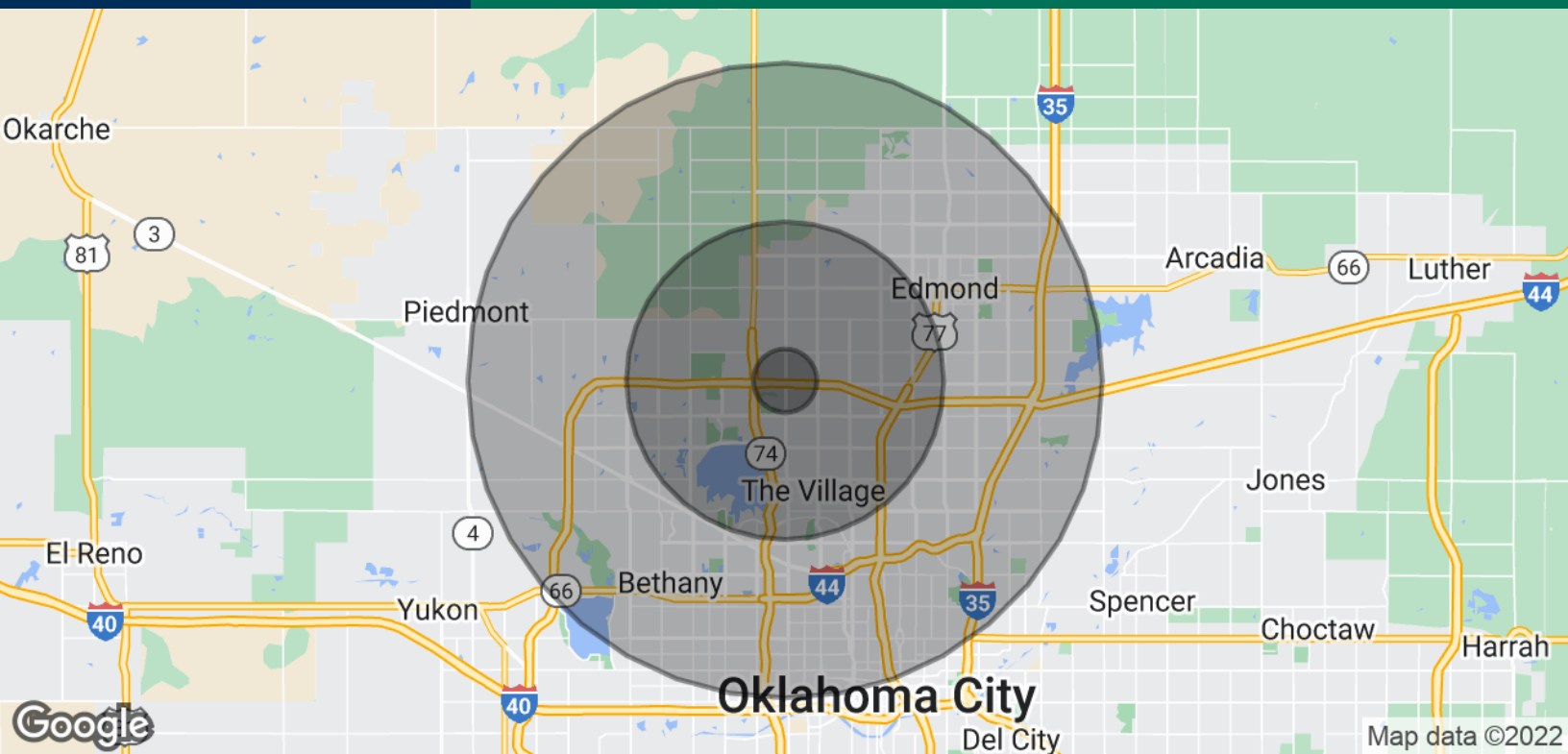


**GEORGE WILLIAMS, CCIM**  
405.239.1270  
gwilliams@pricedwards.com  
pricedwards.com



# The Shoppes At North Pointe

13801/13901 N. May Avenue, Oklahoma City, OK 73134



**POPULATION**

	<b>1 MILE</b>	<b>5 MILES</b>	<b>10 MILES</b>
Total Population	7,631	139,152	482,646
Average age	32.8	36.3	35.8
Average age (Male)	31.9	34.7	34.4
Average age (Female)	34.4	37.4	36.9

**HOUSEHOLDS & INCOME**

	<b>1 MILE</b>	<b>5 MILES</b>	<b>10 MILES</b>
Total households	3,940	59,372	199,040
# of persons per HH	1.9	2.3	2.4
Average HH income	\$63,829	\$81,821	\$71,316
Average house value	\$176,396	\$199,922	\$187,302

*\* Demographic data derived from 2020 ACS - US Census*

09152022

**GEORGE WILLIAMS, CCIM**  
405.239.1270  
gwilliams@pricedwards.com  
pricedwards.com