



## OFFERING SUMMARY

Building Size:	5,270 SF
Lease Rate:	\$17.00 psf NNN
Available SF:	1,035 - 1,073 SF
Lot Size:	1 Acres
Year Built:	2018

011422

## PROPERTY OVERVIEW

This nicely designed strip center is strategically located in front of the Wal-Mart Super Center on the main corridor - Highway 81 entering and exiting Kingfisher.

100 W Starlight Drive Suite #5 - Former State Farm office available with direct frontage to HWY 81 and Shadow anchored by Wal-Mart Super Center. Space is in move-in ready condition with restroom, reception and office space available, however can be converted to any use. Monument sign available.

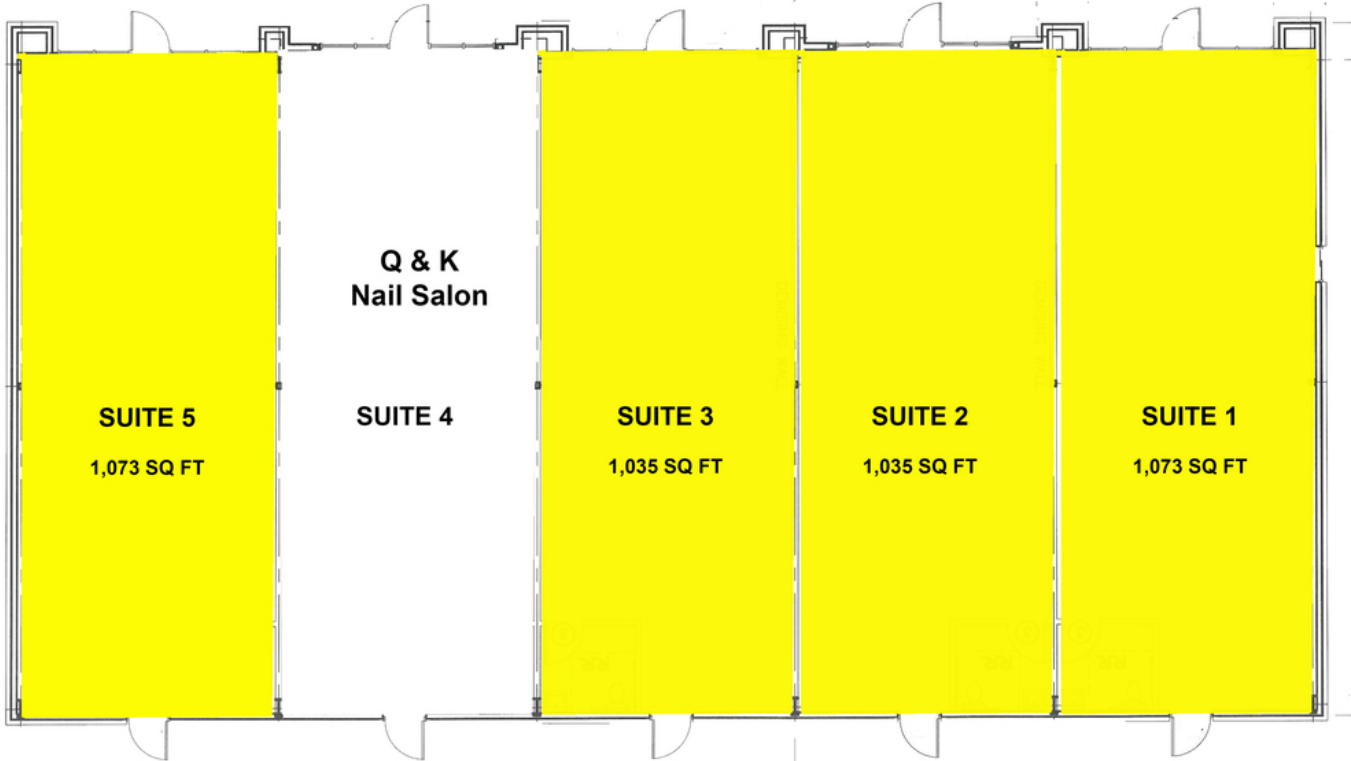
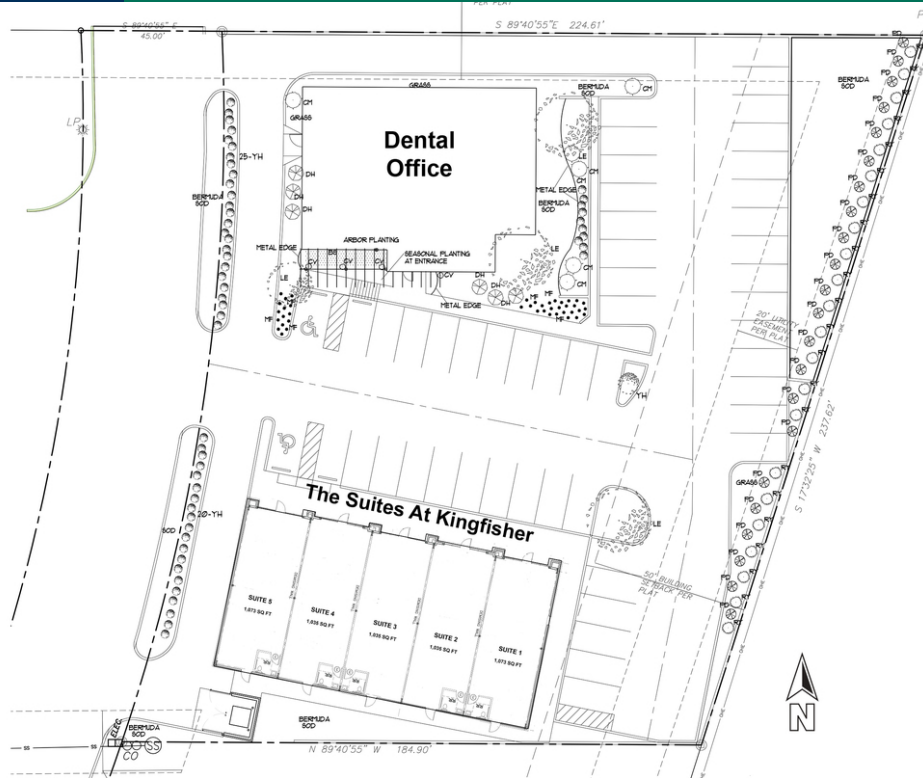
Call to schedule a tour!

Note: \*Suite 1 - end cap has drive-thru capabilities

SPACES	LEASE RATE	SPACE SIZE	PLACEMENT
102 Starlite Dr, Suite 1	\$17.00 SF/yr	1,073 SF	end cap-drive thru
102 Starlite Dr, Suite 2	\$17.00 SF/yr	1,035 SF	inline
102 Starlite Dr, Suite 3	\$17.00 SF/yr	1,035 SF	inline
102 Starlite Dr, Suite 5	\$17.00 SF/yr	1,073 SF	end cap

**ROSHA WOOD**  
405.239.1219  
rwood@priceedwards.com  
priceedwards.com

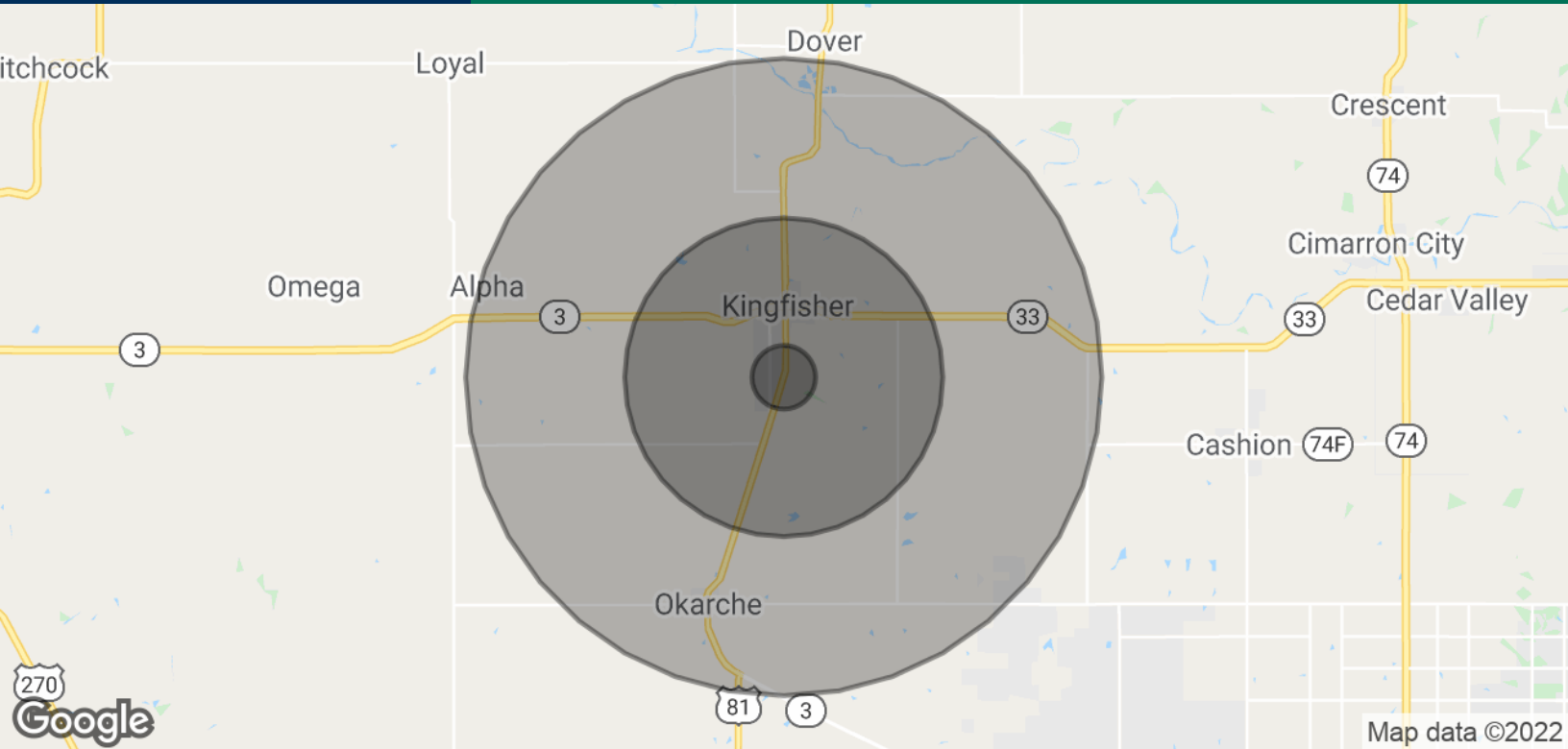
**The Suites at Kingfisher**  
102 Starlite Dr, Kingfisher, OK 73750



**ROSHA WOOD**  
405.239.1219  
rwood@pricedwards.com  
pricedwards.com

# The Suites at Kingfisher

102 Starlite Dr, Kingfisher, OK 73750



## POPULATION

	1 MILE	5 MILES	10 MILES
Total Population	516	6,689	10,368
Average Age	40.0	40.0	39.8
Average Age (Male)	40.6	40.5	40.2
Average Age (Female)	39.4	39.4	39.3

## HOUSEHOLDS & INCOME

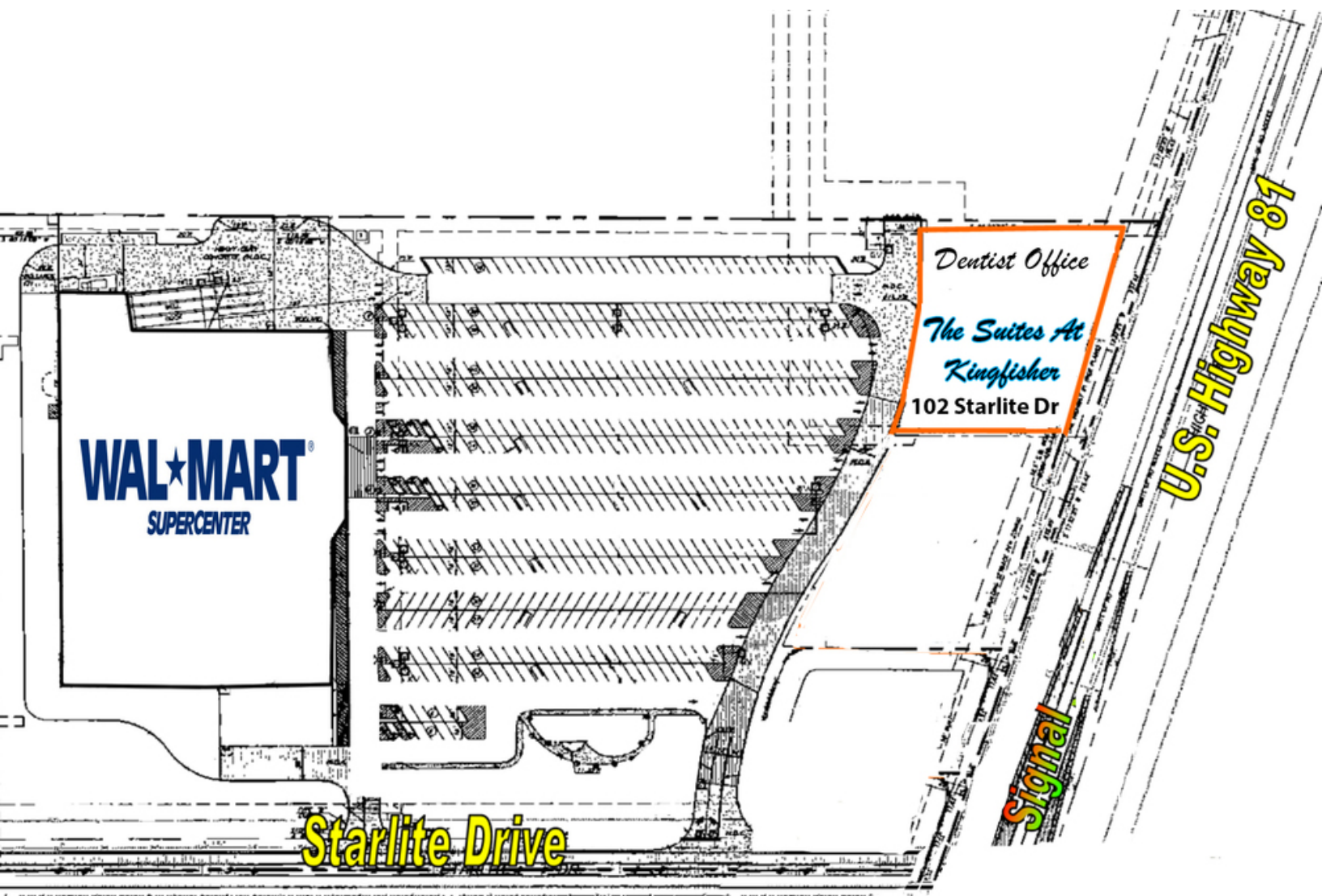
	1 MILE	5 MILES	10 MILES
Total Households	191	2,486	3,862
# of Persons per HH	2.7	2.7	2.7
Average HH Income	\$58,945	\$59,228	\$63,509
Average House Value	\$126,937	\$127,857	\$138,359

\* Demographic data derived from 2010 US Census

**ROSHA WOOD**  
405.239.1219  
rwood@pricedwards.com  
pricedwards.com

# The Suites at Kingfisher

102 Starlite Dr, Kingfisher, OK 73750



ROSHA WOOD  
405.239.1219  
rwood@pricedwards.com  
pricedwards.com