

PRIME INTERSTATE 40 RETAIL OPPORTUNITY | MIDWEST CITY TINKER DIAGONAL ST & WARREN RD, MIDWEST CITY, OK 73110

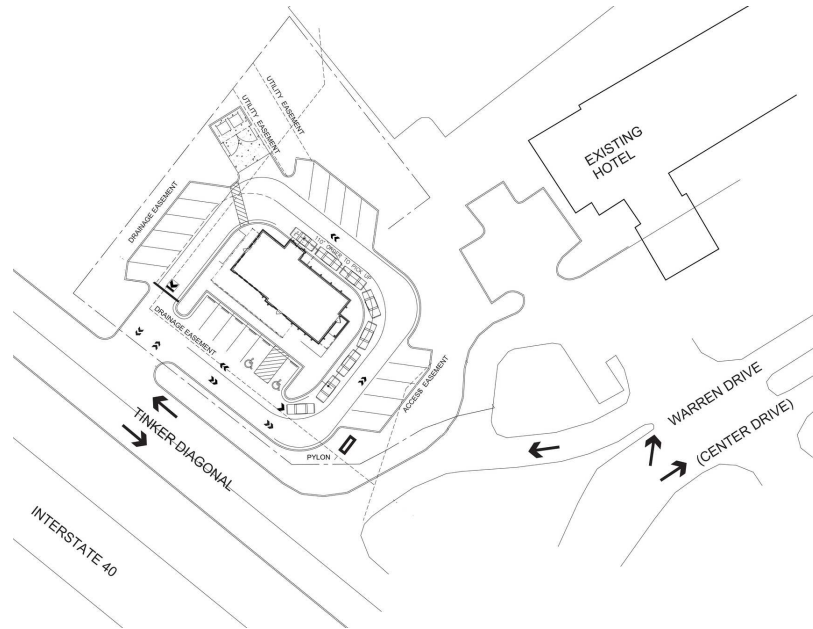


**BRANDY RUNDEL**  
retail leasing associate  
brundel@priceedwards.com  
O: 405.990.5337 C: 405.990.5337

**MONICA WITTRICK**  
leasing & sales associate  
mwittrock@priceedwards.com  
O: 405.843.7474

**Lease Rate**  
\$85,000.00 per year (Ground)





## PROPERTY DESCRIPTION

Available for ground lease, this exceptional site sits at the entrance to Midwest City's premier entertainment and retail corridor. With high visibility off Interstate 40, the property benefits from strong traffic counts and proximity to national retailers including The Home Depot, Walmart Supercenter, Starbucks, Chick-fil-A, and multiple hotels.

This site is just northwest of Tinker Air Force Base, Oklahoma's largest single-site employer, with over 26,000 personnel and an annual economic impact exceeding \$3.2 billion. The base plays a crucial role in the local economy, supporting a vast network of businesses and services.

Nearby, Rose State College serves approximately 7,420 students, providing workforce training and higher education that fuels local business growth. The area's dynamic mix of retail, hospitality, and education makes this an ideal location for development.

## PROPERTY HIGHLIGHTS

- Interstate frontage and signage visibility
- Site is graded
- All utilities installed

## OFFERING SUMMARY

<b>Lease Rate:</b>	\$85,000.00 per year (Ground)
<b>Available SF:</b>	32,361 SF
<b>Lot Size:</b>	32,361 SF

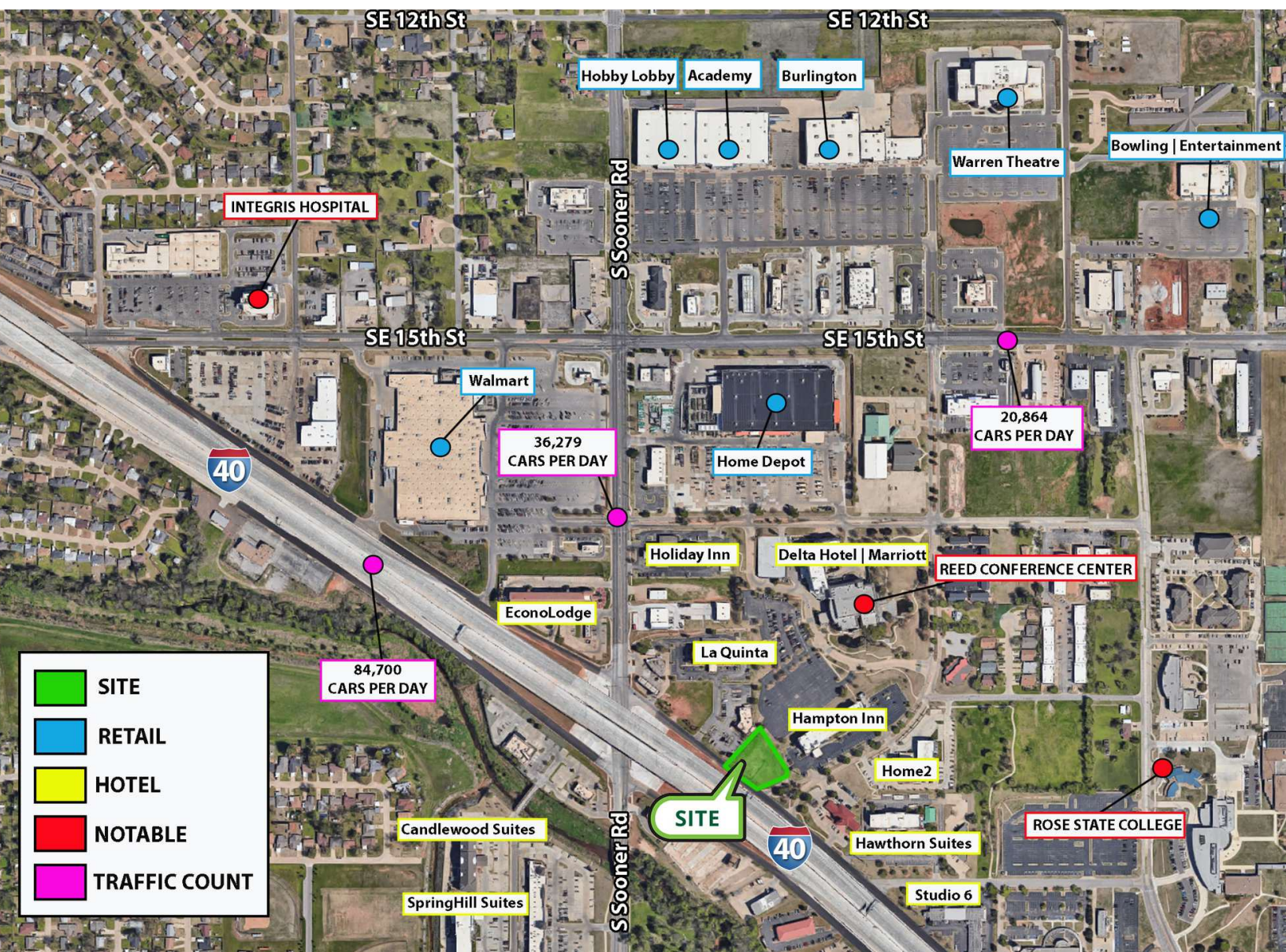
### BRANDY RUNDEL

brundel@priceedwards.com  
O: 405.990.5337 C: 405.990.5337

### MONICA WITTRICK

mwittrock@priceedwards.com  
O: 405.843.7474





**BRANDY RUNDEL**

brundel@pricedwards.com

O: 405.990.5337 C: 405.990.5337

**MONICA WITTRICK**

mwittrock@pricedwards.com

O: 405.843.7474



PRIME INTERSTATE 40 RETAIL OPPORTUNITY | MIDWEST CITY TINKER DIAGONAL ST & WARREN RD, MIDWEST CITY, OK 73110



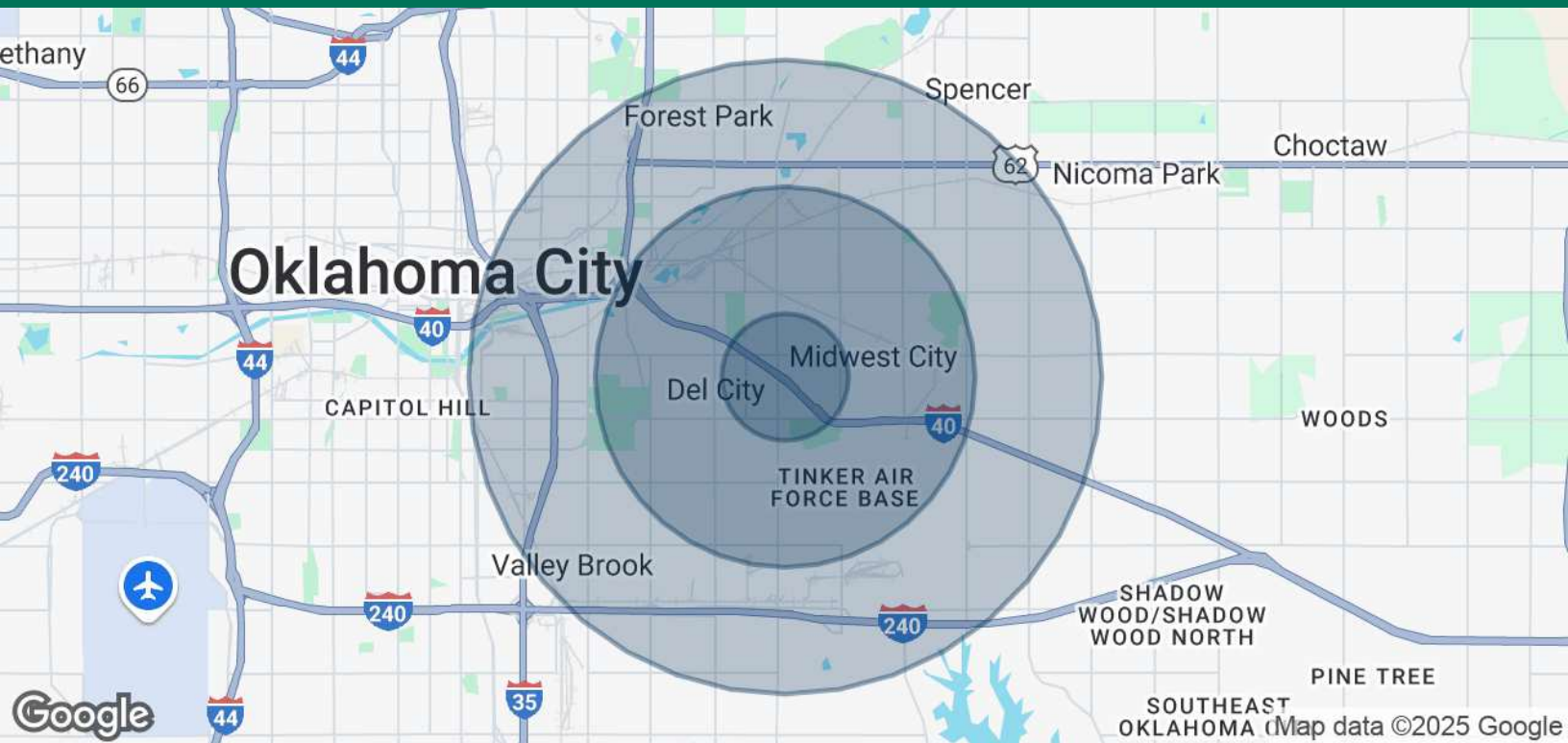
## BRANDY RUNDEL

brundel@priceedwards.com  
O: 405.990.5337 C: 405.990.5337

## MONICA WITTRICK

mwittrock@priceedwards.com  
O: 405.843.7474





## POPULATION

### Total Population

## 1 MILE

## 3 MILES

## 5 MILES

### Average Age

### Average Age (Male)

### Average Age (Female)

8,600

39

37

41

65,280

38

36

39

127,068

38

37

39

## HOUSEHOLDS & INCOME

### Total Households

### # of Persons per HH

### Average HH Income

### Average House Value

## 1 MILE

## 3 MILES

## 5 MILES

3,657

2.4

\$52,851

\$131,423

26,477

2.5

\$63,363

\$153,758

51,101

2.5

\$66,086

\$170,790

Demographics data derived from AlphaMap

04042025

## BRANDY RUNDEL

brundel@priceedwards.com

O: 405.990.5337 C: 405.990.5337

## MONICA WITTRICK

mwittrock@priceedwards.com

O: 405.843.7474