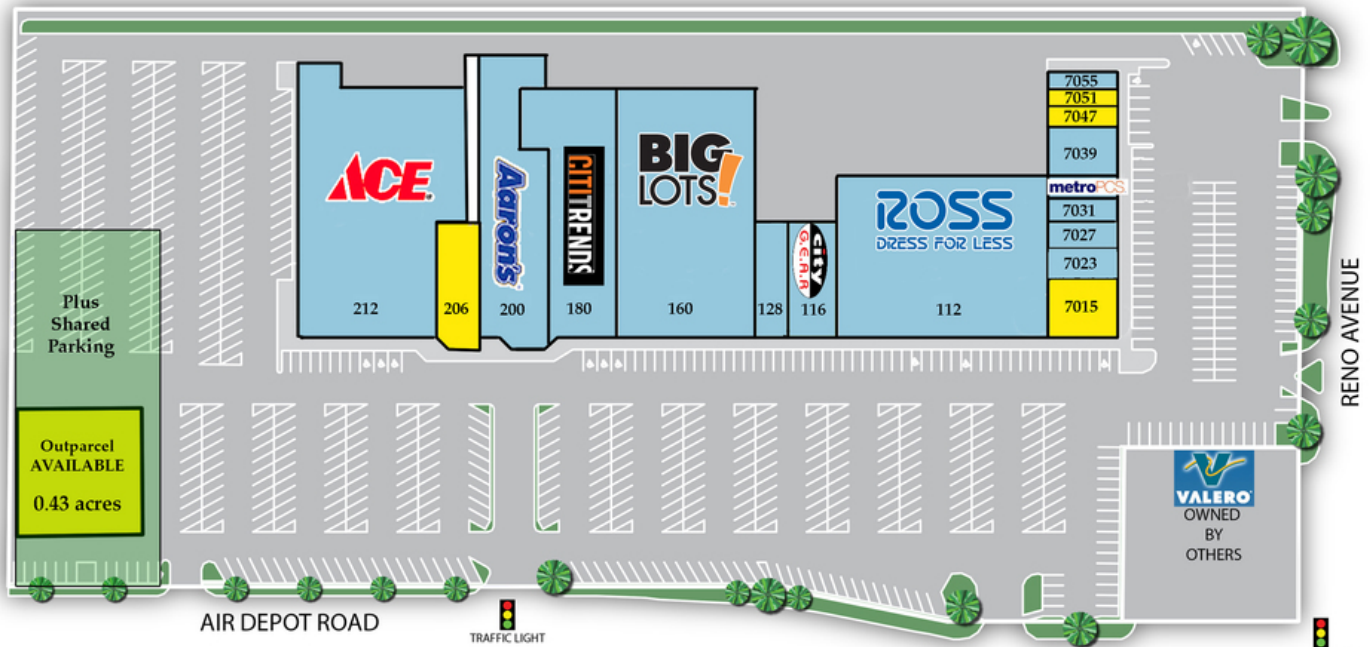


TOWN & COUNTRY CENTER

7015 E Reno Ave, Midwest City, OK 73110



RETAIL SPACE NOW AVAILABLE

Available SF: 900 - 4,000 SF

| | |
|------------|----------|
| Suite 206 | 4,000 SF |
| Suite 7015 | 3,000 SF |
| Suite 7047 | 1,136 SF |
| Suite 7051 | 900 SF |

Lease Rate: \$9.50 SF/yr - \$16.00 SF/yr (NNN)

Building Size: 131,431 SF

Cross Streets: S Air Depot & E Reno Ave

Traffic Counts: Air Depot - N/S - 14,333 / 24,618
Reno - E/W - 22,121 / 19,247

Town & Country Shopping Center is located in the heart of Midwest City at Reno and Air Depot.

Retailers get the benefit of not only the growth of the economic market (Tinker Air Force Base, Boeing, etc) but also strong co-tenancy including Ross Dress For Less, Big Lots, Westlake, Aarons and more.

Tenants who are great draws and recent to Center: Ross Dress For Less, City Gear

Tenants with continued strong sales and recent renewals include: Aarons, Big Lots

Located within a mile of the new Winco, Alliance Health Hospital and Midwest City "Civic District" (City Hall, Community Center, Library, Police and Fire Department).

• Pad Site available for Build-To-Suit or Ground Lease

02172020

KARLEEN KRYWUCKI

Retail Specialist
kkrywucki@priceedwards.com
405.843.7474
210 Park Ave, Suite 700, Oklahoma City, OK 73102
priceedwards.com

JACOB SIMON

Retail Specialist
jsimon@priceedwards.com
405.843.7474
210 Park Ave, Suite 700, Oklahoma City, OK 73102
priceedwards.com

TOWN & COUNTRY CENTER

7015 E Reno Ave, Midwest City, OK 73110



KARLEEN KRYWUCKI

Retail Specialist

kkrywucki@priceedwards.com

405.843.7474

210 Park Ave, Suite 700, Oklahoma City, OK 73102

priceedwards.com

JACOB SIMON

Retail Specialist

jsimon@priceedwards.com

405.843.7474

210 Park Ave, Suite 700, Oklahoma City, OK 73102

priceedwards.com

TOWN & COUNTRY CENTER

7015 E Reno Ave, Midwest City, OK 73110



SUMMARY PROFILE

2000-2010 Census, 2017 Estimates with 2022 Projections

Calculated using Weighted Block Centroid from Block Groups

Price Edwards & Company

January 2018

Lat/Lon: 35.4647/-97.4052



| 7015 E Reno Ave | | 1 mi radius | 2 mi radius | 3 mi radius | 5 mi radius |
|------------------------|---|-------------|-------------|-------------|-------------|
| Midwest City, OK 73110 | | | | | |
| POPULATION | 2017 Estimated Population | 13,561 | 36,910 | 62,448 | 122,017 |
| | 2022 Projected Population | 13,931 | 38,309 | 64,937 | 128,007 |
| | 2010 Census Population | 13,174 | 35,473 | 59,473 | 114,510 |
| | 2000 Census Population | 12,616 | 36,609 | 62,006 | 116,654 |
| | Projected Annual Growth 2017 to 2022 | 0.5% | 0.8% | 0.8% | 1.0% |
| | Historical Annual Growth 2000 to 2017 | 0.4% | - | - | 0.3% |
| | 2017 Median Age | 36.1 | 34 | 34.4 | 35.1 |
| HOUSEHOLDS | 2017 Estimated Households | 5,902 | 16,022 | 26,040 | 49,186 |
| | 2022 Projected Households | 6,151 | 16,882 | 27,510 | 52,511 |
| | 2010 Census Households | 5,706 | 15,339 | 24,827 | 46,249 |
| | 2000 Census Households | 5,433 | 15,777 | 25,619 | 46,490 |
| | Projected Annual Growth 2017 to 2022 | 0.8% | 1.1% | 1.1% | 1.4% |
| | Historical Annual Growth 2000 to 2017 | 0.5% | 0.1% | 0.1% | 0.3% |
| RACE AND ETHNICITY | 2017 Estimated White | 68.4% | 60.4% | 60.2% | 54.0% |
| | 2017 Estimated Black or African American | 15.0% | 23.3% | 23.6% | 29.6% |
| | 2017 Estimated Asian or Pacific Islander | 3.2% | 2.5% | 2.4% | 2.7% |
| | 2017 Estimated American Indian or Native Alaskan | 3.4% | 3.3% | 3.1% | 2.9% |
| | 2017 Estimated Other Races | 10.0% | 10.5% | 10.6% | 10.8% |
| | 2017 Estimated Hispanic | 8.7% | 8.3% | 8.5% | 8.7% |
| INCOME | 2017 Estimated Average Household Income | \$58,272 | \$52,291 | \$53,955 | \$54,583 |
| | 2017 Estimated Median Household Income | \$49,762 | \$43,087 | \$45,824 | \$46,569 |
| | 2017 Estimated Per Capita Income | \$25,387 | \$22,762 | \$22,550 | \$22,090 |
| EDUCATION (AGE 25+) | 2017 Estimated Elementary (Grade Level 0 to 8) | 2.5% | 3.0% | 3.0% | 3.2% |
| | 2017 Estimated Some High School (Grade Level 9 to 11) | 5.5% | 8.0% | 8.6% | 9.2% |
| | 2017 Estimated High School Graduate | 29.8% | 31.4% | 32.3% | 32.3% |
| | 2017 Estimated Some College | 30.4% | 30.5% | 29.6% | 27.9% |
| | 2017 Estimated Associates Degree Only | 10.1% | 8.8% | 8.7% | 8.7% |
| | 2017 Estimated Bachelors Degree Only | 16.0% | 13.2% | 12.6% | 12.6% |
| | 2017 Estimated Graduate Degree | 5.7% | 5.2% | 5.2% | 6.1% |
| BUSINESS | 2017 Estimated Total Businesses | 459 | 1,459 | 2,506 | 4,194 |
| | 2017 Estimated Total Employees | 4,896 | 19,321 | 28,509 | 52,349 |
| | 2017 Estimated Employee Population per Business | 10.7 | 13.2 | 11.4 | 12.5 |
| | 2017 Estimated Residential Population per Business | 29.5 | 25.3 | 24.9 | 29.1 |

RS1
This report was produced using data from private and government sources deemed to be reliable. The information herein is provided without representation or warranty.

KARLEEN KRYWUCKI

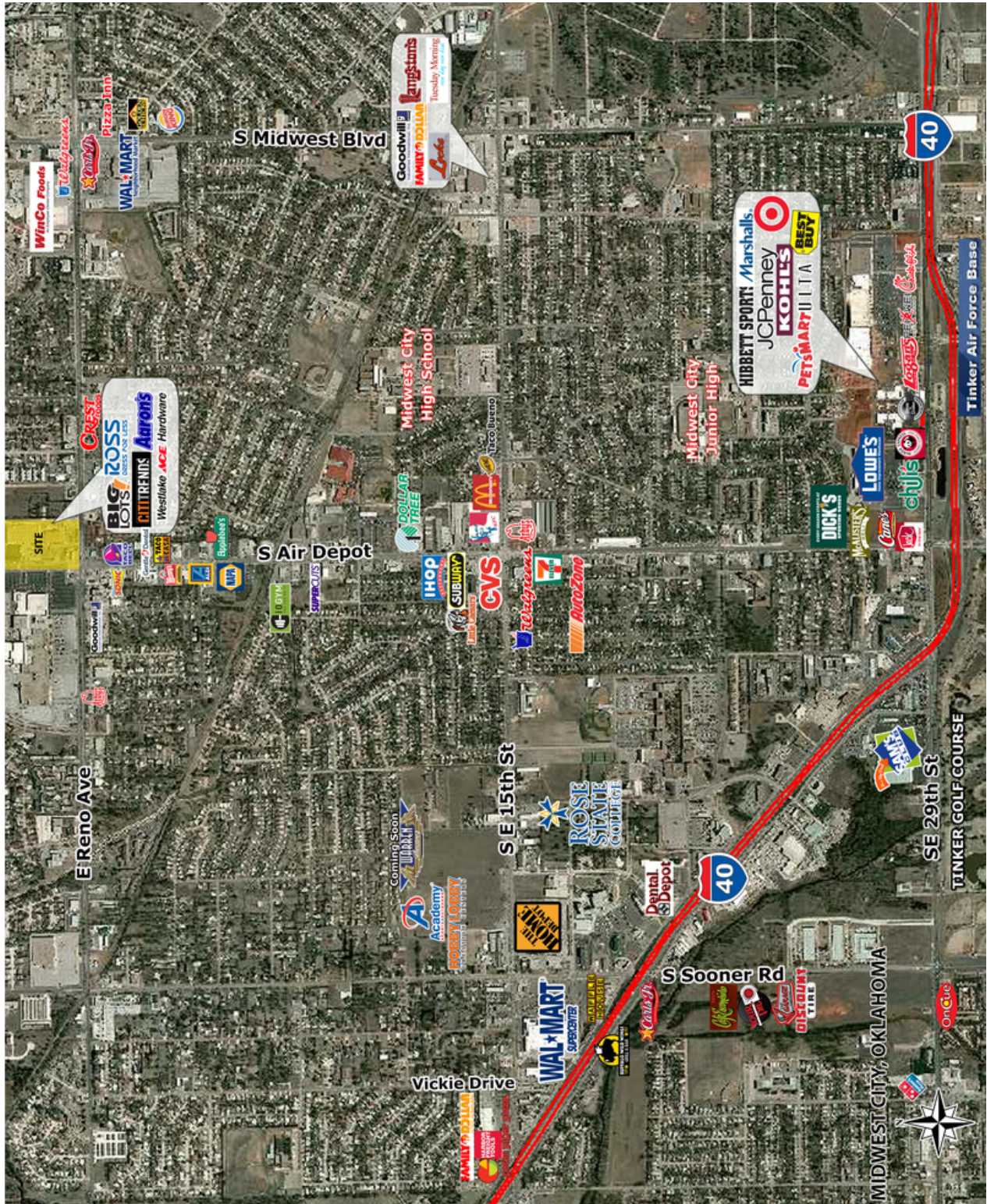
Retail Specialist
kkrywucki@priceedwards.com
405.843.7474
210 Park Ave, Suite 700, Oklahoma City, OK 73102
priceedwards.com

JACOB SIMON

Retail Specialist
jsimon@priceedwards.com
405.843.7474
210 Park Ave, Suite 700, Oklahoma City, OK 73102
priceedwards.com

TOWN & COUNTRY CENTER

7015 E Reno Ave, Midwest City, OK 73110



KARLEEN KRYWUCKI

Retail Specialist

kkrywucki@priceedwards.com

405.843.7474

210 Park Ave, Suite 700, Oklahoma City, OK 73102

priceedwards.com

JACOB SIMON

Retail Specialist

jsimon@priceedwards.com

405.843.7474

210 Park Ave, Suite 700, Oklahoma City, OK 73102

priceedwards.com