



## OFFERING SUMMARY

Lease Rate:	\$19.50 SF/yr (NNN)
Available SF:	701 SF
Use:	Retail
Market:	Downtown OKC
Submarket:	Midtown

## SMALL RETAIL NOW AVAILABLE

Quaint retail on Midtown's most walkable retail street. This suite features exposed brick, move-in ready retail features, sign opportunity and convenient parking.

Neighbors include chirps & cheers, Plant, McNellie's, Insomnia Cookies and the Ambassador Hotel.

Parking is available for employees and customers in an adjacent, free lot.

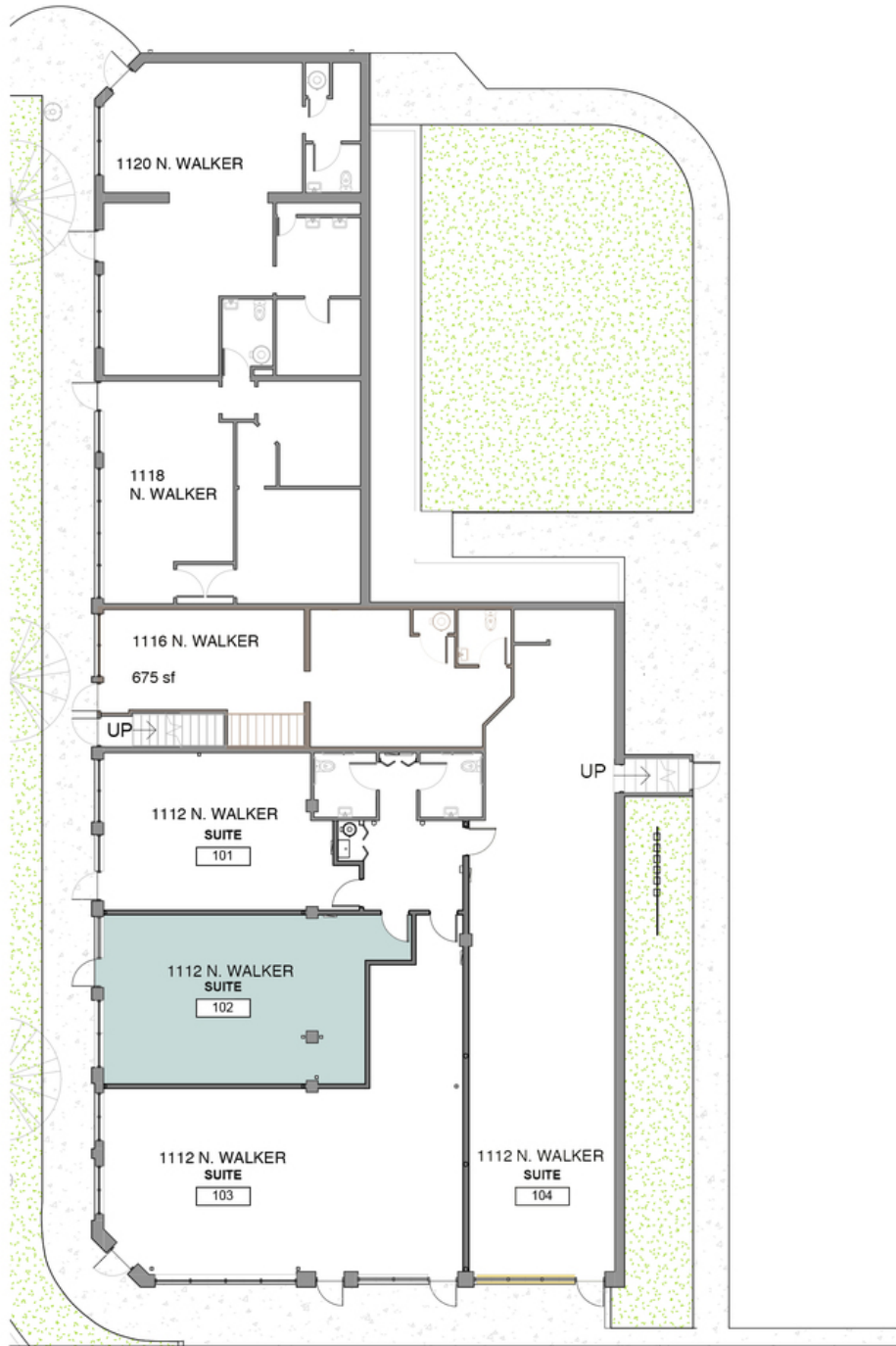
## LOCATION OVERVIEW

Located in the Walker Shops building in Midtown, between 10th and 11th on Walker Ave.

**ALLISON BARTA BAILEY**  
405.239.1245  
abailey@pricedwards.com  
pricedwards.com

# Walker Shops

1112 N Walker #102, Oklahoma City, OK 73103



GROUND LEVEL FLOOR PLAN: 1/16" = 1'-0"  
1112 through 1120 N. Walker Ave

**ALLISON BARTA BAILEY**  
405.239.1245  
abailey@priceedwards.com  
priceedwards.com