



RETAIL SPACE NOW AVAILABLE

| | |
|----------------|---|
| Lease Rate: | \$12.00 - 18.00 SF/yr (NNN) |
| Available SF: | 1,500 - 29,025 SF |
| Building Size: | 316,351 SF |
| Market: | South |
| Cross Streets: | SW 74th St & S Pennsylvania Ave |
| Pad Site: | Separate flyer- 50,000 SF 31821 |

PROPERTY OVERVIEW

Located at the northwest corner of I-240 and South Pennsylvania Ave, Walnut Square Shopping Center is highly visible from I-240, the east/west corridor of South Oklahoma City.

National retail located along this five mile stretch include Hobby Lobby, Conn's, Big Lots, Old Navy, Michaels, Marshalls, Ross Dress For Less, Skechers, Lane Bryant, Northern Tool, Lowes, Home Depot, Wal-Mart SuperCenter, Burlington, PetsMart, Dollar Tree, as well as national restaurant chains such as Olive Garden, Outback, Golden Corral, and Hooters. Several smaller retails, office and service users have located in this corridor to establish their presence in the South Oklahoma City market.

EV ERNST
405.843.7474
eernst@priceedwards.com
priceedwards.com

AARON DIEHL
405.843.7474 x255
adiehl@priceedwards.com
priceedwards.com



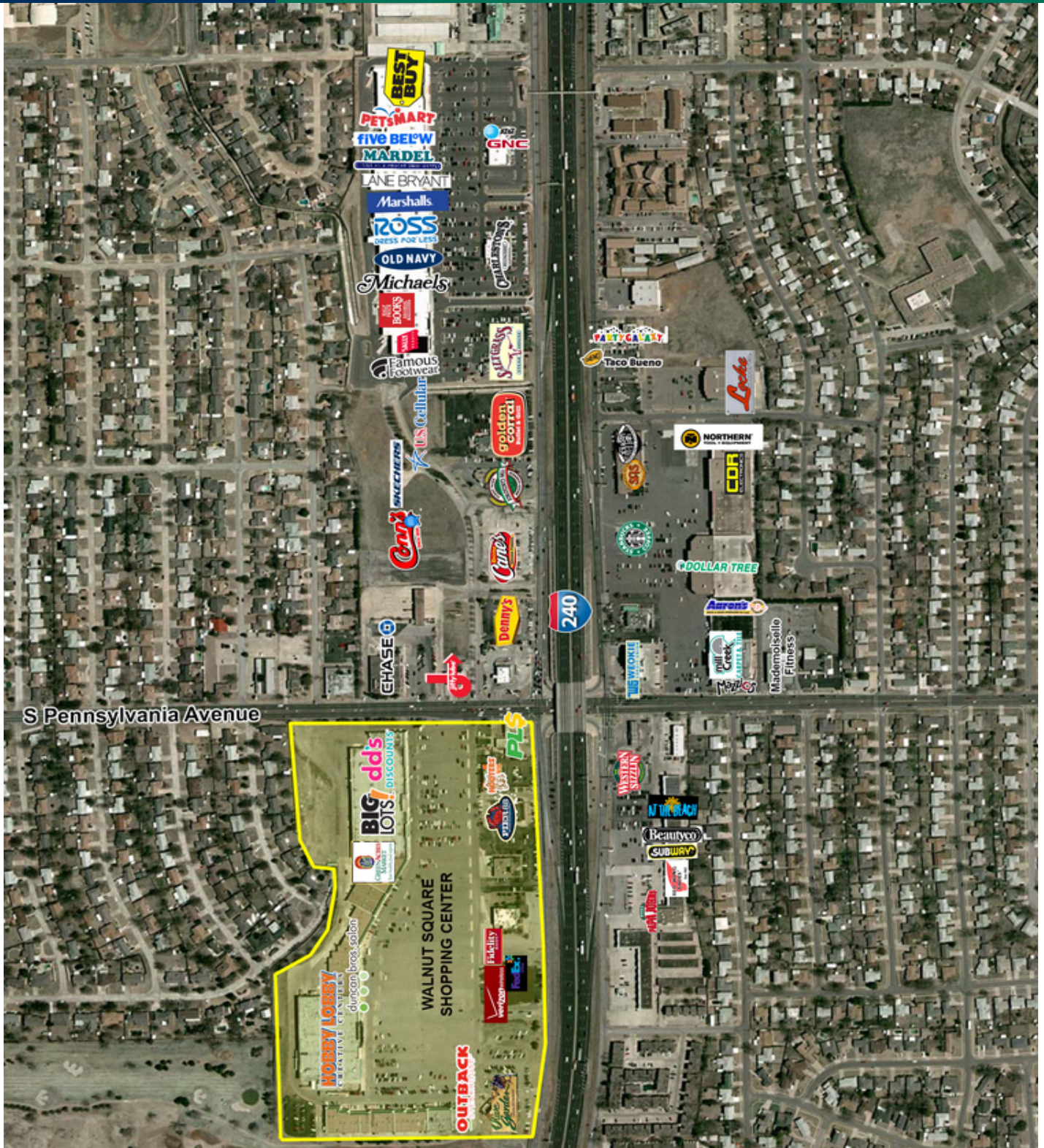
| SUITE | TENANT | SF |
|----------------|------------------------------|---------------|
| 100 | Outback Steakhouse | 5,400 |
| 103 | AVAILABLE | 1,645 |
| 105 | Philly Homa | 4,080 |
| 107 | State Farm Insurance | 2,000 |
| 108 | World Acceptance Corporation | 2,000 |
| 109-125 | AVAILABLE | 29,025 |
| 300-302 | Duncan Brothers School | 8,625 |
| 303 | AVAILABLE | 2,750 |
| 304-306 | State Beauty Supply | 7,950 |
| 307-310 | Our Sister's Closet | 6,420 |
| 311 | AVAILABLE | 1,500 |
| 312 | AVAILABLE | 2,000 |
| 313 | Red River Credit Corporation | 1,875 |
| 314-315 | Dentures and Dental Services | 6,000 |
| 316-317 | AVAILABLE | 6,000 |
| 318 | Atlas Credit | 2,625 |
| 319 | AVAILABLE | 2,625 |

| SUITE | TENANT | SF |
|-----------------|-----------------------------|---------------|
| 320 | Honey Baked Ham | 1,875 |
| 321A | National Guard | 1,000 |
| 321B | Dave's Tax Services | 1,000 |
| 322 | AVAILABLE | 3,346 |
| 2127 | AVAILABLE | 6,627 |
| 2127B | AVAILABLE | 3,556 |
| 7301D | Green Arces Market | 23,900 |
| 7301C | Big Lots | 33,280 |
| 7301B | dd's Discount | 26,250 |
| 7301 | Vintage Stock | 8,100 |
| 7401 | Midfirst Bank | 650 |
| 2205 | Fedex | 6,000 |
| 2207 | Verizon Wireless | 3,000 |
| 2213 | Hobby Lobby | 61,468 |
| 2215 | North Pole Adventure | 23,591 |
| 2201-Pad | PAD SITE - AVAILABLE | 50,000 |
| 2203 | HEBCO, Inc | 12,525 |

EV ERNST
405.843.7474
eernst@priceedwards.com
priceedwards.com

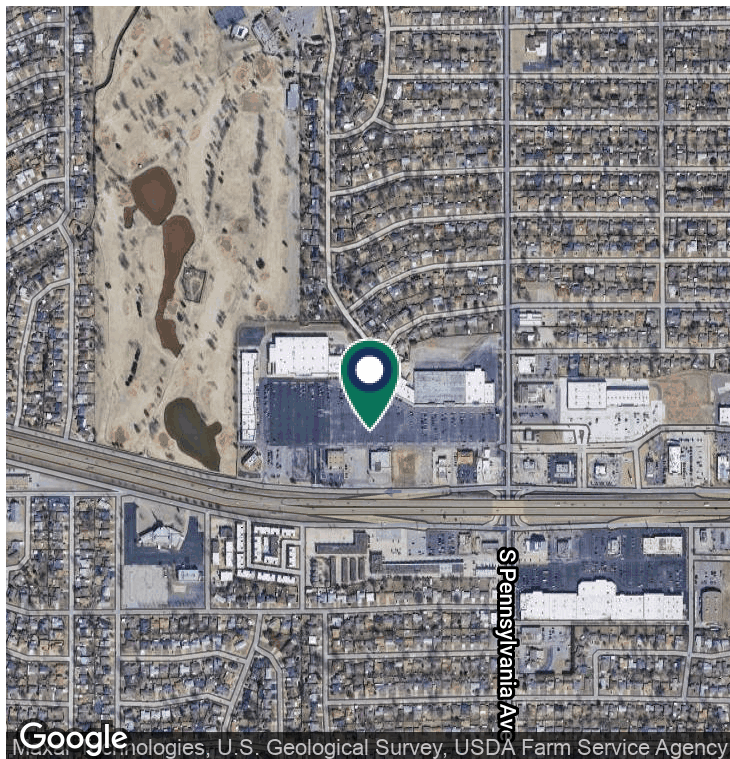
AARON DIEHL
405.843.7474 x255
adiehl@priceedwards.com
priceedwards.com

The information contained herein is from sources deemed reliable. No representation is made to the accuracy herein. Photos herein are the property of their respective owners, and use of them without express written consent of the owner is prohibited.



EV ERNST
405.843.7474
eernst@priceedwards.com
priceedwards.com

AARON DIEHL
405.843.7474 x255
adiehl@priceedwards.com
priceedwards.com



DEMOGRAPHICS (PER 2010 CENSUS; 5 MILES RADIUS)

| | |
|---------------------|-----------|
| Total Population | 200,410 |
| Population Density | 200,410 |
| Median Age | 32.5 |
| Median Age (Male) | 31.6 |
| Median Age (Female) | 33.6 |
| Total Households | 73,657 |
| # of Persons Per HH | 2.7 |
| Average HH Income | \$48,606 |
| Average House Value | \$114,424 |

TRAFFIC COUNTS (PER ACOG)

| | | |
|----------------|-------|---------|
| S Pennsylvania | North | 21,744 |
| S Pennsylvania | South | 25,229 |
| I-240 | East | 107,700 |
| I-240 | West | 98,800 |

EV ERNST
405.843.7474
eernst@priceedwards.com
priceedwards.com

AARON DIEHL
405.843.7474 x255
adiehl@priceedwards.com
priceedwards.com