



### OFFERING SUMMARY

Sale Price:	\$650,000
Building Size:	11,400 SF
Price / SF:	\$57.02
Year Built:	1891

04162020

### PROPERTY OVERVIEW

This Historic Property located in the heart of Downtown Guthrie is available for sale at a great price. The ground floor is currently occupied by Stacy's Place, a great local restaurant who has been there since 2016. This would be a great opportunity for an investor looking to acquire a historical property with some great upside.

### PROPERTY HIGHLIGHTS

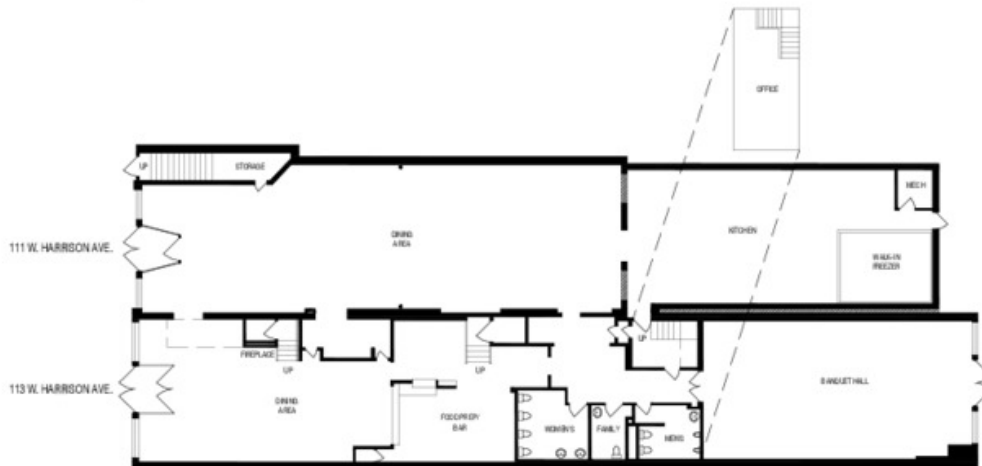
- Great Investment Opportunity
- Upstairs Loft perfect for an owner looking to have an apartment in the heart of downtown Guthrie

**JACOB SIMON**  
405.239.1248  
jsimon@priceedwards.com  
priceedwards.com

**GIRMA MOANING**  
405.239.1244  
gmoaning@priceedwards.com  
priceedwards.com



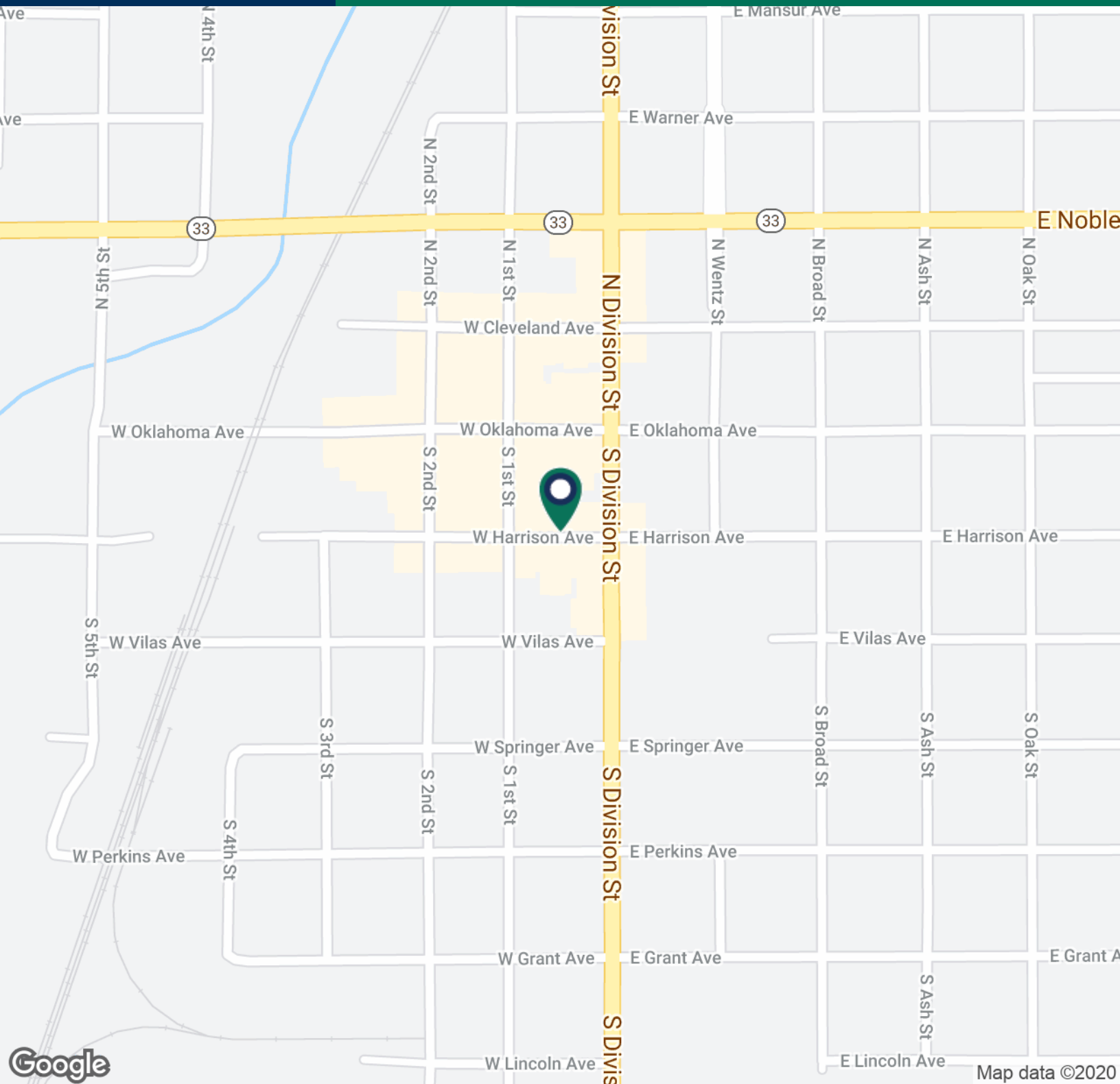
SECOND FLOOR PLAN  
SCALE: 1/4" = 1'-0"



FIRST FLOOR PLAN  
SCALE: 1/4" = 1'-0"

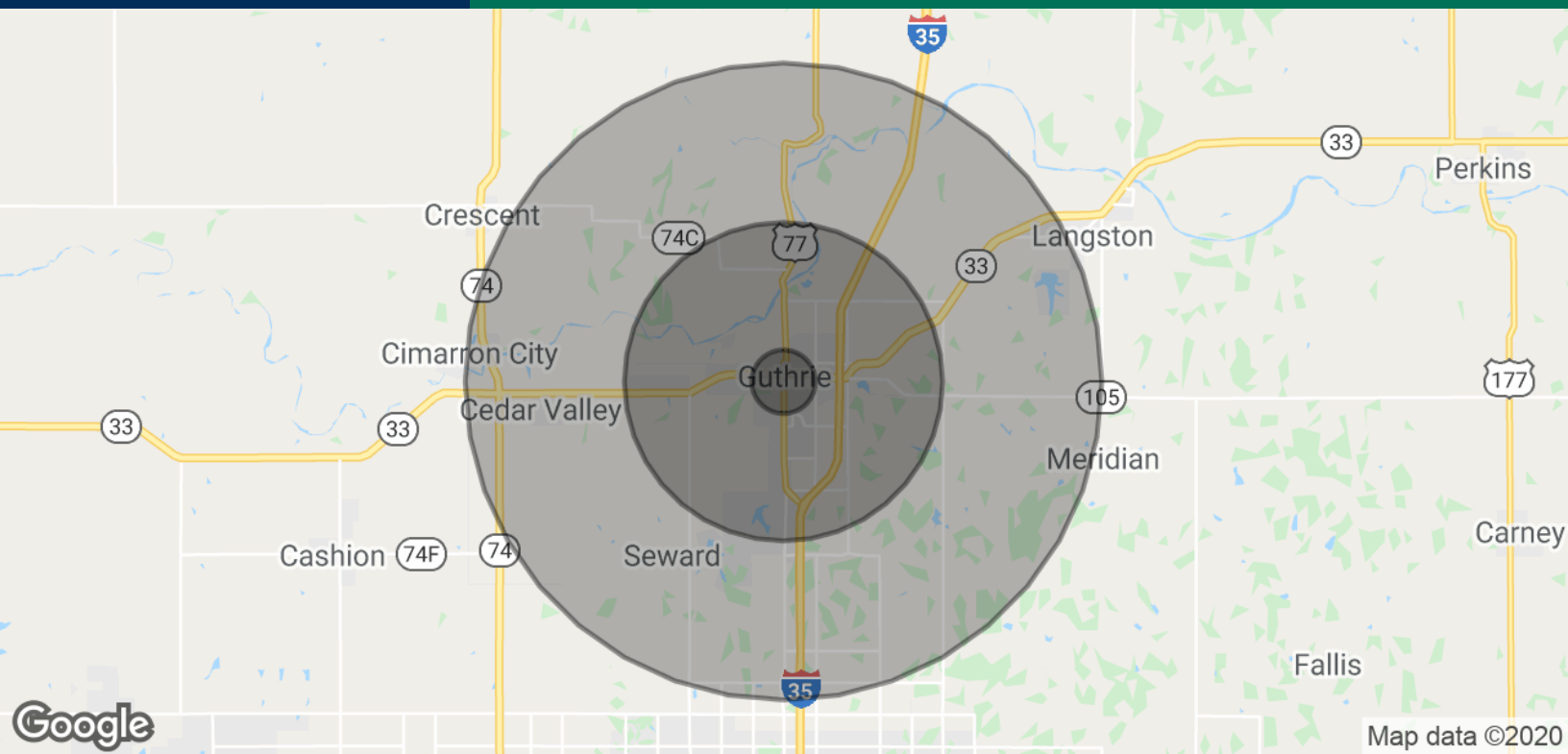
**JACOB SIMON**  
405.239.1248  
jsimon@pricedwards.com  
pricedwards.com

**GIRMA MOANING**  
405.239.1244  
gmoaning@pricedwards.com  
pricedwards.com



**JACOB SIMON**  
405.239.1248  
jsimon@pricedwards.com  
pricedwards.com

**GIRMA MOANING**  
405.239.1244  
gmoaning@pricedwards.com  
pricedwards.com



**POPULATION**

	<b>1 MILE</b>	<b>5 MILES</b>	<b>10 MILES</b>
Total Population	2,044	16,852	32,261
Average age	29.8	32.4	35.9
Average age (Male)	29.2	31.5	35.0
Average age (Female)	30.2	33.7	37.3

**HOUSEHOLDS & INCOME**

	<b>1 MILE</b>	<b>5 MILES</b>	<b>10 MILES</b>
Total households	793	6,245	11,792
# of persons per HH	2.6	2.7	2.7
Average HH income	\$43,402	\$52,369	\$64,359
Average house value		\$137,541	\$129,631

\* Demographic data derived from 2010 US Census

**JACOB SIMON**  
405.239.1248  
jsimon@pricedwards.com  
pricedwards.com

**GIRMA MOANING**  
405.239.1244  
gmoaning@pricedwards.com  
pricedwards.com