

# South OKC Development Land

13654 S. Western Oklahoma City, OK 73170



## LAND SPACE NOW AVAILABLE

<b>Sale Price:</b>	\$1,230,000
<b>Price Per SF:</b>	\$2.97
<b>Lot Size:</b>	9.5 Acres
<b>APN #:</b>	R0055996 and R0055997
<b>Market:</b>	South OKC
<b>Cross Streets:</b>	S.W. 134th and S. Western Ave.

## PROPERTY OVERVIEW

Rare 9.5 acre development site in a growing area of South Oklahoma City. With a total of 57,000 households in the area, there is a need of retail development.. Just a mile from Moore Norman Technology Center and Pioneer Library System Southwest Oklahoma. Four schools surround the property within a mile which include the following: Westmoore High School, Southridge Junior High School, Briarwood Elementary School and Eastlake Elementary.

## LOCATION OVERVIEW

The 9.5 acre site is located just south of S.W. 134th Street on S. Western in Oklahoma City. The area has been expanding development to the south connecting south Oklahoma City to Moore. Home Creations, Oklahoma's largest residential home developer, is under construction with Palermo Place which will include a total of 206 residential homes directly across the street.

For more information please contact:

**PHILLIP MAZAHERI, CCIM**  
pmazaheri@priceedwards.com  
405.239.1221

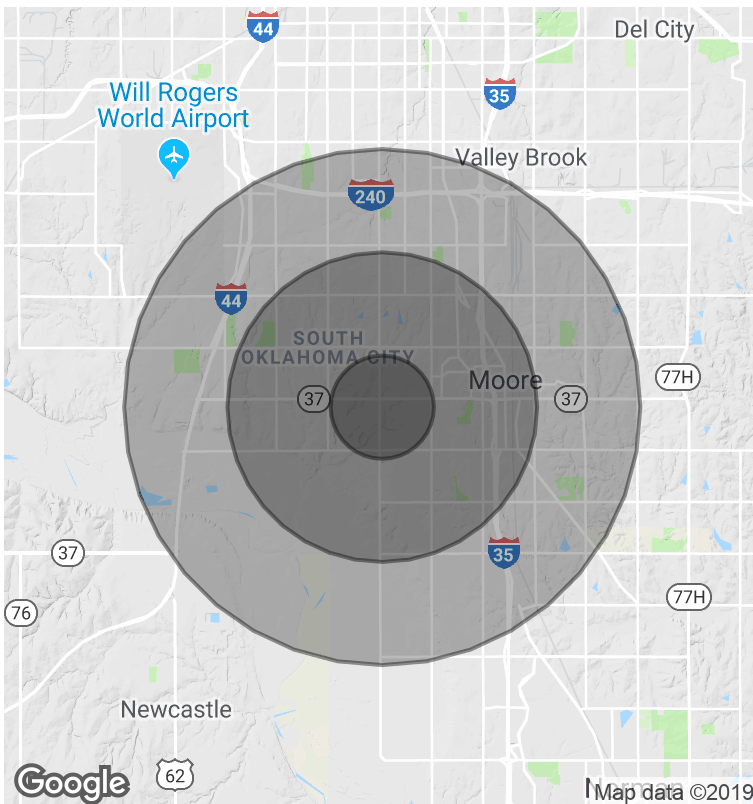
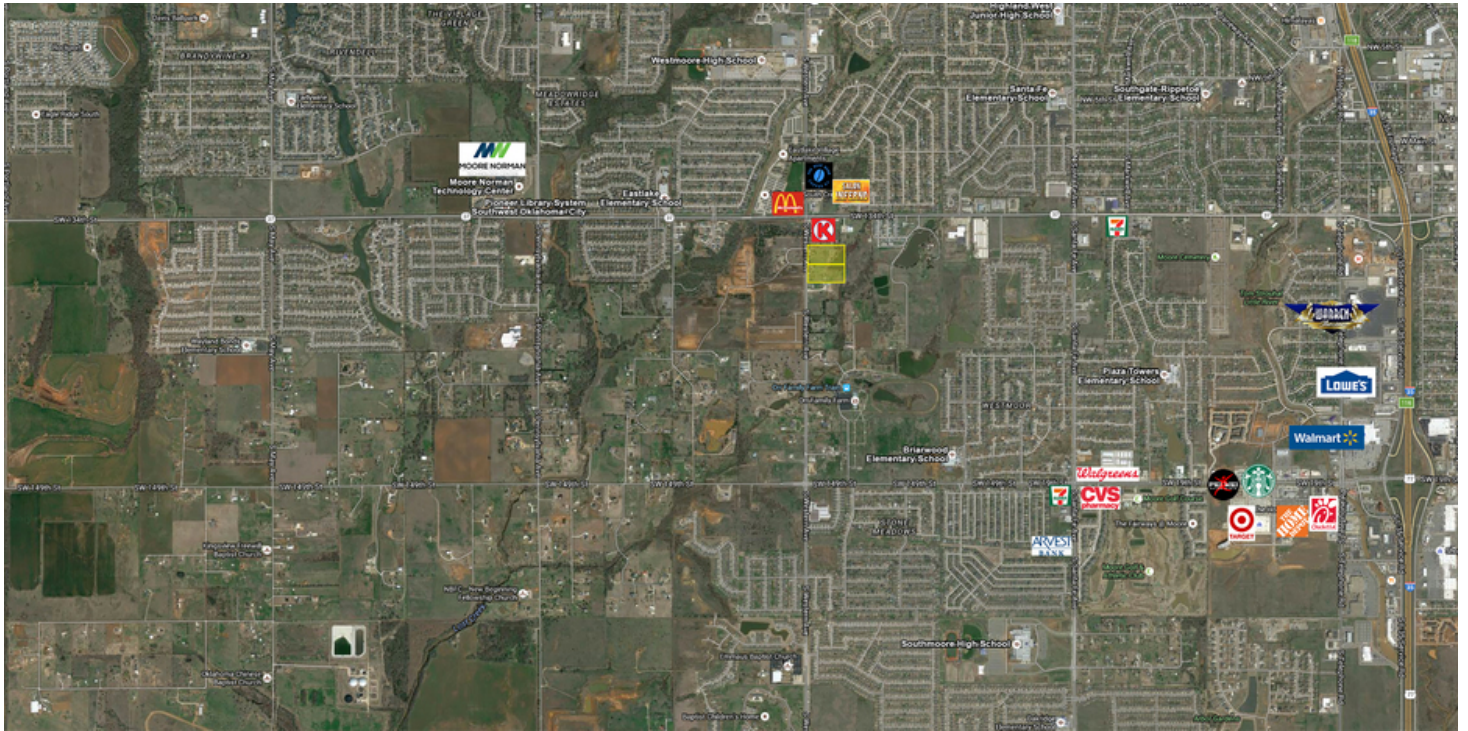
**PAUL RAVENCRAFT**  
pravencraft@priceedwards.com  
405.239.1220

**GEORGE WILLIAMS, CCIM**  
gwilliams@priceedwards.com  
405.239.1270



# South OKC Development Land

13654 S. Western Oklahoma City, OK 73170



### DEMOGRAPHICS (per 2010 Census; 5 Miles Radius)

Total Population	147,891
Population Density	147,891
Median Age	34.6
Median Age (Male)	33.6
Median Age (Female)	35.8
Total Households	56,957
# of Persons Per HH	2.6
Average HH Income	\$66,153
Average House Value	\$146,777

### TRAFFIC COUNTS (per ACOG) 2014 - 2015

S. Western Avenue	13,229
S.W. 134th Street	20,000

For more information please contact:

**PHILLIP MAZAHERI, CCIM**  
 pmazaheri@priceedwards.com  
 405.239.1221

**PAUL RAVENCRAFT**  
 pravencraft@priceedwards.com  
 405.239.1220

**GEORGE WILLIAMS, CCIM**  
 gwilliams@priceedwards.com  
 405.239.1270

