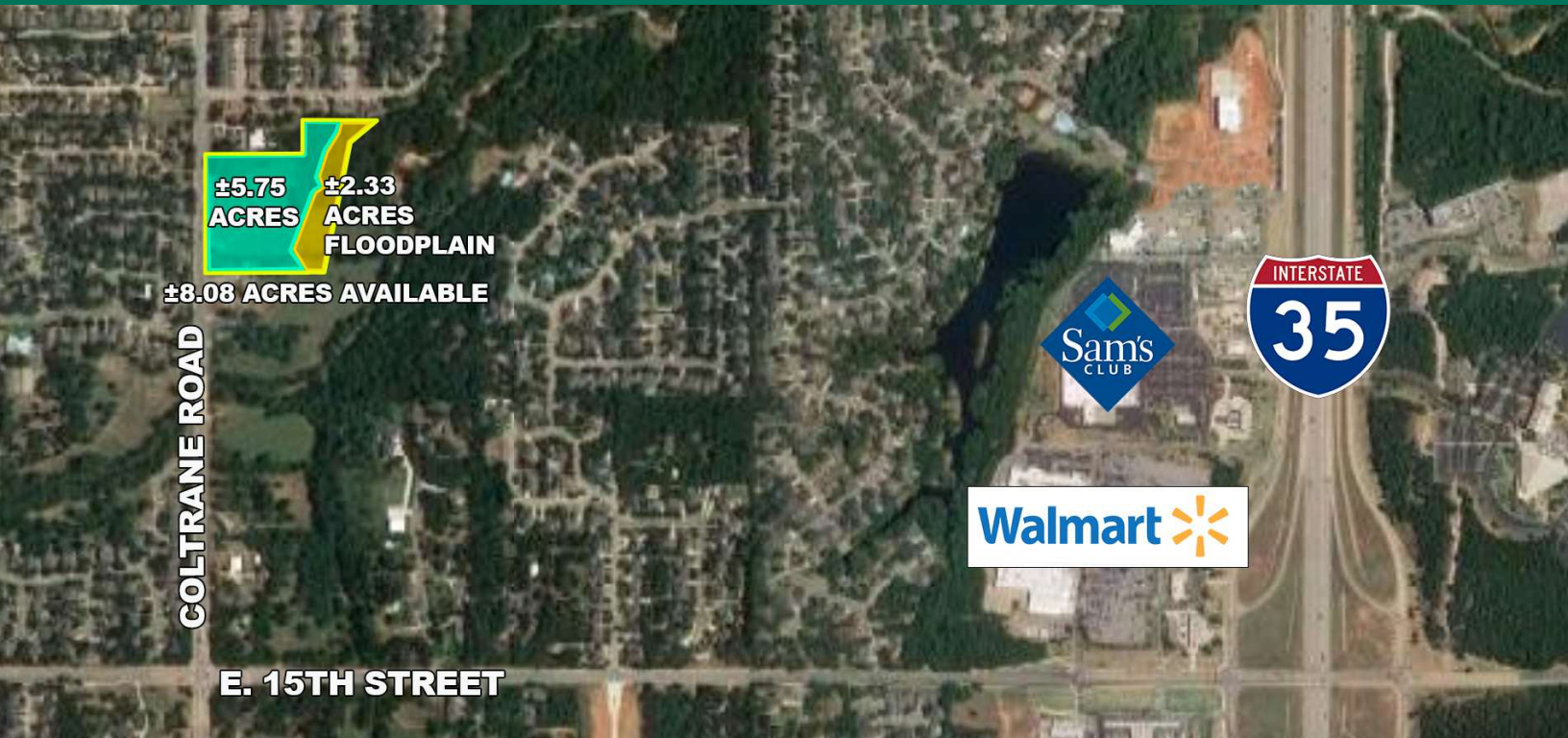


## DEVELOPMENT LAND FOR SALE COLTRANE, BETWEEN 15TH AND 2ND ST. EDMOND, OK 73034



### LOCATION DESCRIPTION

Located one mile west of I-35, on the east side of Coltrane Road just north 15th Street.

### PROPERTY HIGHLIGHTS

- Zoned PUD Office & Neighborhood Retail Use
- ± 497 feet of frontage on Coltrane
- R189257000 OK County Assessor Account Number
- ±8.08 area total
- Easily accessible from I-35
- Waterline (12 inch) on West side of Coltrane
- Sewer available East of Springcreek
- Electric, gas & telephone along Coltrane

### OFFERING SUMMARY

<b>Sale Price:</b>	\$999,750
<b>Lot Size:</b>	8.08 Acres

### TOM FIELDS

tfields@priceedwards.com  
O: 405.239.1205