



OFFERING SUMMARY

Sale Price:	\$700,000
Building Size:	10,000 SF
Available SF:	4,400 SF
Lot Size:	0.24 Acres
Price / SF:	\$70.00
Year Built:	1986
Zoning:	C-3

04172020

PROPERTY OVERVIEW

This two tenant strip center is home to Anytime Fitness. The remaining space is currently available. Store front and side parking are available.

Property has recently been remodeled and fresh facade.

Ideally located on the highly traveled Kickapoo Ave, this property offers excellent visibility and access with prominent pylon signage.

KARLEEN KRYWUCKI
405.843.7474
kkrywucki@pricedwards.com
pricedwards.com

EV ERNST
405.843.7474
ernst@pricedwards.com
pricedwards.com

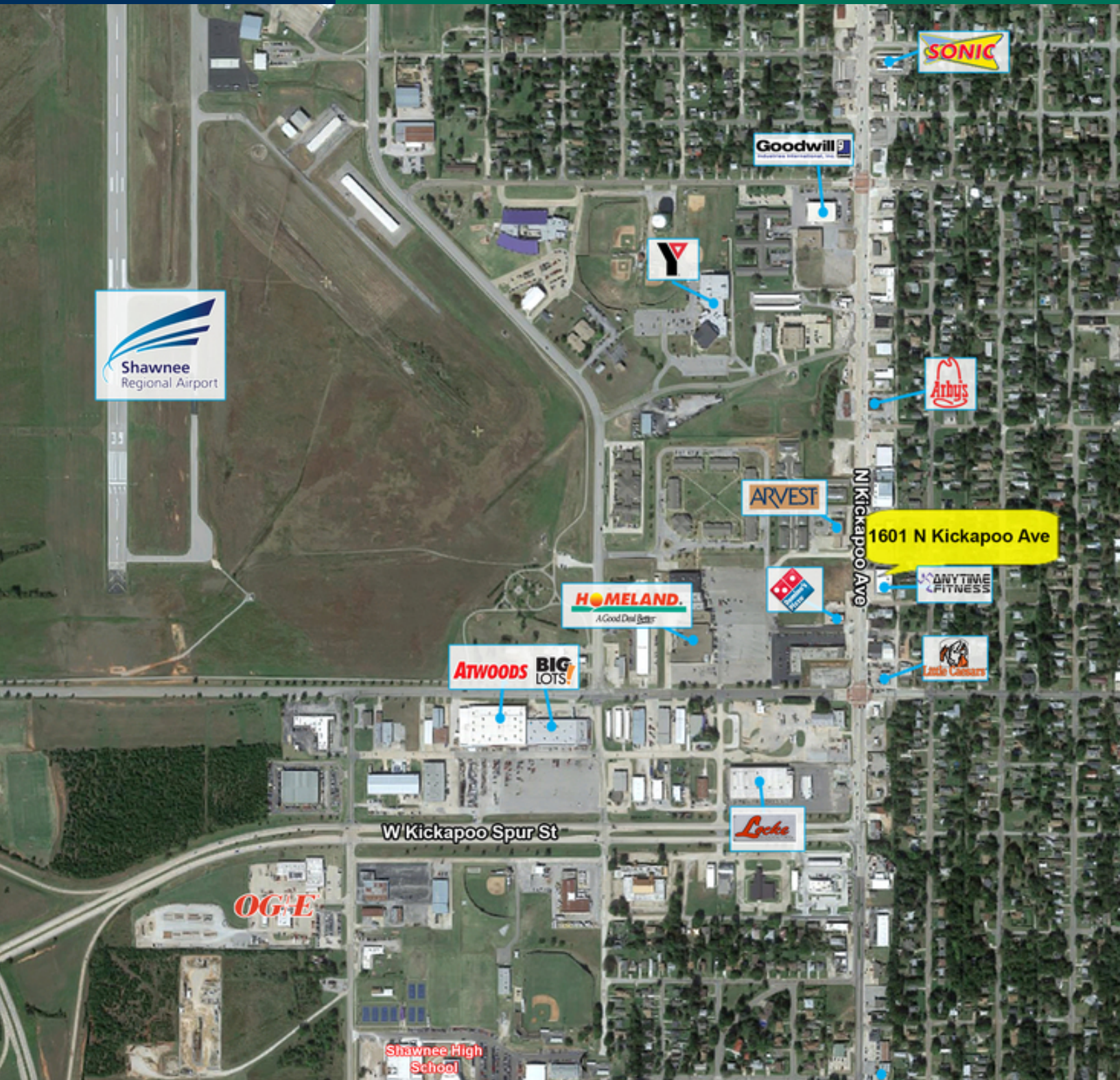


KARLEEN KRYWUCKI
405.843.7474
kkrywucki@pricedwards.com
pricedwards.com

EV ERNST
405.843.7474
ernst@pricedwards.com
pricedwards.com

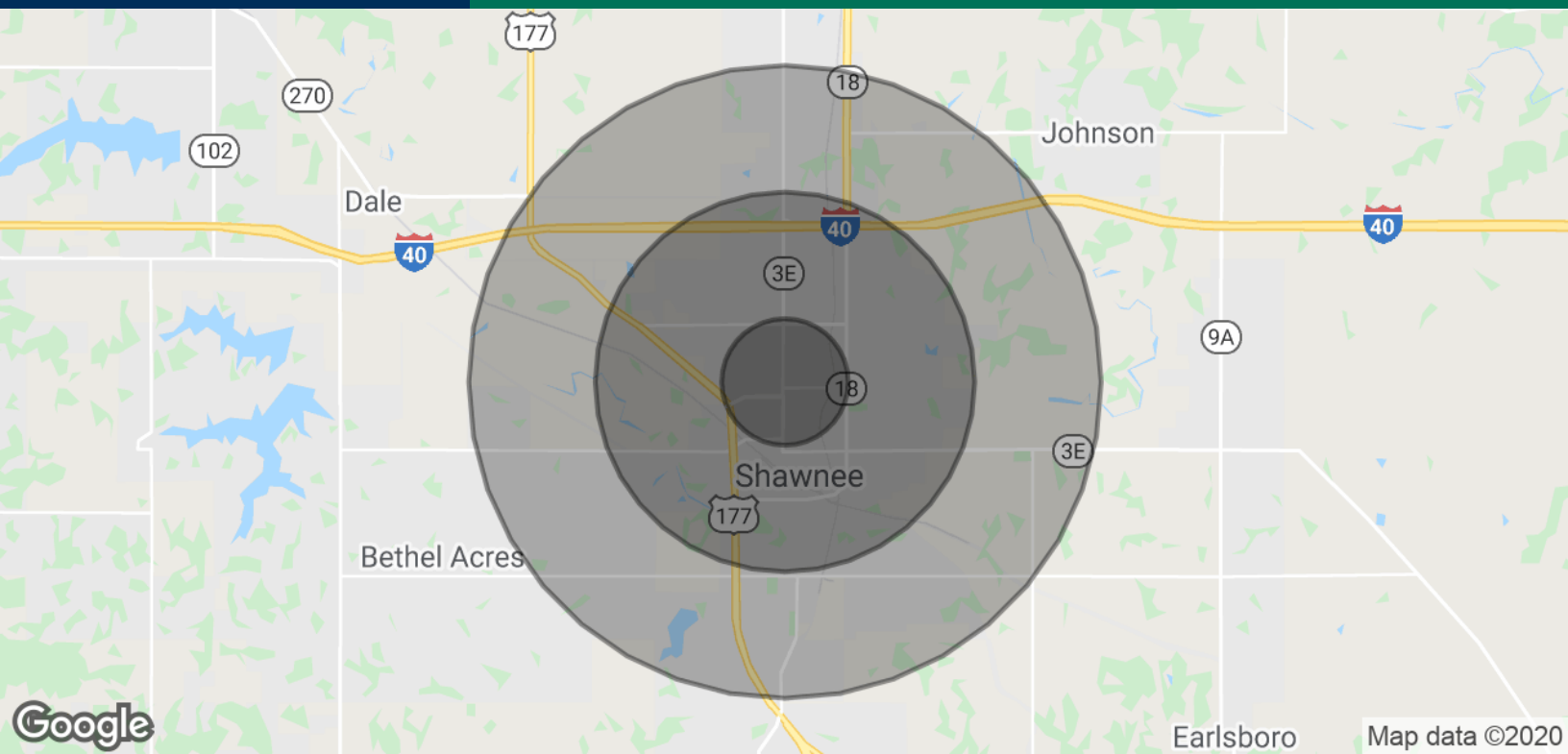
1601 N Kickapoo | For Sale

1601 N Kickapoo Ave, Shawnee, OK 74804



KARLEEN KRYWUCKI
405.843.7474
kkrywucki@pricedwards.com
pricedwards.com

EV ERNST
405.843.7474
ernst@pricedwards.com
pricedwards.com



POPULATION

	1 MILE	3 MILES	5 MILES
Total Population	8,006	30,037	39,208
Average age	32.8	34.2	35.4
Average age (Male)	29.8	32.2	33.3
Average age (Female)	35.2	35.5	36.7

HOUSEHOLDS & INCOME

	1 MILE	3 MILES	5 MILES
Total households	3,034	11,479	14,929
# of persons per HH	2.6	2.6	2.6
Average HH income	\$45,437	\$45,796	\$47,273
Average house value	\$78,210	\$82,268	\$95,789

* Demographic data derived from 2010 US Census

TRAFFIC COUNTS

N Kickapoo	north	14,600
N Kickapoo	south	11,400

KARLEEN KRYWUCKI
405.843.7474
kkrywucki@pricedwards.com
pricedwards.com

EV ERNST
405.843.7474
ernst@pricedwards.com
pricedwards.com