

OFFERING SUMMARY

16340 Muirfield Place, Edmond, OK 73013

Sale Price: \$1,595,000
Building Size: 6,390 SF
Price / SF: \$249.61
Year Built: 2021

\$2,200 annual HOA dues (subject to change annually)



1ST FLOOR:

6-8 private offices
Large conference room
2 storage areas
Break area
2 restrooms
Reception area

2ND FLOOR:

7 private offices
Open Cubicle Area
Large break area
2 restrooms

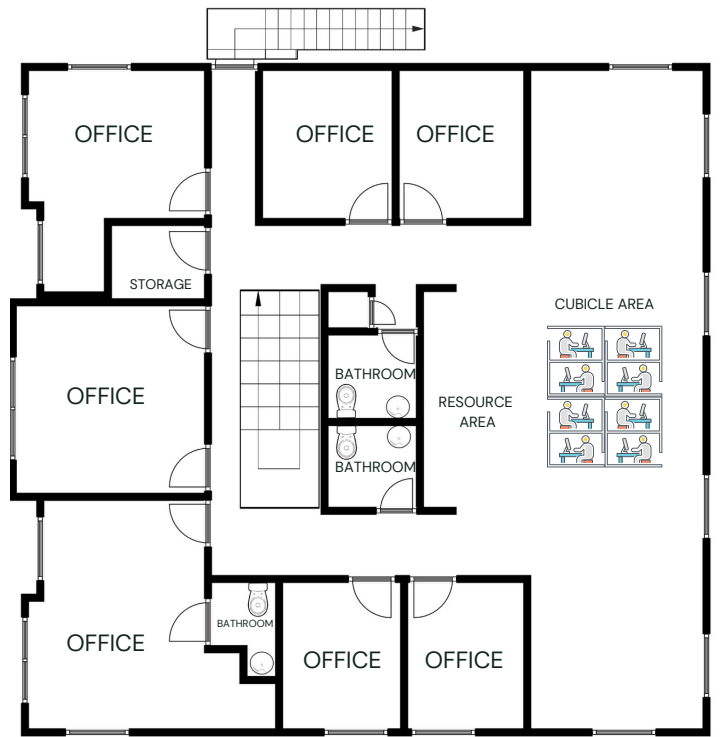
PROPERTY OVERVIEW

Brand new, 2 story office building with an abundance of interior glass offices and many high-end finishes. Near Quail Springs and Rose Creek Golf Course.





FIRST FLOOR



SECOND FLOOR