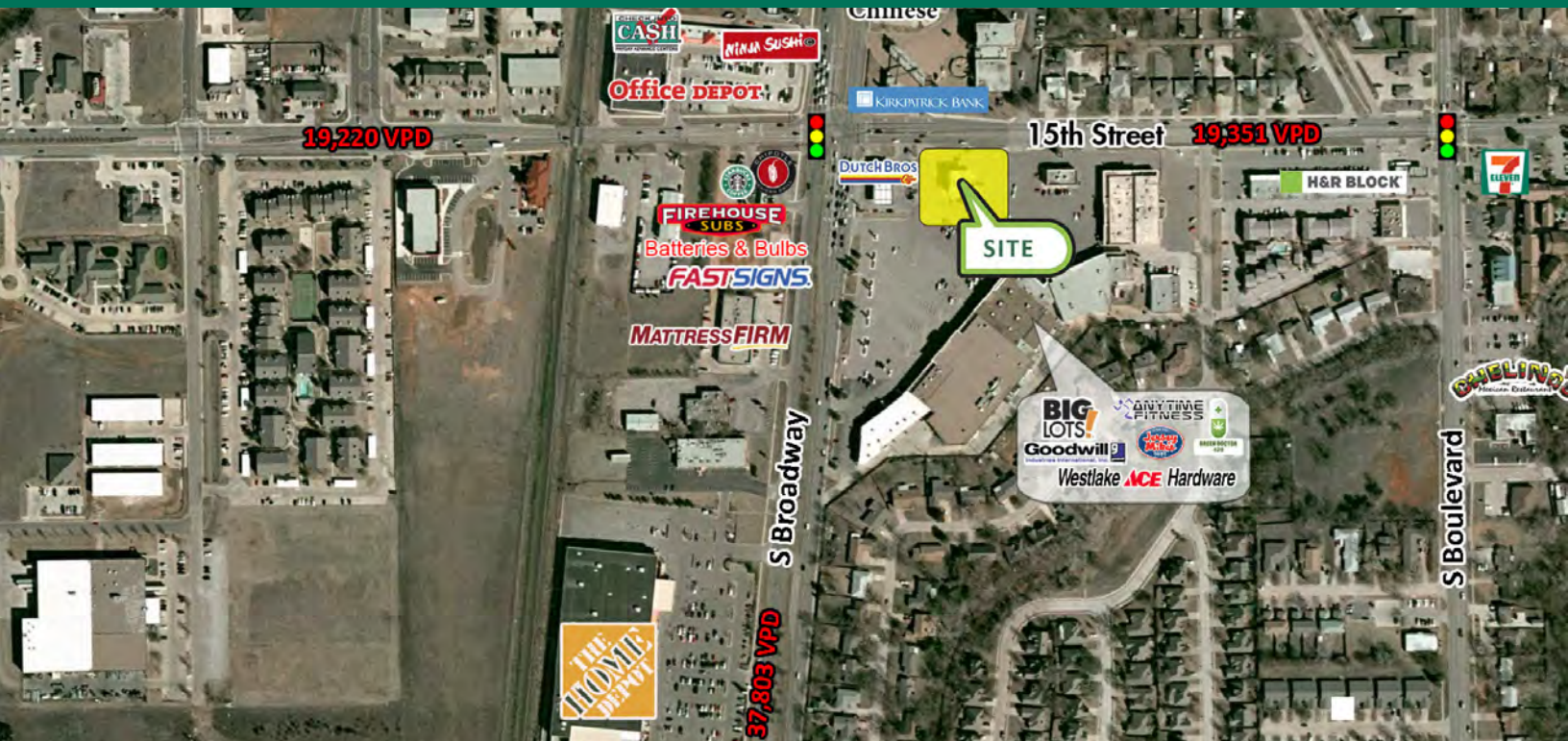


RETAIL PAD SITE FOR SALE

18 E 15TH ST, EDMOND, OK 73013



PROPERTY DESCRIPTION

Situated in the heart of Edmond, this property offers excellent visibility and easy access for customers. The site is surrounded by numerous national retailers, restaurants, and entertainment venues, making it an ideal location for businesses looking to tap into a large customer base.

This property boasts excellent demographics, with a population of over 91,000 residents within a 5-mile radius and an average household income of \$105,000. Additionally, the property benefits from high traffic counts, with over 30,000 vehicles passing by the location daily. 15th & S Broadway is the 2nd busiest intersection in Edmond.

Don't miss out on this rare opportunity to lease or own a prime retail pad site in Edmond.

OFFERING SUMMARY

Sale Price:	\$1,400,000
Lot Size:	0.75 Acres
Sq Ft:	32,670 SF

TRAFFIC COUNT

S Broadway	north/south	37,803
S 15th St	east	19,351
S 15th St	west	19,220

GIRMA MOANING

gmoaning@priceedwards.com
O: 405.239.1244 C: 405.664.0062

GEORGE WILLIAMS, CCIM

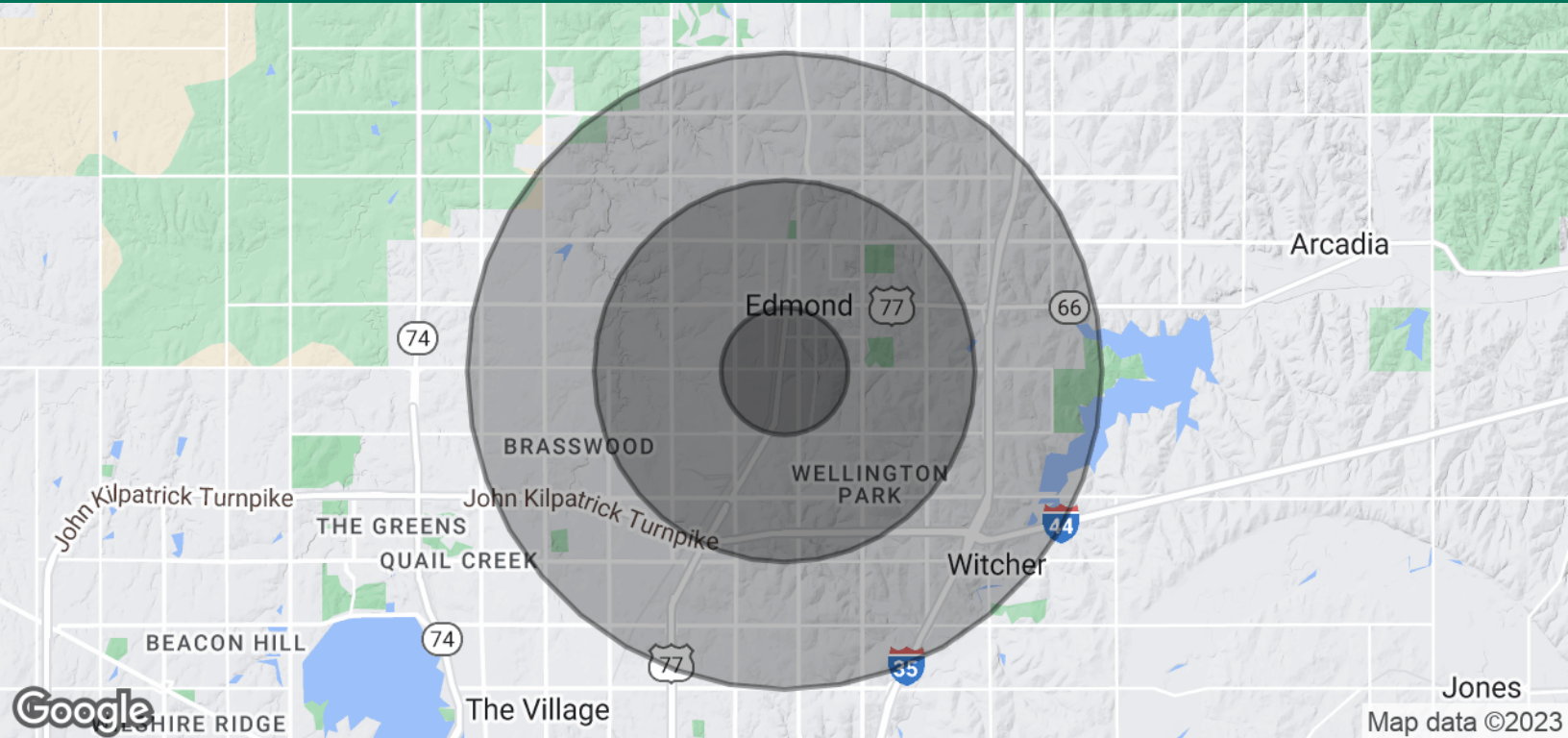
gwilliams@priceedwards.com
O: 405.239.1270 C: 405.657.7800

EV ERNST

eernst@priceedwards.com
O: 405.843.7474

RETAIL PAD SITE FOR SALE

18 E 15TH ST EDMOND, OK 73013



POPULATION	1 MILE	3 MILES	5 MILES
Total Population	9,311	76,846	147,806
Average Age	35.7	35.7	37.0
Average Age (Male)	33.8	33.3	34.8
Average Age (Female)	38.8	37.8	38.3
HOUSEHOLDS & INCOME	1 MILE	3 MILES	5 MILES
Total Households	4,072	31,705	62,033
# of Persons per HH	2.3	2.4	2.4
Average HH Income	\$67,378	\$86,870	\$96,769
Average House Value	\$155,903	\$197,478	\$219,921

* Demographic data derived from 2020 ACS - US Census

03272023

GIRMA MOANING

gmoaning@priceedwards.com
O: 405.239.1244 C: 405.664.0062

GEORGE WILLIAMS, CCIM

gwilliams@priceedwards.com
O: 405.239.1270 C: 405.657.7800

EV ERNST

eernst@priceedwards.com
O: 405.843.7474