

18.68 ACRES ON NE HARD CORNER

E Danforth Rd & N Coltrane Rd, Edmond, OK 73034



LAND SPACE AVAILABLE

Sale Price:	\$5,190,000
Lot Size:	18.68 Acres
Sq Ft:	813,700.8 Sq Ft +/-
Zoning:	E-2/D1
Sub Market:	Edmond
	10272020

COMMENTS

911' of Frontage Along E Danforth Rd and 893' of Frontage Along N Coltrane Rd

Prime Commercial Land-Development ready

All Utilities to Site

Located in heart of Edmond's most rapidly growing neighborhoods

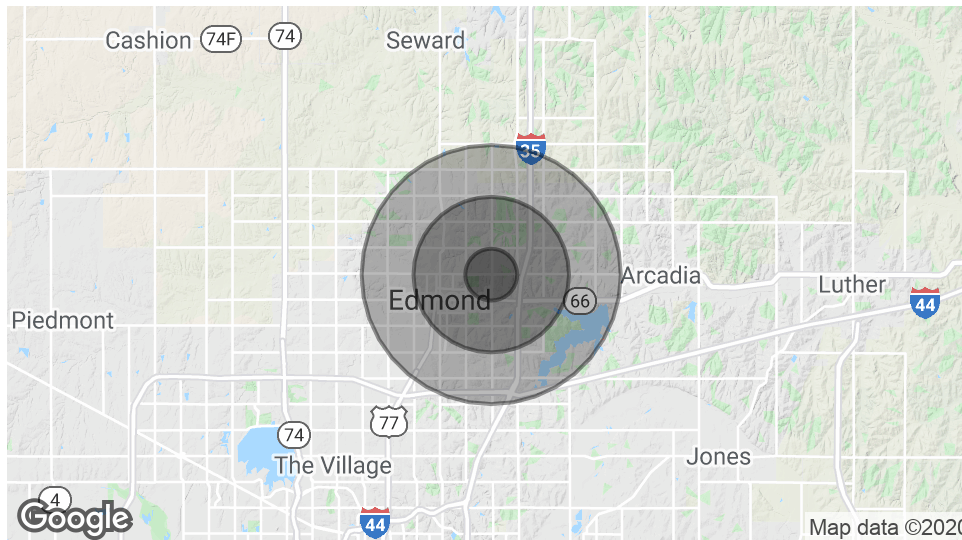
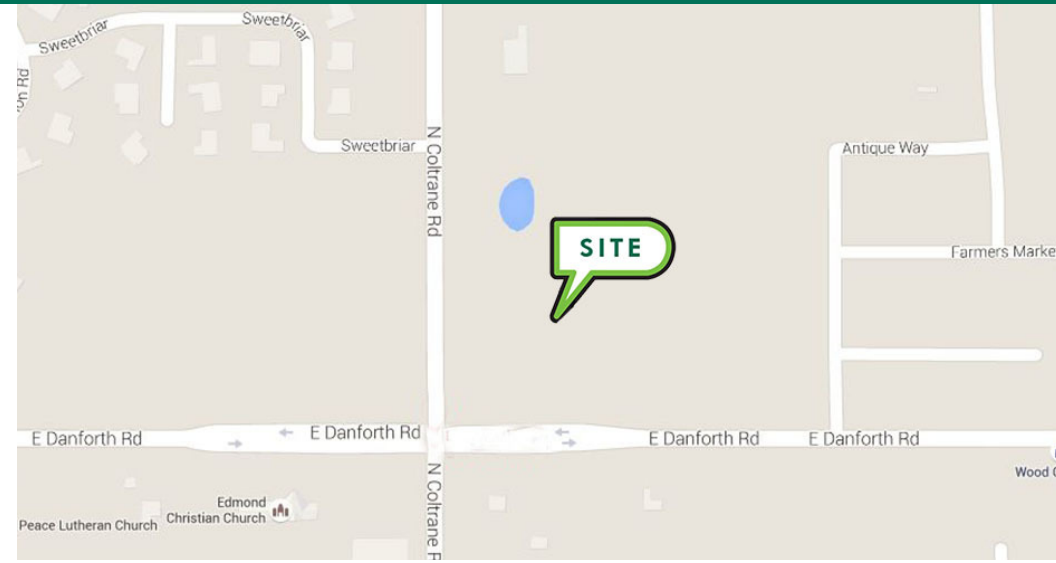
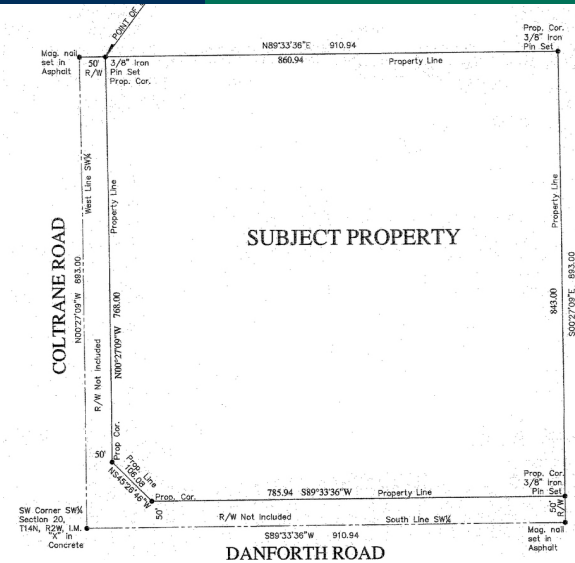
Strong Demographics

CORDELL C. BROWN, CCIM, CIPS
405.239.1222
cbrown@pricedwards.com
pricedwards.com

GEORGE WILLIAMS, CCIM
405.239.1270
gwilliams@pricedwards.com
pricedwards.com

18.68 ACRES ON NE HARD CORNER

E Danforth Rd & N Coltrane Rd, Edmond, OK 73034



Total Population	88,625
Population Density	88,625
Total Households	33,433
# of Persons Per HH	2.7
Average HH Income	\$90,603
Average House Value	\$268,901

TRAFFIC COUNTS (PER ACOG)

N Coltrane Rd	North South	7,034 9,637
E Danforth Rd	East West	9,692 16,238

CORDELL C. BROWN, CCIM, CIPS
405.239.1222
cbrown@pricedwards.com
pricedwards.com

GEORGE WILLIAMS, CCIM
405.239.1270
gwilliams@pricedwards.com
pricedwards.com