

3017 N MLK - Office Building

3017 N Martin Luther King, Oklahoma City, OK 73111



OFFERING SUMMARY

Sale Price:	\$600,000
Building Size:	4,160 SF
Available SF:	4,160 SF
Lot Size:	0.55 Acres
Price / SF:	\$144.23
Year Built:	1978
Market:	Oklahoma City

PROPERTY OVERVIEW

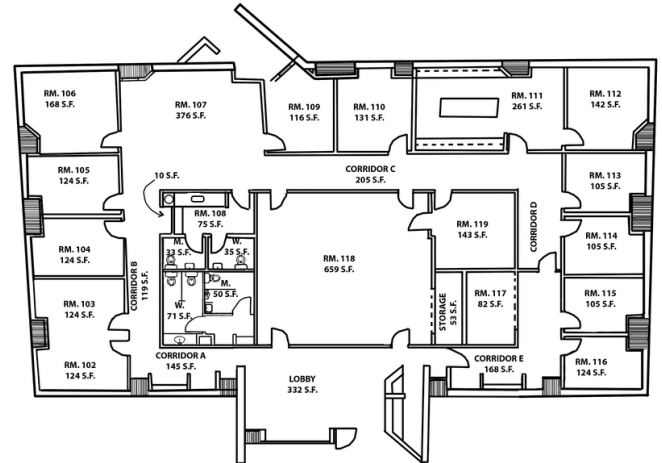
The subject property is a well constructed office building ideally suited for owner/user. The 4,160 square foot building is situated on approximately 0.55 acres at the corner of NE 30th Street and N Martin Luther King Ave.

PROPERTY HIGHLIGHTS

- 10 Min from Downtown Oklahoma City
- 26 Parking Spaces
- Frontage on NE 30th Street and N Martin Luther King Ave
- Easy access to I-35 and I-235
- Ideal for owner/user
- Hard Corner

GEORGE WILLIAMS, CCIM
405.239.1270
gwilliams@pricedwards.com
pricedwards.com

PAUL RAVENCRAFT
405.239.1220
pravencraft@pricedwards.com
pricedwards.com

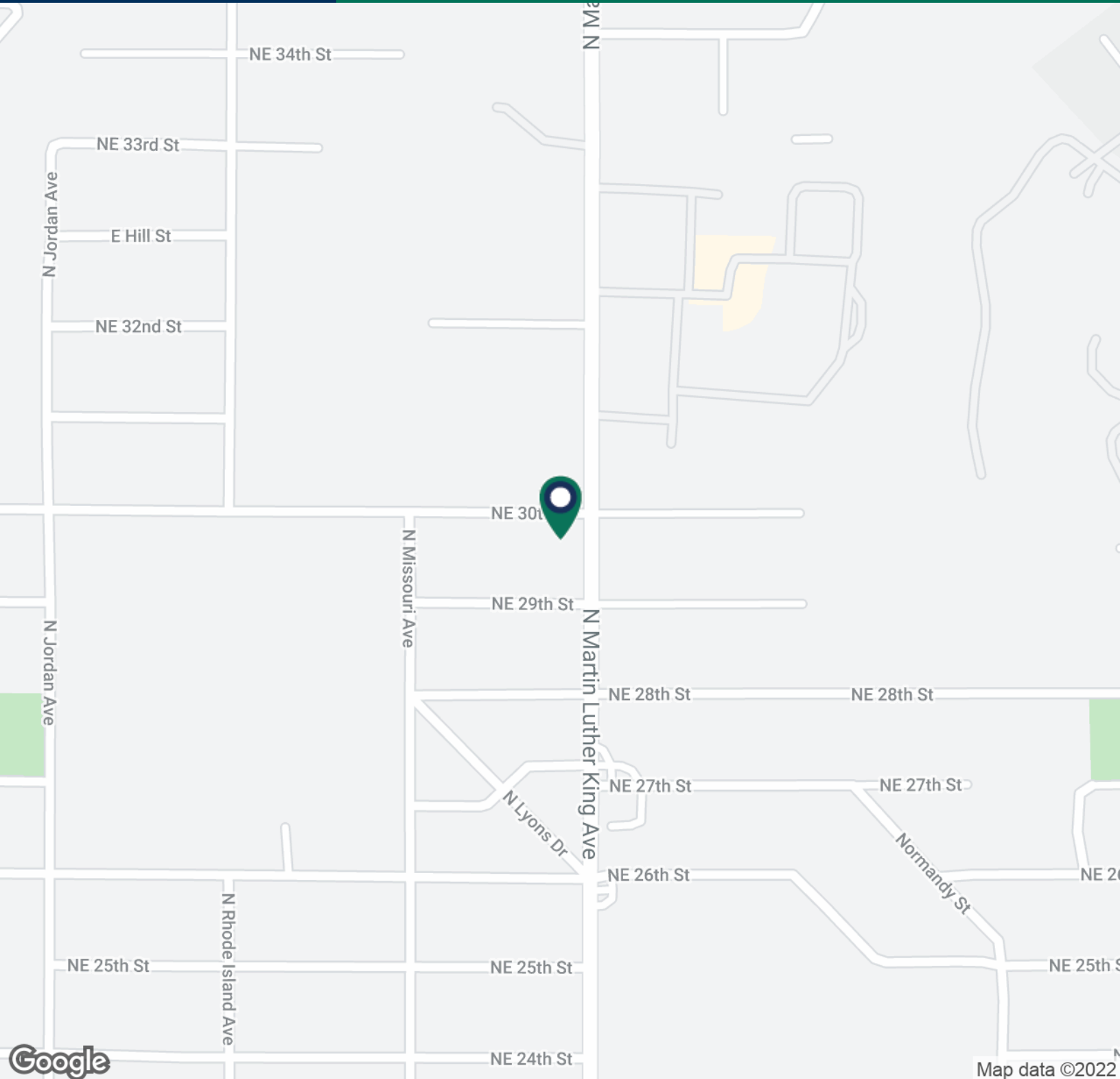


GEORGE WILLIAMS, CCIM
405.239.1270
gwilliams@pricedwards.com
pricedwards.com

PAUL RAVENCRAFT
405.239.1220
pravencraft@pricedwards.com
pricedwards.com

3017 N MLK - Office Building

3017 N Martin Luther King, Oklahoma City, OK 73111

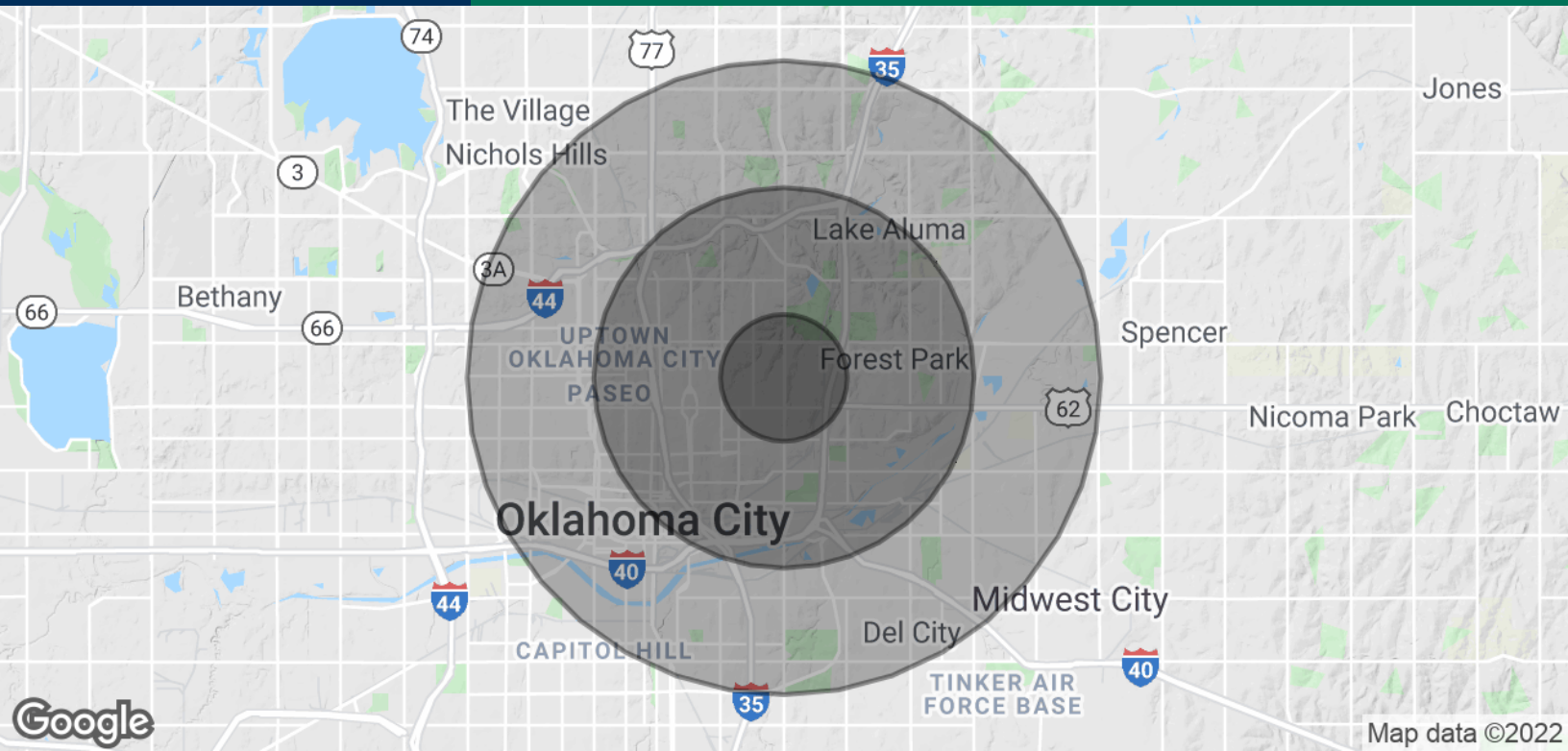


GEORGE WILLIAMS, CCIM
405.239.1270
gwilliams@pricedwards.com
pricedwards.com

PAUL RAVENCRAFT
405.239.1220
pravencraft@pricedwards.com
pricedwards.com

3017 N MLK - Office Building

3017 N Martin Luther King, Oklahoma City, OK 73111



POPULATION

	1 MILE	3 MILES	5 MILES
Total Population	5,594	34,620	113,631
Average Age	43.3	39.0	35.7
Average Age (Male)	40.2	38.0	34.9
Average Age (Female)	45.0	39.9	36.1

HOUSEHOLDS & INCOME

	1 MILE	3 MILES	5 MILES
Total Households	2,442	14,834	46,627
# of Persons per HH	2.3	2.3	2.4
Average HH Income	\$30,526	\$41,818	\$48,848
Average House Value	\$72,696	\$118,567	\$139,628

* Demographic data derived from 2010 US Census

GEORGE WILLIAMS, CCIM
405.239.1270
gwilliams@pricedwards.com
pricedwards.com

PAUL RAVENCRAFT
405.239.1220
pravencraft@pricedwards.com
pricedwards.com