



OFFERING SUMMARY

Sale Price: \$2,600,000

Lot Size: 38 Acres

Zoning: I-2 Moderate Industrial

PROPERTY OVERVIEW

Great tract of land with rail opportunity at SW 29th and Portland. the site has frontage on SW 29th Street, S. Portland and Hwy 152.

PROPERTY HIGHLIGHTS

- Southern boundary runs along railway & Highway 152
- Potential for 2 railway switches
- 5 minutes from Will Rogers Airport
- 1 Mile from I-44
- All Utilities Adjacent or on-site

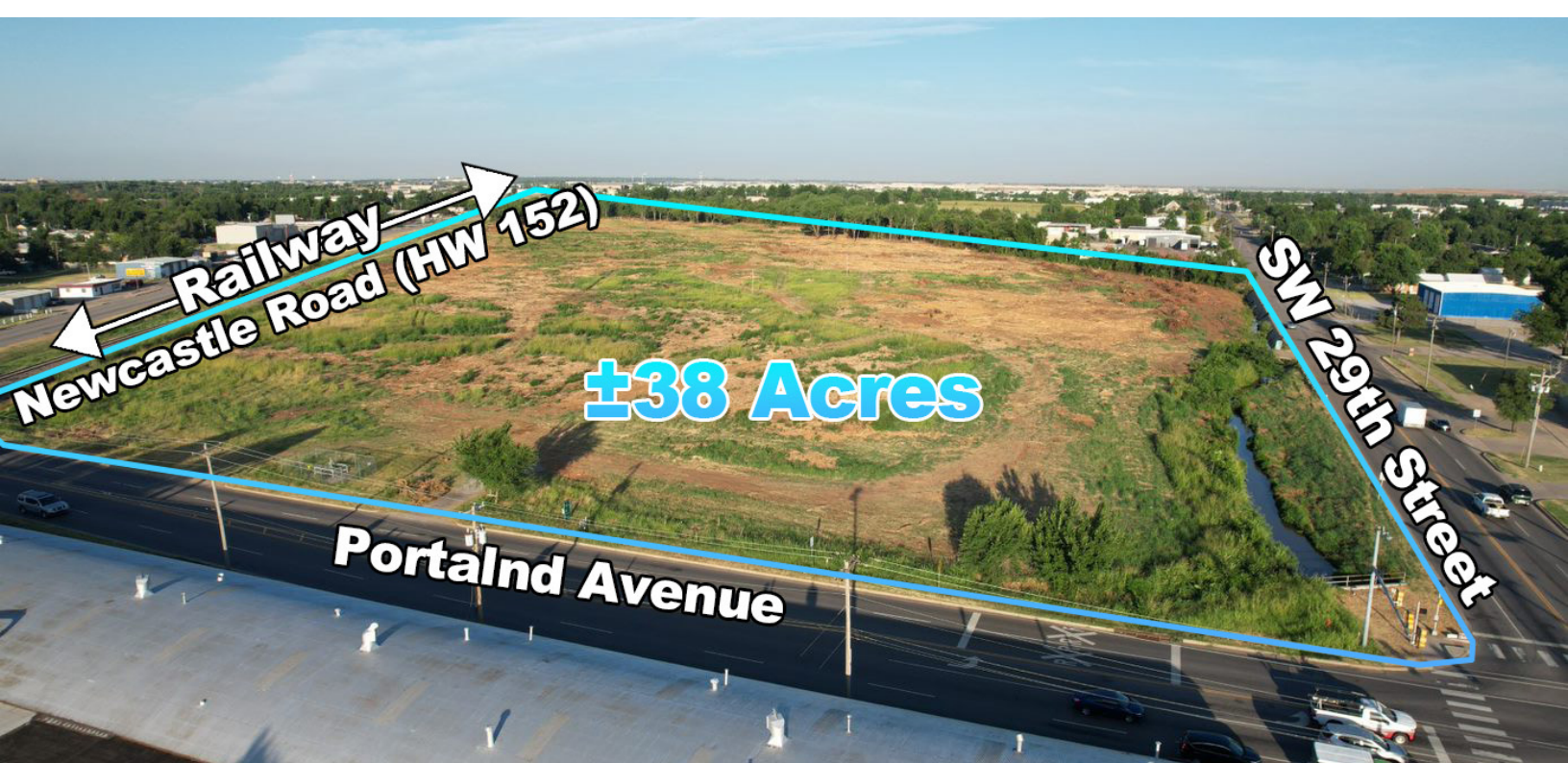
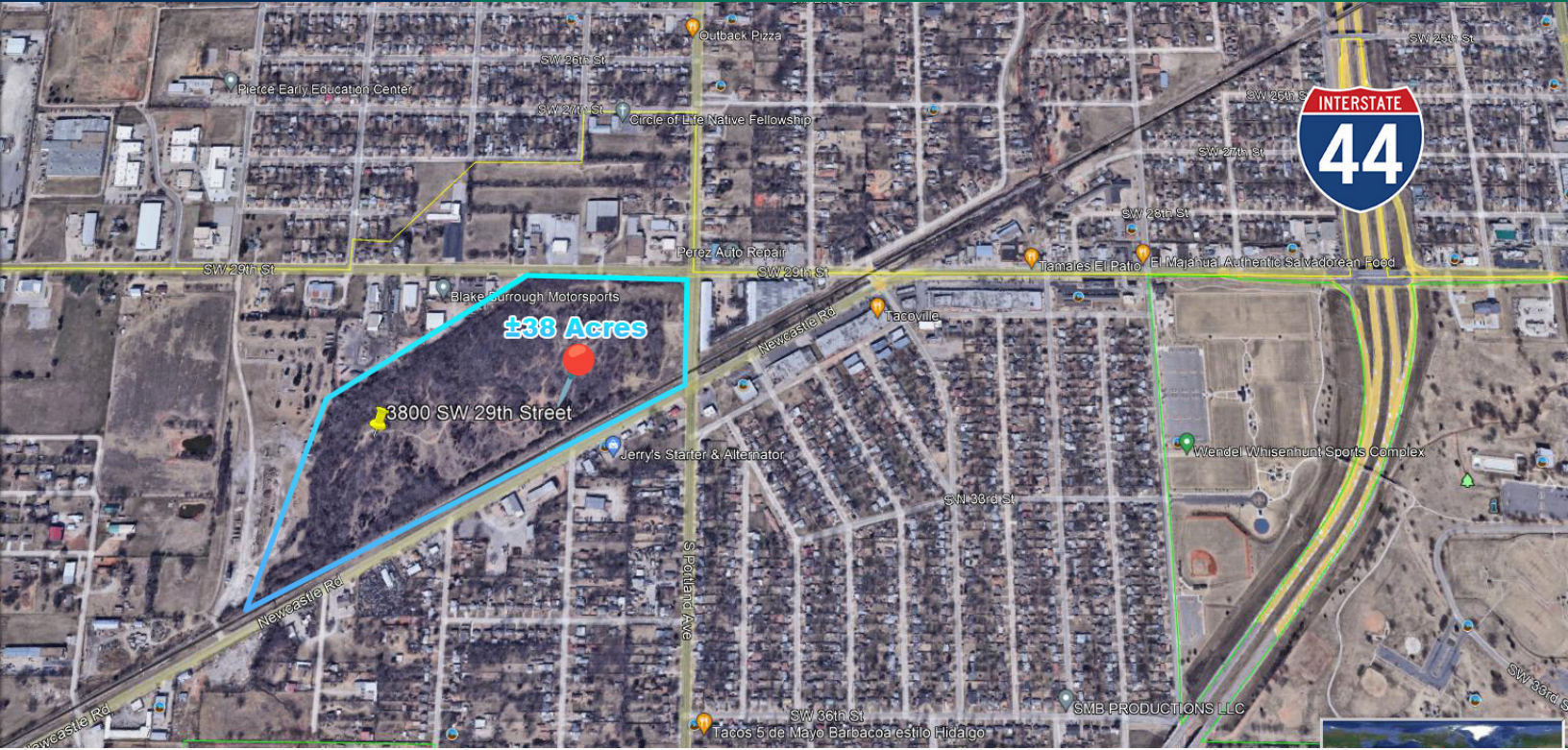
DANNY RIVERA
405.408.5449
drivera@priceedwards.com
priceedwards.com

ANDREW HOLDER
580.430.5124
aholder@priceedwards.com
priceedwards.com

CORDELL C. BROWN, CCIM, CIPS
405.239.1222
cbrown@priceedwards.com
priceedwards.com

±38 Acres For Sale

3800 SW 29th Street, Oklahoma City, OK 73119



DANNY RIVERA
405.408.5449
drivera@pricedwards.com
pricedwards.com

ANDREW HOLDER
580.430.5124
aholder@pricedwards.com
pricedwards.com

CORDELL C. BROWN, CCIM, CIPS
405.239.1222
cbrown@pricedwards.com
pricedwards.com