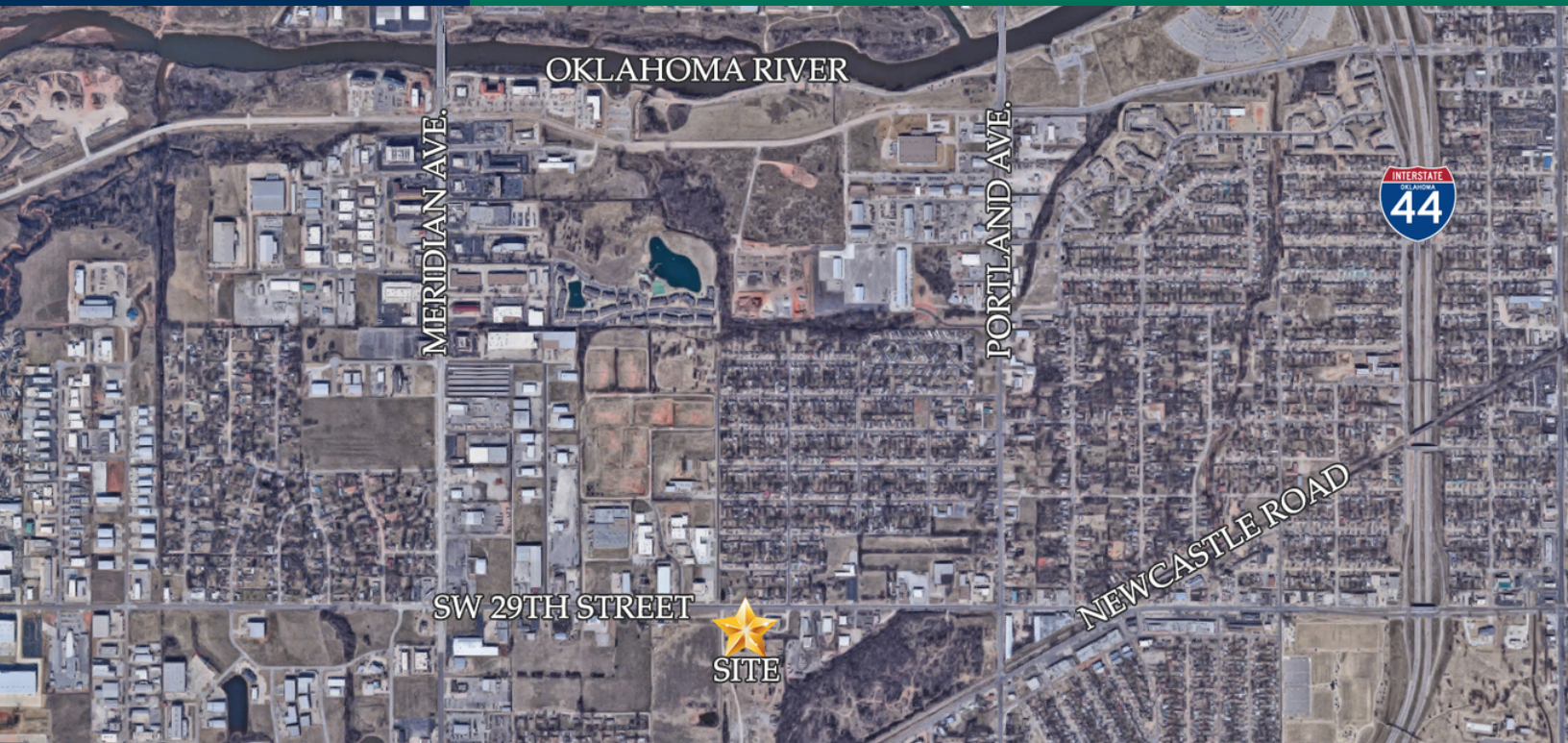


# Industrial Land For Sale

4024 SW 29th St., Oklahoma City, OK 73119



## OFFERING SUMMARY

Sale Price:	\$215,000
Lot Size:	1.23 Acres
Price / Acre:	\$174,797

## LOCATION OVERVIEW

Easily accessible from I-44, I-40, Airport Road and Newcastle Road. Located off SW 29th Street between Portland and Meridian Ave.

## PROPERTY HIGHLIGHTS

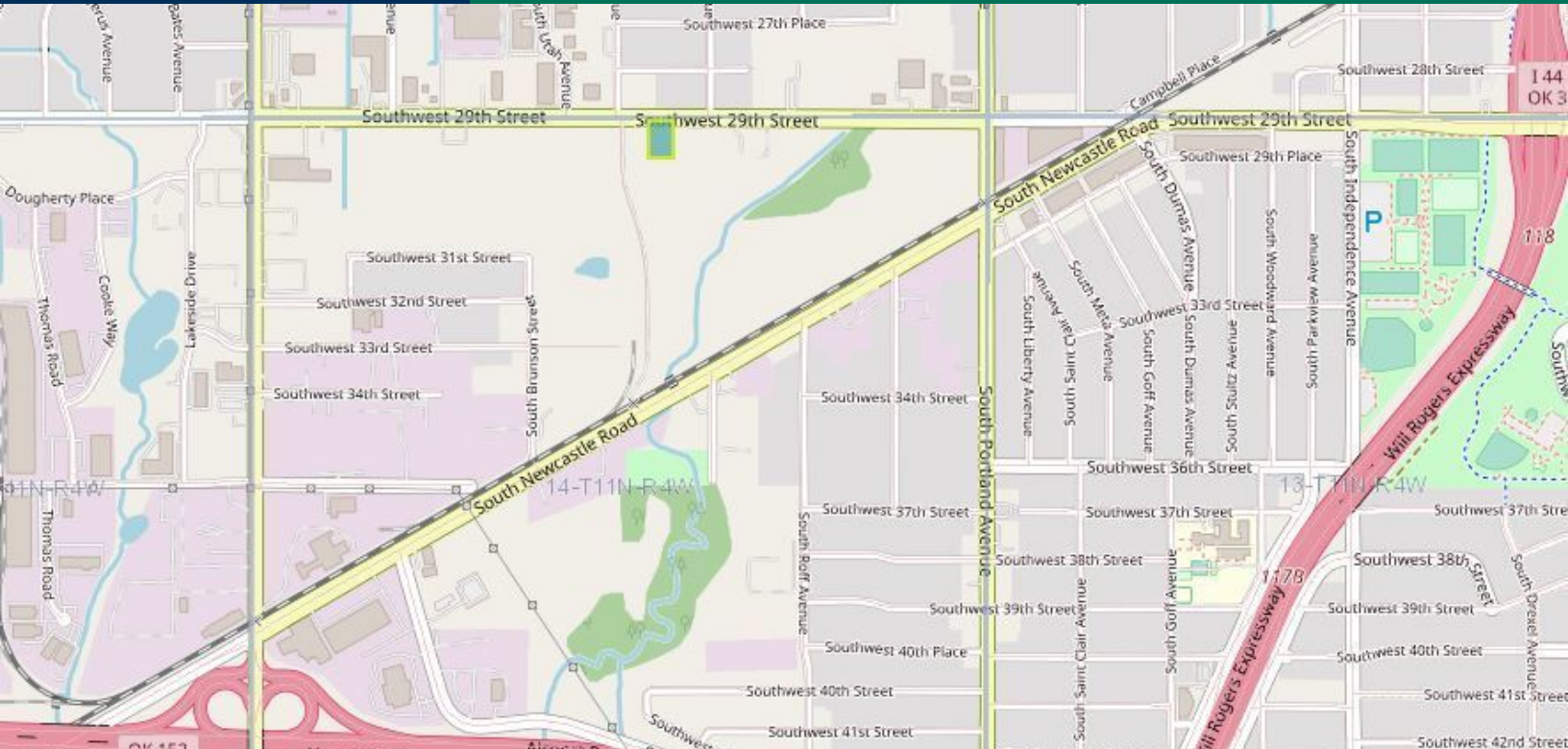
- \$215,000
- 1.23 Acres
- Zoned I-2
- Septic and all other utilities on site
- Near Will Rogers with SW 29th frontage

**CHRIS ROBERTS**  
405.239.1236  
croberts@priceedwards.com  
priceedwards.com



# Industrial Land For Sale

4024 SW 29th St., Oklahoma City, OK 73119



**CHRIS ROBERTS**  
405.239.1236  
croberts@priceedwards.com  
priceedwards.com